

DISTRICT I
P.O. Box 1880, Hobbs, NM 88241-1880

State of New Mexico
Energy, Minerals and Natural Resources Department

Form C-102
Revised February 10, 1994
Submit to Appropriate District Office
State Lease - 4 Copies
Fee Lease - 3 Copies

DISTRICT II
P.O. Drawer DD, Artesia, NM 88211-0710

DISTRICT III
1000 Rio Brazos Rd., Aztec, NM 87410

DISTRICT IV
P.O. BOX 2088, SANTA FE, N.M. 87504-2088

OIL CONSERVATION DIVISION

P.O. Box 2088
Santa Fe, New Mexico 87504-2088

☐ AMENDED REPORT

WELL LOCATION AND ACREAGE DEDICATION PLAT

API Number 30-025 - 35/21	Pool Code 23000	Pool Name Eunice Monument Grayburg San Andres
Property Code 020311	Property Name MONUMENT	Well Number 4
OGRID No. 148967	Operator Name SAGA PETROLEUM LLC	Elevation 3729

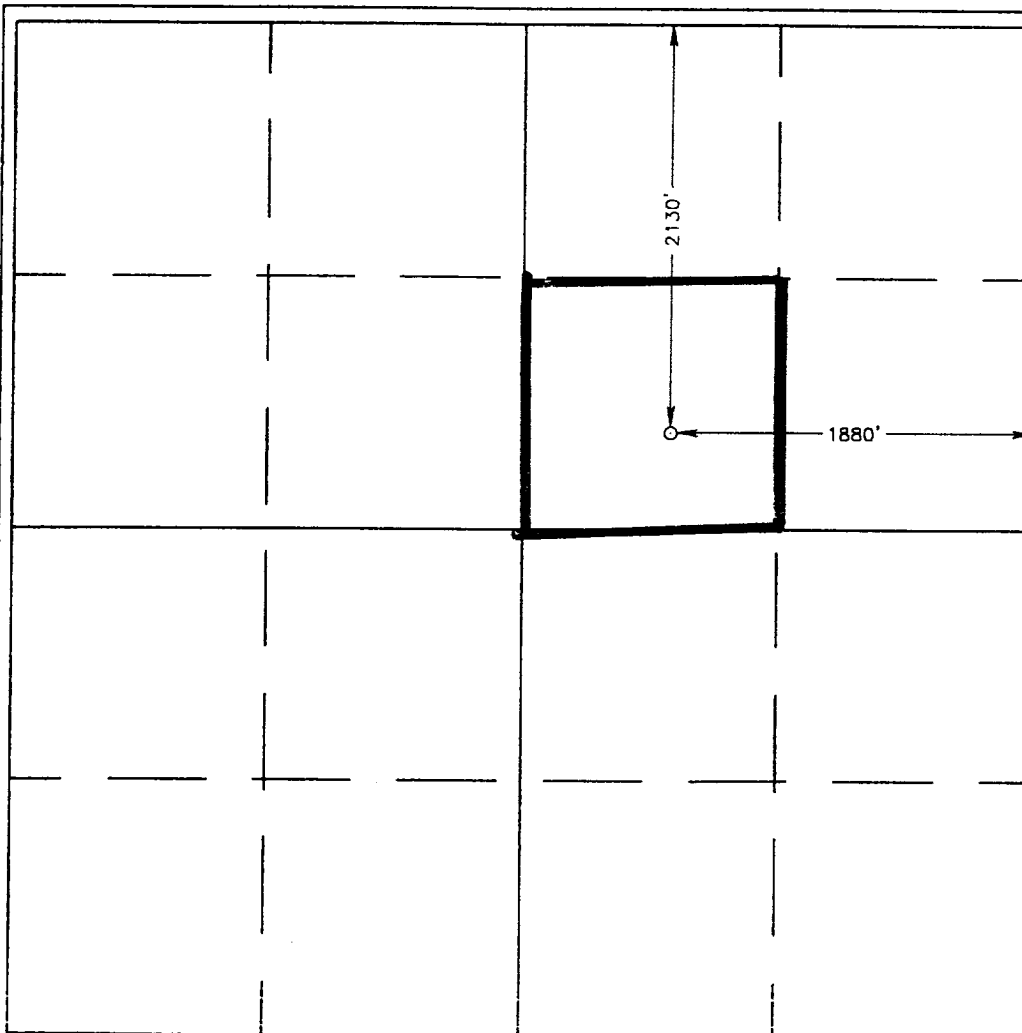
Surface Location

UL or lot No. G	Section 12	Township 19 S	Range 36 E	Lot Idn	Feet from the 2130	North/South line NORTH	Feet from the 1880	East/West line EAST	County LEA
--------------------	---------------	------------------	---------------	---------	-----------------------	---------------------------	-----------------------	------------------------	---------------

Bottom Hole Location If Different From Surface

UL or lot No.	Section	Township	Range	Lot Idn	Feet from the	North/South line	Feet from the	East/West line	County
Dedicated Acres 40	Joint or Infill	Consolidation Code	Order No.						

NO ALLOWABLE WILL BE ASSIGNED TO THIS COMPLETION UNTIL ALL INTERESTS HAVE BEEN CONSOLIDATED
OR A NON-STANDARD UNIT HAS BEEN APPROVED BY THE DIVISION



OPERATOR CERTIFICATION

I hereby certify the the information
contained herein is true and complete to the
best of my knowledge and belief.

Bonnie Husband
Signature

Bonnie Husband
Printed Name
Production Analyst

Title
8-8-2000
Date

SURVEYOR CERTIFICATION

I hereby certify that the well location shown
on this plat was plotted from field notes of
actual surveys made by me or under my
supervision, and that the same is true and
correct to the best of my belief.

AUGUST 1, 2000

Date Surveyed
Signature of Surveyor
Professional Surveyor
NEW MEXICO
8/02/00
20-11-0849

Certificate No. RONALD J. EIDSON 3239
GARY EIDSON 12641

See Amended Plat

