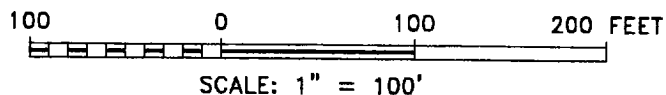
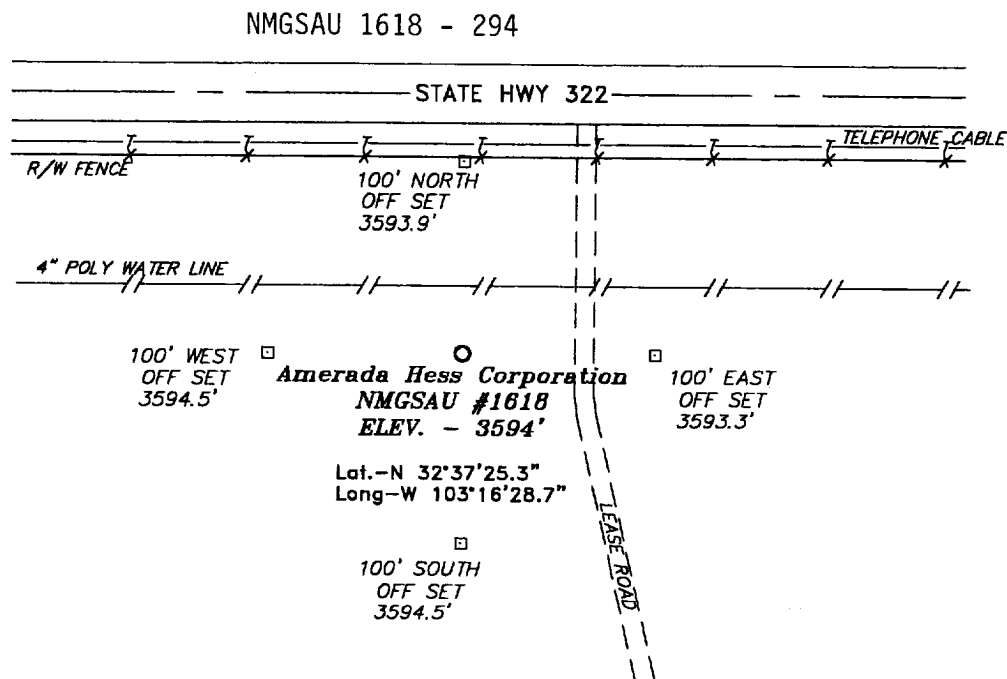


**SECTION 32, TOWNSHIP 19 SOUTH, RANGE 37 EAST, N.M.P.M.,
LEA COUNTY, NEW MEXICO.**



Directions to Location:

FROM THE JUNCTION OF STATE HWY 8 AND STATE HWY 322, GO WEST APPROX. 0.5 MILE TO A POINT WHICH LIES 150' NORTH OF THE PROPOSED WELL LOCATION.

Amerada Hess Corporation

REF: NMGSAU #1618 / Well Pad Topo

THE NMGSAU No. 1618 LOCATED 112' FROM THE NORTH LINE AND 2622' FROM THE WEST LINE OF SECTION 32, TOWNSHIP 19 SOUTH, RANGE 37 EAST, N.M.P.M., LEA COUNTY, NEW MEXICO.

BASIN SURVEYS P.O. BOX 1786 - HOBBS, NEW MEXICO

W.O. Number: 0423 Drawn By: **K. GOAD**

Date: 07-27-2000 Disk: KJG #122 - 0422A.DWG

Survey Date: 07-27-2000 Sheet 1 of 1 Sheets

