

DISTRICT I
1825 N. French Dr., Hobbs, NM 88240
DISTRICT II
811 South First, Artesia, NM 88210

DISTRICT III
1000 Rio Brazos Rd., Aztec, NM 87410

DISTRICT IV
2040 South Pacheco, Santa Fe, NM 87505

State of New Mexico
Energy, Minerals and Natural Resources Department

Form C-102
Revised March 17, 1999

Submit to Appropriate District Office
State Lease - 4 Copies
Fee Lease - 3 Copies

OIL CONSERVATION DIVISION

2040 South Pacheco
Santa Fe, New Mexico 87504-2088

☐ AMENDED REPORT

WELL LOCATION AND ACREAGE DEDICATION PLAT

API Number 30-025-35177	Pool Code 23000	Pool Name EUNICE-MONUMENT/GRAYBURG-SAN ANDRES
Property Code 000135	Property Name NMGSAU	Well Number 297
GRID No. 000495	Operator Name AMERADA HESS CORPORATION	Elevation 3599'

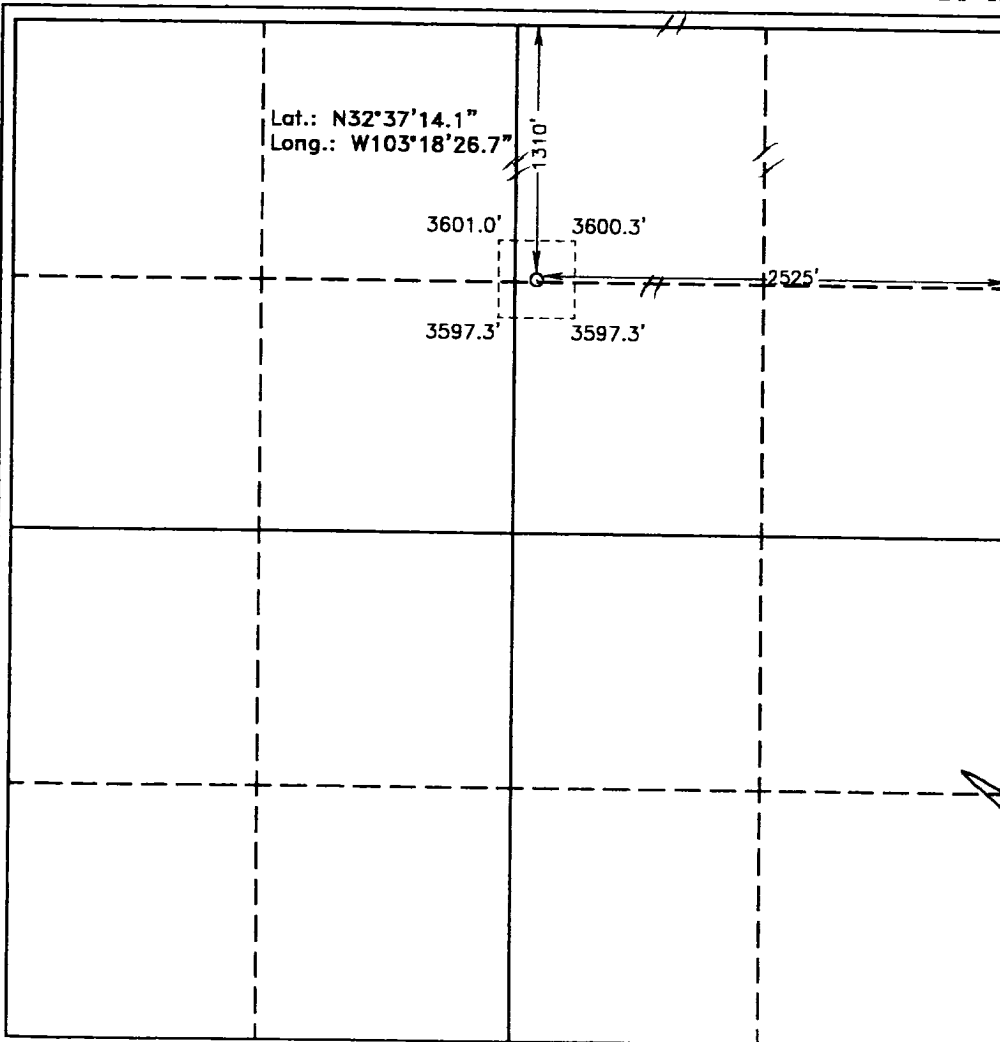
Surface Location

UL or lot No. B	Section 36	Township 19 S	Range 36 E	Lot Idn	Feet from the 1310	North/South line NORTH	Feet from the 2525	East/West line EAST	County LEA
---------------------------	----------------------	-------------------------	----------------------	---------	------------------------------	----------------------------------	------------------------------	-------------------------------	----------------------

Bottom Hole Location If Different From Surface

UL or lot No.	Section	Township	Range	Lot Idn	Feet from the	North/South line	Feet from the	East/West line	County
Dedicated Acres 40	Joint or Infill I	Consolidation Code U	Order No. UNITIZATION ORDER #R-9494/WF ORDER #R-9596						

NO ALLOWABLE WILL BE ASSIGNED TO THIS COMPLETION UNTIL ALL INTERESTS HAVE BEEN CONSOLIDATED
OR A NON-STANDARD UNIT HAS BEEN APPROVED BY THE DIVISION



OPERATOR CERTIFICATION

I hereby certify the the information
contained herein is true and complete to the
best of my knowledge and belief.

Ann Williams
Signature

ANN WILLIAMS
Printed Name

SR. STAFF ASSOCIATE
Title

09/13/00
Date

SURVEYOR CERTIFICATION

I hereby certify that the well location shown
on this plat was plotted from field notes of
actual surveys made by me or under my
supervision, and that the same is true and
correct to the best of my belief.

July 27, 2000

Date Surveyed

Gary L. Jones
Signature

GARY L. JONES
Professional Surveyor

NEW MEXICO

7977
W.O. No

Certificate No. **Gary L. Jones** **7977**

PROFESSIONAL LAND SURVEYOR