

District I  
1625 N. French Dr., Hobbs, NM 88240  
District II  
811 South First, Artesia, NM 88210  
District III  
1000 Rio Brazos Road, Aztec, NM 87410  
District IV  
2040 South Pacheco, Santa Fe, NM 87505

State of New Mexico  
Energy Minerals and Natural Resources

Oil Conservation Division  
2040 South Pacheco  
Santa Fe, NM 87505

Form C-101  
Revised March 17, 1999

Submit to appropriate District Office  
State Lease - 6 Copies  
Fee Lease - 5 Copies

☐ AMENDED REPORT

APPLICATION FOR PERMIT TO DRILL, RE-ENTER, DEEPEN, PLUGBACK, OR ADD A ZONE

<sup>1</sup> Operator Name and Address Matador Operating Company 8340 Meadow Rd., #158 Dallas, TX 75231		<sup>2</sup> OGRID Number 014245
		<sup>3</sup> API Number 30-025-35204
<sup>3</sup> Property Code 26794	<sup>3</sup> Property Name Cooper "3"	<sup>6</sup> Well No. 6

<sup>7</sup> Surface Location

UL or lot no.	Section	Township	Range	Lot Idn	Feet from the	North/South line	Feet from the	East/West line	County
B	3	20S	37E	2	458'	North	1704'	East	Lea

<sup>8</sup> Proposed Bottom Hole Location If Different From Surface

UL or lot no.	Section	Township	Range	Lot Idn	Feet from the	North/South line	Feet from the	East/West line	County
<sup>9</sup> Proposed Pool 1 Wildcat						<sup>10</sup> Proposed Pool 2			
<sup>11</sup> Work Type Code N		<sup>12</sup> Well Type Code O		<sup>13</sup> Cable/Rotary R		<sup>14</sup> Lease Type Code P		<sup>15</sup> Ground Level Elevation 3561'	
<sup>16</sup> Multiple No		<sup>17</sup> Proposed Depth 10300'		<sup>18</sup> Formation Ellenburger		<sup>19</sup> Contractor Patterson Drilling		<sup>20</sup> Spud Date 10-28-00	

<sup>21</sup> Proposed Casing and Cement Program

Hole Size	Casing Size	Casing weight/foot	Setting Depth	Sacks of Cement	Estimated TOC
17-1/2"	13-3/8	48#	1350'	850 sx	Circ to surface
12-1/4"	9-5/8"	36#	4000'	1000 sx	Circ to surface
8-3/4"	5-1/2"	17#	10300'	800 sx	3800'

22 Describe the proposed program. If this application is to DEEPEN or PLUG BACK, give the data on the present productive zone and proposed new productive zone.

Describe the blowout prevention program, if any. Use additional sheets if necessary.

Drill 17-1/2" hole to top of Anhydrite @  $\pm 1350'$ . Run and cement 13-3/8" casing. NU 13-5/8" 1500 psi annular. Drill 12-1/4" hole to 4000'. Run and cement 9-5/8" casing. NU 11" 3M BOP assembly and test to 3000 psi. Drill 8-3/4" hole to 10300'. Evaluate to run 5-1/2" production casing.

Permit Expires 1 Year From Approval  
Date Unless Drilling Underway

<sup>23</sup> I hereby certify that the information given above is true and complete to the best of my knowledge and belief.

Signature:

Printed name: Jim Kramer

Title: Sr. Drilling Engineer

Date:

Phone:

OIL CONSERVATION DIVISION

ORIGINAL FILED IN DISTRICT I  
DISTRICT I SUPERVISOR

Approved by:

Title:

Approval Date: OCT 28 2000

Expiration Date:

Conditions of Approval:

Attached ☐

4  
MP

DISTRICT I  
P. O. Box 1980  
Hobbs, NM 88241-1980

State of New Mexico  
Energy, Minerals, and Natural Resources Department

Form C-102  
Revised 02-10-94  
Instructions on back

DISTRICT II  
P. O. Drawer DD  
Artesia, NM 88211-0719

OIL CONSERVATION DIVISION

P. O. Box 2088  
Santa Fe, New Mexico 87504-2088

Submit to the Appropriate  
District Office  
State Lease - 4 copies  
Fee Lease - 3 copies

☐ AMENDED REPORT

DISTRICT III  
1000 Rio Brazos Rd.  
Aztec, NM 87410

DISTRICT IV  
P. O. Box 2088  
Santa Fe, NM 87507-2088

WELL LOCATION AND ACREAGE DEDICATION PLAT

1 API Number 30-025-35204		2 Pool Code —		3 Pool Name Wildcat; Ellenburger			
4 Property Code 26794		5 Property Name COOPER '3'				6 Well Number 6	
7 OGRID No. 014245		8 Operator Name MATADOR OPERATING COMPANY				9 Elevation 3581'	

10 SURFACE LOCATION

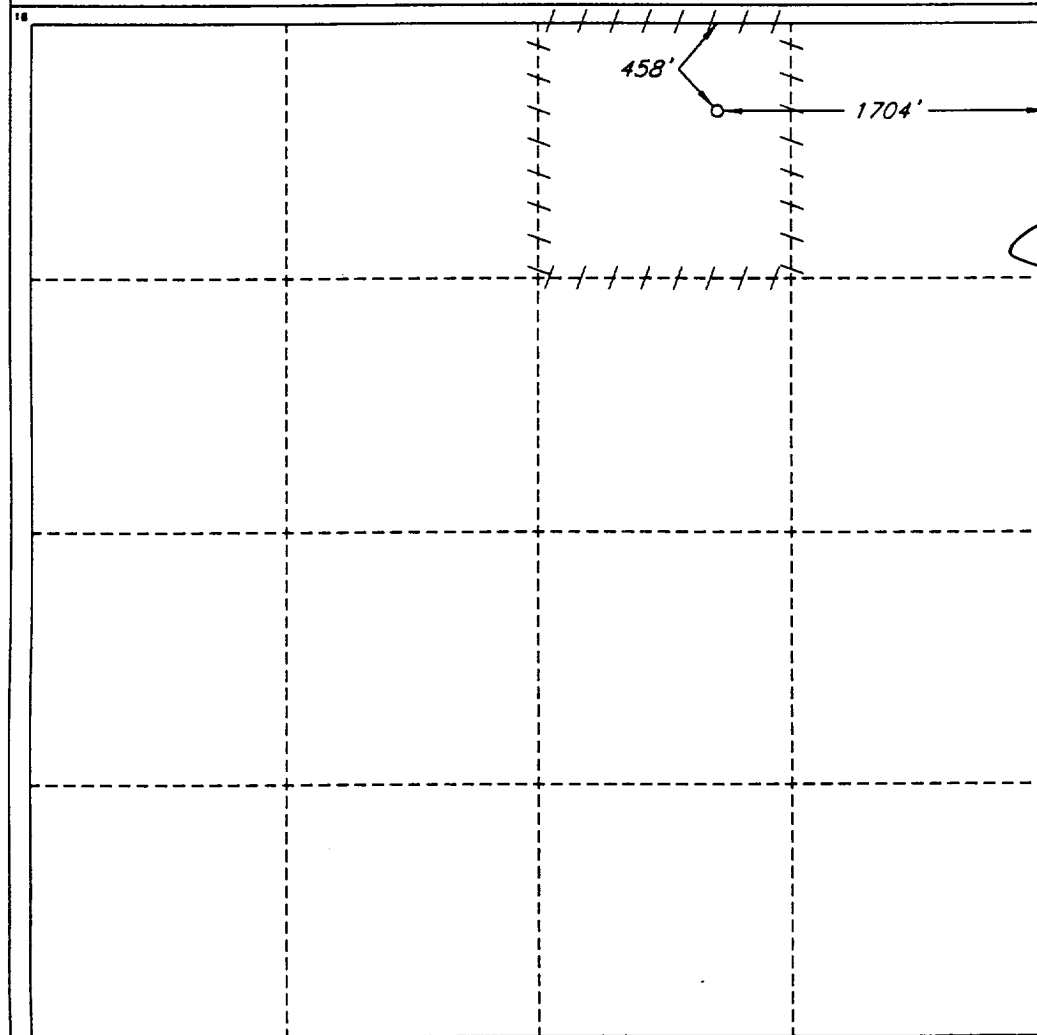
UL or lot no. B	Section 3	Township 20 SOUTH	Range 37 EAST, N.M.P.M.	Lot Ida	Feet from the 458'	North/South line NORTH	Feet from the 1704'	East/West line EAST	County LEA
--------------------	--------------	----------------------	----------------------------	---------	-----------------------	---------------------------	------------------------	------------------------	---------------

11 BOTTOM HOLE LOCATION IF DIFFERENT FROM SURFACE

UL or lot no.	Section	Township	Range	Lot Ida	Feet from the	North/South line	Feet from the	East/West line	County
---------------	---------	----------	-------	---------	---------------	------------------	---------------	----------------	--------

12 Dedicated Acres 40	13 Joint or Infill	14 Consolidation Code	15 Order No.
--------------------------	--------------------	-----------------------	--------------

NO ALLOWABLE WELL BE ASSIGNED TO THIS COMPLETION UNTIL ALL INTERESTS HAVE BEEN  
CONSOLIDATED OR A NON-STANDARD UNIT HAS BEEN APPROVED BY THE DIVISION



OPERATOR CERTIFICATION

I hereby certify that the information  
contained herein is true and complete  
to the best of my knowledge and belief.

Signature  
Jim Kramer

Printed Name  
Jim Kramer

Title  
Sr. Drilling Engineer

Date  
10/17/00

SURVEYOR CERTIFICATION

I hereby certify that the well  
location shown on this plat was  
plotted from field notes of actual  
surveys made by me or under  
my supervision, and that the  
same is true and correct to the  
best of my belief.

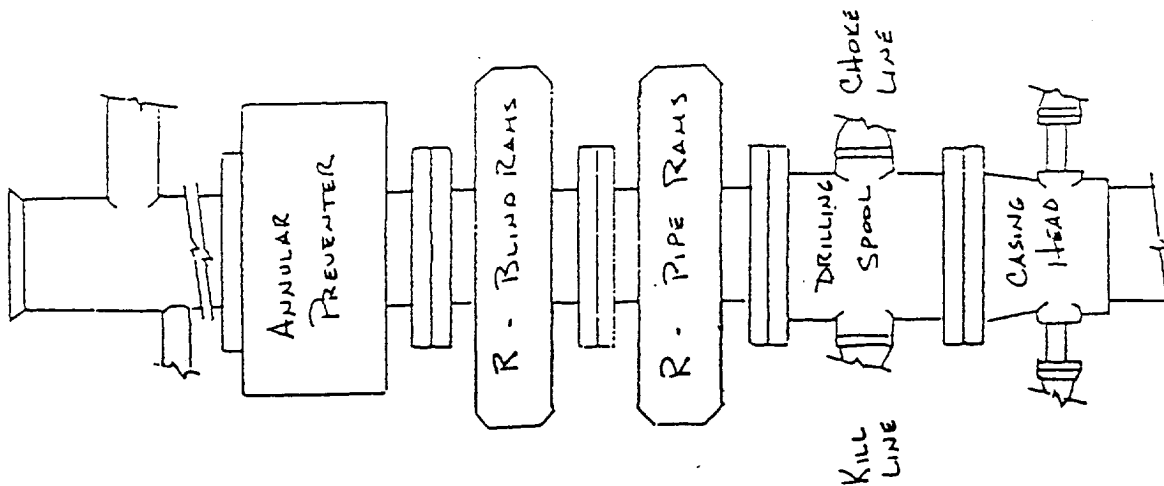
Date of Survey  
AUGUST NEW 2000

Signature and Seal of  
Professional Surveyor

V. LYNN  
BEZNER  
NO. 7920

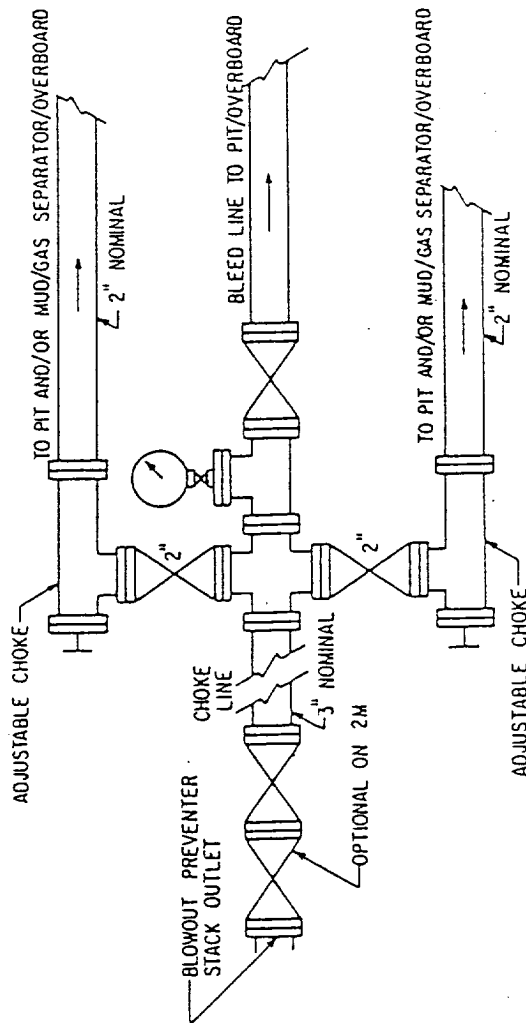
Certificate No.  
V. L. BEZNER R.P.S. #7920

JOB #70757 / 70 SW / V.H.B.



3000 PSI  
WORKING PRESSURE

Matador Operating Company  
Cooper 3-6  
458' FNL; 1704' FEL  
Sec 3, T20S, R37E  
Lea County, New Mexico  
Blowout Preventer



ABOVE DATE DOES NOT  
INDICATE WHEN  
CONFIDENTIAL LOGS  
WILL BE RELEASED

ELF

4/11/02