

District I
1625 N. French Dr., Hobbs, NM 88240
District II
811 South First, Artesia, NM 88210
District III
1000 Rio Brazos Road, Aztec, NM 87410
District IV
2040 South Pacheco, Santa Fe, NM 87505

State of New Mexico
Energy Minerals and Natural Resources

Oil Conservation Division
2040 South Pacheco
Santa Fe, NM 87505

Form C-101
Revised March 17, 1999

Submit to appropriate District Office
State Lease - 6 Copies
Fee Lease - 5 Copies

☒ AMENDED REPORT

APPLICATION FOR PERMIT TO DRILL, RE-ENTER, DEEPEN, PLUGBACK, OR ADD A ZONE

¹ Operator Name and Address SAGA PETROLEUM LLC 415 W WALL, SUITE 1900 MIDLAND TX 79701		² OGRID Number 148967
		³ API Number 30-025- 35265
⁴ Property Code 020311	⁵ Property Name MONUMENT	⁶ Well No. 6

⁷ Surface Location

UL or lot no. A	Section 12	Township 19S	Range 36E	Lot Idn	Feet from the 660	North/South line NORTH	Feet from the 660	East/West line EAST	County LEA
--------------------	---------------	-----------------	--------------	---------	----------------------	---------------------------	----------------------	------------------------	---------------

⁸ Proposed Bottom Hole Location If Different From Surface

UL or lot no.	Section	Township	Range	Lot Idn	Feet from the	North/South line	Feet from the	East/West line	County
---------------	---------	----------	-------	---------	---------------	------------------	---------------	----------------	--------

⁹ Proposed Pool 1 Eunice Monument Grayburg SA	¹⁰ Proposed Pool 2
---	-------------------------------

¹¹ Work Type Code DRILL-N	¹² Well Type Code OIL	¹³ Cable/Rotary ROTARY	¹⁴ Lease Type Code State	¹⁵ Ground Level Elevation 3731'
¹⁶ Multiple	¹⁷ Proposed Depth 4500'	¹⁸ Formation SAN ANDRES	¹⁹ Contractor	²⁰ Spud Date

²¹ Proposed Casing and Cement Program

Hole Size	Casing Size	Casing weight/foot	Setting Depth	Sacks of Cement	Estimated TOC
12-1/4"	8-5/8"	24#	350'	225 sx Prem+	circ-surf
7-7/8"	5-1/2"	14#	4500'	775 sx Prem+	circ-surf

²² Describe the proposed program. If this application is to DEEPEN or PLUG BACK, give the data on the present productive zone and proposed new productive zone.

Describe the blowout prevention program, if any. Use additional sheets if necessary.

Drill surface hole w/FW mud 8.4-8.8 ppg & 34-36 vis to 350'. Run 8-5/8" csg. WOC 8 hrs, cut off 8-5/8", install 2000 psi SOW WH & NU 3000 psi double Ram BOP & rotating head prior to drl out surf csg shoe, press test csg to 1000 psi for 15 mins. Drl 7-7/8" hole w/native brine wtr to 2500', mud up w/SW gel to vis 35-40, MW 9.5-10 ppg & WL 10-15 ccs. Log & run 5-1/2" csg. Cmt one stage w/775 sx Prem Plus w/gel & FLA. Circ cmt to surface, displace plug w/2% KCL FW.

State Lease B-10164

²³ I hereby certify that the information given above is true and complete to the best of my knowledge and belief. Signature: <i>Bonnie Husband</i> Printed Name: Bonnie Husband Title: Production Analyst Date: 11/22/2000		OIL CONSERVATION DIVISION Approved by: <i>ORIGINAL SIGNATURE OF DISTRICT SUPERVISOR</i> Title: Approval Date: NOV 28 2000 Expiration Date: Conditions of Approval: Attached <input type="checkbox"/>	
Phone: (915)684-4293			

11/22/2000

Dmp

DISTRICT I
P. O. Box 1980
Hobbs, NM 88241-1980

State of New Mexico
Encl. Minerals, and Natural Resources Department

Form C-102
Revised 02-10-94

Instructions on back

DISTRICT II
P. O. Drawer DD
Artesia, NM 88211-0719

DISTRICT III
1000 Rio Brazos Rd.
Aztec, NM 87410

OIL CONSERVATION DIVISION
P. O. Box 2088
Santa Fe, New Mexico 87504-2088

Submit to the Appropriate
District Office
State Lease - 4 copies
Fee Lease - 3 copies

☐ AMENDED REPORT

DISTRICT IV
P. O. Box 2088
Santa Fe, NM 87507-2088

WELL LOCATION AND ACREAGE DEDICATION PLAT

1 API Number 30-025-35265		2 Pool Code 23000		3 Pool Name Eunice Monument Grayburg SA			
4 Property Code 020311		5 Property Name MONUMENT				6 Well Number 6	
7 OGRID No. 148967		8 Operator Name SAGA PETROLEUM, LLC				9 Elevation 3731'	

" SURFACE LOCATION

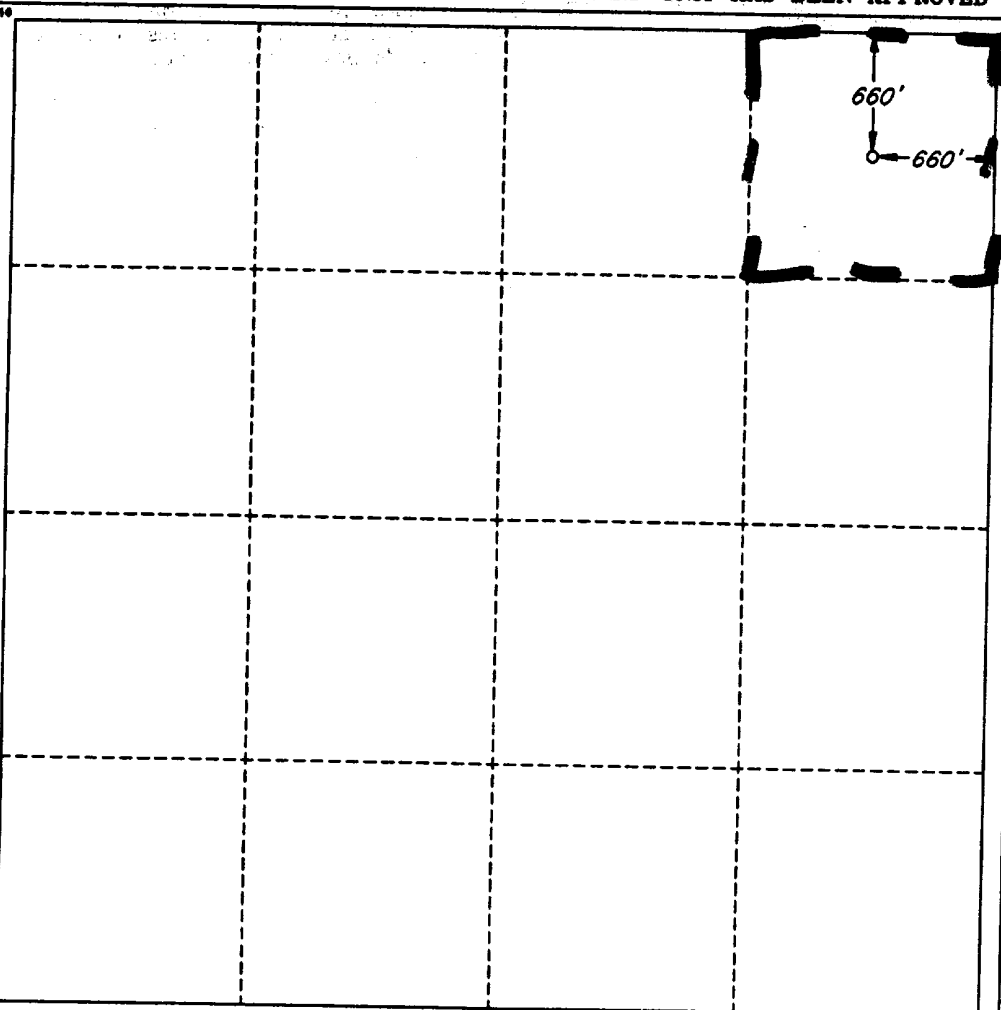
UL or lot no.	Section	Township	Range	Lot Ida	Feet from the	North/South line	Feet from the	East/West line	County
A	12	19 SOUTH	36 EAST, N.M.P.M.		660'	NORTH	660'	EAST	LEA

"BOTTOM HOLE LOCATION IF DIFFERENT FROM SURFACE

UL or lot no.	Section	Township	Range	Lot Ida	Feet from the	North/South line	Feet from the	East/West line	County

12 Dedicated Acres 40	13 Joint or Infill	14 Consolidation Code	15 Order No.
--------------------------	--------------------	-----------------------	--------------

NO ALLOWABLE WELL BE ASSIGNED TO THIS COMPLETION UNTIL ALL INTERESTS HAVE BEEN
CONSOLIDATED OR A NON-STANDARD UNIT HAS BEEN APPROVED BY THE DIVISION



OPERATOR CERTIFICATION

I hereby certify that the information
contained herein is true and complete
to the best of my knowledge and belief.

Signature
Bonnie Husband

Printed Name
Bonnie Husband

Title
Production Analyst

Date
11-22-2000

SURVEYOR CERTIFICATION

I hereby certify that the well
location shown on this plat was
plotted from field notes of actual
surveys made by me or under
my supervision, and that the
same is true and correct to the
best of my belief.

Date of Survey
NOVEMBER 14, 2000

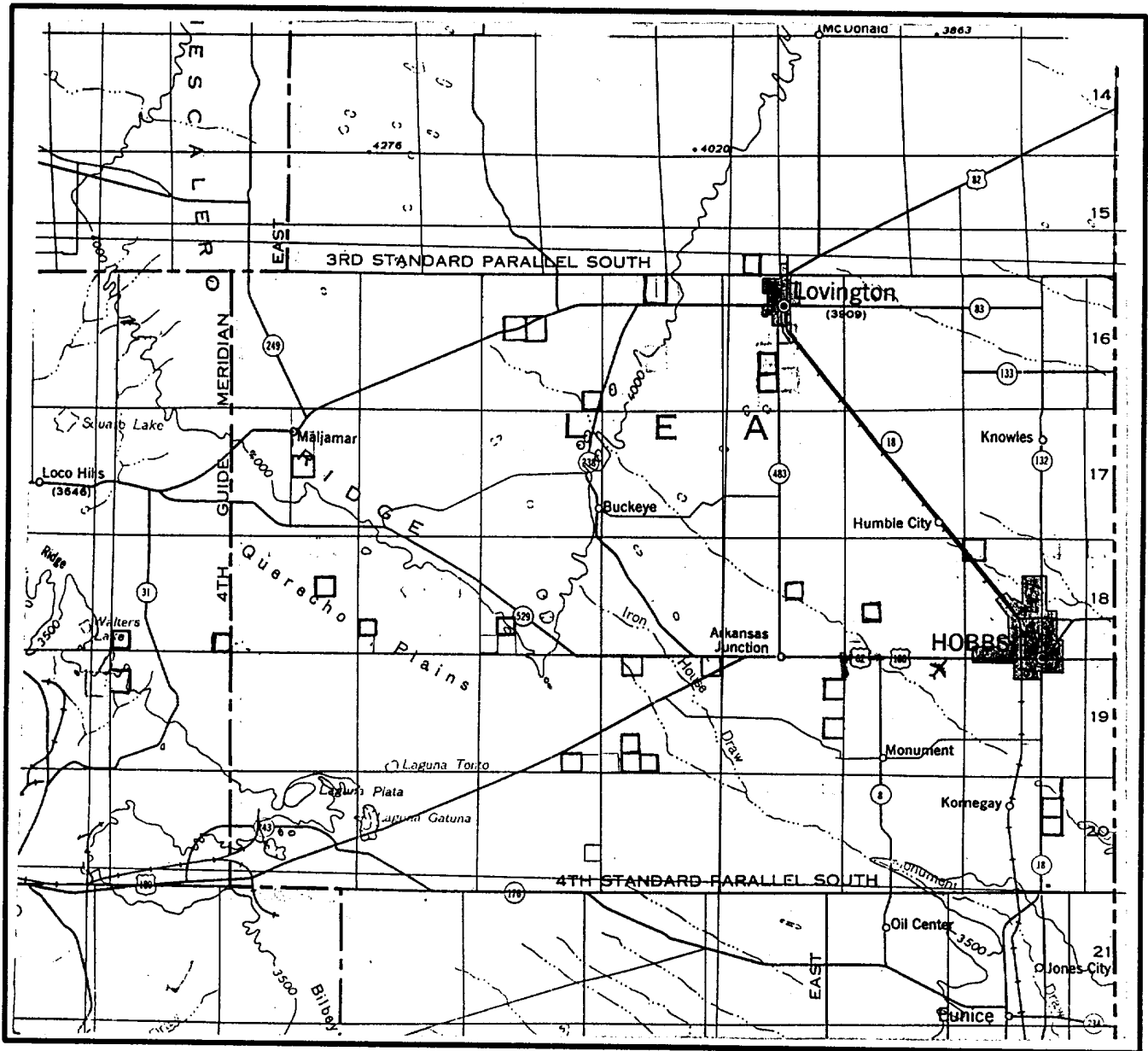
Signature
Professional
V. Lynn Bezner

STATE OF NEW MEXICO
V. LYNN BEZNER
NO. 7920
SURVEYOR

Certified
V. L. BEZNER, LAND P. #7920

JOB # 72000000 NE / JCP

VICINITY MAP



SECTION 12 TWP 19-S RGE 36-E
 SURVEY NEW MEXICO PRINCIPAL MERIDIAN
 COUNTY LEA STATE NM
 DESCRIPTION 660' FNL & 660' FEL

OPERATOR SAGA PETROLEUM, LLC
 LEASE MONUMENT #6

DISTANCE & DIRECTION FROM JCT. OF HWY 8 & HWY
62, 180 ±5 MILES NORTH OF MONUMENT, GO WEST
2.0 MILES ON HWY 62, 180, THENCE SOUTH 1.1 MILE
ON LEASE ROAD TO A POINT ±600' EAST OF LOCATION.



This location has been very carefully staked on the ground according to the best official survey records, maps, and other data available to us.
 Review this plot and notify us immediately of any possible discrepancy.

TOPOGRAPHIC LAND SURVEYORS

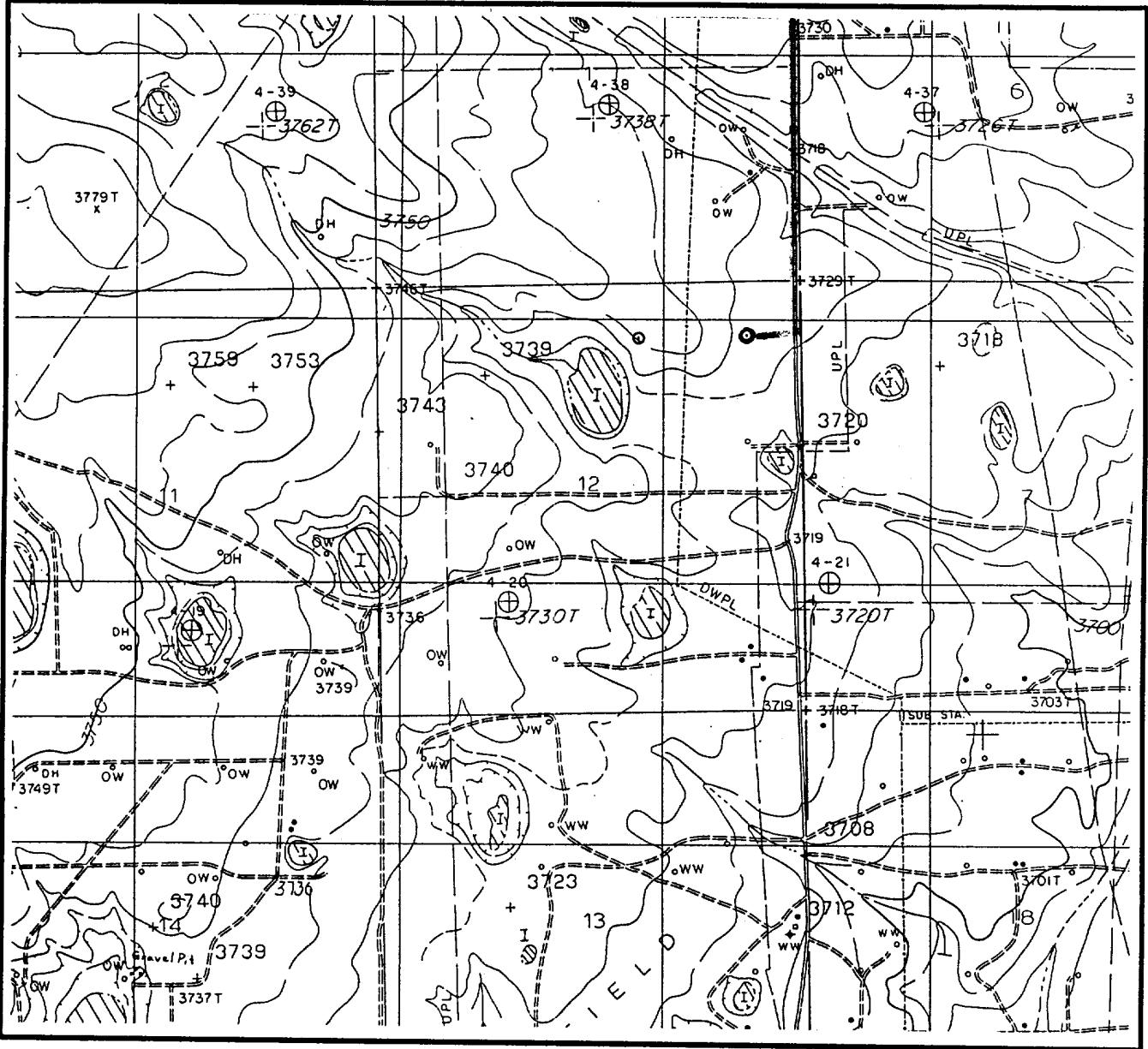
Surveying & Mapping for the Oil & Gas Industry

1307 N. HOBART
 PAMPA, TX. 79065
 (800) 658-6382

6709 N. CLASSEN BLVD.
 OKLAHOMA CITY, OK. 73116
 (800) 654-3219

2903 N. BIG SPRING
 MIDLAND, TX. 79705
 (800) 767-1653

LOCATION & ELEVATION VERIFICATION MAP



SCALE : 1" = 2000' CONTOUR INTERVAL 10 FEET

SECTION 12 TWP 19-S RGE 36-R
SURVEY NEW MEXICO PRINCIPAL MERIDIAN
COUNTY LEA STATE NM
DESCRIPTION 660' FNL & 660' FEL
ELEVATION 3731'
OPERATOR SAGA PETROLEUM, LLC
LEASE MONUMENT #6

U.S.G.S. TOPOGRAPHIC MAP
MONUMENT NORTH, NEW MEXICO
SCALED LAT. N = 32°40'49"
LONG. W = 103°18'03"



This location has been very carefully staked on the ground according to the best official survey records, maps, and other data available to us.
Review this plot and notify us immediately of any possible discrepancy.

TOPOGRAPHIC LAND SURVEYORS

Surveying & Mapping for the Oil & Gas Industry

1307 N. HOBART
PAMPA, TX. 79065
(800) 658-6382

6709 N. CLASSEN BLVD.
OKLAHOMA CITY, OK. 73116
(800) 654-3219

2903 N. BIG SPRING
MIDLAND, TX. 79705
(800) 767-1653