

UNITED STATES
DEPARTMENT OF THE INTERIOR
BUREAU OF LAND MANAGEMENT

N.M. Oil Cons. Division
1625 N. French Dr.
Hobbs, NM 88240

FORM APPROVED
Budget Bureau No. 1004-0135
Expires: March 31, 1993

Lease Designation and Serial No.
NM 17238

SUNDRY NOTICES AND REPORTS ON WELLS

Do not use this form for proposals to drill or to deepen or reentry to a different reservoir.
Use "APPLICATION FOR PERMIT-" for such proposals

SUBMIT IN TRIPLICATE

1. Type of Well

☒ Oil Well ☐ Gas Well ☐ Other

2. Name of Operator

Nearburg Producing Company

3. Address and Telephone No.

3300 North A Street, Building 2, Suite 120, Midland, Texas 79705 (915) 686-8235

4. Location of Well (Footage, Sec., T., R., M., or Survey Description)

SHL: Unit H, 2310' FNL and 130' FEL, Section 3, T20S, R33E

BHL: Unit H, 1650' FNL and 990' FEL, Section 3, T20S, R33E

6. If Indian, Allottee or Tribe Name

7. If Unit or CA, Agreement Designation

8. Well Name and No.

Python 3 Federal #4

9. API Well No.

30-025-35474

10. Field and Pool, or Exploratory Area

~~Torgem~~ Bone Spring

11. County or Parish, State

Lea County, New Mexico

12. CHECK APPROPRIATE BOX(es) TO INDICATE NATURE OF NOTICE, REPORT, OR OTHER DATA

TYPE OF SUBMISSION

☒ Notice of Intent

☐ Subsequent Report

☐ Final Abandonment Notice

TYPE OF ACTION

☐ Abandonment

☐ Recompletion

☐ Plugging Back

☐ Casing Repair

☐ Altering Casing

☒ Other Change location

☐ Change of Plans

☐ New Construction

☐ Non-Routine Fracturing

☐ Water Shut-Off

☐ Conversion to Injection

☐ Dispose Water

(Note: Report results of multiple completion on Well Completion or Recompletion Report and Log form.)

13. Describe Proposed or Completed Operations (Clearly state all pertinent details, and give pertinent dates, including estimated date of starting any proposed work. If well is directionally drilled, give subsurface locations and measured and true vertical depths for all markers and zones pertinent to this work.)*

Nearburg Producing Company requests approval to change surface location on the above referenced well from 2310' FNL and 230' FEL, Section 3, T20S, R33E to Unit H, 2310' FNL and 130' FEL, Section 3, T20, R33E. The BHL will remain the same (Unit H, 1650' FNL and 990' FEL, Section 3, T20S R33E).

(Attached C-102)

14. I hereby certify that the foregoing is true and correct

Signed Kim Skelton
(This space for Federal or State office use)

Title Regulatory Analyst

Date 06/01/01

Approved by /s/ Mary J. Rugwell
Conditions of approval, if any:

FOR
Title FIELD MANAGER

Date JUN 22 2001

Title 18 U.S.C. Section 1001, makes it a crime for any person knowingly and willfully to make to any department or agency of the United States any false, fictitious or fraudulent statements or representations as to any matter within its jurisdiction.

*See Instruction on Reverse Side

4
RECEIVED
Hobbs
OCD

RECEIVED
JUN 01 2001
EJLJ
FBI/DOJ

DISTRICT I
P.O. Box 1980, Hobbs, NM 88241-1980

State of New Mexico
Energy, Minerals and Natural Resources Department

Form C-102
Revised February 10, 1994
Submit to Appropriate District Office
State Lease - 4 Copies
Fee Lease - 3 Copies

DISTRICT II
P.O. Drawer DD, Artesia, NM 88211-0719

OIL CONSERVATION DIVISION

P.O. Box 2088
Santa Fe, New Mexico 87504-2088

DISTRICT III
1000 Rio Brazos Rd., Aztec, NM 87410

DISTRICT IV
P.O. Box 2088, SANTA FE, N.M. 87504-2088

WELL LOCATION AND ACREAGE DEDICATION PLAT

☐ AMENDED REPORT

API Number 30-025-35474	Pool Code 27220 58960	Pool Name Teas Gem; Bone Spring
Property Code 25261	Property Name PYTHON "3" FEDERAL	Well Number 4
OGRID No. 15742	Operator Name NEARBURG PRODUCING CO.	Elevation 3576'

Surface Location

UL or lot No.	Section	Township	Range	Lot Idn	Feet from the	North/South line	Feet from the	East/West line	County
H	3	20S	33E		2310	NORTH	130	EAST	LEA

Bottom Hole Location If Different From Surface

UL or lot No.	Section	Township	Range	Lot Idn	Feet from the	North/South line	Feet from the	East/West line	County
H	3	20S	33E		1650	NORTH	990	EAST	LEA

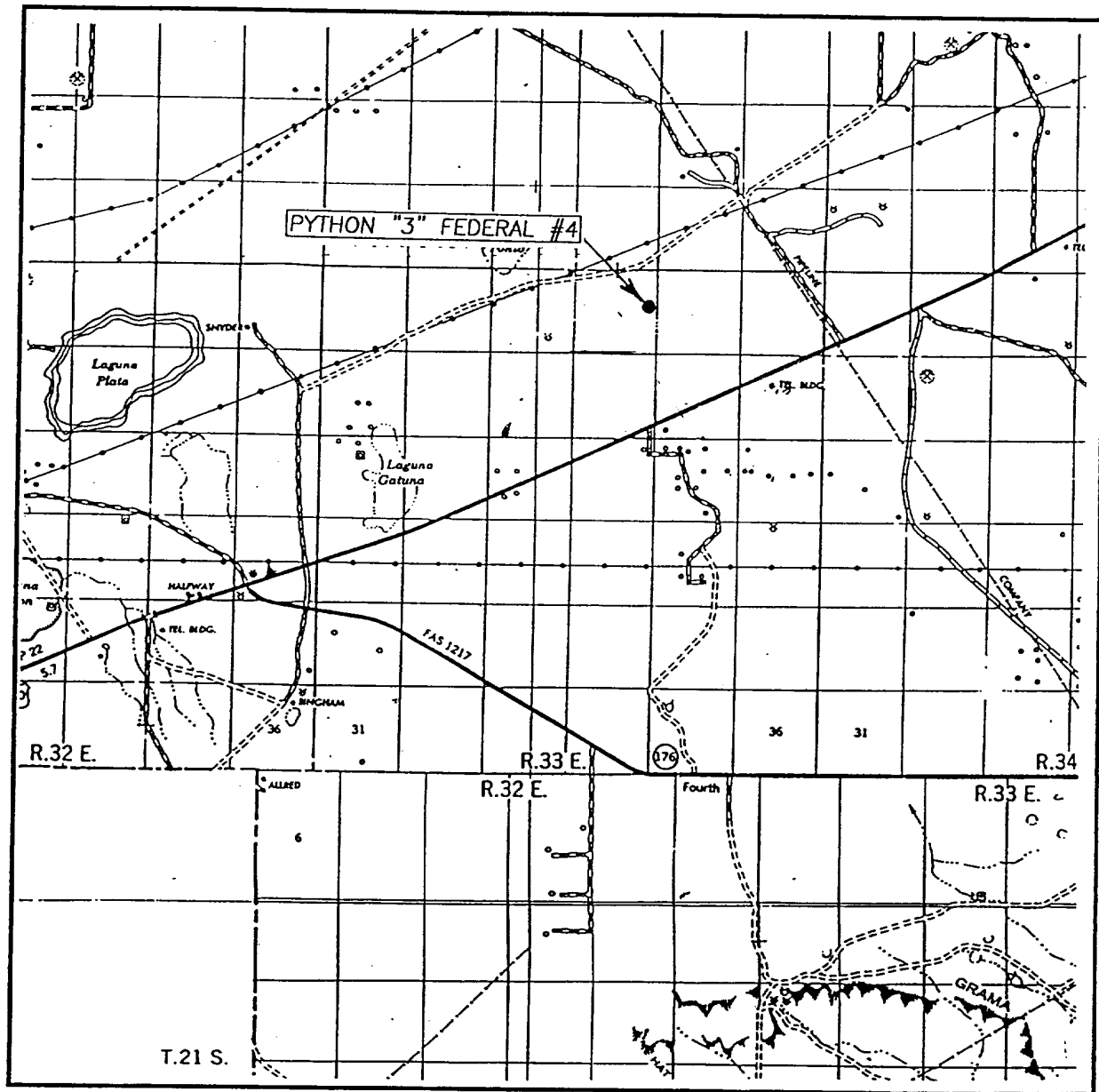
Dedicated Acres	Joint or Infill	Consolidation Code	Order No.
40			

NO ALLOWABLE WILL BE ASSIGNED TO THIS COMPLETION UNTIL ALL INTERESTS HAVE BEEN CONSOLIDATED
OR A NON-STANDARD UNIT HAS BEEN APPROVED BY THE DIVISION

<p>DETAIL</p> <p>3575.3' 3573.7'</p> <p>3576.4' 3576.4'</p>	<p>OPERATOR CERTIFICATION</p> <p>I hereby certify the the information contained herein is true and complete to the best of my knowledge and belief.</p> <p><i>Kim Stewart</i> Signature</p> <p>Kim Stewart Printed Name</p> <p>Regulatory Analyst Title</p> <p>June 1, 2001 Date</p>
	<p>SURVEYOR CERTIFICATION</p> <p>I hereby certify that the well location shown on this plat was plotted from field notes of actual surveys made by me or under my supervision, and that the same is true and correct to the best of my belief.</p> <p>MAY 29, 2001</p> <p>Date Surveyed</p> <p>Signature & Seal of Professional Surveyor</p> <p>Professional Surveyor</p> <p>RONALD J. EIDSON</p> <p>01-11-0667</p> <p>Certificate No. RONALD J. EIDSON 3239 GARY EIDSON 12641</p>

RECEIVED
JUN 9 2001
FBI
SPRINGFIELD

VICINITY MAP



SCALE: 1" = 2 MILES

SEC. 3 TWP. 20-S RGE. 33-E

SURVEY N.M.P.M.

COUNTY LEA

DESCRIPTION 2310' FNL & 130' FEL

ELEVATION 3576'

OPERATOR NEARBURG PRODUCING COMPANY

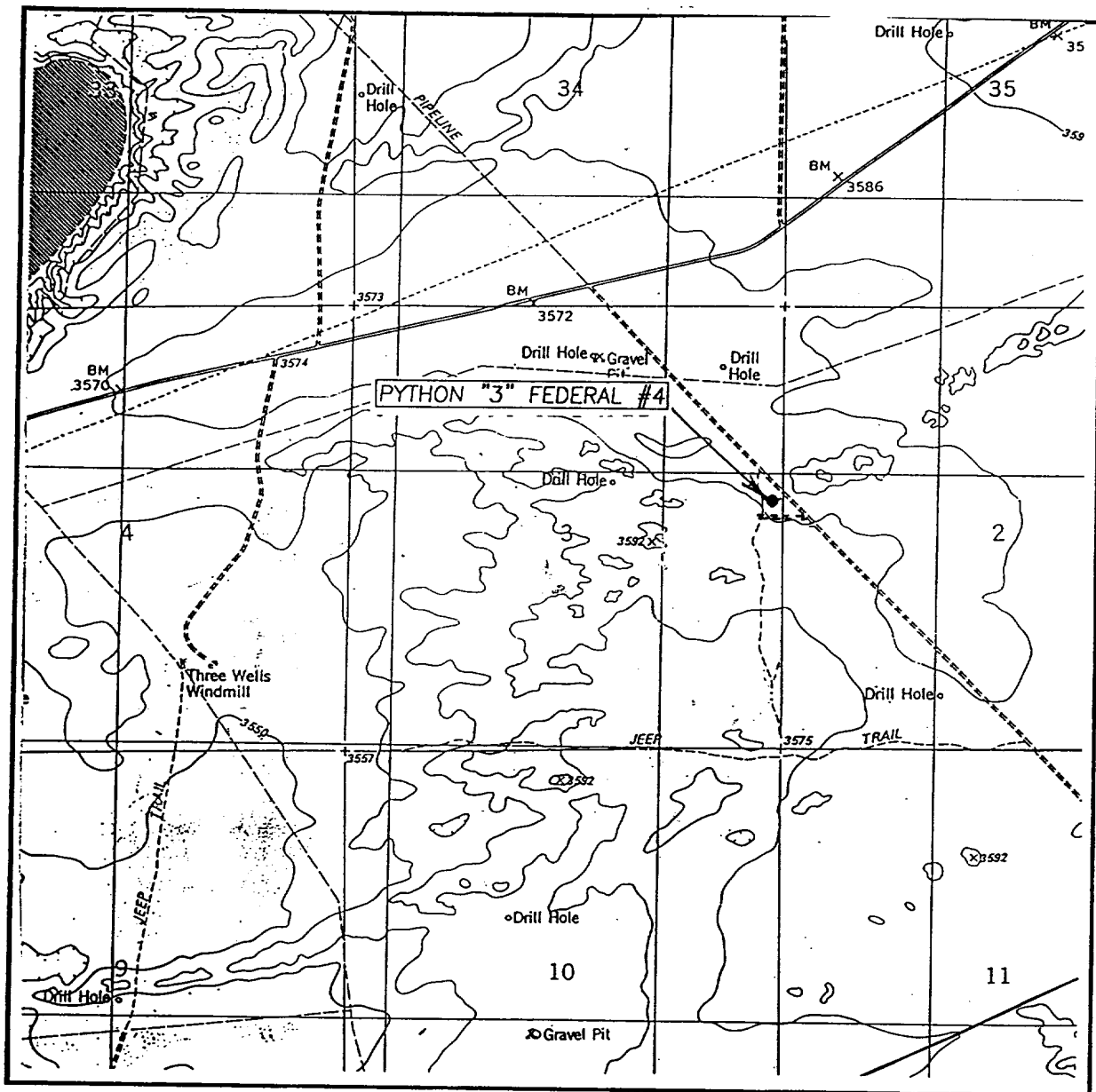
LEASE PYTHON "3" FEDERAL

JOHN WEST SURVEYING
HOBBS, NEW MEXICO
(505) 393-3117

RECEIVED
JUN 0 2001
ELM
2001-06-01

RECEIVED
JUN 0 2001
ELM
2001-06-01

LOCATION VERIFICATION MAP



SCALE: 1" = 2000'

CONTOUR INTERVAL: 10'
LAGUNA GATUNA, N.M.

SEC. 3 TWP. 20-S RGE. 33-E

SURVEY N.M.P.M.

COUNTY LEA

DESCRIPTION 2310' FNL & 130' FEL

ELEVATION 3576'

OPERATOR NEARBURG PRODUCING COMPANY

LEASE PYTHON "3" FEDERAL

U.S.G.S. TOPOGRAPHIC MAP

LAGUNA GATUNA, N.M.

JOHN WEST SURVEYING
HOBBS, NEW MEXICO
(505) 393-3117

4
JUN 2001
RECEIVED
Hobbs
OCD

RECEIVED
JUN 01 2001
BIA
FOWELL NM