

DISTRICT I  
P. O. Box 1980  
Hobbs, NM 88241-1980

State of New Mexico  
Energy, Minerals, and Natural Resources Department

Form C-102  
Revised 02-10-94  
Instructions on back

DISTRICT II  
P. O. Drawer DD  
Artesia, NM 88211-0719

DISTRICT III  
1000 Rio Brazos Rd.  
Aztec, NM 87410

OIL CONSERVATION DIVISION  
P. O. Box 2088  
Santa Fe, New Mexico 87504-2088

Submit to the Appropriate  
District Office  
State Lease - 4 copies  
Fee Lease - 3 copies

DISTRICT IV  
P. O. Box 2088  
Santa Fe, NM 87507-2088

☐ AMENDED REPORT

WELL LOCATION AND ACREAGE DEDICATION PLAT

1 API Number 30-025-35477		2 Pool Code 47090		3 Pool Name Monument Tubb			
4 Property Code 025471		5 Property Name LAUGHLIN				6 Well Number 4	
7 OGRID No. 014245		8 Operator Name MATADOR OPERATING COMPANY				9 Elevation 3555'	

10 SURFACE LOCATION

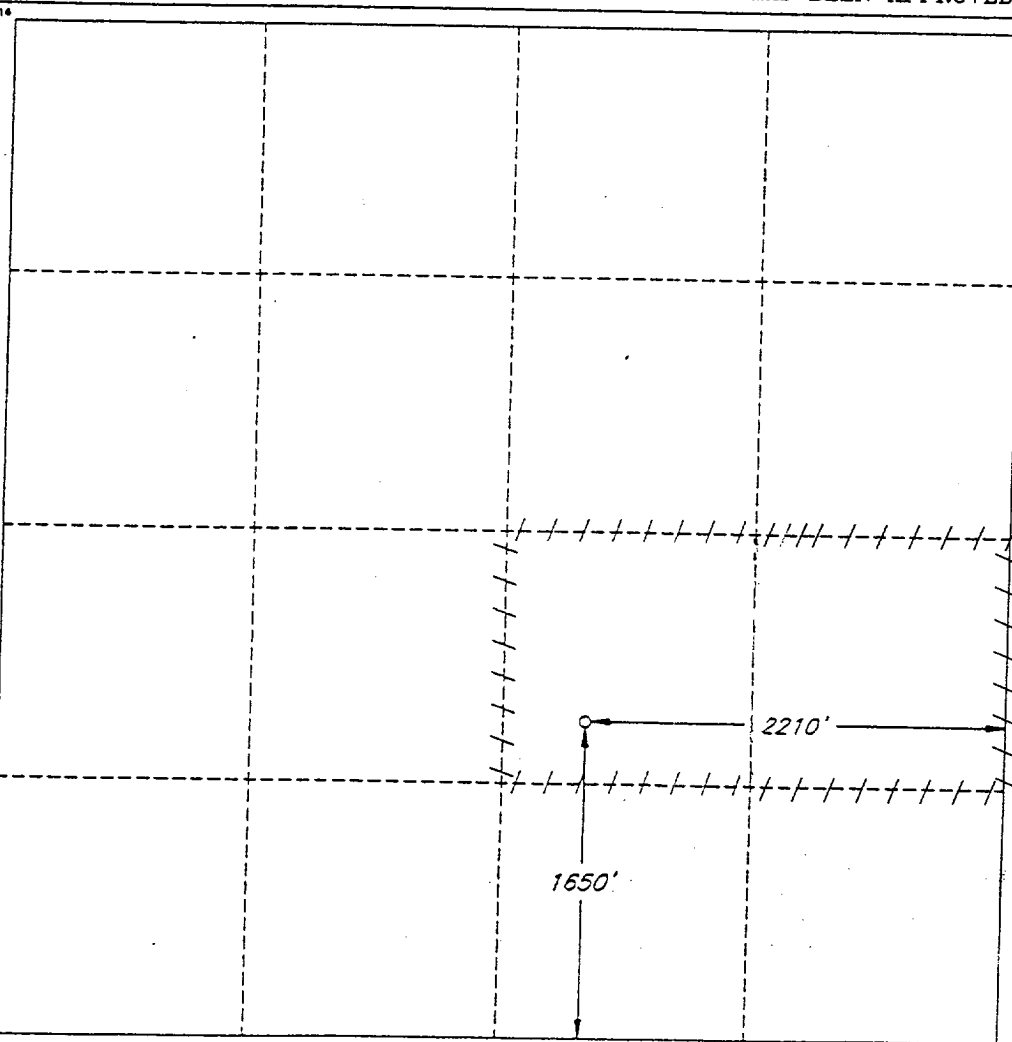
UL or lot no. J	Section 4	Township 20 SOUTH	Range 37 EAST, N.M.P.M.	Lot Ida	Feet from the 1650'	North/South line SOUTH	Feet from the 2210'	East/West line EAST	County LEA
--------------------	--------------	----------------------	----------------------------	---------	------------------------	---------------------------	------------------------	------------------------	---------------

11 BOTTOM HOLE LOCATION IF DIFFERENT FROM SURFACE

UL or lot no.	Section	Township	Range	Lot Ida	Feet from the	North/South line	Feet from the	East/West line	County
---------------	---------	----------	-------	---------	---------------	------------------	---------------	----------------	--------

12 Dedicated Acres 80	13 Joint or Infill	14 Consolidation Code	15 Order No.
--------------------------	--------------------	-----------------------	--------------

NO ALLOWABLE WELL BE ASSIGNED TO THIS COMPLETION UNTIL ALL INTERESTS HAVE BEEN CONSOLIDATED OR A NON-STANDARD UNIT HAS BEEN APPROVED BY THE DIVISION



OPERATOR CERTIFICATION

I hereby certify that the information contained herein is true and complete to the best of my knowledge and belief.

Signature

Printed Name

Jim Kramer

Title

Sr. Drilling Engineer

Date

3/20/01

SURVEYOR CERTIFICATION

I hereby certify that the well location shown on this plat was plotted from field notes of actual surveys made by me or under my supervision, and that the same is true and correct to the best of my belief.

Date of Survey

MARCH 5, 2001

Signature and Seal of  
Professional Surveyor

V. LYNN  
BEZNER  
NO. 7920  
Certificate No. 7920-01

V. L. BEZNER R.P.S. #7920

JOB #75047-71 SE / V.H.B.

