

DISTRICT I  
1625 N. French Dr., Hobbs, NM 88240

DISTRICT II  
511 South First, Artesia, NM 88210

DISTRICT III  
1000 Rio Brazos Ed., Aztec, NM 87410

DISTRICT IV  
2040 South Pacheco, Santa Fe, NM 87505

State of New Mexico  
Energy, Minerals and Natural Resources Department

Form C-102  
Revised March 17, 1999

Submit to Appropriate District Office  
State Lease - 4 Copies  
Fee Lease - 3 Copies

OIL CONSERVATION DIVISION

2040 South Pacheco  
Santa Fe, New Mexico 87504-2088

☐ AMENDED REPORT

WELL LOCATION AND ACREAGE DEDICATION PLAT

API Number <b>30-025-35617</b>	Pool Code <b>23000</b>	Pool Name <b>EUNICE-MONUMENT/GRAYBURG-SAN ANDRES</b>
Property Code <b>000135</b>	Property Name <b>NMGSAU BLK 11, NO 22</b>	Well Number <b>317</b>
OGRID No. <b>000495</b>	Operator Name <b>AMERADA HESS CORPORATION</b>	Elevation <b>3598'</b>

Surface Location

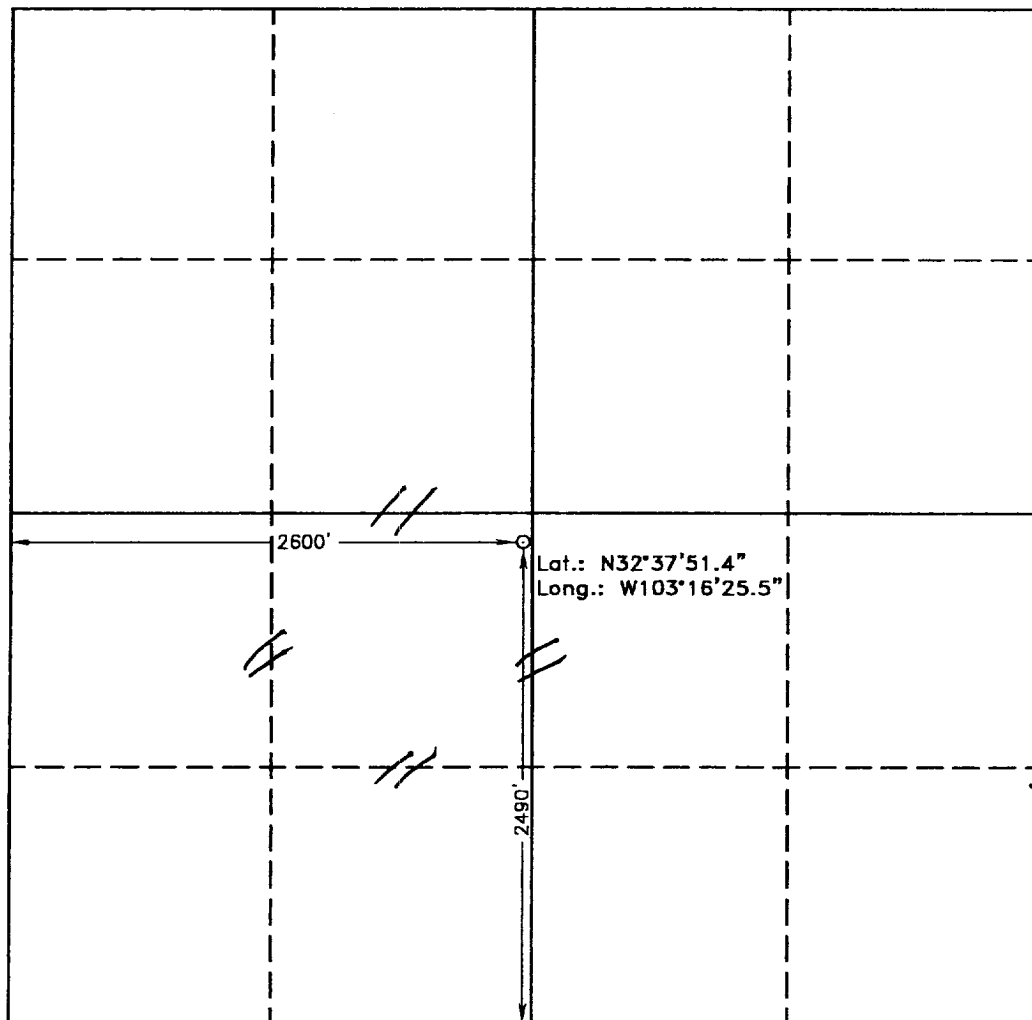
UL or lot No.	Section	Township	Range	Lot Idn	Feet from the	North/South line	Feet from the	East/West line	County
<b>K</b>	<b>29</b>	<b>19 S</b>	<b>37 E</b>		<b>2490</b>	<b>SOUTH</b>	<b>2600</b>	<b>WEST</b>	<b>LEA</b>

Bottom Hole Location If Different From Surface

UL or lot No.	Section	Township	Range	Lot Idn	Feet from the	North/South line	Feet from the	East/West line	County

Dedicated Acres	Joint or Infill	Consolidation Code	Order No.
<b>40</b>	<b>Y</b>	<b>U</b>	<b>UNITIZATION ORDER #R-1994 / WF ORDER #R-9596</b>

NO ALLOWABLE WILL BE ASSIGNED TO THIS COMPLETION UNTIL ALL INTERESTS HAVE BEEN CONSOLIDATED  
OR A NON-STANDARD UNIT HAS BEEN APPROVED BY THE DIVISION



OPERATOR CERTIFICATION

I hereby certify the the information  
contained herein is true and complete to the  
best of my knowledge and belief.

*Ann Williams*  
Signature

**ANN WILLIAMS**  
Printed Name

**SR. STAFF ASSOCIATE**  
Title

**06/28/01**  
Date

SURVEYOR CERTIFICATION

I hereby certify that the well location shown  
on this plat was plotted from field notes of  
actual surveys made by me or under my  
supervision, and that the same is true and  
correct to the best of my belief.

**JUNE 11, 2001**

Date Surveyed  
Signature of **GARY L. JONES**  
Professional Surveyor

