

District II

811 South First, Artesia, NM 88210

District III

1000 Rio Brazos Road, Aztec, NM 87410

District IV

2040 South Pacheco, Santa Fe, NM 87505

Oil Conservation Division

2040 South Pacheco

Santa Fe, NM 87505

Submit to appropriate District Office

State Lease - 6 Copies

Fee Lease - 5 Copies

☐ AMENDED REPORT

APPLICATION FOR PERMIT TO DRILL, RE-ENTER, DEEPEN, PLUGBACK, OR ADD A ZONE

¹ Operator Name and Address Xeric Oil & Gas Corporation PO Box 352 Midland, Texas 79702		² OGRID Number 025482
³ Property Code 21599	⁴ Property Name CAIN	⁵ API Number 30-025-35658
		⁶ Well No. 4

⁷ Surface Location

UL or lot no.	Section	Township	Range	Lot id#	Feet from the	North/South line	Feet from the	East/West line	County
K	14	19-S	38-E		1980	South	1980	West	Lea

⁸ Proposed Bottom Hole Location If Different From Surface

UL or lot no.	Section	Township	Range	Lot id#	Feet from the	North/South line	Feet from the	East/West line	County

⁹ Proposed Pool 1 Nadine Drinkard ABO	¹⁰ Proposed Pool 2 Blinbry Oil & Gas
---	--

¹¹ Work Type Code N	¹² Well Type Code O	¹³ Cable/Rotary R	¹⁴ Lease Type Code P	¹⁵ Ground Level Elevation 3602'
¹⁶ Multiple No	¹⁷ Proposed Depth 8500'	¹⁸ Formation ABO	¹⁹ Contractor Key Energy Co.	²⁰ Spud Date ASAP

²¹ Proposed Casing and Cement Program

Hole Size	Casing Size	Casing weight/foot	Setting Depth	Sacks of Cement	Estimated TOC
12 1/4	8 5/8	24	1600'	850	Circulated
7 7/8	5 1/2	17	8500'	900	Circ-Surface

²² Describe the proposed program. If this application is to DEEPEN or PLUG BACK, give the data on the present productive zone and proposed new productive zone.

Describe the blowout prevention program, if any. Use additional sheets if necessary.

1. Drill 12 1/4" hole to approximately 1600' or hard formation w/fresh water
2. Set 8 5/8" csg & cement w/650 sx "C" + 4% gel + 2% Cacl + 200 sx "C": 2% Calc; circulate cement to surface
3. Drill 7 7/8" hole with brine water to 8500'. Run open hole logs
4. Set 5 1/2" csg. Cement w/555 sx "C" 35:65 pos + 6% gel + 5% salt + .25% celloflake; tail w/345 sx "C"; circulate to surface

²³ I hereby certify that the information given above is true and complete to the best of my knowledge and belief.

Signature:

Printed name: R. C. Barnett

Title: President

Date: 08/10/01

Phone: 915-683-3171

OIL CONSERVATION DIVISION

Approved by:

Orig. Signed by
Paul Kautz
Geologist

Title:

Approval Date: AUG 15 2001

Expiration Date:

Conditions of Approval:

Attached ☐

Permit Expires 1 Year From Approval
Date Unless Drilling Underway

J
C
Ah
m

DISTRICT I
P.O. Box 1980, Hobbs, NM 88241-1980

DISTRICT II
P.O. Drawer DD, Artesia, NM 88211-0719

DISTRICT III
1000 Rio Brazos Rd., Artec, NM 87410

DISTRICT IV
P.O. BOX 2088, SANTA FE, N.M. 87504-2088

State of New Mexico
Energy, Minerals and Natural Resources Department

OIL CONSERVATION DIVISION
P.O. Box 2088
Santa Fe, New Mexico 87504-2088

Form C-102
Revised February 10, 1994
Submit to Appropriate District Office
State Lease - 4 Copies
Fee Lease - 3 Copies

WELL LOCATION AND ACREAGE DEDICATION PLAT

☐ AMENDED REPORT

API Number 30-025-35658	Pool Code 47510	Pool Name Nadine Drinkard ABO
Property Code 21599	Property Name CAIN	Well Number 4
OGRM No. 025482	Operator Name XERIC OIL & GAS CORPORATION	Elevation 3602'

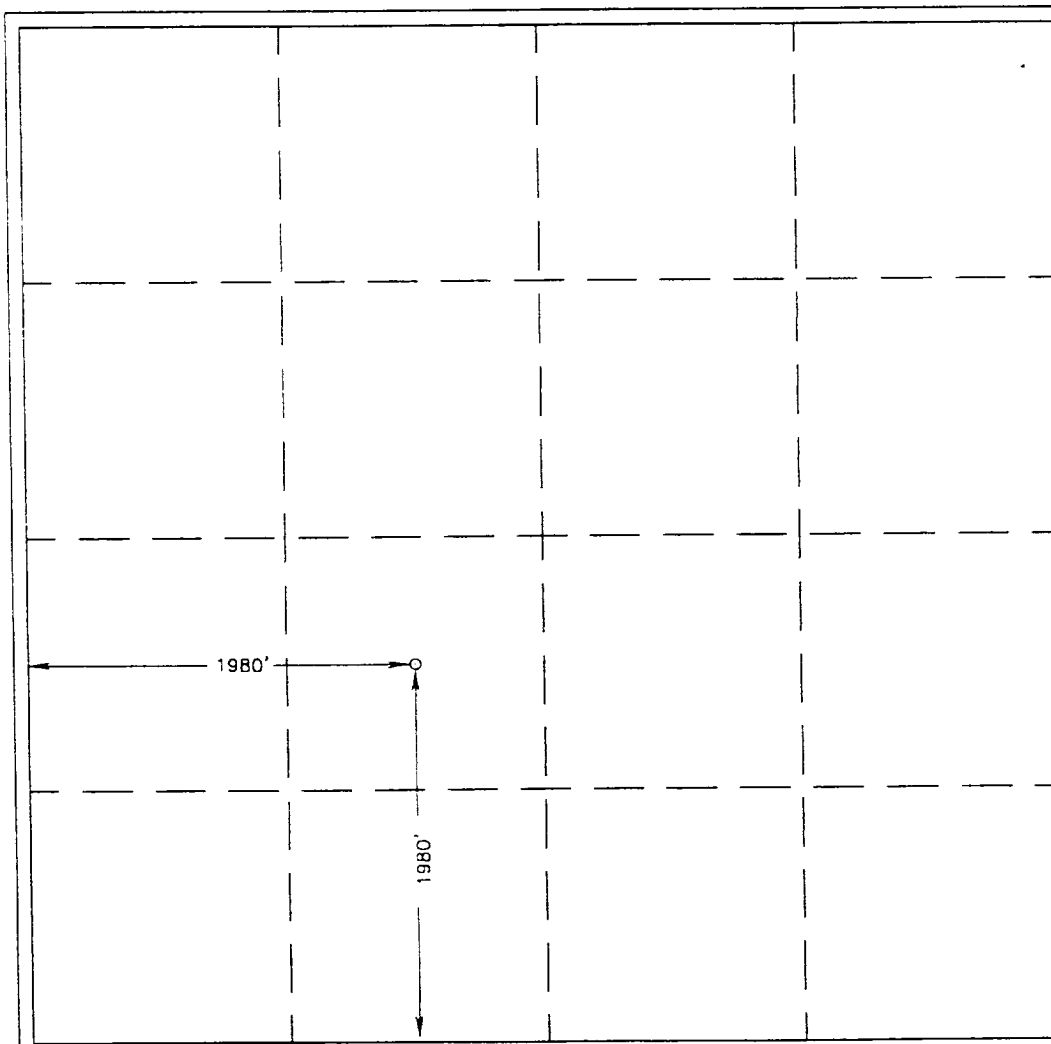
Surface Location

UL or lot No. K	Section 14	Township 19-S	Range 38-E	Lot Idn	Feet from the 1980	North/South line SOUTH	Feet from the 1980	East/West line WEST	County LEA
---------------------------	----------------------	-------------------------	----------------------	---------	------------------------------	----------------------------------	------------------------------	-------------------------------	----------------------

Bottom Hole Location If Different From Surface

UL or lot No.	Section	Township	Range	Lot Idn	Feet from the	North/South line	Feet from the	East/West line	County
Dedicated Acres 40	Joint or Infill	Consolidation Code	Order No.						

NO ALLOWABLE WILL BE ASSIGNED TO THIS COMPLETION UNTIL ALL INTERESTS HAVE BEEN CONSOLIDATED
OR A NON-STANDARD UNIT HAS BEEN APPROVED BY THE DIVISION



OPERATOR CERTIFICATION

I hereby certify the the information
contained herein is true and complete to the
best of my knowledge and belief.

R C Barnett
Signature

R. C. Barnett
Printed Name

President
Title

08/10/01
Date

SURVEYOR CERTIFICATION

I hereby certify that the well location shown
on this plat was plotted from field notes of
actual surveys made by me or under my
supervision and that the same is true and
correct to the best of my belief.

JULY 31, 2001

Date Surveyed AWB

Signature & Seal of
Professional Surveyor

Barry B. Edson 8/11/01
01.11.0902

Certificate No. RONALD J. EIDSON 3239
GARY EIDSON 12641

DISTRICT I
P.O. Box 1999, Hobbs, NM 88241-1999

State of New Mexico
Energy, Minerals and Natural Resources Department

Form C-102
Revised February 10, 1994
Submit to Appropriate District Office
State Lease - 4 Copies
Fee Lease - 3 Copies

DISTRICT II
P.O. Drawer DD, Artesia, NM 88211-0719

OIL CONSERVATION DIVISION
P.O. Box 2088
Santa Fe, New Mexico 87504-2088

DISTRICT III
1000 Rio Brazos Rd., Asteo, NM 87410

DISTRICT IV
P.O. BOX 2088, SANTA FE, N.M. 87504-2088

WELL LOCATION AND ACREAGE DEDICATION PLAT

☐ AMENDED REPORT

API Number 30-025-35658	Pool Code 6660	Pool Name Blinebry Oil & Gas
Property Code 21599	Property Name CAIN	Well Number 4
OGRID No. 025482	Operator Name XERIC OIL & GAS CORPORATION	Elevation 3602'

Surface Location

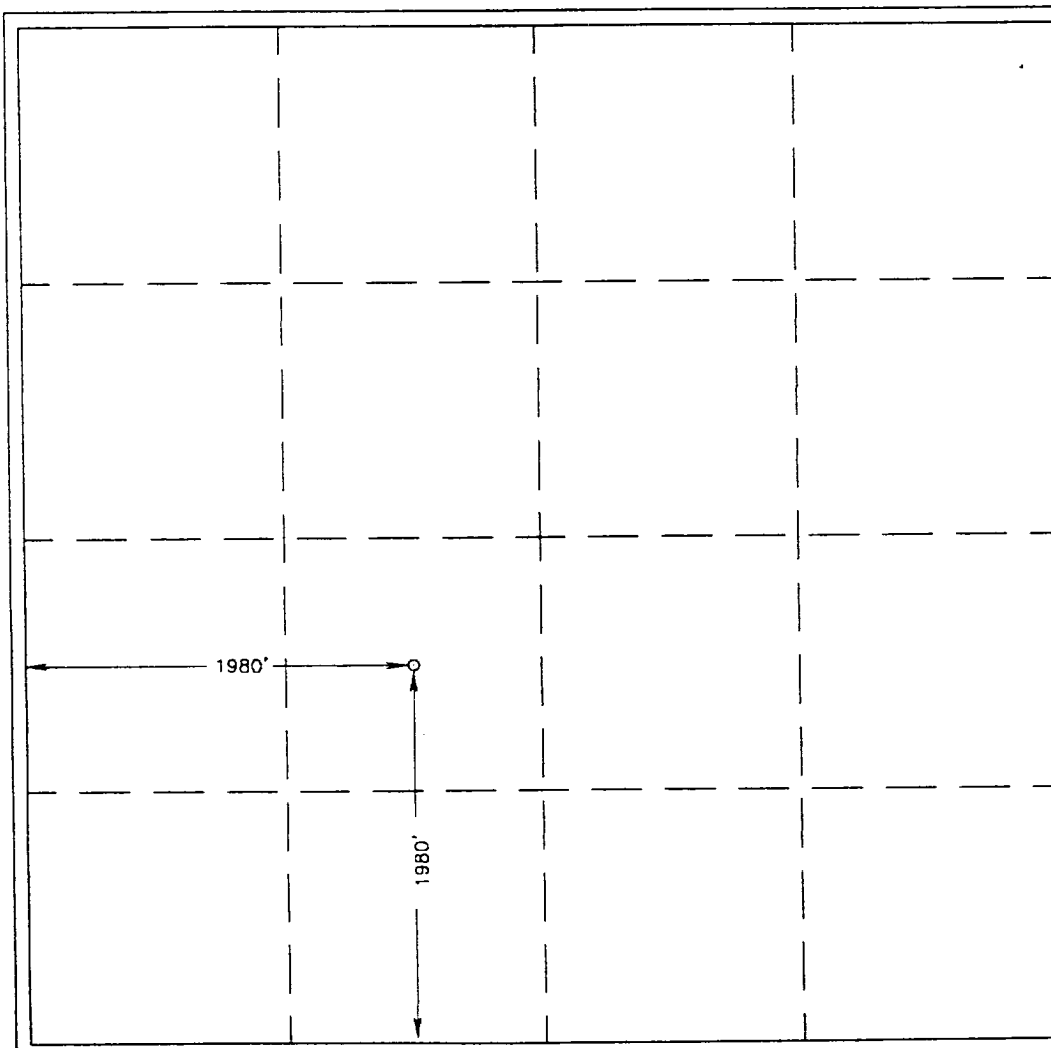
UL or lot No.	Section	Township	Range	Lot Idn	Feet from the	North/South line	Feet from the	East/West line	County
K	14	19-S	38-E		1980	SOUTH	1980	WEST	LEA

Bottom Hole Location If Different From Surface

UL or lot No.	Section	Township	Range	Lot Idn	Feet from the	North/South line	Feet from the	East/West line	County

Dedicated Acres	Joint or Infill	Consolidation Code	Order No.
40			

NO ALLOWABLE WILL BE ASSIGNED TO THIS COMPLETION UNTIL ALL INTERESTS HAVE BEEN CONSOLIDATED
OR A NON-STANDARD UNIT HAS BEEN APPROVED BY THE DIVISION



OPERATOR CERTIFICATION

I hereby certify the the information
contained herein is true and complete to the
best of my knowledge and belief.

R.C. Barnett
Signature

R. C. Barnett
Printed Name

President
Title

08/10/01
Date

SURVEYOR CERTIFICATION

I hereby certify that the well location shown
on this plat was plotted from field notes of
actual surveys made by me or under my
supervision, and that the same is true and
correct to the best of my belief.

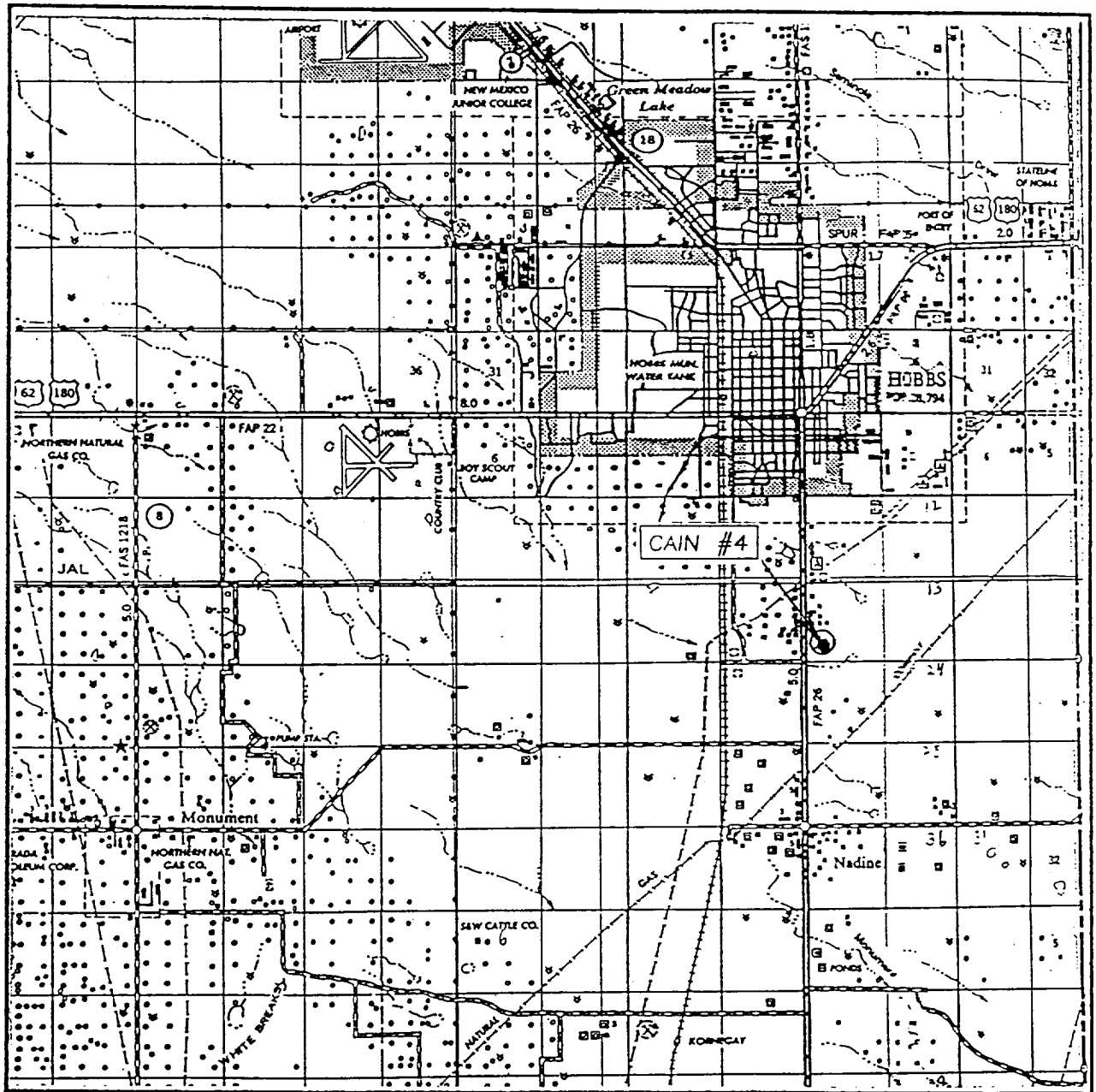
JULY 31, 2001

Date Surveyed
Signature & Seal of
Professional Surveyor

Gary Eidson 8/1/01
01.11.0902

Certificate No. RONALD J. EIDSON 3239
GARY EIDSON 12641

VICINITY MAP



SCALE: 1" = 2 MILES

SEC. 14 TWP. 19-S RGE. 38-E

SURVEY N.M.P.M.

COUNTY LEA

DESCRIPTION 1980' FSL & 1980' FWL

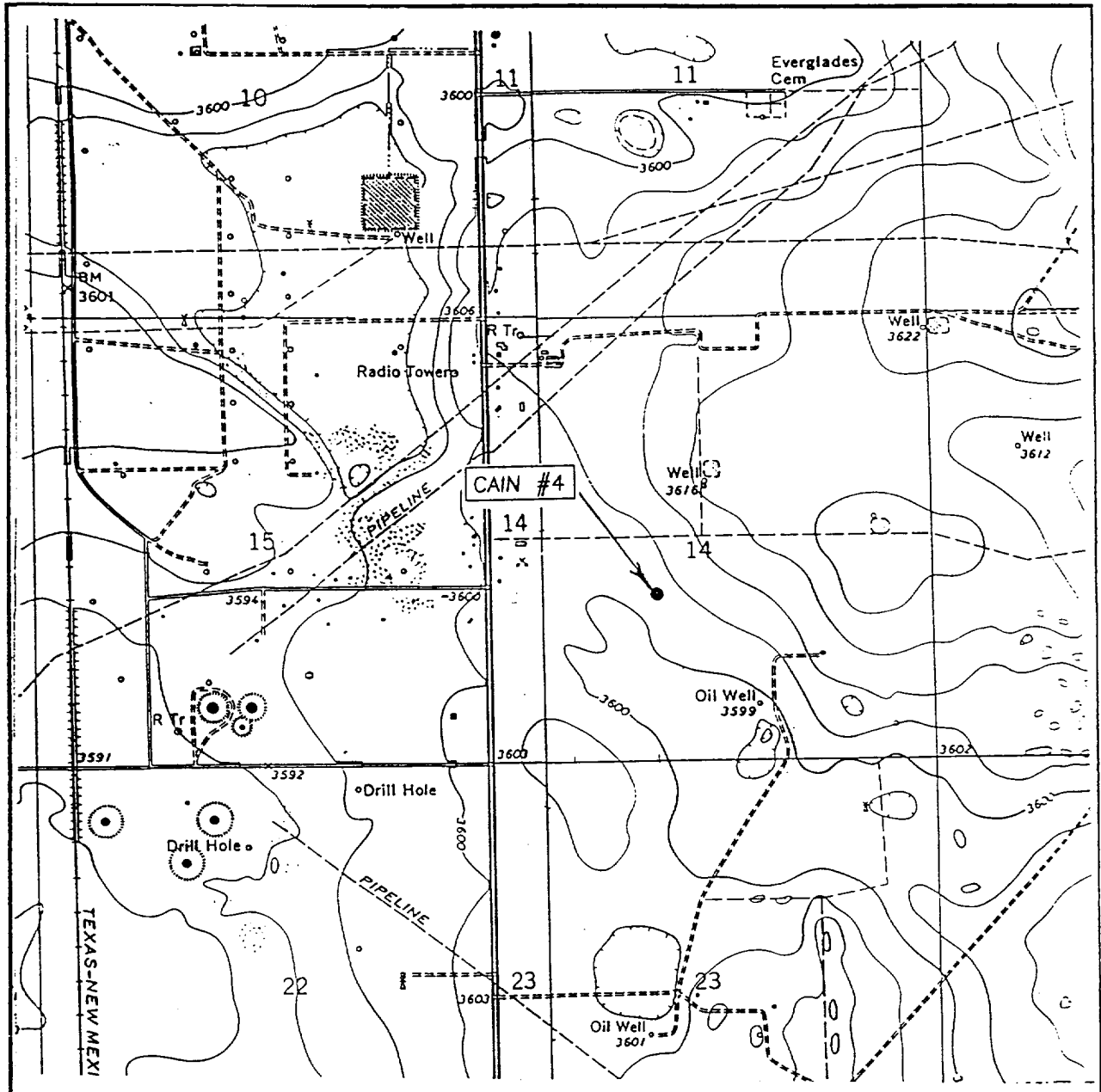
ELEVATION 3602

OPERATOR XERIC OIL & GAS CORPORATION

LEASE CAIN

JOHN WEST SURVEYING
HOBBS, NEW MEXICO
(505) 393-3117

LOCATION VERIFICATION MAP



SCALE: 1" = 2000'

CONTOUR INTERVAL: 5'
HOBBS WEST, N.M.

SEC. 14 TWP. 19-S RGE. 38-E

SURVEY N.M.P.M.

COUNTY LEA

DESCRIPTION 1980' FSL & 1980' FWL

ELEVATION 3602'

OPERATOR XERIC OIL & GAS CORPORATION

LEASE CAIN

U.S.G.S. TOPOGRAPHIC MAP

HOBBS WEST, N.M.

JOHN WEST SURVEYING
HOBBS, NEW MEXICO
(505) 393-3117