

District I
PO Box 1980 Hobbs, NM 88241-1980

District II
811 South First, Artesia, NM 88210

District III
1000 Rio Brazos Rd., Aztec, NM 87410

District IV
2040 South Pacheco, Santa Fe, NM 87505

State of New Mexico
Energy, Minerals & Natural Resources Department

OIL CONSERVATION DIVISION
2040 South Pacheco
Santa Fe, NM 87505

Form C-101
Revised October 18, 1994
Instructions on back
Submit to Appropriate District Office
State Lease - 6 Copies
Fee Lease - 5 Copies

☐ AMENDED REPORT

APPLICATION FOR PERMIT TO DRILL, RE-ENTER, DEEPEN, PLUGBACK, OR ADD A ZONE

| | | |
|---|---------------------------------|--------------------------------------|
| Operator Name and Address Nearburg Producing Company 3300 N A St., Bldg 2, Suite 120 Midland, TX 79705 | | OGRID Number 015742 |
| | | API Number 30 - 0 25-35712 |
| Property Code 27886 | Property Name Simms 35 State | Well No. 4 |

Surface Location

| UL or lot no. | Section | Township | Range | Lot Idn | Feet from the | North/South line | Feet from the | East/West Line | County |
|---------------|---------|----------|-------|---------|---------------|------------------|---------------|----------------|--------|
| F | 35 | 20S | 35E | | 1980 | North | 1650 | West | Lea |

Proposed Bottom Hole Location If Different From Surface

| UL or lot no. | Section | Township | Range | Lot Idn | Feet from the | North/South line | Feet from the | East/West Line | County |
|---|---------|----------|-------|---------|-----------------|------------------|---------------|----------------|--------|
| Proposed Pool 1 Osudo Morrow, West (82240) | | | | | Proposed Pool 2 | | | | |

| | | | | |
|---------------------|-------------------------|---------------------|--------------------------------------|--------------------------------|
| Work Type Code N | Well Type Code G | Cable/Rotary R | Lease Type Code S | Ground Level Elevation 3699 |
| Multiple No | Proposed Depth 13500 | Formation Morrow | Contractor Patterson Drilling Co. | Spud Date 10-15-01 |

Proposed Casing and Cement Program

| Hole Size | Casing Size | Casing weight/foot | Setting Depth | Sacks of Cement | Estimated TOC |
|-----------|-------------|--------------------|---------------|-----------------|-----------------|
| 17-1/2" | 13-3/8" | 48# | 1350' | 400 sxs | Circ to surface |
| 12-1/4" | 9-5/8" | 36# & 40# | 5600' | 1500 sxs | Circ to surface |
| 8-3/4" | 7" | 26# & 29# | 11,800' | 500 sxs | Tie back |
| 6-1/8" | 4-1/2" | 13.50# | 13,500' | 500 sxs | Tie back to 7" |

Describe the proposed program. If this application is to DEEPEN or PLUG BACK give the data on the present productive zone and proposed new productive zone. Describe the blowout prevention program, if any. Use additional sheets if necessary.

Propose to drill the well to a sufficient depth to evaluate the Morrow formation. After reaching TD, logs will be run and casing set if the evaluation is positive. Perforate, test and stimulate as necessary to establish production.

Acreage dedication is 320 acres; N/2 of Section 35.

Permit Expires 1 Year From Approval
Date Unless Drilling Underway

I hereby certify that the information given above is true and complete to the best of my knowledge and belief.

Signature:

Printed name: Kim Stewart

Title: Regulatory Analyst

Date: 09-21-01

Phone: 915/686-8235

OIL CONSERVATION DIVISION

Approved By:

Title:

Approval Date:

Expiration Date:

Conditions of Approval:

Attached: ☐

State of New Mexico

Energy, Minerals and Natural Resources Department

DISTRICT I

P.O. Box 1980, Hobbs, NM 88241-1980

DISTRICT II

P.O. Drawer DD, Artesia, NM 88211-0719

DISTRICT III

1000 Rio Brazos Rd., Artec, NM 87410

DISTRICT IV

P.O. Box 2088, Santa Fe, N.M. 87504-2088

OIL CONSERVATION DIVISION

P.O. Box 2088
Santa Fe, New Mexico 87504-2088

Form C-102
Revised February 10, 1994
Submit to Appropriate District Office
State Lease - 4 Copies
Fee Lease - 3 Copies

WELL LOCATION AND ACREAGE DEDICATION PLAT

☐ AMENDED REPORT

| | | | |
|-----------------------------------|--|---------------------------|--|
| API Number 30-025-35712 | | Pool Code 82240 | Pool Name Osudo Morrow, West |
| Property Code 27886 | Property Name SIMS 35 STATE | | Well Number 4 |
| OGRID No. 015742 | Operator Name NEARBURG PRODUCING CO. | | Elevation 3699' |

Surface Location

| UL or lot No. | Section | Township | Range | Lot Idn | Feet from the | North/South line | Feet from the | East/West line | County |
|---------------|-----------|-------------|-------------|---------|---------------|------------------|---------------|----------------|------------|
| F | 35 | 20-S | 35-E | | 1980 | NORTH | 1650 | WEST | LEA |

Bottom Hole Location If Different From Surface

| UL or lot No. | Section | Township | Range | Lot Idn | Feet from the | North/South line | Feet from the | East/West line | County |
|-------------------------------|-----------------------------|--------------------|-----------|---------|---------------|------------------|---------------|----------------|--------|
| | | | | | | | | | |
| Dedicated Acres 320 | Joint or Infill N | Consolidation Code | Order No. | | | | | | |

NO ALLOWABLE WILL BE ASSIGNED TO THIS COMPLETION UNTIL ALL INTERESTS HAVE BEEN CONSOLIDATED
OR A NON-STANDARD UNIT HAS BEEN APPROVED BY THE DIVISION

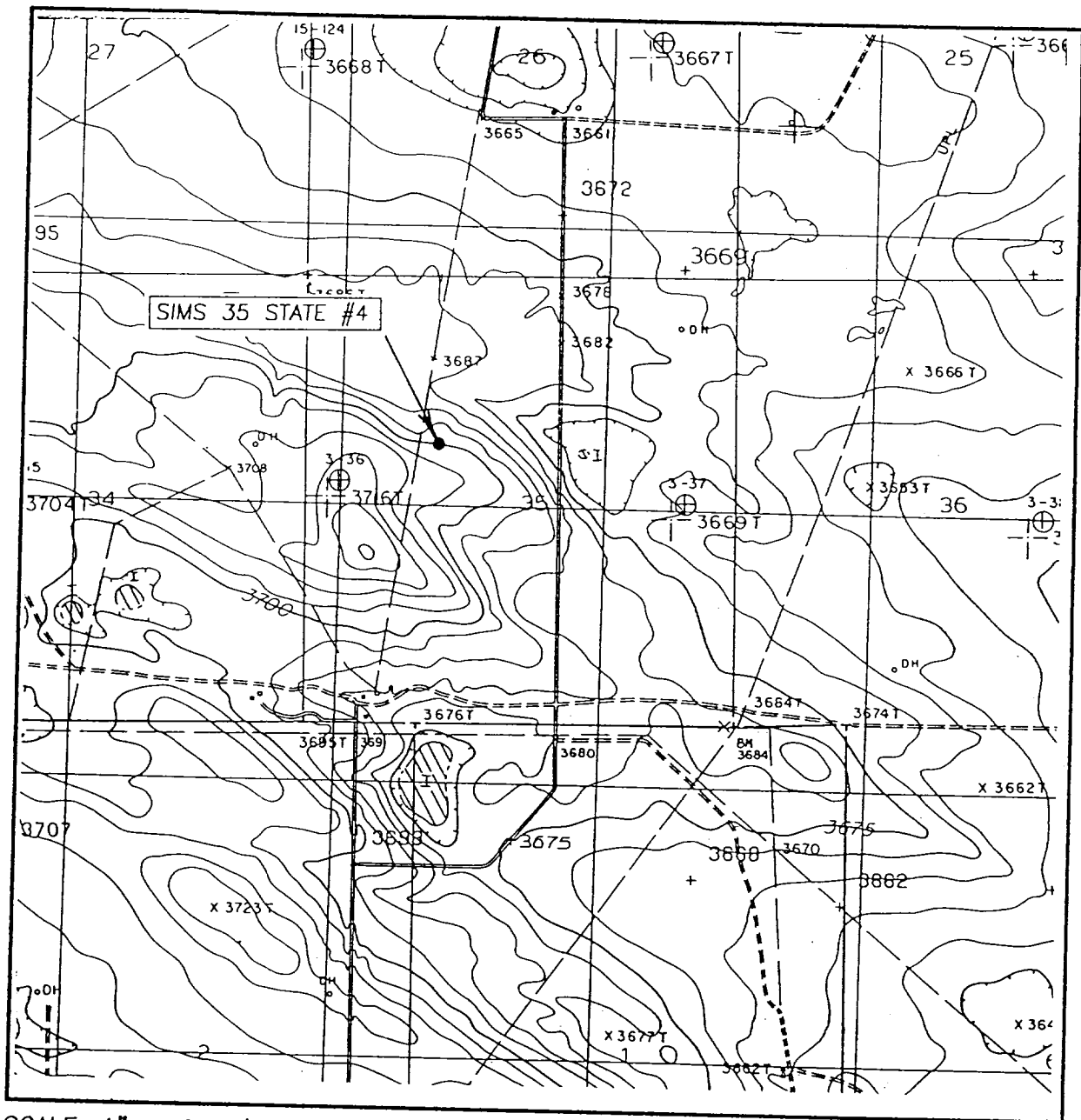
| | | |
|--|--|--|
| | OPERATOR CERTIFICATION I hereby certify the the information contained herein is true and complete to the best of my knowledge and belief. Signature: <u>Kim Stewart</u> Printed Name: <u>Kim Stewart</u> Title: <u>Regulatory Analyst</u> Date: <u>September 21, 2001</u> | |
| | SURVEYOR CERTIFICATION I hereby certify that the well location shown on this plat was plotted from field notes of actual surveys made by me or under my supervision, and that the same is true and correct to the best of my belief. Date Surveyed: <u>SEPTEMBER 13, 2001</u> Signature: <u>[Signature]</u> AWB Professional Surveyor State of New Mexico Certificate No. <u>RONALD E. EDSON 3239</u> 12641 | |



OPERATOR NEARBURG PRODUCING COMPANY
LEASE SIMS 35 STATE

JOHN WEST SURVEYING
HOBBS, NEW MEXICO
(505) 393-3117

LOCATION VERIFICATION MAP



SCALE: 1" = 2000'

CONTOUR INTERVAL: 5'
MOUNMENT SW, N.M.

SEC. 35 TWP. 20-S RGE. 35-E

SURVEY N.M.P.M.

COUNTY LEA

DESCRIPTION 1980' FNL & 1650' FWL

ELEVATION 3699'

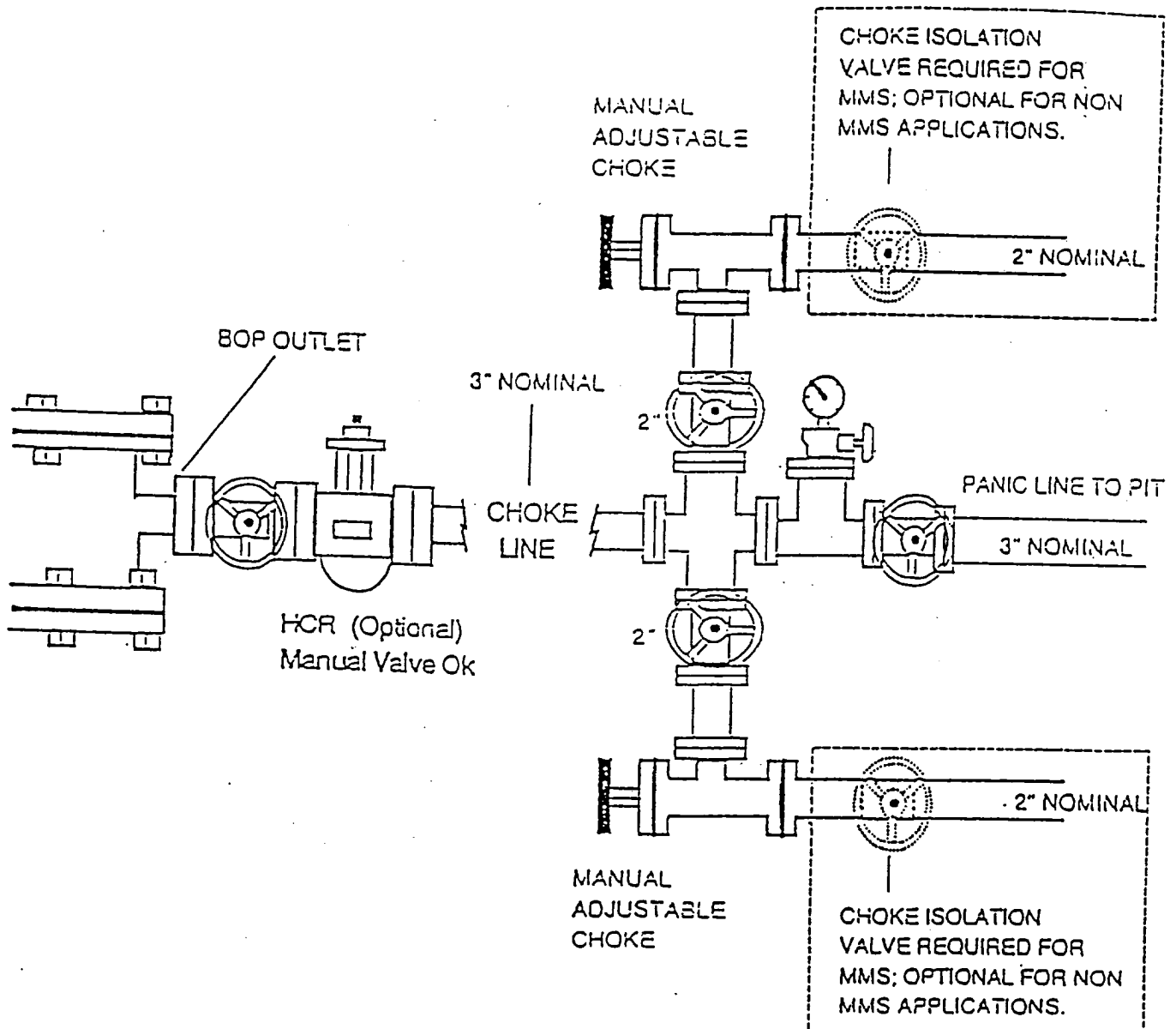
OPERATOR NEARBURG PRODUCING COMPANY

LEASE SIMS 35 STATE

U.S.G.S. TOPOGRAPHIC MAP
MOUNMENT SW, N.M.

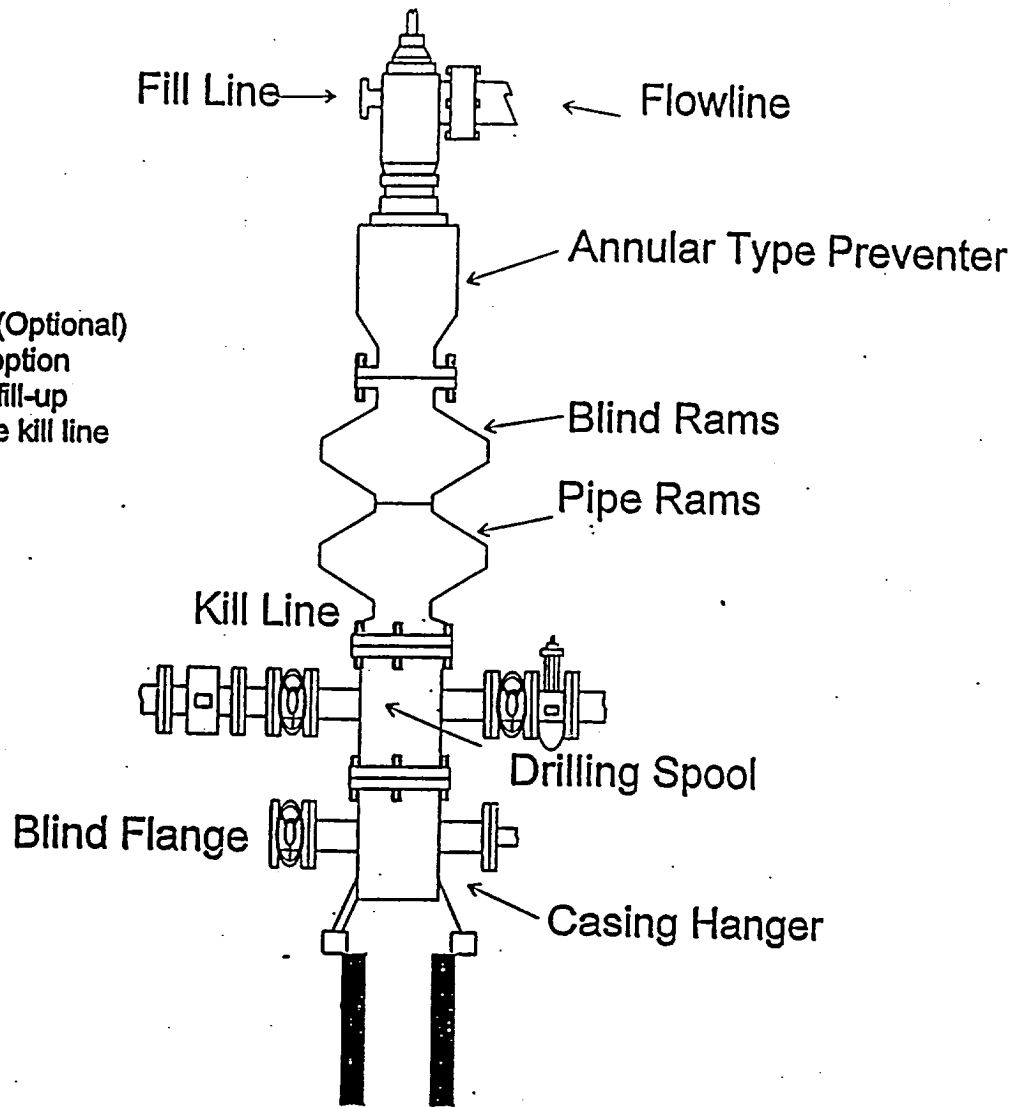
JOHN WEST SURVEYING
HOBBS, NEW MEXICO
(505) 393-3117

NEARBURG PRODUCING COMPANY
CHOKE MANIFOLD
2M AND 3M SERVICE



ABOVE DATE DOES NOT
INDICATE WHEN
CONFIDENTIAL LOGS
WILL BE RELEASED

NEARBURG PRODUCING COMPANY
BOPE SCHEMATIC



Rotating Head (Optional)
Drilling Nipple option
must include a fill-up
line. Do not use kill line
for fill up.

1500 Series

ABOVE DATE DOES NOT
INDICATE WHEN
CONFIDENTIAL LOGS
WILL BE RELEASED

ELF

5/10/92