

District I
1625 N. French Dr., Hobbs, NM 88240
District II
1301 W. Grand Avenue, Artesia, NM 88210
District III
1000 Rio Brazos Road, Aztec, NM 87410
District IV
1220 S. St. Francis Dr., Santa Fe, NM 87505

State of New Mexico
Energy Minerals and Natural Resources

Oil Conservation Division
1220 South St. Francis Dr.
Santa Fe, NM 87505

Form C-101
Revised March 17, 1999

Submit to appropriate District Office
State Lease - 6 Copies
Fee Lease - 5 Copies

☐ AMENDED REPORT

APPLICATION FOR PERMIT TO DRILL, RE-ENTER, DEEPEN, PLUGBACK, OR ADD A ZONE

¹ Operator Name and Address Matador Operating Company 8340 Meadow Road #150 Dallas, TX 75231		² OGRID Number 14245
		³ API Number 30 - 025-35891
³ Property Code 25471	⁵ Property Name Laughlin	⁶ Well No. 7

⁷ Surface Location

UL or lot no.	Section	Township	Range	Lot Idn	Feet from the	North/South line	Feet from the	East/West line	County
K	4	20S	37E		1650	South	1875	West	Lea

⁸ Proposed Bottom Hole Location If Different From Surface

UL or lot no.	Section	Township	Range	Lot Idn	Feet from the	North/South line	Feet from the	East/West line	County
⁹ Proposed Pool 1 Monument; Tubb					¹⁰ Proposed Pool 2				

¹¹ Work Type Code N	¹² Well Type Code O	¹³ Cable/Rotary Rotary	¹⁴ Lease Type Code P	¹⁵ Ground Level Elevation 3603'
¹⁶ Multiple No	¹⁷ Proposed Depth 6800'	¹⁸ Formation Tubb	¹⁹ Contractor Patterson	²⁰ Spud Date 4/25/02

²¹ Proposed Casing and Cement Program

Hole Size	Casing Size	Casing weight/foot	Setting Depth	Sacks of Cement	Estimated TOC
12-1/4"	8-5/8"	24#	1350'	600	Surface
7-7/8"	4-1/2"	11.6#	6800'	750	2000'

²² Describe the proposed program. If this application is to DEEPEN or PLUG BACK, give the data on the present productive zone and proposed new productive zone.
Describe the blowout prevention program, if any. Use additional sheets if necessary.

Drill 12-1/4" hole to top of Anhydrite @ 1350'. Run and cement to surface 8-5/8" casing. Nipple up 11" 3M BOP assembly and test to 3000 psi. Drill 7-7/8" hole to 6800'. Evaluate to run production casing.

Permit Expires 1 Year From Approval
Date Unless Drilling Underway

²³ I hereby certify that the information given above is true and complete to the best of my knowledge and belief.

Signature:

Printed name: Jim Kramer

Title: Sr. Drilling Engineer

Date: 4/10/02

Phone:
214 987-7128

OIL CONSERVATION DIVISION
ORIGINAL SIGNED BY
PAUL F. KAUTZ
PETROLEUM ENGINEER

Approved by:

Title: APR 15 2002

Approval Date:

Expiration Date:

Conditions of Approval:

Attached ☐

DISTRICT I
P. O. Box 1980
Hobbs, NM 88241-1980

State of New Mexico
Energy, Minerals, and Natural Resources Department

Form C-102
Revised 02-10-94

Instructions on back

DISTRICT II
P. O. Drawer DD
Artesia, NM 88211-0719

OIL CONSERVATION DIVISION

P. O. Box 2088
Santa Fe, New Mexico 87504-2088

Submit to the Appropriate
District Office
State Lease - 4 copies
Fee Lease - 3 copies

☐ AMENDED REPORT

DISTRICT III
1000 Rio Brazos Rd.
Aztec, NM 87410

DISTRICT IV
P. O. Box 2088
Santa Fe, NM 87507-2088

WELL LOCATION AND ACREAGE DEDICATION PLAT

¹ API Number 30-025-35891	² Pool Code 47090	³ Pool Name Monument; Tubb
⁴ Property Code 25471	⁵ Property Name LAUGHLIN	⁶ Well Number 7
⁷ OGRID No. 14245	⁸ Operator Name MATADOR OPERATING COMPANY	⁹ Elevation 3603'

¹⁰ SURFACE LOCATION

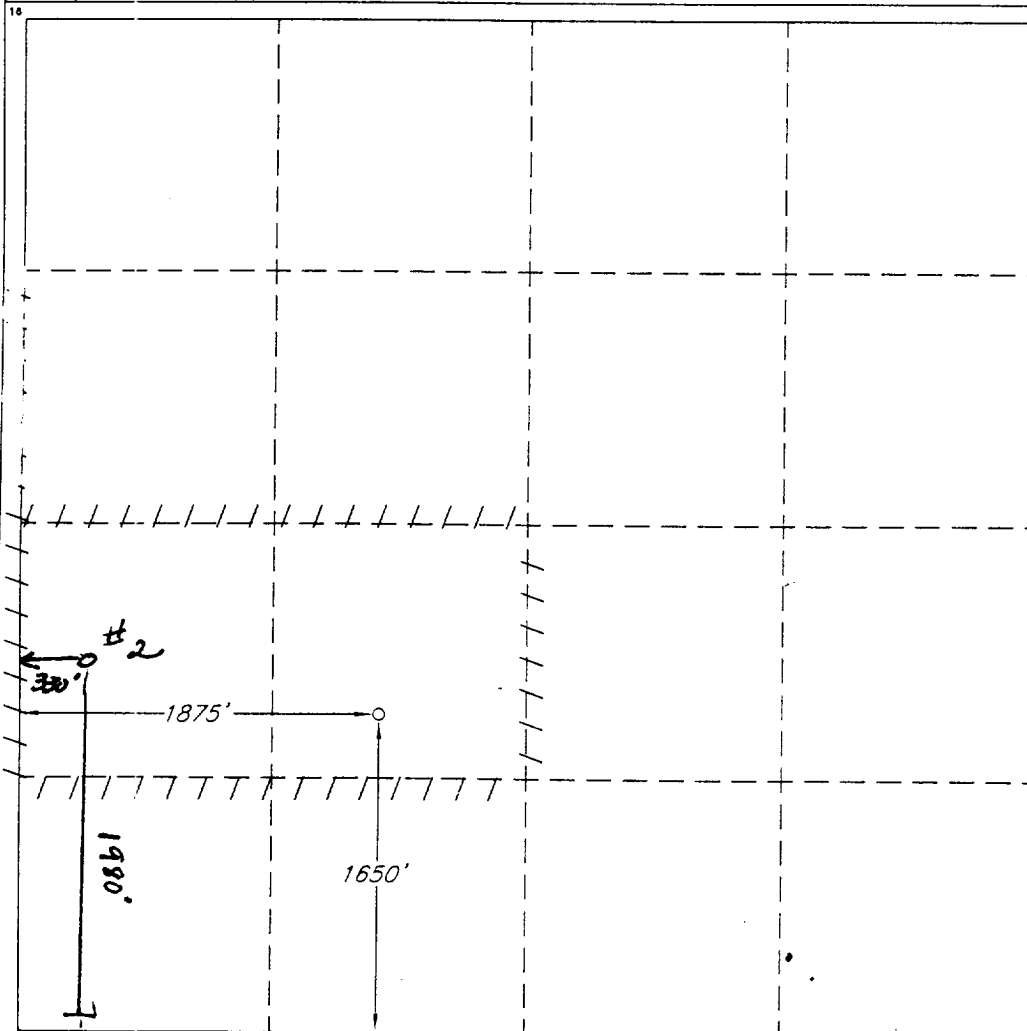
UL or lot no.	Section	Township	Range	Lot Ida	Feet from the	North/South line	Feet from the	East/West line	County
K	4	20 SOUTH	37 EAST, N.M.P.M.		1650'	SOUTH	1875'	WEST	LEA

¹¹ "BOTTOM HOLE LOCATION IF DIFFERENT FROM SURFACE

UL or lot no.	Section	Township	Range	Lot Ida	Feet from the	North/South line	Feet from the	East/West line	County

¹² Dedicated Acres 80	¹³ Joint or Infill	¹⁴ Consolidation Code	¹⁵ Order No.
-------------------------------------	-------------------------------	----------------------------------	-------------------------

NO ALLOWABLE WELL BE ASSIGNED TO THIS COMPLETION UNTIL ALL INTERESTS HAVE BEEN
CONSOLIDATED OR A NON-STANDARD UNIT HAS BEEN APPROVED BY THE DIVISION



OPERATOR CERTIFICATION

I hereby certify that the information
contained herein is true and complete
to the best of my knowledge and belief.

Signature

Printed Name

Jim Kramer

Title

Sr. Drilling Engineer

Date

2/21/02

SURVEYOR CERTIFICATION

I hereby certify that the well
location shown on this plat was
plotted from field notes of actual
surveys made by me or under
my supervision, and that the
same is true and correct to the
best of my belief.

Date of Survey

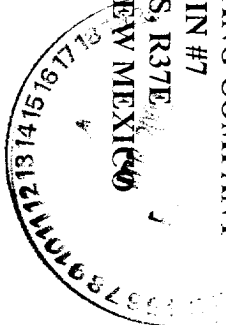
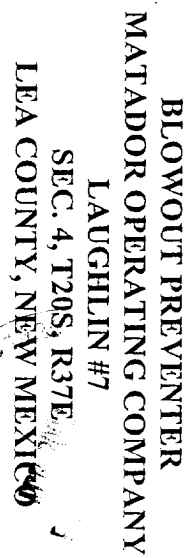
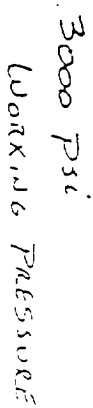
MARCH 27, 2002

Signature and Seal of
Professional Surveyor

Certificate No.

V. L. BEZNER R.P.S. #7920

JOB # 81070 / 71 SE / J.C.P.



ABOVE DATE DOES NOT
INDICATE WHEN
CONFIDENTIAL LOGS
WILL BE RELEASED

ELF

10/9/02