

District I  
1625 N. French Dr., Hobbs, NM 88240  
District II  
1301 W. Grand Avenue, Artesia, NM 88210  
District III  
1000 Rio Brazos Road, Aztec, NM 87410  
District IV  
1220 S. St. Francis Dr., Santa Fe, NM 87505

State of New Mexico  
Energy Minerals and Natural Resources

Form C-101  
Revised March 17, 1999

Oil Conservation Division  
1220 South St. Francis Dr.  
Santa Fe, NM 87505

Submit to appropriate District Office  
State Lease - 6 Copies  
Fee Lease - 5 Copies

☐ AMENDED REPORT

APPLICATION FOR PERMIT TO DRILL, RE-ENTER, DEEPEN, PLUGBACK, OR ADD A ZONE

<sup>1</sup> Operator Name and Address Chesapeake Operating, Inc. P. O. Box 18496 Okla. City, OK 73154-0496		<sup>2</sup> OGRID Number 147179
<sup>3</sup> Property Code 30422	<sup>4</sup> Property Name West Teas Unit	<sup>5</sup> API Number 30-025-35976
		<sup>6</sup> Well No. 443

<sup>7</sup> Surface Location									
UL or lot no. 11	Section 4	Township 20S	Range 33E	Lot Idn	Feet from the 1650	North/South line South	Feet from the 660	East/West line East	County Lea

<sup>8</sup> Proposed Bottom Hole Location If Different From Surface									
UL or lot no.	Section	Township	Range	Lot Idn	Feet from the	North/South line	Feet from the	East/West line	County

<sup>9</sup> Proposed Pool 1 Teas Yates Seven Rivers West					<sup>10</sup> Proposed Pool 2				
--	--	--	--	--	-------------------------------	--	--	--	--

<sup>11</sup> Work Type Code N	<sup>12</sup> Well Type Code Oil/Gas	<sup>13</sup> Cable/Rotary R	<sup>14</sup> Lease Type Code S	<sup>15</sup> Ground Level Elevation 3557'
<sup>16</sup> Multiple N	<sup>17</sup> Proposed Depth 3500'	<sup>18</sup> Formation Seven Rivers	<sup>19</sup> Contractor Rod Ric Drilling #2	<sup>20</sup> Spud Date 06/15/02

<sup>21</sup> Proposed Casing and Cement Program					
Hole Size	Casing Size	Casing weight/foot	Setting Depth	Sacks of Cement	Estimated TOC
11"	8-5/8"	32#	0-1360'	± 400	Surface
7-7/8"	5-1/2"	15.5#	0-3500'	± 700	400'

<sup>22</sup> Describe the proposed program. If this application is to DEEPEN or PLUG BACK, give the data on the present productive zone and proposed new productive zone.  
Describe the blowout prevention program, if any. Use additional sheets if necessary.

Chesapeake proposes to drill to a total depth of 3500' in the Seven Rivers Formation with Rod Ric Drilling #2 as the drilling contractor. Permit Expires 1 Year From Approval Date Unless Drilling Underway  
BOP consists of 11" 3M# Annular (See schematic)

<sup>23</sup> I hereby certify that the information given above is true and complete to the best of my knowledge and belief.

Signature: *Barbara J. Bale*

Printed name: Barbara J. Bale

Title: Regulatory Analyst

Date: 04/23/02

Phone: (405)848-8000

OIL CONSERVATION DIVISION

Approved by: ORIGINAL SIGNED BY

CHRIS WILLIAMS

OC DISTRICT SUPERVISOR/GENERAL MANAGER

Approval Date:

Expiration Date:

Conditions of Approval:

Attached ☐ AUG 26 2002

Permit Expires 1 Year From Approval  
Date Unless Drilling Underway

DISTRICT I  
P.O. Box 1980, Hobbs, NM 88241-1980

State of New Mexico  
Energy, Minerals and Natural Resources Department

Form C-102  
Revised February 10, 1984  
Submit to Appropriate District Office  
State Lease - 4 Copies  
Fee Lease - 3 Copies

DISTRICT II  
P.O. Drawer DD, Artesia, NM 88211-0719

DISTRICT III  
1000 Rio Brazos Rd., Aztec, NM 87410

DISTRICT IV  
P.O. BOX 2088, SANTA FE, N.M. 87504-2088

OIL CONSERVATION DIVISION

P.O. Box 2088  
Santa Fe, New Mexico 87504-2088

☐ AMENDED REPORT

WELL LOCATION AND ACREAGE DEDICATION PLAT

API Number <b>30-025-35976</b>	Pool Code <b>59110</b>	Pool Name <b>Teas Yates Seven Rivers West</b>
Property Code <b>30422</b>	<b>West Teas Unit</b>	Well Number <b>443</b>
OGRID No. <b>147179</b>	Operator Name <b>CHESAPEAKE OPERATING INC</b>	Elevation <b>3557</b>

Surface Location

UL or lot No. <b>1</b>	Section <b>4</b>	Township <b>20 S</b>	Range <b>33 E</b>	Lot Idn	Feet from the <b>1650</b>	North/South line <b>SOUTH</b>	Feet from the <b>660</b>	East/West line <b>EAST</b>	County <b>LEA</b>
---------------------------	---------------------	-------------------------	----------------------	---------	------------------------------	----------------------------------	-----------------------------	-------------------------------	----------------------

Bottom Hole Location If Different From Surface

UL or lot No.	Section	Township	Range	Lot Idn	Feet from the	North/South line	Feet from the	East/West line	County
Dedicated Acres <b>40</b>	Joint or Infill	Consolidation Code	Order No.						

NO ALLOWABLE WILL BE ASSIGNED TO THIS COMPLETION UNTIL ALL INTERESTS HAVE BEEN CONSOLIDATED  
OR A NON-STANDARD UNIT HAS BEEN APPROVED BY THE DIVISION

<p>GEODETIC COORDINATES NAD 27 NME Y=582391.2 X=706935.1 LAT 32°35'57.48"N LONG. 103°39'41.00"W</p>				<p>660'</p>	
				<p>1650'</p>	

OPERATOR CERTIFICATION

I hereby certify the the information contained herein is true and complete to the best of my knowledge and belief.

*Barbara J. Bale*  
Signature  
Barbara J. Bale  
Printed Name  
Regulatory Analyst  
Title  
04/23/02  
Date

SURVEYOR CERTIFICATION

I hereby certify that the well location shown on this plat was plotted from field notes of actual surveys made by me or under my supervision, and that the same is true and correct to the best of my belief.

APR 10 2002  
Date Surveyed  
Signature & Seal of Professional Surveyor  
4/06/02  
02-11-0272  
Certificate No. RONALD J. EIDSON 3239  
GARY EIDSON 12641

E: 1" = 2 MILES

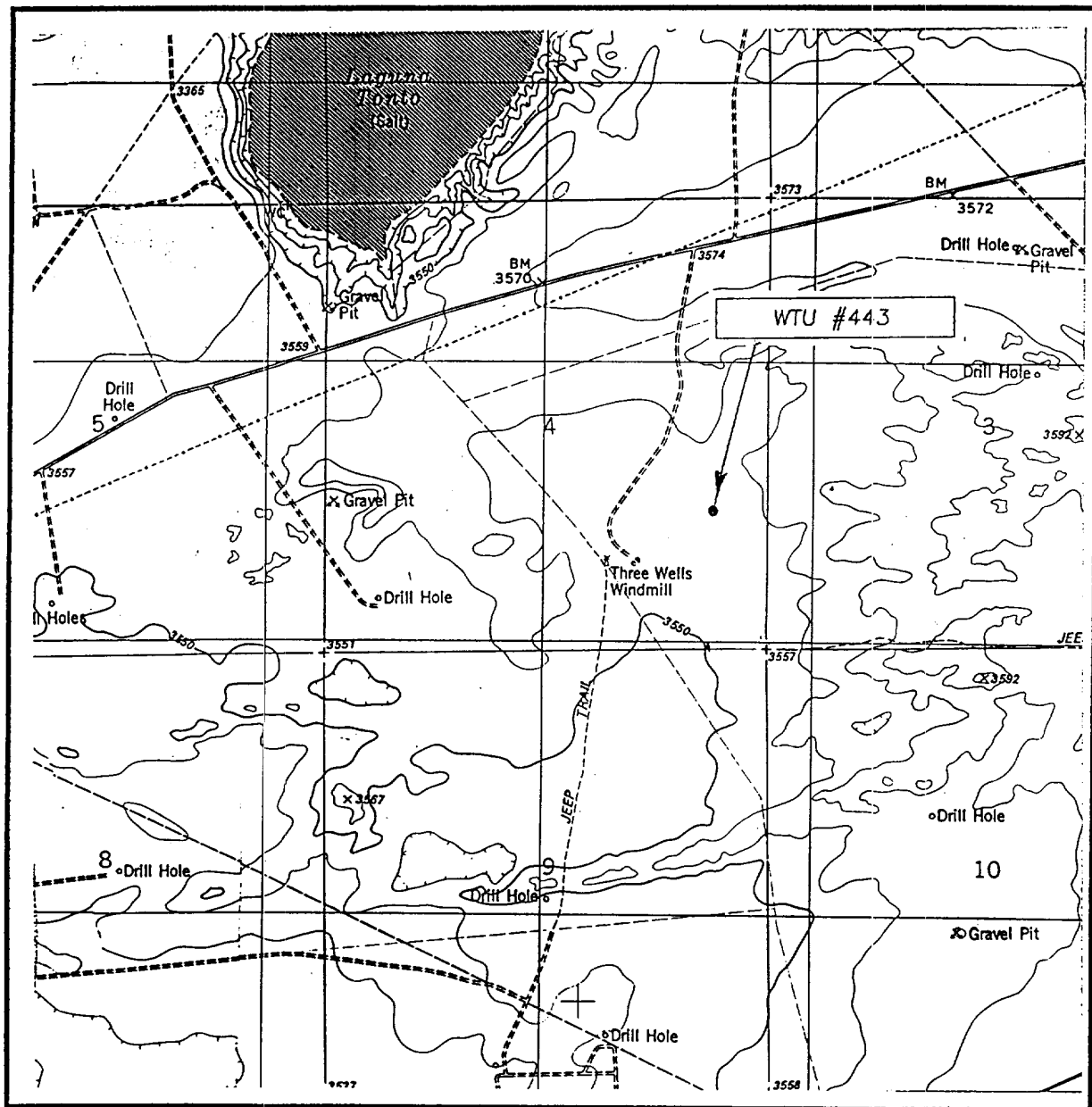
RECEIVED  
FEB 20 1965  
HUGO  
GOD

SURVEYING

LEASE WTU #443

JOHN WEST SURVEYING  
HOBBS, NEW MEXICO  
(505) 393-3117

# LOCATION VERIFICATION MAP



SCALE: 1" = 2000'

CONTOUR INTERVAL: 10'

SEC. 4 TWP. 20-S RGE. 33-E

LAGUNA GATUNA

SURVEY N.M.P.M.

COUNTY LEA

DESCRIPTION 1650' FSL & 660' FEL

ELEVATION 3557'

OPERATOR CHESAPEAKE OPERATING INC.

LEASE WTU #443

U.S.G.S. TOPOGRAPHIC MAP

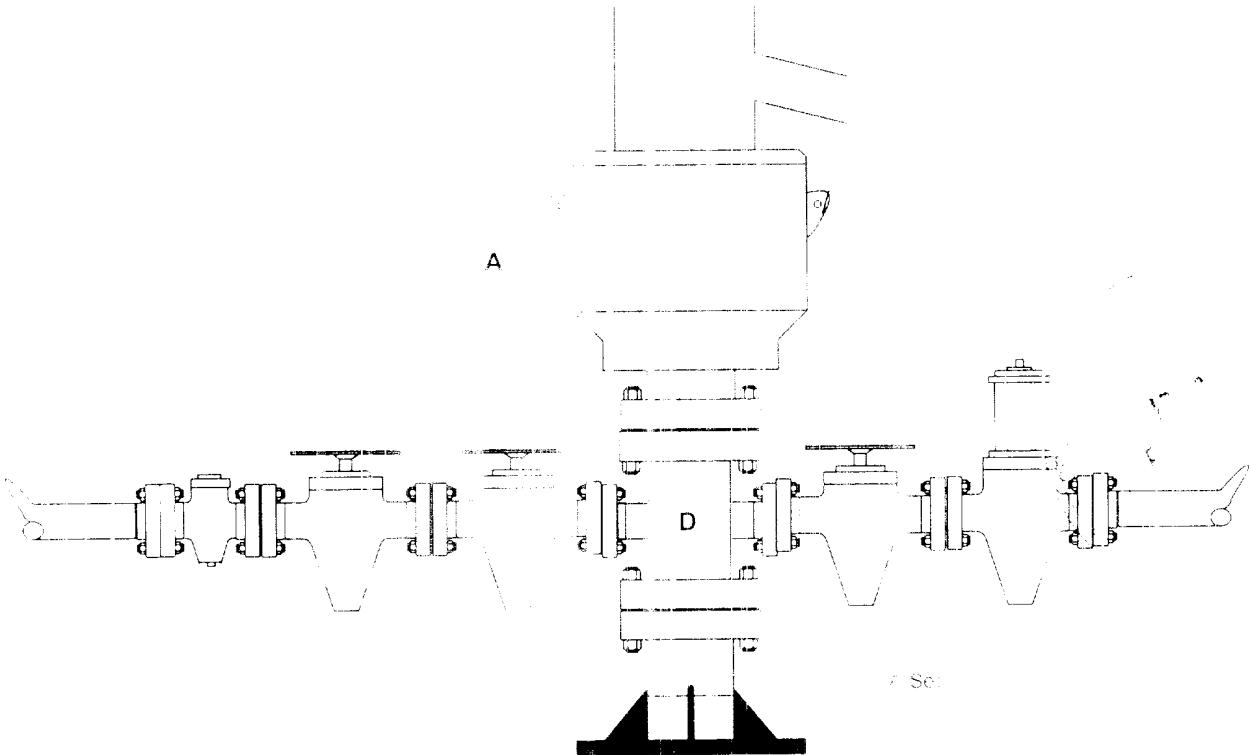
LAGUNA GATUNA

JOHN WEST SURVEYING  
HOBBS, NEW MEXICO  
(505) 393-3117

BLOW OUT PREVENTOR SCH. 40  
CHESAPEAKE OPERATING INC

WELL : WTU 443  
FIELD :  
RIG : Rod Ric #2  
COUNTY : Lea STATE: New Mexico  
OPERATION: Drill out below 8 5/8" Casing

SIZE	PRESSURE	DESCRIPTION
A	1"	3,000# Annular
D	1"	3,000# Mud Cross
Spoor		
A Sec	8-5/8" SOW x 11" 3M	



Kill Line

Choke Line

SIZE PRESSURE DESCRIPTION

SIZE PRESSURE DESCRIPTION