

DISTRICT I
P.O. Box 1980, Hobbs, NM 88241-1980

DISTRICT II
P.O. Box Drawer DD, Artesia, NM 88211-0719

DISTRICT III
1000 Rio Brazos Rd., Aztec, NM 87410

DISTRICT IV
P.O. Box 2088, Santa Fe, NM 87504-2088

State of New Mexico
Energy, Minerals and Natural Resources Departn.

OIL CONSERVATION DIVISION

P.O. Box 2088
Santa Fe, New Mexico 87504-2088

Form C-101

Revised February 10, 1994

Instructions on back

Submit to Appropriate District Office

State Lease - 6 Copies

Fee Lease - 5 Copies

☐ AMENDED REPORT

APPLICATION FOR PERMIT TO DRILL, RE-ENTER, DEEPEN, PLUGBACK, OR ADD A ZONE

¹ Operator Name and Address TEXACO EXPLORATION & PRODUCTION INC. 205 E. Bender, HOBBS, NM 88240		² OGRID Number 022351
⁴ Property Code 11130	⁵ Property Name WEIR, C. H. -A-	³ API Number 30 025 06073
		⁶ Well No. 7

⁷ Surface Location									
UI or lot no.	Section	Township	Range	Lot.Idn	Feet From The	North/South Line	Feet From The	East/West Line	County
L	12	20S	37E		1985	SOUTH	660	WEST	LEA

⁸ Proposed Bottom Hole Location If Different From Surface									
UI or lot no.	Section	Township	Range	Lot.Idn	Feet From The	North/South Line	Feet From The	East/West Line	County
⁹ Proposed Pool 1 WEIR BLINEBRY, EAST					¹⁰ Proposed Pool 2				

¹¹ Work Type Code A	¹² WellType Code O	¹³ Rotary or C.T. R	¹⁴ Lease Type Code S	¹⁵ Ground Level Elevation 3578' DF
¹⁶ Multiple No	¹⁷ Proposed Depth 5896'	¹⁸ Formation BLINEBRY	¹⁹ Contractor PRIDE	²⁰ Spud Date 7/24/96

²¹ Proposed Casing and Cement Program					
SIZE OF HOLE	SIZE OF CASING	WEIGHT PER FOOT	SETTING DEPTH	SACKS OF CEMENT	EST. TOP
15"	10-3/4" H-40	32-3/4#	1399'	950	
9-5/8"	7-5/8" H-40	24#	5474'	2400	TOP @ 800'
6-3/4"	5-1/2" J-55	15-1/2#	5419-6899'	200	ORIG LINER
			0-5419'	600	TIEBACK RUN
					FEB. 1986

²² Describe the proposed program. If this application is to DEEPEN or PLUG BACK give the data on the present productive zone and proposed new productive zone. Describe the blowout prevention program, if any. Use additional sheets if necessary.

- MIRU pulling unit. TIH w/5-1/2" CIBP on tbg. Set Above Skaggs Drinkard perfs @ +/- 6500' (top Drinkard perf @ 6589').
- MIRU wireline w/packoff. TIH w/GR-CBL-CCL and log from PBTD to 5300'. TOH w/log. TIH w/4" csg gun and perforate Weir Blinebry, East Pool w/2 JSPF, 120 deg. spiral phasing from 5722' - 5896'. RD wireline.
- TIH w/6k treating packer on 2-3/8" tbg. RU DS. Acidize Weir Blinebry, East perfs w/3500 gallons 15% NEFE HCL carrying 210 7/8" 1.3 s.g. ballsealers. Pump at an average rate of 5-6 BPM w/maximum pressure not to exceed 6000#. RD DS.
- TIH w/10K frac packer on 3-1/2" 9.3# N-80 tbg. Set packer @ +/- 5640' (approx 100' above Blinebry perfs). RU DS.
- Frac Weir Blinebry, East perfs w/35,500 gallons 35# borate XLG 2% KCL water carrying 100,000# 16/30 Ottawa sand and tail in w/40,000# 16/30 curable resin coated sand. Pump frac at an average rate of 35 BPM at an estimated 5000# pump pressure w/maximum not to exceed 8000#. RD DS.
- Flowback well until it dies. TIH w/tbg, pump and rods. Place on test. Obtain DHC permit to commingle Skaggs Drinkard w/Weir Blinebry, East after production rates stabilize from the Blinebry. MIRU pulling unit and drill out CIBP and DHC Drinkard w/Blinebry

²³ I hereby certify that the rules and regulations of the Oil Conservation Division have been complied with and that the information given above is true and complete to the best of my knowledge and belief.		OIL CONSERVATION DIVISION	
Signature <i>Paul R. Wilcox</i>			
Printed Name Paul R. Wilcox		Approved By <i>ORIGINAL SIGNATURE OF JERRY ECKSTON</i>	
Title Field Technician		Title:	
Date 7/11/96		Approval Date JUL 12 1996 Expiration Date:	
Telephone 397-0419		Conditions of Approval: Attached <input type="checkbox"/>	

DISTRICT I
P.O. Box 1980, Hobbs, NM 88241-1980

DISTRICT II
P.O. Box Drawer DD, Artesia, NM 88211-0719

DISTRICT III
1000 Rio Brazos Rd., Aztec, NM 87410

DISTRICT IV
P.O. Box 2088, Santa Fe, NM 87504-2088

State of New Mexico
Energy, Minerals and Natural Resources Department

OIL CONSERVATION DIVISION

P.O. Box 2088
Santa Fe, New Mexico 87504-2088

Form C-102

Revised February 10, 1994

Instructions on back
Submit to Appropriate District Office
State Lease - 4 Copies
Fee Lease - 3 Copies

☐ AMENDED REPORT

WELL LOCATION AND ACREAGE DEDICATION PLAT

¹ API Number 30 025 06073	² Pool Code 63800	³ Pool Name WEIR BLINEBRY EAST
⁴ Property Code 11130	⁵ Property Name WEIR, C. H. -A-	⁶ Well No. 7
⁷ OGRID Number 022351	⁸ Operator Name TEXACO EXPLORATION & PRODUCTION INC.	⁹ Elevation 3578' DF

¹⁰ Surface Location

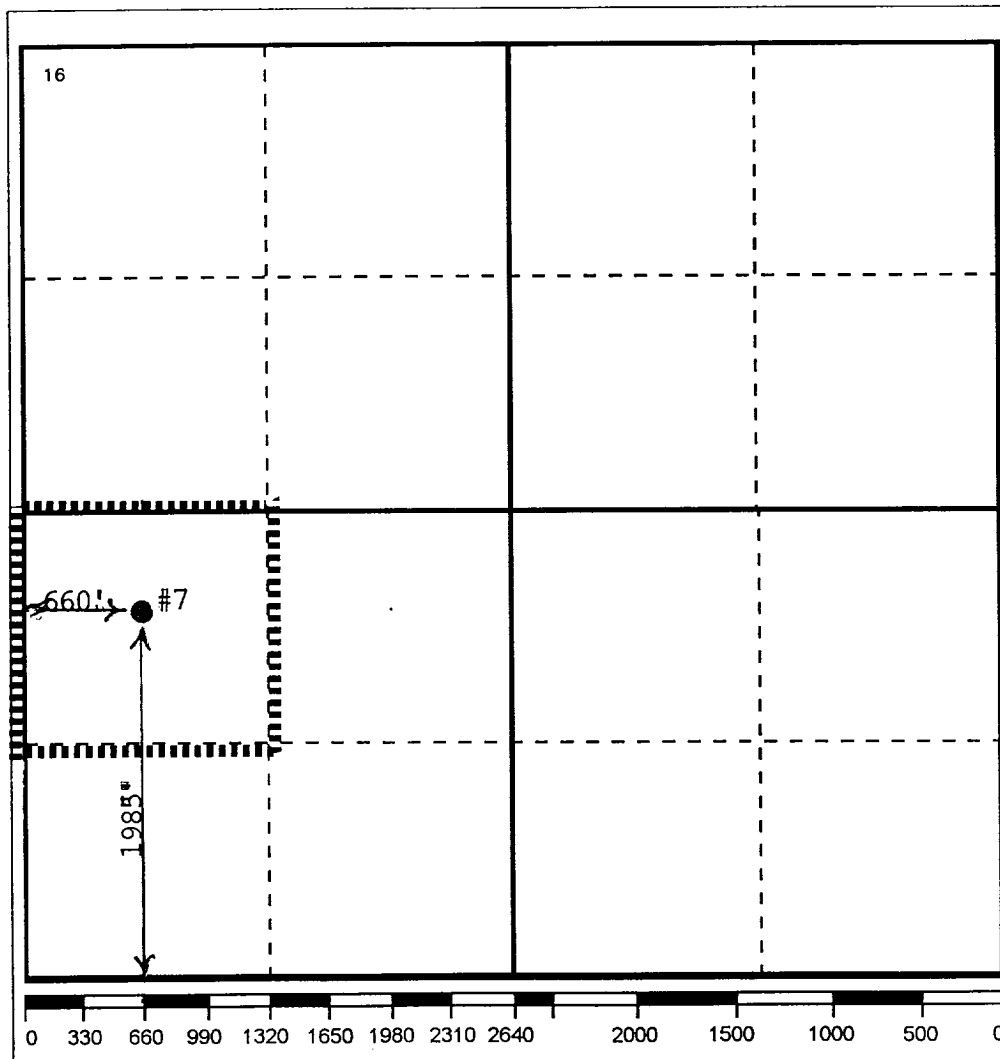
UI or lot no.	Section	Township	Range	Lot.Idn	Feet From The	North/South Line	Feet From The	East/West Line	County
L	12	20S	37E		1985	SOUTH	660	WEST	LEA

¹¹ Bottom Hole Location If Different From Surface

UI or lot no.	Section	Township	Range	Lot.Idn	Feet From The	North/South Line	Feet From The	East/West Line	County

¹² Dedicated Acres 40	¹³ Joint or Infill No	¹⁴ Consolidation Code	¹⁵ Order No.
-------------------------------------	-------------------------------------	----------------------------------	-------------------------

NO ALLOWABLE WILL BE ASSIGNED TO THIS COMPLETION UNTIL ALL INTERESTS HAVE BEEN CONSOLIDATED
OR A NON-STANDARD UNIT HAS BEEN APPROVED BY THE DIVISION



¹⁷ OPERATOR CERTIFICATION

I hereby certify that the information
contained herein is true and complete to the
best of my knowledge and belief

Signature

Paul R. Wilcox

Printed Name

Paul R. Wilcox

Position

Field Technician

Date

7/11/96

¹⁸ SURVEYOR CERTIFICATION

I hereby certify that the well location shown
on this plat was plotted from field notes of
actual surveys made by me or under my
supervision, and that the same is true and
correct to the best of my knowledge and
belief.

Date Surveyed

Signature & Seal of
Professional Surveyor

Certificate No.