

NEW MEXICO OIL CONSERVATION COMMISSION
SOUTHEAST NEW MEXICO PACKER LEAKAGE TEST

Operator Gulf Oil Corporation			Lease Theo. Anderson			Well No. 4	
Location of Well	Unit B	Sec 17	Twp 20S		Rge 37E	County Lea	
	Name of Reservoir or Pool		Type of Prod (Oil or Gas)	Method of Prod Flow, Art Lift	Prod. Medium (Tbg or Csg)	Choke Size	
Upper Compl	Evment		Gas	Flow	Csg.	--	
Lower Compl	Monument		Oil	Standing	Tbg.		

FLOW TEST NO. 1

Both zones shut-in at (hour, date): 9:30 a.m., 6-17-68

Well opened at (hour, date): <u>9:30 a.m., 6-18-68</u>	Upper Completion	Lower Completion
Indicate by (X) the zone producing.....	<u>X</u>	
Pressure at beginning of test.....	<u>770</u>	<u>1</u>
Stabilized? (Yes or No).....	<u>Yes</u>	<u>Yes</u>
Maximum pressure during test.....	<u>770</u>	<u>1</u>
Minimum pressure during test.....	<u>503</u>	<u>1</u>
Pressure at conclusion of test.....	<u>503</u>	<u>1</u>
Pressure change during test (Maximum minus Minimum).....	<u>267</u>	<u>0</u>
Was pressure change an increase or a decrease?.....	<u>Decr.</u>	<u>--</u>
Well closed at (hour, date): <u>9:30 a.m., 6-19-68</u>	Total Time On Production <u>24 hrs</u>	
Oil Production	Gas Production	
During Test: <u>0</u> bbls; Grav. <u>--</u> ;	During Test <u>3450.0</u> MCF; GOR <u>--</u>	
Remarks <u>Monument oil zone is standing - TA</u>		

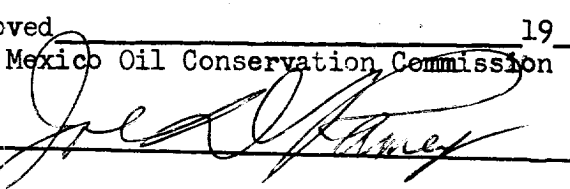
FLOW TEST NO. 2

Well opened at (hour, date):	Upper Completion	Lower Completion
Indicate by (X) the zone producing.....		
Pressure at beginning of test.....	<u>757</u>	<u>1</u>
Stabilized? (Yes or No).....		
Maximum pressure during test.....		
Minimum pressure during test.....		
Pressure at conclusion of test.....		
Pressure change during test (Maximum minus Minimum).....		
Was pressure change an increase or a decrease?.....		
Well closed at (hour, date)	Total time on Production	
Oil Production	Gas Production	
During Test: bbls; Grav. ;	During Test	MCF; GOR
Remarks		

I hereby certify that the information herein contained is true and complete to the best of my knowledge.

Approved
New Mexico Oil Conservation Commission

19



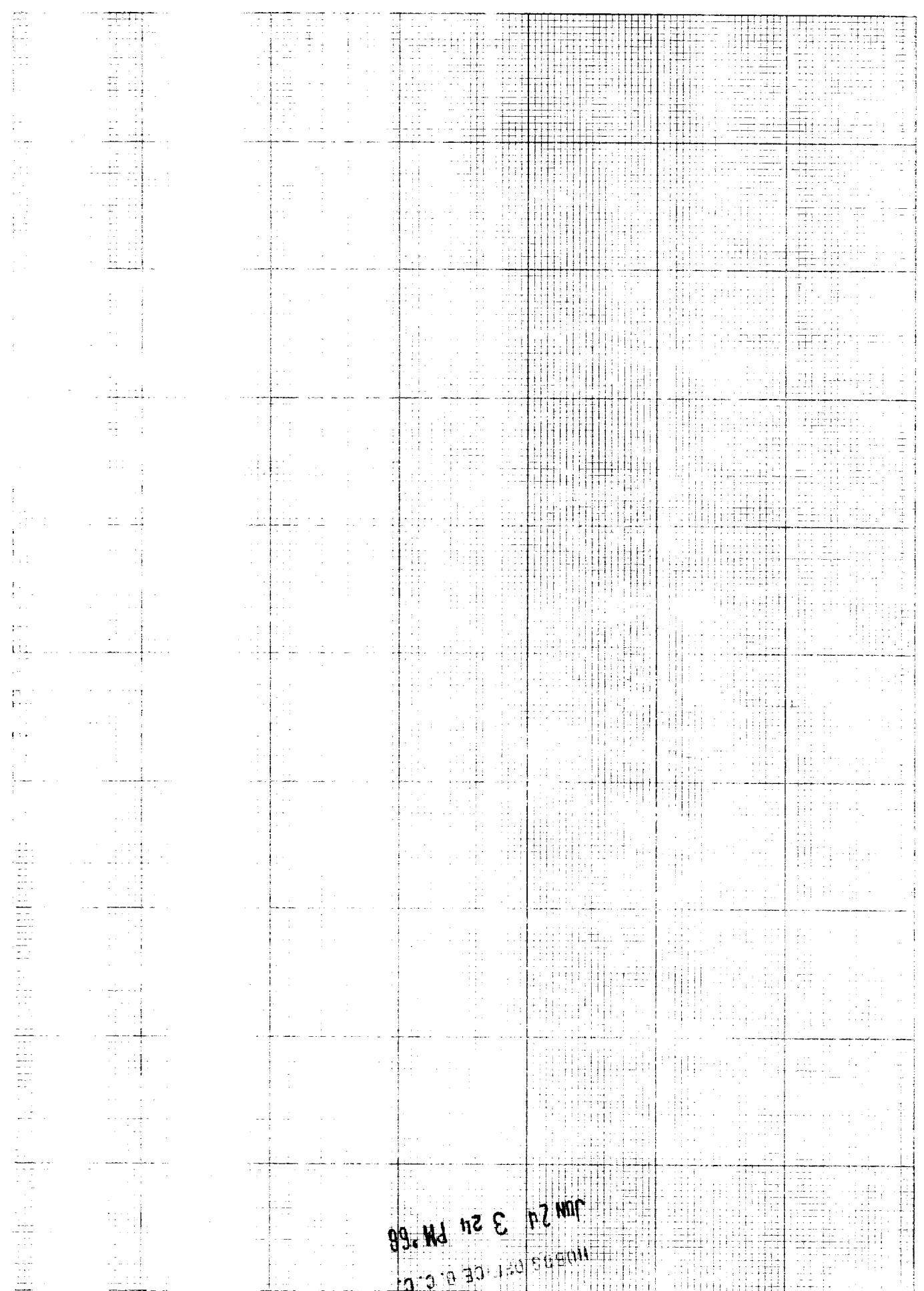
Operator Gulf Oil Corporation

By J. W. Davis

Title Well Tester

Date 6-24-68

1. The well shall be shut-in for a period of 24 hours after completion of the flow test. The shut-in shall be maintained until the pressure has stabilized. The pressure shall be recorded at the beginning and end of the shut-in period. The pressure shall be recorded at the beginning and end of the shut-in period.
2. The well shall be shut-in for a period of 24 hours after completion of the flow test. The shut-in shall be maintained until the pressure has stabilized. The pressure shall be recorded at the beginning and end of the shut-in period. The pressure shall be recorded at the beginning and end of the shut-in period.
3. The well shall be shut-in for a period of 24 hours after completion of the flow test. The shut-in shall be maintained until the pressure has stabilized. The pressure shall be recorded at the beginning and end of the shut-in period. The pressure shall be recorded at the beginning and end of the shut-in period.
4. The well shall be shut-in for a period of 24 hours after completion of the flow test. The shut-in shall be maintained until the pressure has stabilized. The pressure shall be recorded at the beginning and end of the shut-in period. The pressure shall be recorded at the beginning and end of the shut-in period.
5. Following completion of Flow Test No. 1, the well shall again be shut-in in accordance with paragraph 3 above.
6. Flow Test No. 2 shall be conducted even though no leak was indicated during Flow Test No. 1. Procedure for Flow Test No. 2 is to be the same as for Flow Test No. 1 except that the previously produced zone shall remain shut-in while the previously shut-in zone is produced.
7. All pressures, throughout the entire test, shall be continuously measured and recorded with recording pressure gauges, the accuracy of which must be checked with a deadweight tester at least twice, once at the beginning and once at the end of each flow test.
8. The results of the above-described tests shall be filed in triplicate within 15 days after completion of the test. Tests shall be filed with the appropriate District Office of the New Mexico Oil Conservation Commission on Southeast New Mexico Packer Leakage Test Form Revised 11-1-58 together with the original pressure recording gauge charts with all the deadweight pressures which were taken indicated thereon. In lieu of filing the aforesaid charts, the operator may construct a pressure versus time curve for each zone of each test, indicating thereon all pressure changes which may be reflected by the gauge charts as well as all deadweight pressure readings which were taken. If the pressure curve is submitted, the original chart must be permanently filed in the operator's office. Form C-116 shall also accompany the Packer Leakage Test Form when the test period coincides with a gas-oil ratio test period.



JUN 24 3 24 PM '68
OIL & GAS DIVISION
NEW MEXICO