

## OIL CONSERVATION DIVISION

**P.O. Box 2088**

**Santa Fe, New Mexico 87504-2088**

DISTRICT

P.O. Box 1980, Hobbs, NM 88240

## DISTRICT II

P.O. Drawer DD, Artesia, NM 88210

## DISTRICT II

1000 Rio Brazos Rd., Aztec, NM 87410

# WELL LOCATION AND ACREAGE DEDICATION PLAT

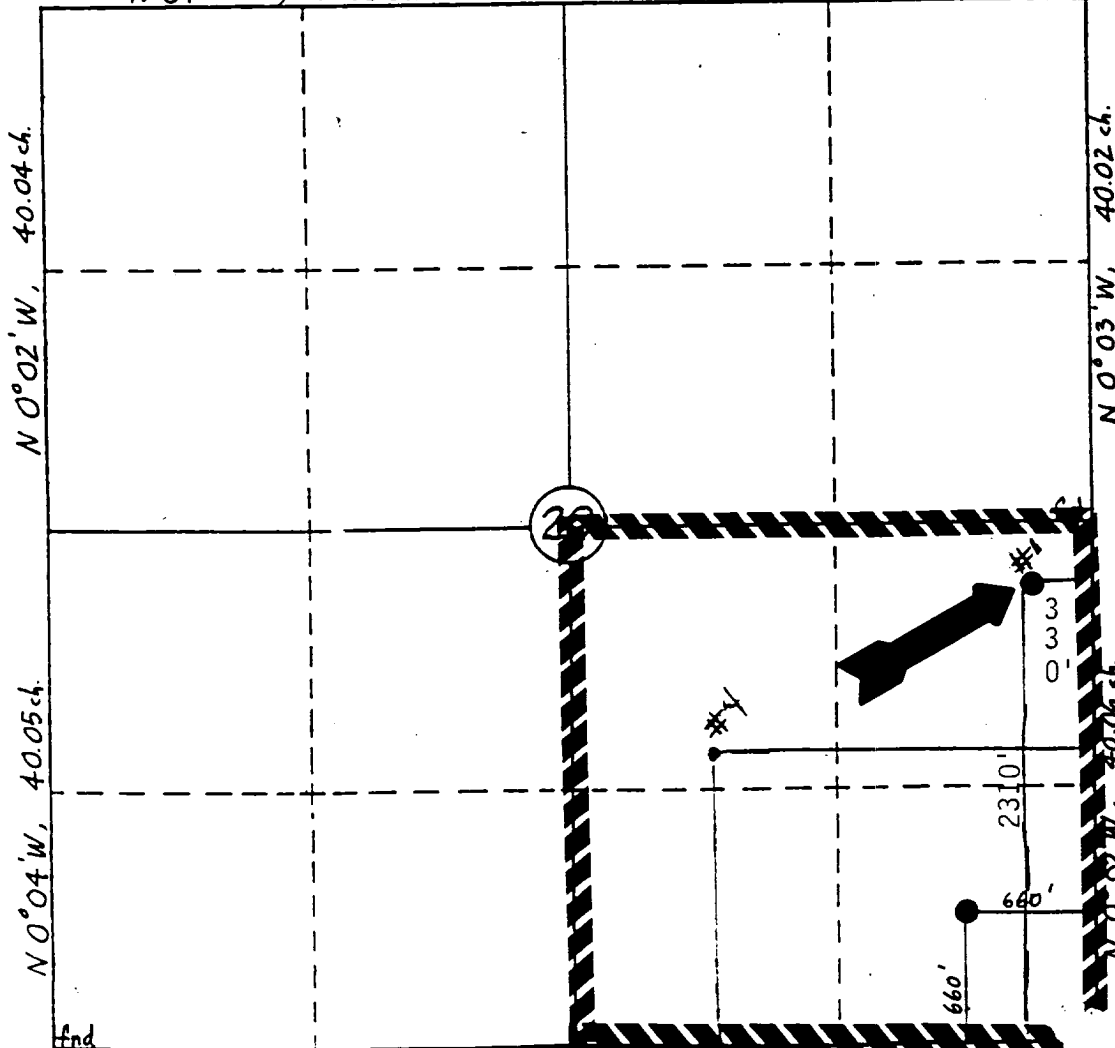
**All Distances must be from the outer boundaries of the section**

Operator MERIDIAN OIL INC.		Lease STATE "A" 20		Well No. 1
Unit Letter 1	Section 20	Township 20 SOUTH	Range 37 EAST NMPM	County LEA
Actual Footage Location of Well:				
2310 feet from the SOUTH		line and	330 feet from the EAST line	
Ground level Elev. 3510	Producing Formation QUEEN SAND		Pool EUMONT (PRORATED GAS)	Dedicated Acreage:  Acres
<p>1. Outline the acreage dedicated to the subject well by colored pencil or hatchure marks on the plat below.</p> <p>2. If more than one lease is dedicated to the well, outline each and identify the ownership thereof (both as to working interest and royalty).</p> <p>3. If more than one lease of different ownership is dedicated to the well, have the interest of all owners been consolidated by communitization, unitization, force-pooling, etc.?</p> <p><input type="checkbox"/> Yes      <input type="checkbox"/> No      If answer is "yes" type of consolidation _____</p> <p>If answer is "no" list the owners and tract descriptions which have actually been consolidated. (Use reverse side of this form if necessary. _____)</p> <p>No allowable will be assigned to the well until all interests have been consolidated (by communitization, unitization, forced-pooling, or otherwise) or until a non-standard unit, eliminating such interest, has been approved by the Division.</p>				



N 89° 45' W, 40.12 ch.

N 89° 58' W, 40.12 ch.



### OPERATOR CERTIFICATION

I hereby certify that the information contained herein is true and complete to the best of my knowledge and belief.

Signature \_\_\_\_\_

DONNA WILLIAMS

Printed Name

PRODUCTION ASSISTANT

**Position**

MERIDIAN OIL INC.

Company

6/17/93

Date \_\_\_\_\_

### SURVEYOR CERTIFICATION

I hereby certify that the well location shown on this plat was plotted from field notes of actual surveys made by me or under my supervision, and that the same is true and correct to the best of my knowledge and belief.

5-18-93

Date Surveyed \_\_\_\_\_

WILLIAM E. MAHNKE II

Signature & Seal of  
Professional Submitter

Certification No.

~~8466~~