

Submit 3 Copies To Appropriate District Office
District I
1625 N. French Dr., Hobbs, NM 88240
District II
1301 W. Grand Ave., Artesia, NM 88210
District III
1000 Rio Brazos Rd., Aztec, NM 87410
District IV
1220 S. St. Francis Dr., Santa Fe, NM 87505

State of New Mexico
Bureau of Geology, Minerals and Natural Resources

Form C-103
Revised March 25, 1999

OIL CONSERVATION DIVISION
1220 South St. Francis Dr.
Santa Fe, NM 87505

WELL API NO. 30-025-06211
5. Indicate Type of Lease STATE <input checked="" type="checkbox"/> FEE <input type="checkbox"/>
6. State Oil & Gas Lease No.
7. Lease Name or Unit Agreement Name: Bell Ramsay (NCT-C) Com
8. Well No. 1
9. Pool name or Wildcat Eumont; Yates-7Rivers-Queen

SUNDRY NOTICES AND REPORTS ON WELLS
(DO NOT USE THIS FORM FOR PROPOSALS TO DRILL OR TO DEEPEN OR PLUG BACK TO A DIFFERENT RESERVOIR. USE "APPLICATION FOR PERMIT" (FORM C-101) FOR SUCH PROPOSALS.)

1. Type of Well:
Oil Well ☐ Gas Well ☒ Other

2. Name of Operator
Chevron U.S.A. Inc

3. Address of Operator
P. O. Box 1150, Midland, TX 79702

4. Well Location
Unit Letter J : 1650 feet from the South line and 2310 feet from the East line
Section 34 Township 20S Range 37E NMPM County LEA

10. Elevation (Show whether DR, RKB, RT, GR, etc.)
3509' GR

11. Check Appropriate Box to Indicate Nature of Notice, Report or Other Data

NOTICE OF INTENTION TO:		SUBSEQUENT REPORT OF:	
PERFORM REMEDIAL WORK <input type="checkbox"/>	PLUG AND ABANDON <input type="checkbox"/>	REMEDIAL WORK <input type="checkbox"/>	ALTERING CASING <input type="checkbox"/>
TEMPORARILY ABANDON <input type="checkbox"/>	CHANGE PLANS <input type="checkbox"/>	COMMENCE DRILLING OPNS. <input type="checkbox"/>	PLUG AND ABANDONMENT <input checked="" type="checkbox"/>
PULL OR ALTER CASING <input type="checkbox"/>	MULTIPLE COMPLETION <input type="checkbox"/>	CASING TEST AND CEMENT JOB <input type="checkbox"/>	
OTHER: <input type="checkbox"/>		OTHER: <input type="checkbox"/>	

12. Describe proposed or completed operations. (Clearly state all pertinent details, and give pertinent dates, including estimated date of starting any proposed work). SEE RULE 1103. For Multiple Completions: Attach wellbore diagram of proposed completion or recompilation.

This well is part of the New Mexico "P&A Pilot Project" conducted by Benterra Corporation to demonstrate the plugging and abandonment process using highly compressed sodium bentonite nodules as the plugging medium.

Bottom Plug @ 3230' - 3502'	61 cu ft ZONITE	Tagged
B/Salt Plug @ 2495' - 2625'	29 cu ft ZONITE	Tagged
T/Salt-Rustler Plug @ 1190' - 1325'	30 cu ft ZONITE	Tagged
FW/Shoe Plug @ 350' - 550'	47 cu ft ZONITE	Tagged
Top Plug @ Surface - 60'	8 cu ft ZONITE	
Poured 20 gals ZONITE into 9 5/8" x 7" annulus		

Set marker. Chevron to clean location.
Plugging operations began 10/4/01 and were completed on 4/5/02.

I hereby certify that the information above is true and complete to the best of my knowledge and belief.

SIGNATURE J.K. Ripley by Kara Shouff TITLE Regulatory OA DATE 4/30/02
Type or print name J.K. Ripley Telephone No. (915) 687-7148

(This space for State use)
APPROVED BY [Signature] TITLE COMPLIANCE OFFICER DATE _____
Conditions of approval, if any:

GW W

JUL 31 2002

Final P&A

WELL NAME: Bell Ramsay NCT-C Com #1
 API NUMBER: 30-025-06211
 COORDINATES: 1650' FSL & 2310' FEL Unit J
 SEC/TWN/RNG: 34 - 20S - 37E
 COUNTY/STATE: Lea, NM
 DRILLED: 1954

OPERATOR: Chevron
 FIELD: Eumont
 DATE: April 30, 2002
 BY: DCD/CRS

RKB = N/A

Top Plug @ Surface - 60'
 8 cu ft ZONITE
 Wiper Plug @ 60'

Poured 20 gals ZONITE
 into 9 5/8" x 7" annulus

Formation Tops	
Salt	1355'
Yates	2643'
7 Rivers	2893'
Queen	3390'
Penrose	3508'

Legend	
Cement	
ZONITE	

FW/Shoe Plug @ 350' - 550'
 47 cu ft ZONITE
 Wiper Plug @ 550'

9 5/8" - 32.3# @ 450' w/ 335 sx, circ

T/Salt-Rustler Plug @ 1190' - 1325'
 30 cu ft ZONITE
 Wiper Plug @ 1325'

Top of Salt = 1355'

B/Salt Plug @ 2495' - 2625'
 29 cu ft ZONITE
 Wiper Plug @ 2625'

ZONITE Plugs	
Top Plug	Surface - 60'
FW/Shoe Plug	350' - 550'
T/Salt-Rustler Plug	1190' - 1325'
B/Salt Plug	2495' - 2625'
Bottom Plug	3230' - 3502'

Bottom Plug @ 3230' - 3502'
 61 cu ft ZONITE

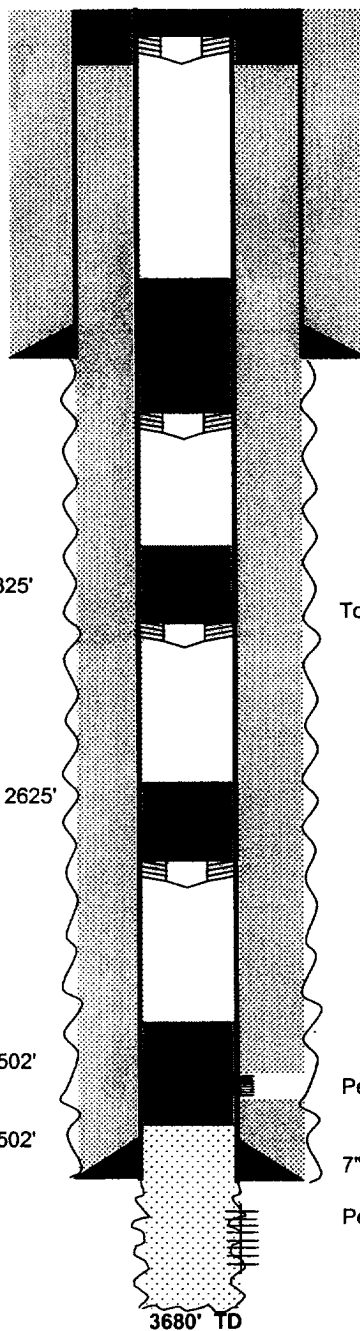
Perfs: 3440-3450' w/ 4 JSPF

Fill @ 3502'

7" - 20# @ 3534' w/ 1800 sx TOC = 45' by TS

Perfs across OH 3555 - 3669' overall

3680' TD



Daily Operations Summary

OPERATOR Chevron U.S.A. Production Company			DATE See Below	
LEASE & WELL NUMBER Bell Ramsay (NCT-C) Com #1			COUNTY & STATE Lea, New Mexico	
FIELD Eumont			FORMATION Queen – Penrose	
TD 3680'	PBD 3680'	RKB N/A	PERFS OH 3534' – 3680' Perfs 3440' – 3450'	
SURFACE 95/8" @ 450'	INTERMEDIATE	PRODUCTION 7" @ 3534'	CIBP DEPTH None	
OPERATOR CHARGE CODE UWPWBA0006ABN			BENTERRA CHARGE CODE NWNMR-00101-004	
This well is part of the New Mexico "P&A Pilot Project" conducted by Benterra Corporation to demonstrate the plugging and abandonment process using highly compressed sodium bentonite nodules as the plugging medium.				
10/4/01				
MIRU Benterra #4. SIP = 0 psi. Remove WH and install WCV. RU lubricator. WIH w/ SB and tag btm at 3502' (Note: Chevron fished tbg and cleaned out to a reported 3455'). FL @ 3400. RU Key pump truck and displace csg with 120 bbls fresh water. Poured 16 cu ft ZONITE, wait and tag at 3430'. SWI and SDON.				
10/5/01				
SIP = 0 psi. Poured 23 cu ft ZONITE, wait and tagged at 3328', FL at 2000'. Poured 22 cu ft ZONITE, wait and tag at 3240', FL at 1900'. Bottom plug set 3230' – 3502' (272') with 61 cu ft ZONITE as of 10:30 AM 10/5/01. RD Benterra.				
10/8/01				
MIRU Benterra. SIP = 0 psi. Remove WH, WIH with SB and tag at 3221', FL at 2900'. FL too low to add upper plugs. Install WH and RD Benterra. RU Key pump truck and loaded csg with 65 bbls fresh water, which equates to a FL of 1600' – WL check was inaccurate.				
10/23/01				
MIRU Benterra #4. SIP = 125 psi. Laid blowdown line and blew well down in 10 seconds. Fluid at surface was "black water". SWI and SDON.				
10/24/01				
MIRU Benterra #4. SIP = 30 psi, blew down immediately. Remove WH and install WCV. Bubbles of gas appearing through top of fluid, source unknown. WIH with SB and tagged top of plug at 3230', OK. POH with SB, remove WCV, install WH and SWI. Will continue to monitor press and evaluate before setting next plug. RD Benterra.				
10/26/01				
Open needle valve – strong blow. SI and will return to get press reading.				

10/29/01

SIP = 120 psi, bled off immediately. Called E.L. Gonzalez with NMOCD and discussed the fact that this well is pressuring up to 120 – 125 psi and a gas source exists above the bottom plug set from 3230' – 3502'. I stated that I thought this plug was holding since the wellbore will sustain fluid to the surface and the source must be between the B/Salt at 2550' and top of plug at 3230'. Initially, E.L. recommended trying to pump into wellbore but then approved proceeding with setting B/Salt plug and then monitoring well before continuing with upper plugs.

10/30/01

MIRU Benterra Unit #4. SIP = 120 psi, bled down immediately. Removed WH – heavy gas bubbling, fluid at surface. Made trip with SB to top of plug at 3232', OK. Pushed 7" wiper rubber to 2625'. Install WH and SDON.

10/31/01

SIP = 120 psi, blew down immediately. Remove WH, heavy gas bubbling w/ fluid at surface. Poured 29 cu ft ZONITE, wait and tag at 2495'. B/Salt plug set from 2495' – 2625' (130') with 29 cu ft of ZONITE as of 9:55 AM 10/31/01. Installed WH and closed well in. RD Benterra. Will monitor well to determine if source of gas pressuring has been isolated.

11/9/01

MIRU Benterra Unit #4. SIP = static. Remove WH - fluid at 10' from surf, no bubbling present. Made trip with SB and tag plug at 2500', OK. Apparently, the B/salt plug has shut-off gas source that was causing pressure buildup and bubbling. Pushed 7" wiper rubber to 1325'. Poured 30 cu ft ZONITE, wait and tag at 1190'. T/Salt - Rustler plug set 1190' – 1325' (135') as of 1:00 PM 11/9/01. Pushed 7" wiper rubber to 550'. Poured 47 cu ft ZONITE, wait and tag at 350'. Fresh water - 95/8" shoe plug set 350' – 550' (200') as of 3:00 PM 11/9/01. Install WH and RD Benterra.

12/10/01

SIP = Slight blow.

12/19/01

SIP = 5 psi, immediate blowdown.

1/4/02

MIRU Benterra #4. SIP = +/- 5 psi, immediate blow down. Removed WH, some bubbling was present. Made trip with SB & tag plug at 350', OK. Install WH & SWI.

1/9/02

SIP = Slight blow. Checked w/ LEL, some hydrocarbon gas.

1/14/02

SIP = Slight blow. Removed WH, well no longer bubbling.

1/28/02

SIP = Static. Removed WH, water at surface, no bubbling.

2/4/02

SIP: 7" = 20 psi, bled off quickly. Surface csg = static.

2/5/02

SIP: 7" = medium blow, bled down immediately. Annulus = slight blow, bled down immediately.

2/7/02

SIP: 95/8" x 7" = puff. 7" = puff. RU Key pump truck to annulus, pump 4 bbls fresh water and press to 200 psi. Bled down quickly – released press and allowed air to work out. Repress to 200 psi with 1 BFW, bled to 0 psi in less than 1 minute. No indication of communication to 7" csg. Connect to 7" - press to 200 psi and held OK. Left press on 7". Reconnect to annulus, load with 1 BFW and press to 300 psi, bled to 0 psi in less than 1 min. RD Key. Left 200 psi on 7" csg.

2/11/02

SIP: 7" csg = 40 psi. Annulus = slight blow. (note: 40 psi on 7" csg is probably what remained from pressure testing with truck on 2-7-02.)

2/20/02

No press on 7" csg or annulus, both have slight puff.

3/14/02

No press on 7" csg or annulus - no puffs – both are static.

3/18/02

SIP = 0 psig on 7" csg. Open needle valve to air, squirted water +/- 1 ft into air and died – would not run over top of valve and no gas bubbling. Surface csg annulus SIP = 0 psig. Open needle valve - very, very slight blow for < 5 seconds. SWI.

3/20/02

SIP = 0 psig on 7" csg. Opened needle valve and water again squirted +/- 1' into air and died. Would not run over and no gas bubbling. Did not check surface csg riser – rains created water hole around valve. Discussed wellbore characteristics in meeting with Chris Williams and Gary Wink with NMOCD – Chris approved proceeding with setting top plug, WH cut-off and final abandonment of wellbore.

3/22/02

MIRU Benterra #4. SIP = static on 7" and surface. Remove WH, made trip with 3 1/2" SB and tag plug at 350', OK. FL at surface. Pushed 7" wiper rubber to 60' (Note: this is the required depth for top plugs per draft guidelines for bentonite plugging operations in NMOCD District 1). Poured 8 cu ft ZONITE and filled 7" csg to surface. Top plug in place as of 9:50 am 3/22/02. RD Benterra.

4/5/02

Key Energy Services dug out cellar and cut off csgs and WH to 4' below GL (Note: no LEL problems found prior to making cut). Placed 20 gals ZONITE into 95/8" x 7" annulus, welded on cap with 1/2" brass valve and installed dry hole marker with well identification. Dug out & cut off guywire anchors to 4' below GL. Back filled all excavations. Turned over to ChevronTexaco for location clean up and NMOCD inspection. Final Report.