

Submit 3 Copies To Appropriate District Office

District I
1625 N. French Dr., Hobbs, NM 88240
District II
1301 W. Grand Ave., Artesia, NM 88210
District III
1000 Rio Brazos Rd., Aztec, NM 87410
District IV
1220 S. St. Francis Dr., Santa Fe, NM 87505

State of New Mexico
En. gy, Minerals and Natural Resources

Form C-103
Revised March 25, 1999

CIL CONSERVATION DIVISION
1220 South St. Francis Dr.
Santa Fe, NM 87505

SUNDRY NOTICES AND REPORTS ON WELLS
(DO NOT USE THIS FORM FOR PROPOSALS TO DRILL OR TO DEEPEN OR PLUG BACK TO A DIFFERENT RESERVOIR. USE "APPLICATION FOR PERMIT" (FORM C-101) FOR SJCH PROPOSALS.)

1. Type of Well:

Oil Well ☐ Gas Well ☐ Other ☒

2. Name of Operator

Chevron U.S.A. Inc

3. Address of Operator

P. O. Box 1150, Midland, TX 79702

4. Well Location

Unit Letter M : 660 feet from the North line and 660 feet from the West line

Section 29

Township 20S

Range 37E

NMPM

County LEA

10. Elevation (Show whether DR, RKB, RT, GR, etc.)

3534' GR

WELL API NO.

30-025-06276

5. Indicate Type of Lease

STATE ☒ FEE ☐

6. State Oil & Gas Lease No.

7. Lease Name or Unit Agreement Name:

Bell Ramsay (NCT-B)

8. Well No. 1

9. Pool name or Wildcat

Eumont; Yates-7 Rivers-Queen

11. Check Appropriate Box to Indicate Nature of Notice, Report or Other Data

NOTICE OF INTENTION TO:

PERFORM REMEDIAL WORK ☐ PLUG AND ABANDON ☐

TEMPORARILY ABANDON ☐ CHANGE PLANS ☐

PULL OR ALTER CASING ☐ MULTIPLE COMPLETION ☐

OTHER: ☐

SUBSEQUENT REPORT OF:

REMEDIAL WORK ☐ ALTERING CASING ☐

COMMENCE DRILLING OPNS. ☐ PLUG AND ABANDONMENT ☒

CASING TEST AND CEMENT JOB ☐

OTHER: ☐

12. Describe proposed or completed operations. (Clearly state all pertinent details, and give pertinent dates, including estimated date of starting any proposed work). SEE RULE 1103. For Multiple Completions: Attach wellbore diagram of proposed completion or recompletion.

This well is part of the New Mexico "P&A Pilot Project" conducted by Benterra Corporation to demonstrate the plugging and abandonment process using highly compressed sodium bentonite nodules as the plugging medium.

Perf Plug @ 2725' - 2850' 29 cu ft Zonite Tagged
Cavity Shot Plug @ 1157' - 1176' 5 cu ft Zonite Tagged

T/Salt-Rustler
Shoe/FW Plug @ 512' - 1157' 345 sx Class C Cmt Circ to surface

Top Plug 3' - 33' 7 cu ft Zonite

Set Marker. Chevron to clean location.

Plugging Operations began 9/11/01 and completed on 4/3/02. Wellbore diagram attached.

I hereby certify that the information above is true and complete to the best of my knowledge and belief.

SIGNATURE J.K. Ripley / by Cara Shoaff TITLE Regulatory OA

DATE 4/30/02

Type or print name J.K. Ripley

Telephone No. (915) 687-7148

(This space for State use)

APPROVED BY [Signature] TITLE OFFICER

DATE JUL 1 2002

Conditions of approval, if any

GWW

**Final P&A
Schematic**

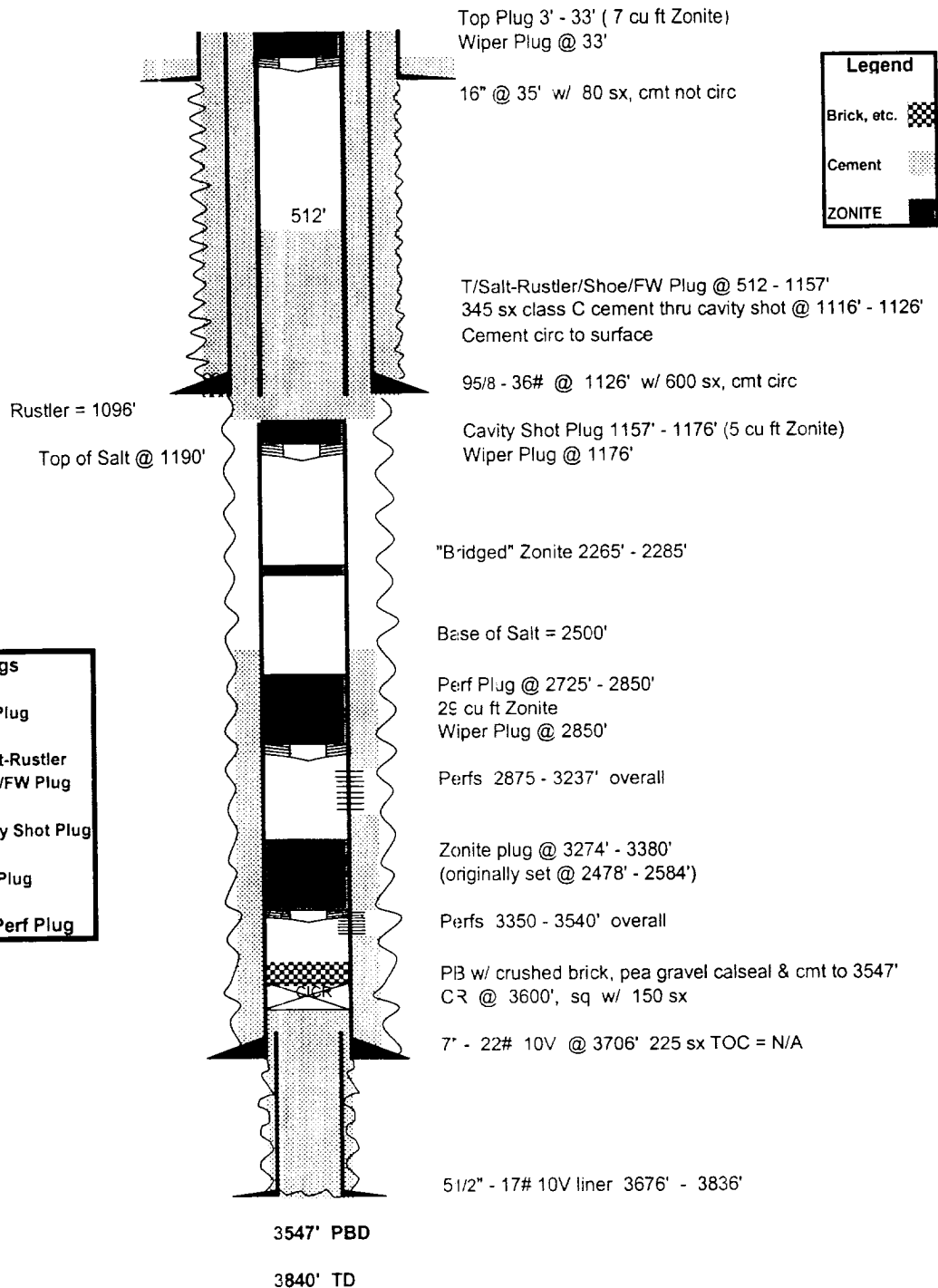
Well Name: Bell Ramsey (NCT-B) #1
API Number: 30-025-06276
Coordinates: 660' FNL & 660' FV/L Unit M
S - T - R: 29 - 20S - 37E
County / State: Lea County, NM
Drilled: 1937

Operator: Chevron
Field: Eumont
Date: 4/17/02
By: CRS/DCD

RKB = N/A

Formation Tops	
Rustler	1096'
Salt	1190'
Base of Salt	2500'
Yates	2640'
7 Rivers	2910'
Queen	3343'

ZONITE Plugs	
3 - 33'	Top Plug
512' - 1157'	T/Salt-Rustler Shoe/FW Plug
1157' - 1176'	Cavity Shot Plug
2725' - 2850'	Perf Plug
3274' - 3380'	1st Perf Plug



P&A

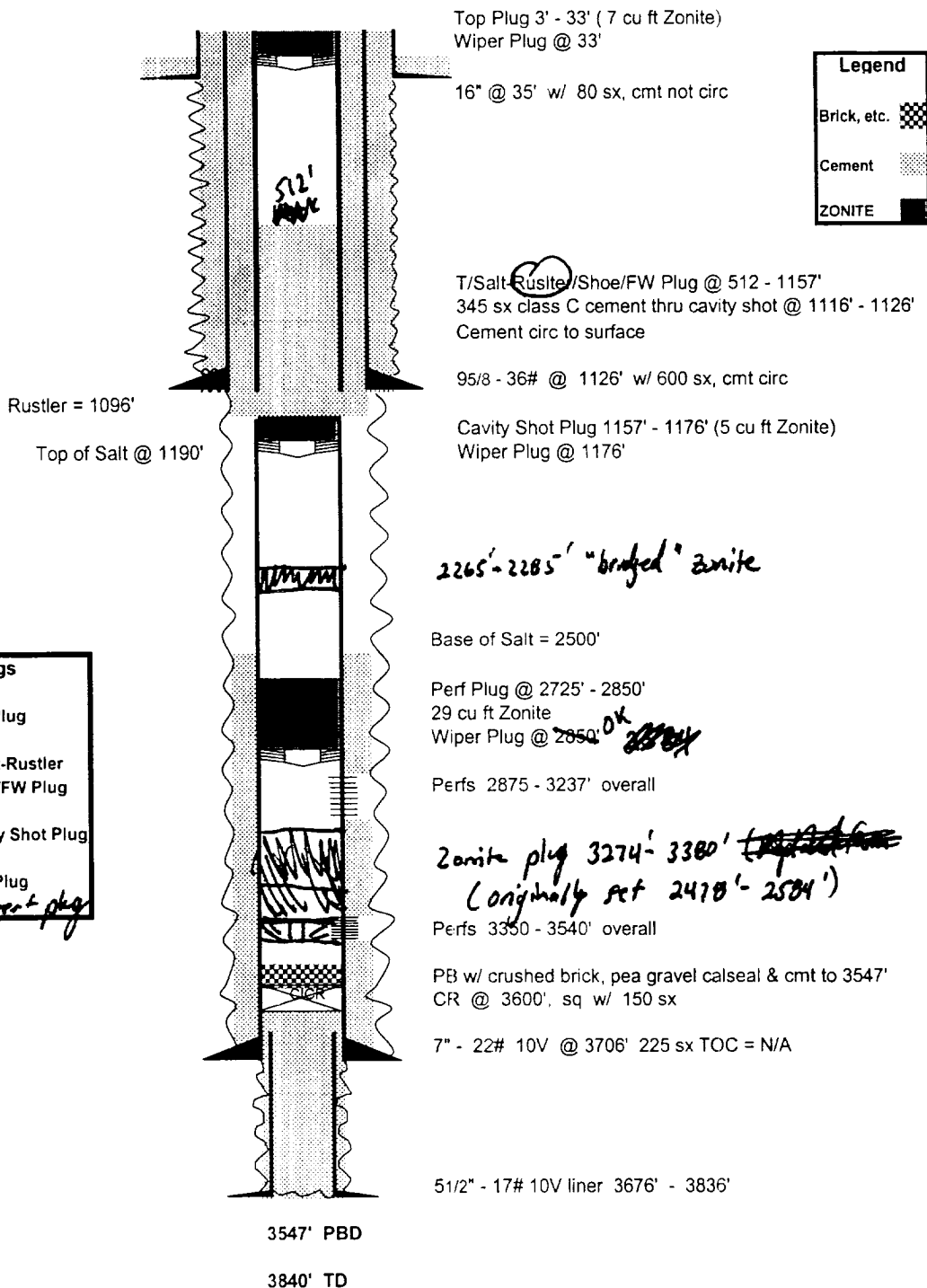
Well Name: Bell Ramsey (NCT-B) #1
 API Number: 30-025-06276
 Coordinates: 660' FNL & 660' FV/L Unit M
 S - T - R: 29 - 20S - 37E
 County / State: Lea County, NM
 Drilled: 1937

Operator: Chevron
 Field: Eumont
 Date: 4/17/02
 By: CRS/DCD

RKB = N/A

Formation Tops	
Rustler	1096'
Salt	1190'
Base of Salt	2500'
Yates	2640'
7 Rivers	2910'
Queen	3343'

ZONITE Plugs	
3 - 33'	Top Plug
512' - 1157'	T/Salt-Rustler Shoe/FW Plug
1157' - 1176'	Cavity Shot Plug
2725' - 2850'	Perf Plug
3274' - 3380'	1st perf plug



Legend	
Brick, etc.	
Cement	
ZONITE	

Daily Operations Summary

OPERATOR Chevron U.S.A. Production Company			DATE See Below	
LEASE & WELL NUMBER Bell Ramsay (NCT-B) #1			COUNTY & STATE Lea, New Mexico	
FIELD Eumont			FORMATION Queen	
TD 3840'	PBD 3547'	RKB N/A	PERFS 2875' – 3237' & 3350' – 3540'	
SURFACE 95/8" @ 1126'	PRODUCTION 7" @ 3706'	LINER 5½" @ 3676'	CR DEPTH 3600'	
OPERATOR CHARGE CODE UWPWBA0004ABN			BENTERRA CHARGE CODE NWNMR-00101-002	
This well is part of the New Mexico "P&A Pilot Project" conducted by Benterra Corporation to demonstrate the plugging and abandonment process using highly compressed sodium bentonite nodules as the plugging medium.				
9/11/01				
MIRU Benterra #4. SIP = 30 psi. WIH with 3½" SB to +/- 2850'. Gravity fed 50 bbl freshwater into well to kill gas. Pushed 7" wiper rubber to 2584' – unable to push deeper. "Beat" on plug without success. POH w/ SB and SDON.				
9/12/01				
(Discussed with Gary Wink w/ NMOCD and he approved setting bottom plug from 2484' – 2584'.) Tag at 2584', no movement overnight. FL at 2200'. Poured 20 cu ft ZONITE, wait and tag at 2495' - FL at 1990'. Poured 4 cu ft ZONITE, wait and tag at 2478'. Install WH and close well in. Bottom plug set 2478' – 2584' (106') with 24 cu ft ZONITE as of 11:40 AM 9/12/01. RD Benterra.				
9/18/01				
MIRU Benterra #4. SIP = static. Tag plug at 2746' = movement down of 262'. Plug now at 2746' – 2852' but is still above perfs. WO Key pump truck. Pumped 150 BW and did not load (cap = 108 bbls). WIH with SB and tag plug at 3274' = add'l downward movement of 528'. Plug now at 3274' – 3380' and is between perfed intervals. RD Benterra. Notified E. L. Gonzalez w/ NMOCD of plug dislodgment and intent to reset plug.				
9/19/01				
MIRU Benterra #4. SIP = slight vac. Remove WH and installed WCV. WIH and tag plug at 3274', OK. FL at 2974'. RU Key PT and pumped 70 bbl freshwater. Pushed 7" wiper rubber to 2850' (encountered no problems at previous stopping point at 2584'). Poured 15 cu ft ZONITE, wait and tag at 2896'. FL at 1100'. Poured 14 cu ft, wait and tag at 2725'. FL at 900'. Bottom plug now set 2725' – 2850' (125') with 29 cu ft ZONITE as of 12:45 PM 9/19/01. RD Benterra.				
9/20/01				
MIRU Benterra #4. SIP = static. WIH with SB and tag at 2721'. FL at 460'. RD Benterra				
10/5/01				
MIRU Benterra #4. SIP = static. WIH with SB and tag plug at 2713', OK. FL at 608'. SWI and RD Benterra.				

10/8/01

RU Key pump truck and load well bore with 65 bbl freshwater.

10/9/01

MIRU Benterra to add 20 linear feet of ZONITE to bottom plug. Removed WH and poured approximately 4 cu ft ZONITE, wait and tag at 1568'. Pull up and wait 10 minutes, tag at 1610'; wait 30 minutes and tag at 2040'; wait 20 minutes and tag at 2100'; wait 10 minutes and tag at 2260'. Progress is slow and plug appears to be settling to bottom and it is below depth required to set "cut plug" - assume plug will fall to bottom. RD Benterra - will re-tag at next RU to see if this additional ZONITE has fallen to bottom.

10/22/01

SIP = static. RU Key pump truck. Pumped down side outlet of csg while venting out top of WH. Pump 10 bbls freshwater and loaded - "beached" oil out top of WH. SD until vac truck available. RU Key pump and vac trucks. Gravity fed fresh water down csg side outlet while recovering oil out top of WH. Added 10 bbl fresh water while recovering 10 BO. Process too slow - shut down even though good oil still being recovered. RD trucks. Expect to pull csg so oil will be recovered when well is circulated. FL was at approximately 250', based on requiring 10 BW to load.

11/16/01

MIRU Benterra Unit #4. SIP = 30 psi, bled down immediately. Remove WH, no bubbling - oil on top. Made trip with SB and tag at 2265', which is depth that ZONITE was left on 10/9/01 when attempt was made to lengthen bottom plug. Install WH and RD Benterra.

12/10/01

SIP = Static

12/19/01

SIP = Static. Show of oil on top of fluid.

12/21/01

MIRU Benterra #4 & Enviro-Vat unit. SIP = Static. Ran hose into wellbore, vac off oil & filled wellbore with water. Repeated cycle until all oil removed from wellbore. RD.

1/9/02

SIP = Slight flow of water from 5 1/2" csg.

1/21/02

MIRU Benterra #4. Check for press - too low to record but blew out 'fluffy paraffin-like' substance. Remove WH, made trip with SB and tag at 2265', OK. Substance may only be a skim on top of water as the WL came out of hole water-wet. Installed WH & RD.

1/23/02

Met with Gary Wink w/ NMOCD @ 3:00 PM MST. Requested to change P&A procedures - approved permit was for pulling 7" pipe from below 95/8" shoe @ Rustler-T/Salt, setting ZONITE plugs @ 95/8 shoe/Rustler and at fresh water zone 250' - 350'. Explained that pulling 7" csg was uneconomical and Benterra wanted to perform a cavity shot @ 95/8" shoe and set ZONITE plug. Also requested elimination of fresh water plug so that a cavity shot would not be needed at this shallow depth. Gary approved (1) not pulling 7", (2) using cavity shot and ZONITE to set 95/8 shoe/Rustler plug and (3) elimination of fresh water plug.

1/24/02

MIRU Benterra #4. SIP = very slight blow, no recordable press or water flow. Remove WH, fluid @ surface & no bubbling. Made trip with SB & tag @ 2264', OK. Pushed 7" wiper rubber to 1176'. Poured 5 cu ft ZONITE, wait & tag @ 1157', cavity shot plug in place. SDON.

1/25/02

RU Key WL, pump & vac trucks. RU WL mast, installed WL BOP and prepped cavity shot = 26 – 2½" OD x 4½" long cast boosters strung on prima cord and attached to WL with 18' nylon cord. WIH w/ shot and placed from 1116' – 1126' (5' RKB correction). Fired shot & POH, recovered all WL & rope. Had blow on 7" csg, vented to vac truck. RD Key WL truck & mast. Remove WL BOP & install WH – no flow from 7" or 95/8" x 7" annulus. RU Pump truck & attempt to circ down 7" and out 95/8" annulus – press to 400 psi after several bbls of fresh water pumped. Bled off & repress with same results. Connect to 95/8" annulus with returns out 7". Able to circulate without problems w/ a total of 120 bbls fresh water. SD pump & re-connect to 7" to see if circ possible – pump down 7" and press up to 400 psi. RD pump – slight flow from 7" then ceased. MIRU Benterra #4. Removed WH and install well control valve. Made trip with 2½" OD x 18' aluminum tbg to btm at 1133' (5' RKB) = 7' below shot. Poured 5 gal ZONITE, wait & tag at 1128' = 5' fillup. Poured 5 gal ZONITE, wait & tag @ 1123' = 5' fillup. Poured 5 gal ZONITE, well began to flow water from surface pipe. Closed surface pipe & water began to rise in 7" csg. Removed WCV & install WH. SWI - built to 60 psi & began getting water through ground around WH, apparent leak in 95/8" csg. Open 95/8" x 7" riser valve to relieve press – well flowing small amount of water & gas. RU pump truck & vac truck. Circ down 95/8" x 7" annulus and out 7" csg with 100 bbl 10# brine in attempt to kill well - still had flow after circ was completed. Consulted w/ Chevron's Nathan Mouser and his experience was that this pressure would deplete if allowed to vent. Move in 250 bbl test tank and connect 7" csg to tank to vent press. SDON & weekend. Will monitor during weekend.

1/26/02

Well reported to be dead with no water or gas flow.

1/27/02

Well remained dead.

1/28/02

Well static with no flow. Disconnect line to tank. Check area for LEL/H₂S, OK. RU Key backhoe & dig out wellhead +/- 6' to inspect riser from 95/8" x 7" annulus. RU Key pump truck & pump into 7" csg & watch returns into cellar – no visible holes but water coming up around 95/8" csg from below excavation depth – riser piping from 95/8" x 7" annulus was OK. Well will be cemented, left cellar open to collect wellbore returns while cmtg. Dug workover pit & fenced pit & WH area. Left 95/8" x 7" annulus open to pit. SDON.

1/29/02

No flow from wellbore. RU Schlumberger cementer & Key transport & vac trucks. Pump 15 bbls fresh water down 7" csg & had returns to pit with some circ into cellar. Mix & pump +/- 345 sx Class C cmt (initial 200 sx cont'd 2% CaCl₂). Had good cmt returns to pit and to cellar. Displace cement inside 7" csg to approximately 600' with 24 bbls fresh water. Max displacement press = 300 psi. ISIP = 200 psi & held. SWI & WOC. T/Salt – Rustler, 95/8" csg shoe, and fresh water plugs in place @ 11:00 AM 1/29/02. RD Schlumberger and Key.

1/30/02

Monitor wellbore, static with no flow. Good, hard cement in cellar.

1/31/02

Wellbore static. Key backhoe covered cellar. MIRU Benterra #4. Removed WH & made trip with 3½" SB & tagged TOC @ 512'. Pushed 7" wiper rubber to 33'. Poured 7 cu ft ZONITE & filled 7" csg to surface. Top plug in place as of 1:00 PM 1/31/02. Left wellbore open to atmosphere. RD Benterra.

2/4/02

Check location – no problems.

2/20/02

Check location – no problems.

3/14/02

Check location – no problems.

3/18/02

Check location - add water to top of ZONITE cap; no bubbling.

4/3/02

Key Energy Services dug out cellar and cut casings and WH to 4' below GL. Welded on cap with ½" brass valve and installed dry hole marker w/ well identification. Dug out and cut off guywire anchors to 4' below GL. Backfilled all excavations. Turned over to ChevronTexaco for location clean up and NMOCD inspection. Final Report.