

Submit 3 Copies To Appropriate District
Office
District I
1625 N. French Dr., Hobbs, NM 88240
District II
1301 W. Grand Ave., Artesia, NM 88210
District III
1000 Rio Brazos Rd., Aztec, NM 87410
District IV
1220 S. St. Francis Dr., Santa Fe, NM
87505

State of New Mexico
1. geology, Minerals and Natural Resources

Form C-103
Revised March 25, 1999

OIL CONSERVATION DIVISION
1220 South St. Francis Dr.
Santa Fe, NM 87505

WELL API NO.
30-025-06276

5. Indicate Type of Lease
STATE ☒ FEE ☐

6. State Oil & Gas Lease No.

7. Lease Name or Unit Agreement Name:

Bell Ramsay (NCT-B)

8. Well No. 1

9. Pool name or Wildcat
Eumont; Yates-7 Rivers-Queen

SUNDRY NOTICES AND REPORTS ON WELLS

(DO NOT USE THIS FORM FOR PROPOSALS TO DRILL OR TO DEEPEN OR PLUG BACK TO A DIFFERENT RESERVOIR. USE "APPLICATION FOR PERMIT" (FORM C-101) FOR SUCH PROPOSALS.)

1. Type of Well:

Oil Well ☐ Gas Well ☒ Other

2. Name of Operator

Chevron U.S.A. Inc

3. Address of Operator

P. O. Box 1150, Midland, TX 79702

4. Well Location

Unit Letter M : 660 feet from the North line and 660 feet from the West line

Section 29

Township 20S

Range 37E

NMPM

County LEA

10. Elevation (Show whether DR, RKB, RT, GR, etc.)
3534' GR

11. Check Appropriate Box to Indicate Nature of Notice, Report or Other Data

NOTICE OF INTENTION TO:

PERFORM REMEDIAL WORK ☐ PLUG AND ABANDON ☒

TEMPORARILY ABANDON ☐ CHANGE PLANS ☐

PULL OR ALTER CASING ☐ MULTIPLE COMPLETION ☐

OTHER: ☐

SUBSEQUENT REPORT OF:

REMEDIAL WORK ☐ ALTERING CASING ☐

COMMENCE DRILLING OPNS. ☐ PLUG AND ABANDONMENT ☐

CASING TEST AND CEMENT JOB ☐

OTHER: ☐

12. Describe proposed or completed operations. (Clearly state all pertinent details, and give pertinent dates, including estimated date of starting any proposed work). SEE RULE 1103. For Multiple Completions: Attach wellbore diagram of proposed completion or recompletion.

Chevron proposes to P&A per the attached procedure.

This well is part of the New Mexico "P&A Pilot Project" conducted by Benterra Corporation to demonstrate the plugging and abandonment process using highly compressed sodium bentonite nodules as the plugging medium.

POST SUBSEQUENT P&A TO RBDMS
COMPLIANCE SCREEN

I hereby certify that the information above is true and complete to the best of my knowledge and belief.

SIGNATURE

J.K. Ripley

TITLE Regulatory OA

DATE 8/8/01

Type or print name J.K. Ripley

Telephone No. (915) 687-7148

(This space for State use)

APPROVED BY

TITLE

DATE

Conditions of approval, if any:

P & A PROCEDURE

Well Name: Bell Ramsey (NCT-B) #1
API Number: 30-025-06276
Coordinates: 660' FNL & 660' FWL Unit M
S - T - R: 29 - 20S - 37E
County / State: Lea County, NV
Drilled: 1937

Operator: Chevron
Field: Eumont
Date: 8/6/2001
By: DCD

Provide 24 hr Notification to NMOCD of Pending Operations
--

Note: If Chevron has already pulled tbq, proceed to Step 3.

1. MI PU. Hold pre-job safety mtg and check 7" csg and 95/8" x 7" annulus for press. RU PU.
2. Install BOP. POH & LD 3338' of tbq. Remove BOP, install WH equip & secure well. RD&RPU.
3. MI Benterra equip. Hold pre-job safety mtg and spot equipment. Check 7" csg and 95/8" x 7" annulus for pressure.
4. ND WH equip and install well control equip.
5. Check btm w/ SL. Record FL. Displace wellbore fluids w/ freshwater.
6. Insert 7" wiper plug (cored to allow fluid bypass) into csg and push to 2850' w/ slickline.
7. Surface pour 23 cu ft of ZONITE to set 100' btm plug from approx 2750 - 2850'. Set plug in stages, check w/ SL to assure bridges are not occurring and required plug height is achieved. Pour at rate that minimizes potential to bridge. After setting plug, add water as necessary to assure hydration of plug. Remove well control equip and NU WH to secure well.
8. Move off location and wait approximately 48 hours for plug to hydrate. Assure that an adequate fluid level to hydrate plug is maintained.
9. MI Benterra equip. Hold pre-job safety mtg and spot equipment. Check 7" csg and 95/8" x 7" annulus for press and install well control equip. Check top of plug w/ slickline and record FL.
10. Fill casing w/ freshwater to assure btm plug is holding and to prep for cutting 7" csg.
11. Push cored 7" wiper plug to 1200' w/ slickline. Cap w/ 10' ZONITE (2 cu ft), using precautions while pouring as in step 7. Tag top of plug w/ SL. Remove well control equip and secure well.
12. Move Benterra equip from location and MI PU and ancillary equip for csg cut & pull.
13. Hold pre-job safety mtg. Check csg and annulus for press and RUPJ & ancillary equip.
14. Cut 7" csg at 1176' = 50' below 95/8" shoe at 1126'. POH & LD 7" csg. RD&RPU and ancillary equip.
15. MI Benterra equip. Hold pre-job safety mtg and spot equipment. Check csg for pressure.

Bell Ramsay (NCT-B) #1

P&A Procedure

Page 2

16. Pour ZONITE and establish 130' plug from 1046 - 1176', which places plug 50' below the 95/8" shoe and extends it to 50' above the Rustler. Use pouring precautions as in Step 7. Volume of ZONITE is estimated to be approx 100 cu ft. If necessary, fill casing with freshwater.
17. Push cored 95/8" wiper plug to 350' w/ slickline.
18. Pour 43 cu ft of ZONITE and establish 100' plug from 250 - 350', across freshwater zone. Use precautions as in Step 7 while pouring ZONITE. If necessary, fill casing w/ freshwater.
19. Push cored 95/8" wiper plug to 85' w/ slickline = 50' below 16" shoe.
20. Fill casing w/ ZONITE to 3' below GL (36 cu ft). Use precautions as in Step 7 while pouring. If necessary, fill casing with freshwater.
21. Remove well control equip, secure WH and RD equip.
22. Allow 48 hours for ZONITE to hydrate, remove WH, cut off casings 3' below GL and cap wellbore.
23. Install dry hole marker stamped w/ required well identification, 4" OD x 4' above GL.
24. Remove all equip and cut deadmen below GL.
25. Turn over to Chevron for any surface remediation work.

Estimated ZONITE Requirements:

204 ft³

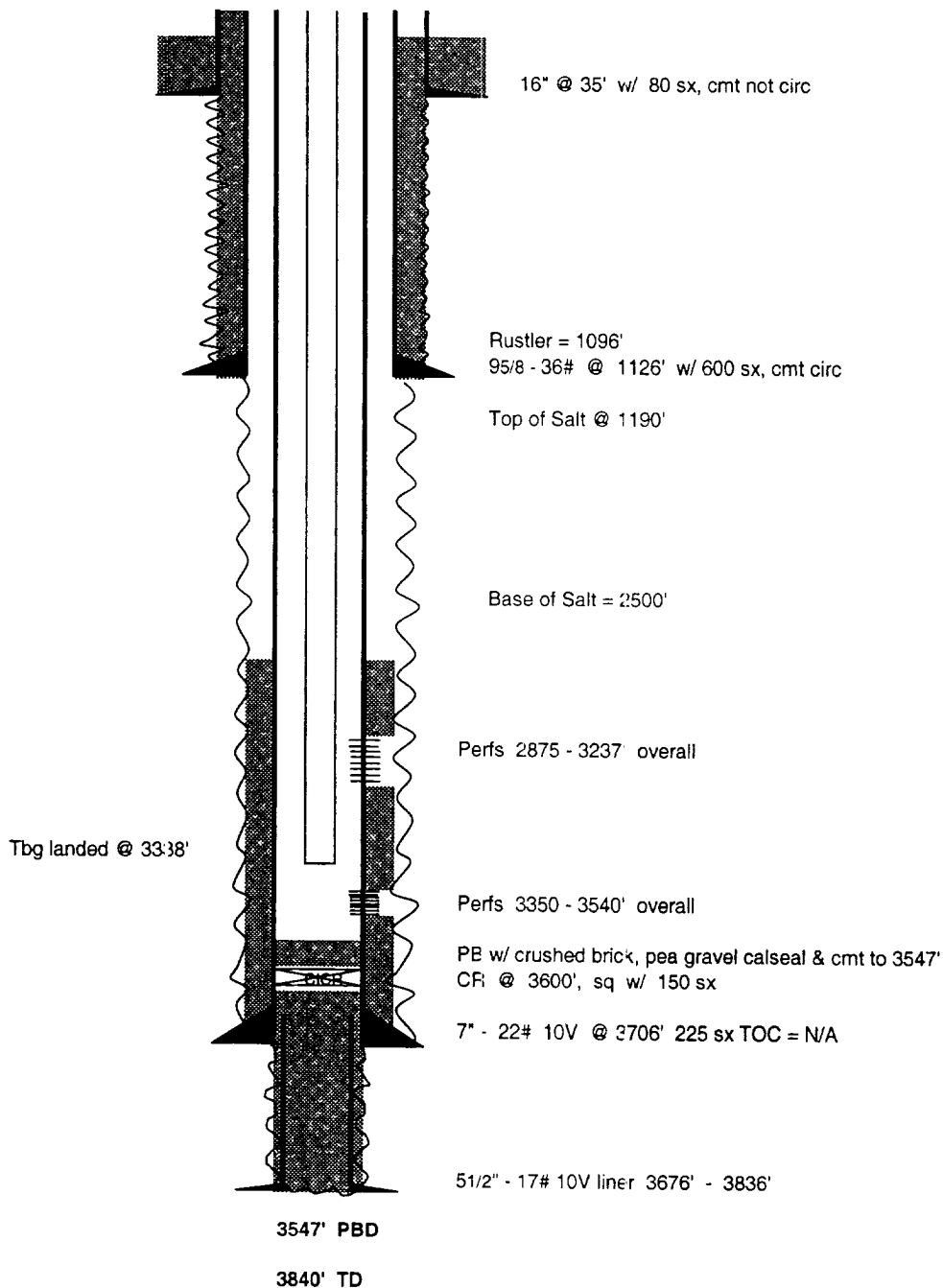
**WELL PLANNING SHEET
EXISTING CONFIGURATION**

Well Name: Bell Ramsey (NCT-E) #1
API Number: 30-025-06276
Coordinates: 660' FNL & 660' FNL Unit M
S - T - R: 29 - 20S - 37E
County / State: Lea County, NM
Drilled: 1937

Operator: Chevron
Field: Eumont
Date: 8/6/2001
By: DCD

RKB = N/A

Formation Tops	
Salt	1190'
Yates	2640'
7 Rivers	2910'
Queen	3343'



WELL PLANNING SHEET
Proposed P&A

Well Name: Bell Ramsey (NCT-B) #1
API Number: 30-025-06276
Coordinates: 660' FNL & 660' FWL Unit M
S - T - R: 29 - 20S - 37E
County / State: Lea County, NM
Drilled: 1937

Operator: Chevron
Field: Eumont
Date: 8/6/2001
By: DCD

RKB = N/A

Formation Tops	
Rustler	1096'
Salt	1190'
Base of Salt	2500'
Yates	2640'
7 Rivers	2910'
Queen	3343'

ZONITE Plugs	
3 - 85'	Top Plug
250 - 350'	FW
1046 - 1176'	Rustler / Shoe
2750 - 2850'	Perf Plug

