

P & A PROCEDURE

Well Name: Bell Ramsey (NCT-B) #1
API Number 30-025-06276
Coordinates: 660' FNL & 660' FWL Unit M
S - T - R 29 - 20S - 37E
County / State: Lea County, NM
Drilled: 1937

Operator: Chevron
Field: Eumont
Date: 8/6/2001
By: DCD

Provide 24 hr Notification to NMOCD of Pending Operations

1. MI PU. Hold pre-job safety mtg and check 7" csg and 95/8" x 7" annulus for press. RU PU.
2. Install BOP & POH and LD tbg. Remove BOP, install WH equip & secure well. RD&RPU.
3. MI Benterra equip. Hold pre-job safety mtg and spot equipment. Check 7" csg and 95/8" x 7" annulus for pressure.
4. ND WH equip and install well control equip.
5. Check btm w/ SL. Record FL. Displace wellbore fluids w/ freshwater.
6. Insert 7" wiper plug (cored to allow fluid bypass) into csg and push to 2850' w/ slickline.
7. Surface pour 23 cu ft of ZONITE to set 100' btm plug from approx 2750 - 2850'. Set plug in stages, check w/ SL to assure bridges are not occurring and required plug height is achieved. Pour at rate that minimizes potential to bridge. After setting plug, add water as necessary to assure hydration of plug. Remove well control equip and NU WH to secure well.
8. Move off location and wait minimum of 48 hours for plug to hydrate. Assure that an adequate fluid level to hydrate plug is maintained.
9. MI Benterra equip. Hold pre-job safety mtg and spot equipment. Check 7" csg and 95/8" x 7" annulus for press and install well control equip. Check top of plug w/ slickline and record FL.
10. Fill casing w/ freshwater to assure btm plug is holding and to prep for cavity shot.
11. Push cored 7" wiper plug to 1240' w/ slickline. Cap w/ 15' ZONITE (3 cu ft), using precautions while pouring as in step 7. Tag top of plug w/ SL.
12. Perform cavity shot (removal of 10' of casing) at top of salt = 1180 - 1190'. Check btm with SL after shot.
13. Pour ZONITE and establish plug from 1076 - 1190', which extends plug to 50' above 95/8" shoe. Volume of ZONITE estimated to be 25 - 30 cu ft. If necessary, fill casing with freshwater.
14. Push cored 7" wiper plug to 35' w/ slickline = 50' below 16" shoe.
15. Fill casing w/ ZONITE to 3' below GL (20 cu ft).
16. Remove well control equip, secure WH and RD equip.

Bell Ramsay (NCT-B) #1

P&A Procedure

Page 2

17. Allow 48 hours for ZONITE to hydrate, remove WH, cut off casings 3' below GL and cap wellbore.
18. Install dry hole marker stamped w/ required well identification, 4" OD x 4' above GL.
19. Remove all equip and cut deadmen below GL.
20. Turn over to Chevron for any surface remediation work.

Estimated ZONITE Requirements: **75 - 85 ft³**

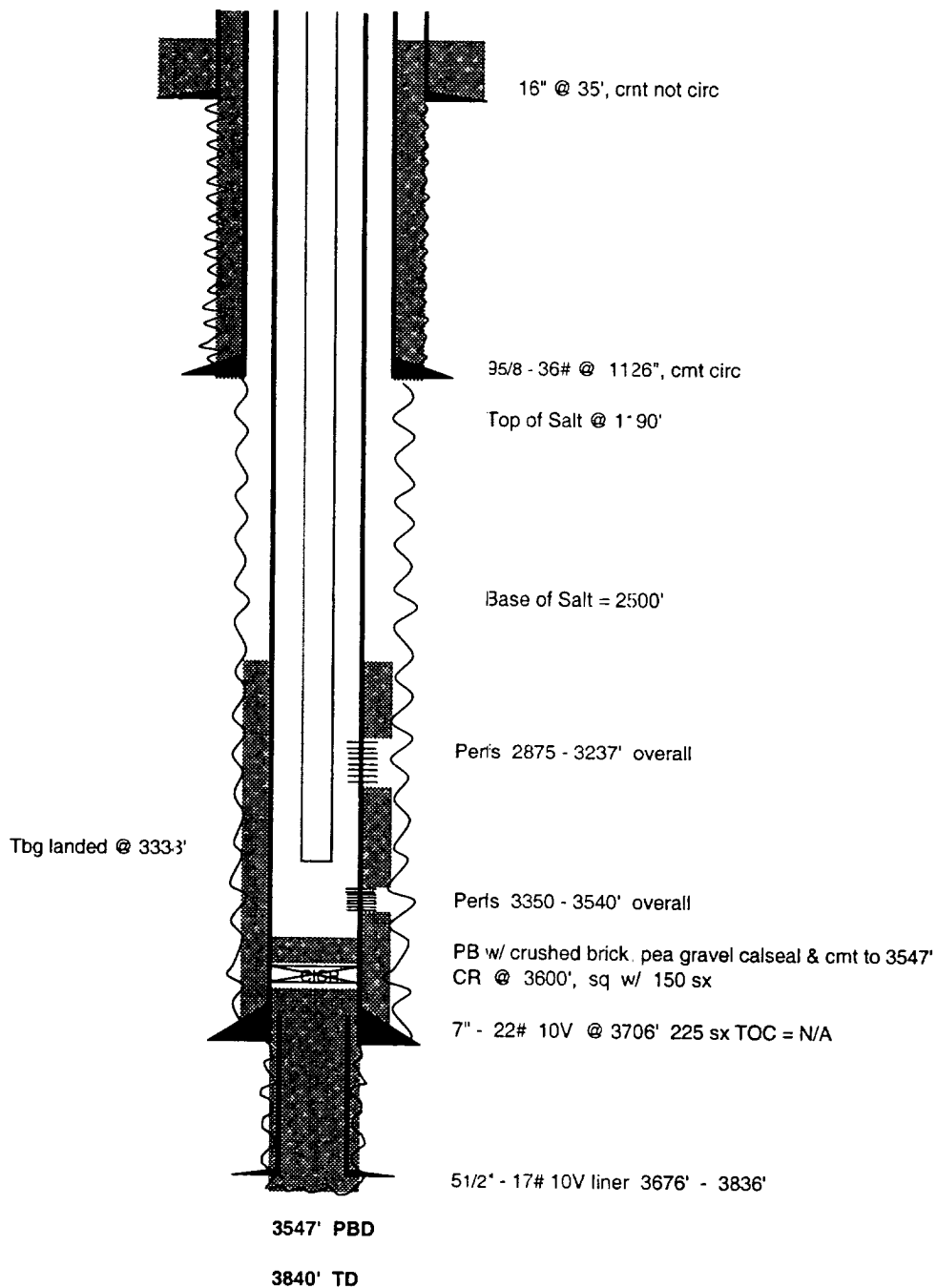
**WELL PLANNING SHEET
EXISTING CONFIGURATION**

Well Name: Bell Ramsey (NCT-B) #1
 API Number: 30-025-06276
 Coordinates: 660' FNL & 660' FVL Unit M
 S - T - R: 29 - 20S - 37E
 County / State: Lea County, NM
 Drilled: 1937

Operator: Chevron
 Field: Eumont
 Date: 8/6/2001
 By: DCD

RKB = N/A

Formation Tops	
Salt	1190'
Yates	2640'
7 Rivers	2910'
Queen	3343'



WELL PLANNING SHEET
Proposed P&A

Well Name: Bell Ramsey (NCT-B) #1
 API Number: 30-025-06276
 Coordinates: 660' FNL & 660' FWL Unit M
 S - T - R: 29 - 20S - 37E
 County / State: Lea County, NM
 Drilled: 1937

Operator: Chevron
 Field: Eumont
 Date: 8/6/2001
 By: DCD

RKB = N/A

Formation Tops	
Rustler	1096'
Salt	1190'
Base of Salt	2500'
Yates	2640'
7 Rivers	2910'
Queen	3343'

ZONITE Plugs	
3 - 85'	
1076 - 1190'	
2750 - 2850'	

