

NEW MEXICO OIL CONSERVATION COMMISSION

WELL LOCATION AND ACREAGE DEDICATION PLAT

30-025-06278
Form C-102
Supersedes C-128
Effective 1-1-65

All distances must be from the outer boundaries of the Section.

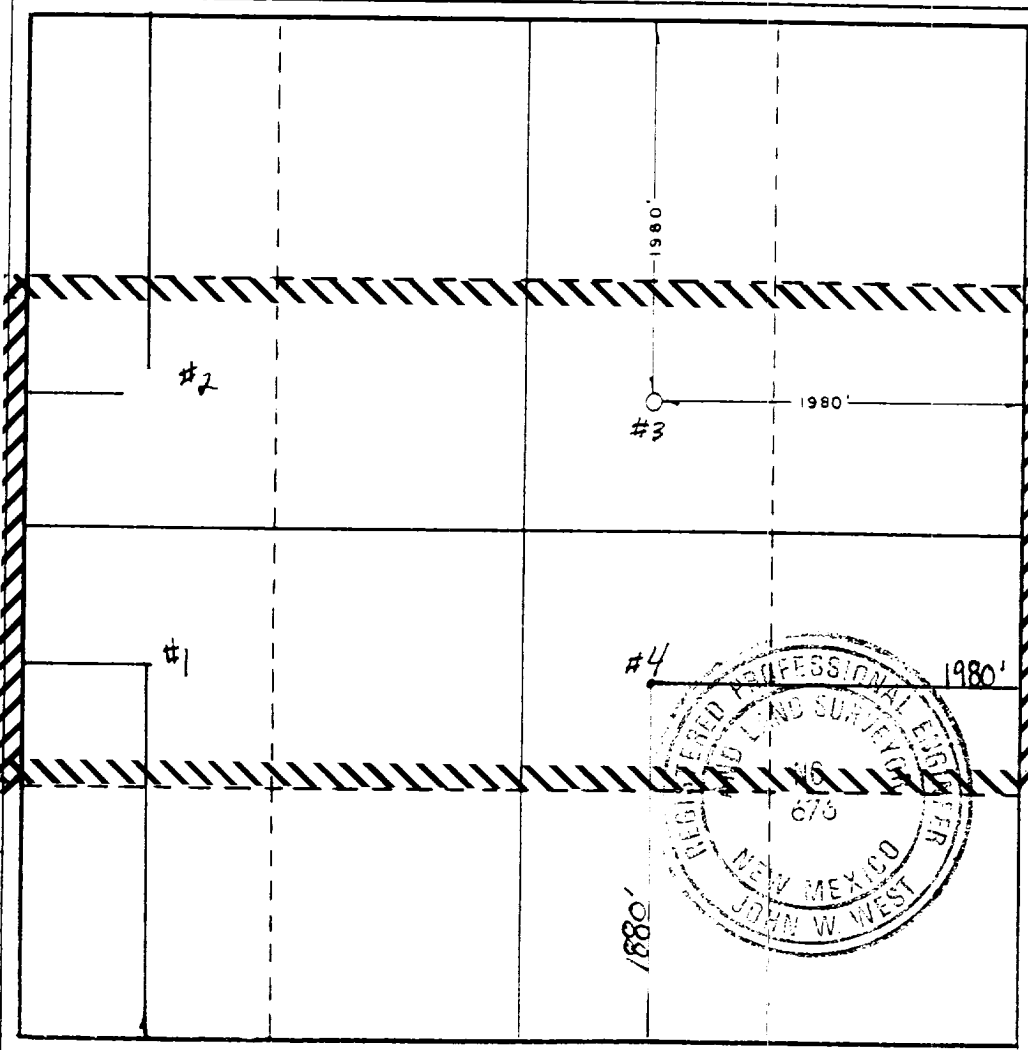
Operator CHEVRON USA, INC.			Lease A.B. REEVES		Well No. 2
Unit Letter E	Section 29	Township 20 SOUTH	Range 37 EAST	County LEA	
Actual Footage Location of Well:					
1980 feet from the North line and		660 feet from the West line			
Ground Level Elev. 3529	Producing Formation Queen/Penrose	Pool Eumont Gas		Dedicated Acreage: 320 Acres	

1. Outline the acreage dedicated to the subject well by colored pencil or hachure marks on the plat below.
2. If more than one lease is dedicated to the well, outline each and identify the ownership thereof (both as to working interest and royalty).
3. If more than one lease of different ownership is dedicated to the well, have the interests of all owners been consolidated by communitization, unitization, force-pooling, etc?

☐ Yes ☐ No If answer is "yes," type of consolidation _____

If answer is "no," list the owners and tract descriptions which have actually been consolidated. (Use reverse side of this form if necessary.) _____

No allowable will be assigned to the well until all interests have been consolidated (by communitization, unitization, forced-pooling, or otherwise) or until a non-standard unit, eliminating such interests, has been approved by the Commission.



CERTIFICATION

I hereby certify that the information contained herein is true and complete to the best of my knowledge and belief.

Name E.O. Doherty
Position Delg. T.H.
Company CHEVRON U.S.A. INC.
Date 10/1/90

I hereby certify that the well location shown on this plat was plotted from field notes of actual surveys made by me or under my supervision, and that the same is true and correct to the best of my knowledge and belief.

Date Surveyed OCTOBER 17, 1983
Registered Professional Engineer and/or Land Surveyor John W. West

Certificate No. JOHN W. WEST, 676	RONALD J. EIDSON, 3239
--	-------------------------------

