

| | | | | | | |
|-----------------------------------|-----|-----------|-------------------|-----------|-------|------|
| COUNTY | LEA | FIELD | Blinebry/Drinkard | STATE | NM | OWWO |
| TEXAS PACIFIC OIL CO. | | MAP | | | | |
| 1 Cone, S. E. | | CO-ORD | | | | |
| Sec. 26, T-21-S, R-37-E | | | | | | |
| 1980' fr S & E Lines of Sec. | | | | | | |
| Re-Spud 11-1-64; Re-Comp 11-14-64 | | CLASS | | EL | | |
| (Bli); 11-7-64 (D) | | FORMATION | DATUM | FORMATION | DATUM | |
| CSG & SX - TUBING | | | | | | |
| 13 3/8" 300' 300 | | | | | | |
| 8 5/8" 2811' 500 | | | | | | |
| 5 1/2" 6450' 300 | | | | | | |
| LOGS EL GR RA IND HC A | | | | | | |
| | | TD 6590' | | | | |

IP Blinebry Perfs 5700-5844' Flwd 72 BOPD + 18 BW. Pot. Based on 24 hr test thru 20/64" chk., TP 380#.

IP Drinkard OH 6450-6590' Flwd 273 BOPD. Pot. Based on 24 hr test thru 20/64" chk., TP 780#.

NOW TRIPLE COMPLETE W/TUBB GAS PERFS 6105-6258'

Distribution limited and publication prohibited by subscribers' agreement.
Reproduction rights reserved by Williams & Lee Scouting Service, Inc.

| CONT. | PROP DEPTH | TYPE |
|-------|------------|------|
| DATE | | |

12-7-64 F.R.C. 12-10-64; OWWO, OTD 6590'
Operator Orig Olsen Oils, Inc.
Orig comp from Drinkard OH 6450-6590' & plugged off.
Re-Comp from Tubb Gas perfs 6105-6258' & Blinebry Gas 5550-5675'.
TD 6590', COMPLETED.
Squeezed perfs 5550-5675' W/200 sx.
DO cement & BP @ 6348' to TD 6590.
Frac 30,000 gals oil + 30,000# sd. (OH 6450-6590')
Perf (Blinebry) @ 5700', 5706', 5719', 5728', 5733', 5744', 5775', 5789', 5800', 5815', 5823', 5836', 5844' W/1 SPI
Ac. 2000 gals.
Frac 12,800 gals oil + 12,800# sd. 5700-5844'.

**NEW MEXICO OIL CONSERVATION COMMISSION
WELL LOCATION AND ACREAGE DEDICATION PL. 7**

Form C-102
Supersedes C-128
Effective 1-1-65

All distances must be from the outer boundaries of the Section.

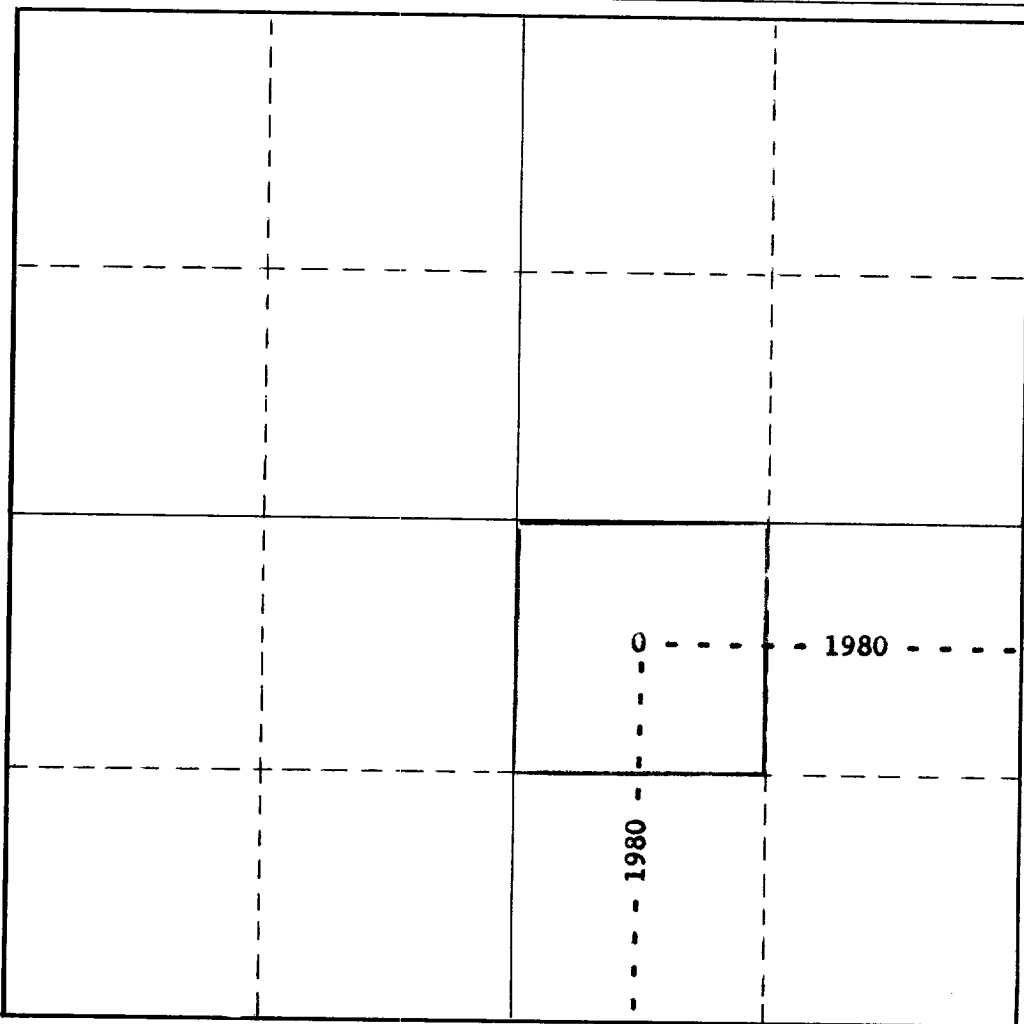
| | | | | | |
|---|--|--|-----------------------------|----------------------|---------------------------------------|
| Operator TEXAS PACIFIC OIL CO., INC. | | | Lease S. E. CONE. | | Well No. 1 |
| Unit Letter J | Section 26 | Township 21-S | Range 37-E | County Lea | |
| Actual Footage Location of Well: | | | | | |
| 1980 feet from the South line and | | 1980 feet from the East line | | | |
| Ground Level Elev. 3383' GR | Producing Formation Blinebry Gas | | Pool Blinebry Gas | | Dedicated Acreage: 40 Acres |

1. Outline the acreage dedicated to the subject well by colored pencil or hachure marks on the plat below.
2. If more than one lease is dedicated to the well, outline each and identify the ownership thereof (both as to working interest and royalty).
3. If more than one lease of different ownership is dedicated to the well, have the interests of all owners been consolidated by communitization, unitization, force-pooling, etc?

☐ Yes ☐ No If answer is "yes," type of consolidation _____

If answer is "no," list the owners and tract descriptions which have actually been consolidated. (Use reverse side of this form if necessary.) _____

No allowable will be assigned to the well until all interests have been consolidated (by communitization, unitization, forced-pooling, or otherwise) or until a non-standard unit, eliminating such interests, has been approved by the Commission.



CERTIFICATION

I hereby certify that the information contained herein is true and complete to the best of my knowledge and belief.

**Original Signed by
Sheldon Ward**

| |
|------------------------------------|
| Name |
| Sheldon Ward |
| Position |
| Area Superintendent |
| Company |
| TEXAS PACIFIC OIL CO., INC. |
| Date |
| 1-21-72 |

I hereby certify that the well location shown on this plat was plotted from field notes of actual surveys made by me or under my supervision, and that the same is true and correct to the best of my knowledge and belief.

| |
|---|
| Date Surveyed |
| Registered Professional Engineer and/or Land Surveyor |

Certificate No. _____



RECEIVED

JAN 31 1972

OIL CONSERVATION COMM.
FEDERAL RESERVE

NEW MEXICO OIL CONSERVATION COMMISSION
WELL LOCATION AND ACREAGE DEDICATION PLAT

Form C-102
Supersedes C-128
Effective 1-1-65

All distances must be from the outer boundaries of the Section.

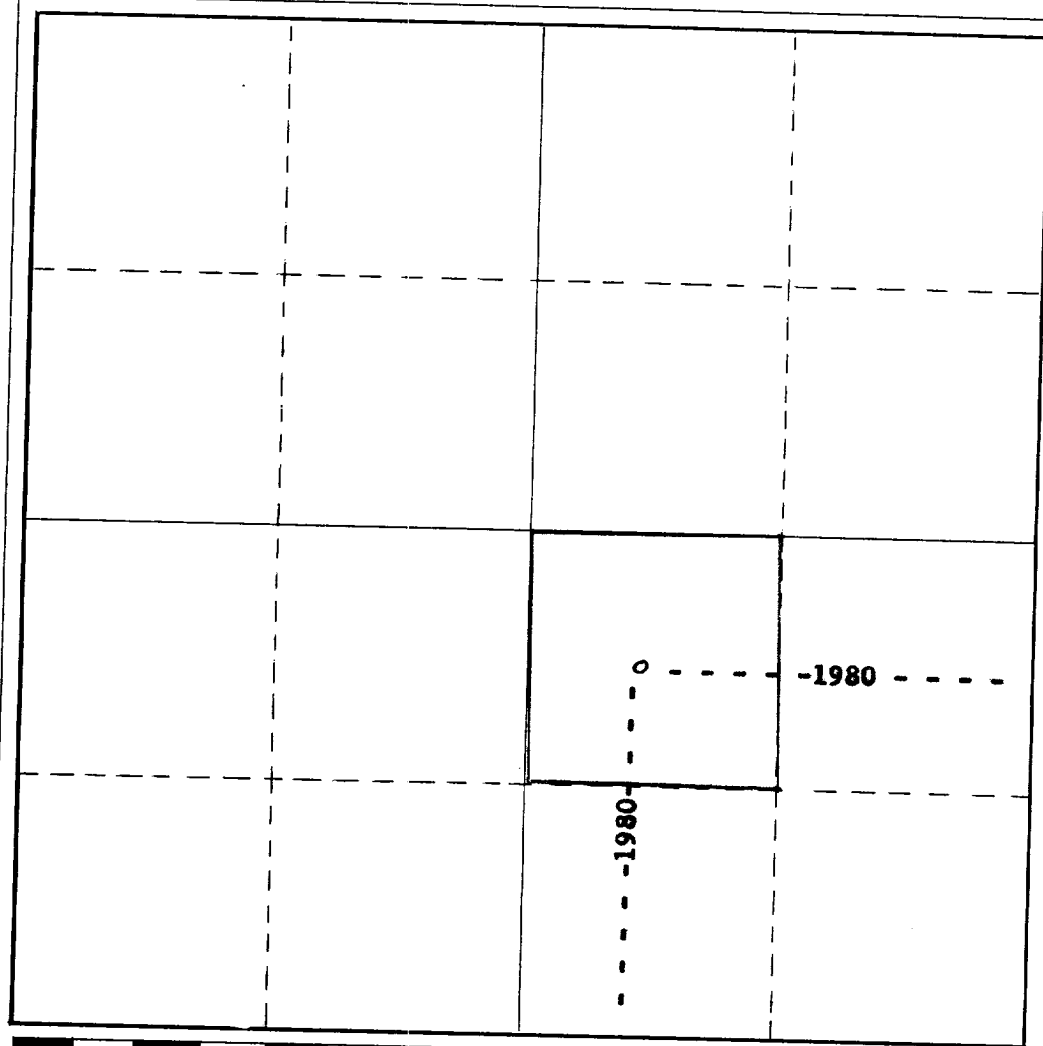
| | | | | | | | |
|---|--|--|----------------------------|---------------------------------|------------------------------------|-------|----------------------|
| Operator TEXAS PACIFIC OIL COMPANY | | | Lease S. E. CONE | | Date APR 10 11 42 AM '67 | | Well No. 1 |
| Unit Letter J | Section 26 | Township 21-S | Range 37-E | County Lea | | | |
| Actual Footage Location of Well: | | | | | | | |
| 1980 feet from the South line and | | 1980 feet from the East line | | | | | |
| Ground Level Elev. 3383' GR | Producing Formation Blinebry | | Pool Blinebry | Dedicated Acreage: 40 | | Acres | |

1. Outline the acreage dedicated to the subject well by colored pencil or hachure marks on the plat below.
2. If more than one lease is dedicated to the well, outline each and identify the ownership thereof (both as to working interest and royalty).
3. If more than one lease of different ownership is dedicated to the well, have the interests of all owners been consolidated by communitization, unitization, force-pooling, etc?

☐ Yes ☐ No If answer is "yes," type of consolidation _____

If answer is "no," list the owners and tract descriptions which have actually been consolidated. (Use reverse side of this form if necessary.) _____

No allowable will be assigned to the well until all interests have been consolidated (by communitization, unitization, forced-pooling, or otherwise) or until a non-standard unit, eliminating such interests, has been approved by the Commission.



CERTIFICATION

I hereby certify that the information contained herein is true and complete to the best of my knowledge and belief.

Name **Original Signed by**

Sheldon

Position

Area Superintendent

Company

TEXAS PACIFIC OIL COMPANY

Date

4-13-67

I hereby certify that the well location shown on this plat was plotted from field notes of actual surveys made by me or under my supervision, and that the same is true and correct to the best of my knowledge and belief.

Date Surveyed

Registered Professional Engineer and/or Land Surveyor

Certificate No.

**NEW MEXICO OIL CONSERVATION COMMISSION
WELL LOCATION AND ACREAGE DEDICATION PLAT**

Form C-102
Supersedes C-128
Effective 1-1-65

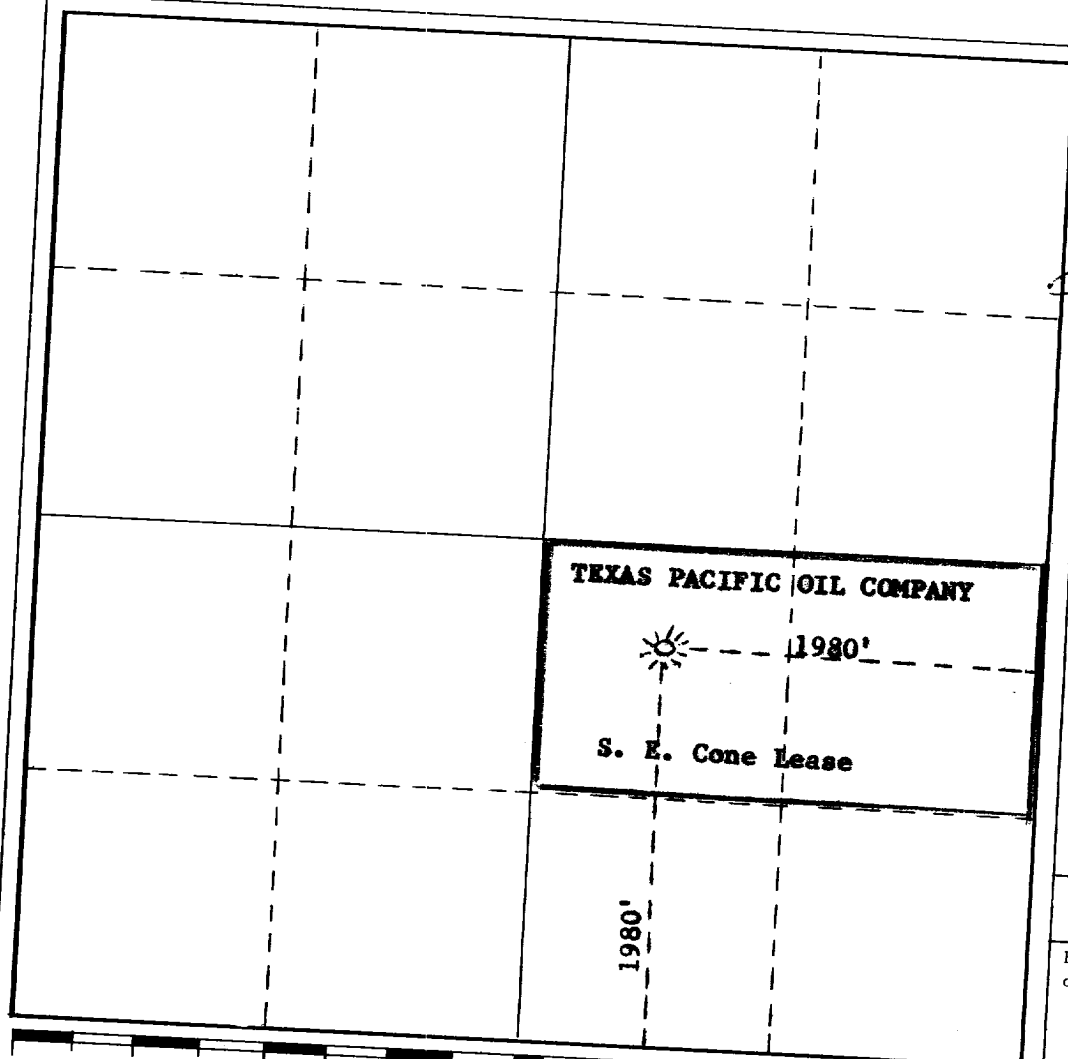
All distances must be from the outer boundaries of the Section.

| | | | | | | | |
|--|--|-------------------------|-----------------------------|----------------------------|----------------------------|---------------------------------------|--|
| Operator TEXAS PACIFIC OIL COMPANY | | | | Lease S. E. Cone | | Well No. 1 | |
| Unit Letter J | Section 26 | Township 21-S | Range 37-E | County Lea | Date SEP 13 1966 | | |
| Actual Footage Location of Well: 1980 feet from the South line and 1980 feet from the East line | | | | | | | |
| Ground Level Elev. 3383' | Producing Formation Blinebry | | Pool Blinebry Gas | | | Dedicated Acreage: 80 Acres | |

1. Outline the acreage dedicated to the subject well by colored pencil or hachure marks on the plat below.
2. If more than one lease is dedicated to the well, outline each and identify the ownership thereof (both as to working interest and royalty).
3. If more than one lease of different ownership is dedicated to the well, have the interests of all owners been consolidated by communitization, unitization, force-pooling, etc?
☐ Yes ☐ No If answer is "yes," type of consolidation _____

If answer is "no," list the owners and tract descriptions which have actually been consolidated. (Use reverse side of this form if necessary.) _____

No allowable will be assigned to the well until all interests have been consolidated (by communitization, unitization, forced-pooling, or otherwise) or until a non-standard unit, eliminating such interests, has been approved by the Commission.



CERTIFICATION

I hereby certify that the information contained herein is true and complete to the best of my knowledge and belief.

Name

Sheldon Ward

Position

Area Superintendent

Company

Texas Pacific Oil Company

Date

September 13, 1966

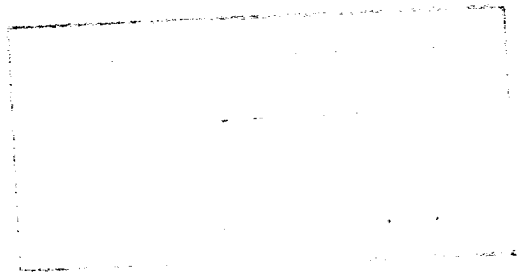
I hereby certify that the well location shown on this plat was plotted from field notes of actual surveys made by me or under my supervision, and that the same is true and correct to the best of my knowledge and belief.

Date Surveyed

Registered Professional Engineer
and/or Land Surveyor

Certificate No.

6



Gas Well Plat

Name of Producing Formation Tubb Pool Tubb

No. Acres Dedicated to the Well 80

R. Olsen Oil Co.

S.E. Cone Lease

I hereby certify that the information given above is true and complete to the best of my knowledge.

Name Carson Lanning
Position Petroleum Engineer
Representing B. Olsen Oil Company
Address Box 691 Jal, New Mexico

(over)

INSTRUCTIONS

1. Is this gas well a dual completion? Yes No
2. If the answer to Question 1 is Yes, are there any other
dually completed wells within the dedicated acreage?
Yes No

A separate plat must be filed for each gas well, outlining the area dedicated to such well and showing the location of all other wells (oil and gas) within the outlined area.

Mail in duplicate to the district office for the district in which the well is located.

NEW MEXICO
OIL CONSERVATION COMMISSION

Gas Well Plat

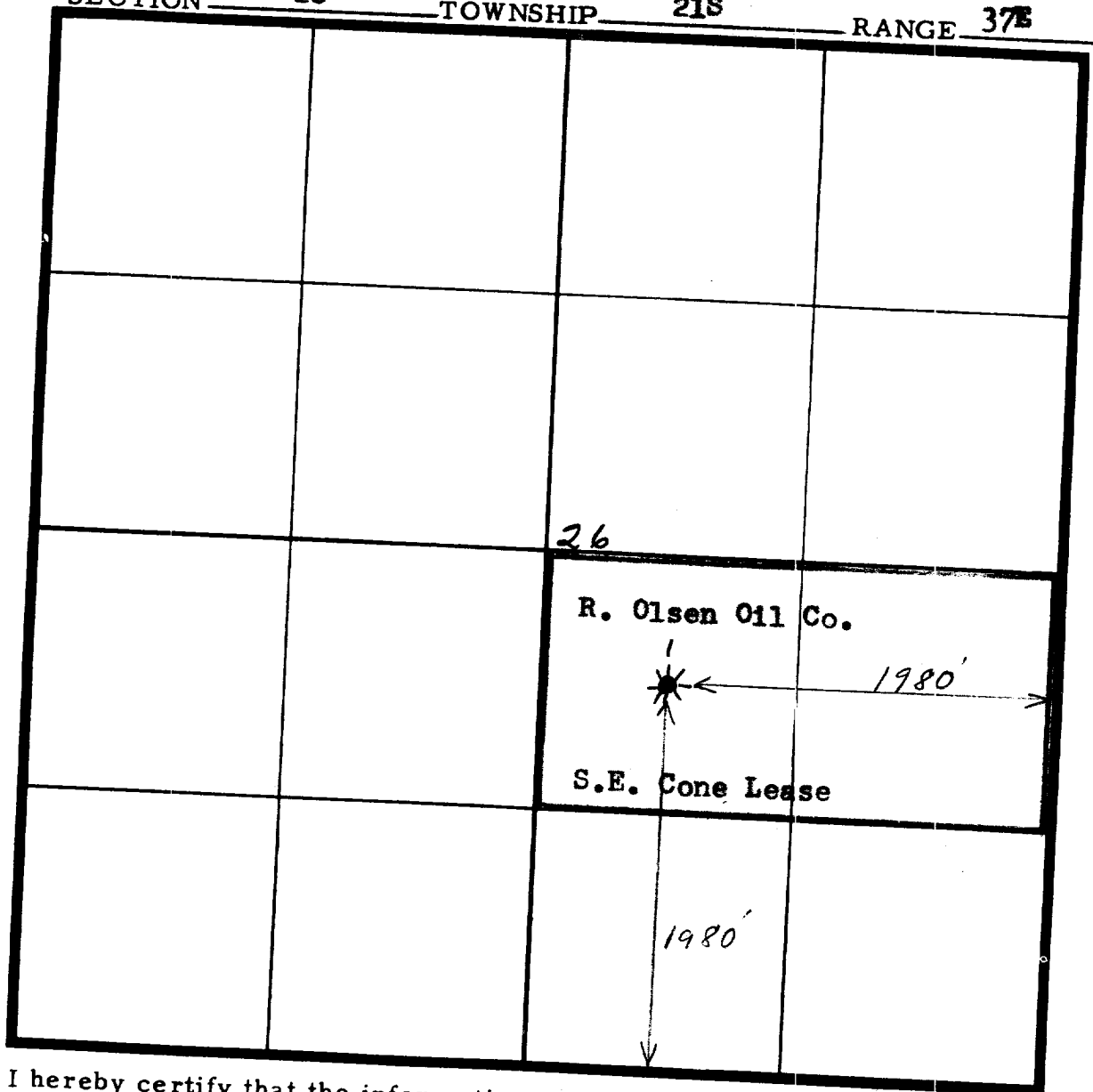
Date December 1954

R. Olsen Oil Co. S.E. Cone 1
Operator Lease Well No.

Name of Producing Formation Blinebry Pool Blinebry

No. Acres Dedicated to the Well 80

SECTION 26 TOWNSHIP 21S RANGE 37E



I hereby certify that the information given above is true and complete to the best of my knowledge.

Name Arthur Cumming
Position Petroleum Engineer
Representing R. Olsen Oil Co.
Address Box 691 Jal N.M.

(over)

INSTRUCTIONS

1. Is this gas well a dual completion? Yes ☒ No ☐
2. If the answer to Question 1 is Yes, are there any other
dually completed wells within the dedicated acreage?
Yes ☐ No ☒

A separate plat must be filed for each gas well, outlining the area dedicated to such well and showing the location of all other wells (oil and gas) within the outlined area.

Mail in duplicate to the district office for the district in which the well is located.