



STATE OF NEW MEXICO
ENERGY AND MINERALS DEPARTMENT
OIL CONSERVATION DIVISION
HOBBS DISTRICT OFFICE

GARREY CARRUTHERS
GOVERNOR

11-14-90

POST OFFICE BOX 1980
HOBBS, NEW MEXICO 88241-1980
(505) 393-6161

OIL CONSERVATION DIVISION
P. O. BOX 2088
SANTA FE, NEW MEXICO 87501

NSP-1512
NSP-1612

RE: Proposed:

MC _____
DHC _____
NSL _____
NSP X _____
SWD _____
WFX _____
PMX _____

Gentlemen:

I have examined the application for the:

Chevron USA Inc. Eunice King 19-C + 24-E 28-21-37
Operator Lease & Well No. Unit S-T-R

and my recommendations are as follows:

OK

Yours very truly,

Jerry Sexton
Jerry Sexton
Supervisor, District 1

/ed



Chevron U.S.A. Inc.
P.O. Box 1150, Midland, TX 79702

November 9, 1990

ADMINISTRATIVE APPLICATION FOR
NON-STANDARD GAS PRORATION UNIT,
AND SIMULTANEOUS DEDICATION
BLINEBRY OIL AND GAS POOL
660' FNL AND 1980' FWL
SECTION 28, T-21-S, R-37-E, NMPM
LEA COUNTY, NEW MEXICO

State Of New Mexico
Energy, Minerals & Natural Resources Dept.
Oil Conservation Division
P. O. Box 2088
Santa Fe, New Mexico 87504

Attention: Mr. William J. LeMay - Director

Gentlemen:

Chevron U.S.A. Inc. respectfully requests administrative approval for a 120-acre Non-Standard Gas Proration Unit and Simultaneous Dedication in the Blinebry Oil and Gas Pool, comprising the W/2 NW/4 and NE/4 NW/4, of Section 28, T-21-S, R-37-E, Lea County, New Mexico, to be assigned to Chevron's Eunice King Well Nos. 19 & 24. In support thereof, Chevron U.S.A. Inc. states the following facts:

- 1) That NMOCD Order No. R-5264 effective September 1, 1976, authorized the simultaneous dedication of a 160-acre non-standard gas proration unit comprising the S/2 NW/4 and W/2 NE/4 of Section 28, T-21-S, R-37-E, Blinebry Oil and Gas Pool, Lea County, New Mexico, to Chevron's Eunice King Well No.s 15 and 24, located in Units F and E of Section 28, respectively.
- 2) That Chevron's Eunice King Well No. 10, located in Unit B of Section 28, T-21-S, R-37-E, has been recompleted as a Blinebry oil well and has been assigned an allowable dedicated to 40-acres com-

prising the NW/4 NE/4 of Section 28. This reduces the NSP unit for Well No.s 15 and 24 to 120 acres.

- 3) That Chevron's Eunice King Well No. 15, located in Unit F of Section 28, T-21-S, R-37-E, was reclassified to an oil well effective June 1, 1987, with an allowable dedicated to 40-acres comprising the SE/4 NW/4 of Section 28. This further reduces the NSP unit acreage to where there is only 40-acres of contiguous acreage remaining for Well No. 24.
- 4) As a result of adding perforations in the Blinebry pay it is necessary to reclassify Chevron's Eunice King Well No. 19 from a Blinebry Oil and Gas well to a Blinebry Gas well. This well is be located 660 feet FNL, and 1980 feet FWL of Section 28, T-21-S, R-37-E, Lea County, New Mexico.

It is now proposed to combine the 40-acres already dedicated to our Eunice King Well No. 24 (NSP-Order No. R-8170) occupying the SW/4 NW/4 of Section 28 with an additional currently undedicated 80-acres comprising N/2 NW/4 of Section 28 incorporating Eunice King Well No. 19. This 120-acre gas proration unit will comprise the W/2 NW/4 and NE/4 NW/4 of Section 28 and be simultaneously dedicated to both Eunice King Well Nos. 19 & 24.

- 5) The proposed Non-Standard Gas Proration Unit will meet the requirements for a Non-Standard Gas Proration Unit as follows:
 - a. The proposed unit consists of 120-acres that are contiguous.
 - b. The proposed unit lies wholly within a single government section in the Blinebry Oil and Gas pool.
 - c. The entire proposed unit may reasonably be presumed to be productive of gas from the Blinebry Oil and Gas Pool.
 - d. A copy of this application will be sent by certified mail to all offset operators and operators owning interests in the proposed unit's boundary and shall serve as notification.

In support of this application, attached is a plat outlining the proposed Non-Standard Unit, the acreage to be simultaneously dedicated to the proposed unit, and showing all offset properties and wells.

In view of the facts submitted, Chevron U.S.A. Inc. requests

that administrative approval of the subject 120-acre Non-Standard Gas Proration Unit be granted.

Sincerely,

Alan W. Bohling
A. W. BOHLING

dmb
Attachments

CHEVRON U.S.A. INC.
Eunice King Lease

Application For Non-Standard
Gas Proration Unit
and
Simultaneous Dedication of Acreage
Blinebry Oil & Gas
660' FNL and 1980' FWL
Section 28, T21S, R37E
Lea County, New Mexico

OFFSET OPERATORS

American Exploration Co.
2100 Republic Bank Center
Houston, Texas 77002

ARCO Oil and Gas Co.
P.O. Box 1610
Midland, Texas 79702

Conoco
P. O. Box 1959
Midland, Texas 79702

Marathon Oil Company
P. O. Box 552
Midland, Texas 79702

Mobil
P. O. Box 1800
Hobbs, New Mexico 88240

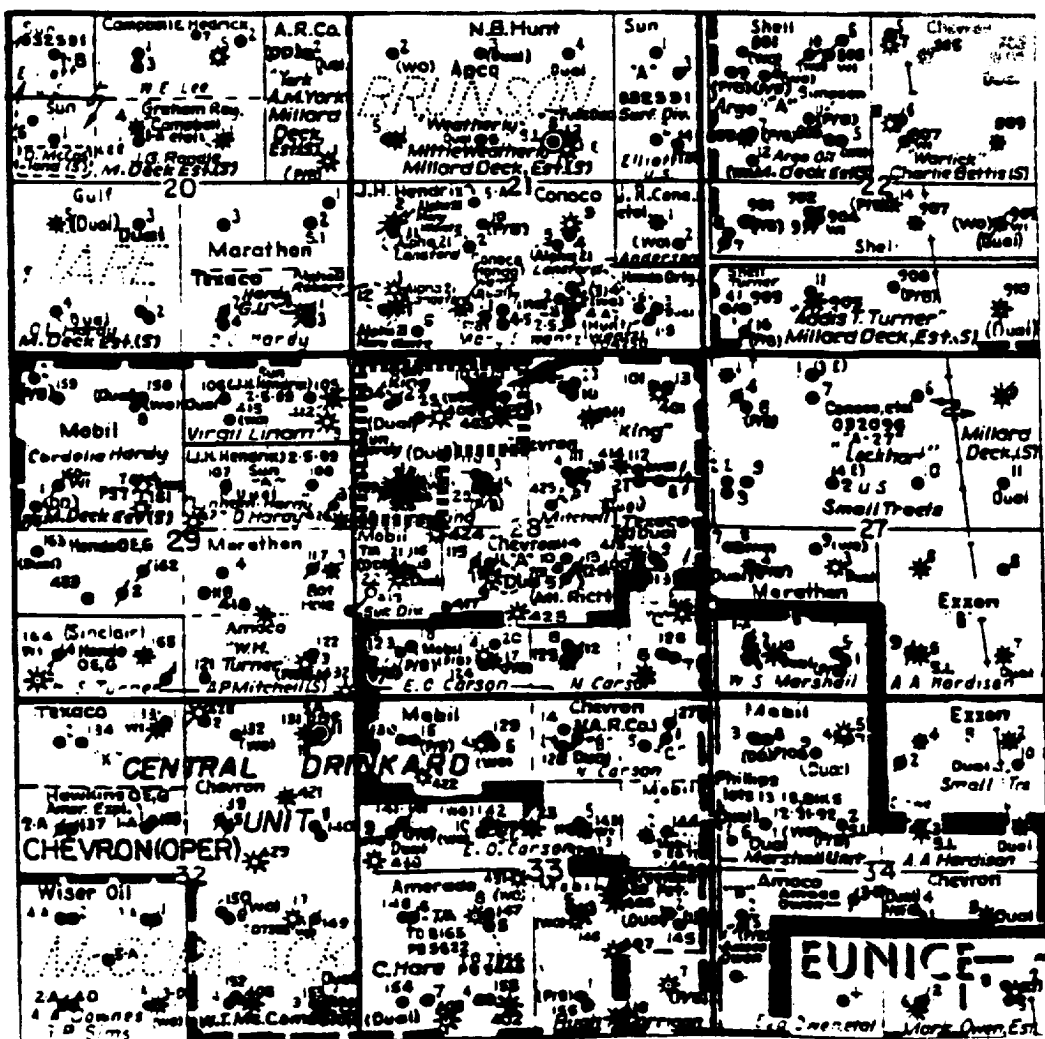
J. H. Hendrix
223 W. Wall
Midland, Texas 79701

Hondo Drilling Inc.
Drawer 2516
Midland, Texas 79702

Texaco Producing Co.
P. O. Box 3109
Midland, Texas 79702

Oryx Energy Co.
P. O. Box 1861
Midland, Texas 79702

Application For Non-Standard
Gas Proration Unit
and
Simultaneous Dedication of Acreage
Blinebry Oil & Gas
660' FNL and 1980' FWL
Section 28, T21S, R37E
Lea County, New Mexico



Submit to Appropriate
District Office
State Lease - 4 copies
Fee Lease - 3 copies

State of New Mexico
Energy, Minerals and Natural Resources Department

Form C-102
Revised 1-1-89

OIL CONSERVATION DIVISION

P.O. Box 2088

Santa Fe, New Mexico 87504-2088

DISTRICT I

P.O. Box 1980, Hobbs, NM 88240

DISTRICT II

P.O. Drawer DD, Artesia, NM 88210

DISTRICT III

1000 Rio Brazos Rd., Aztec, NM 87410

WELL LOCATION AND ACREAGE DEDICATION PLAT

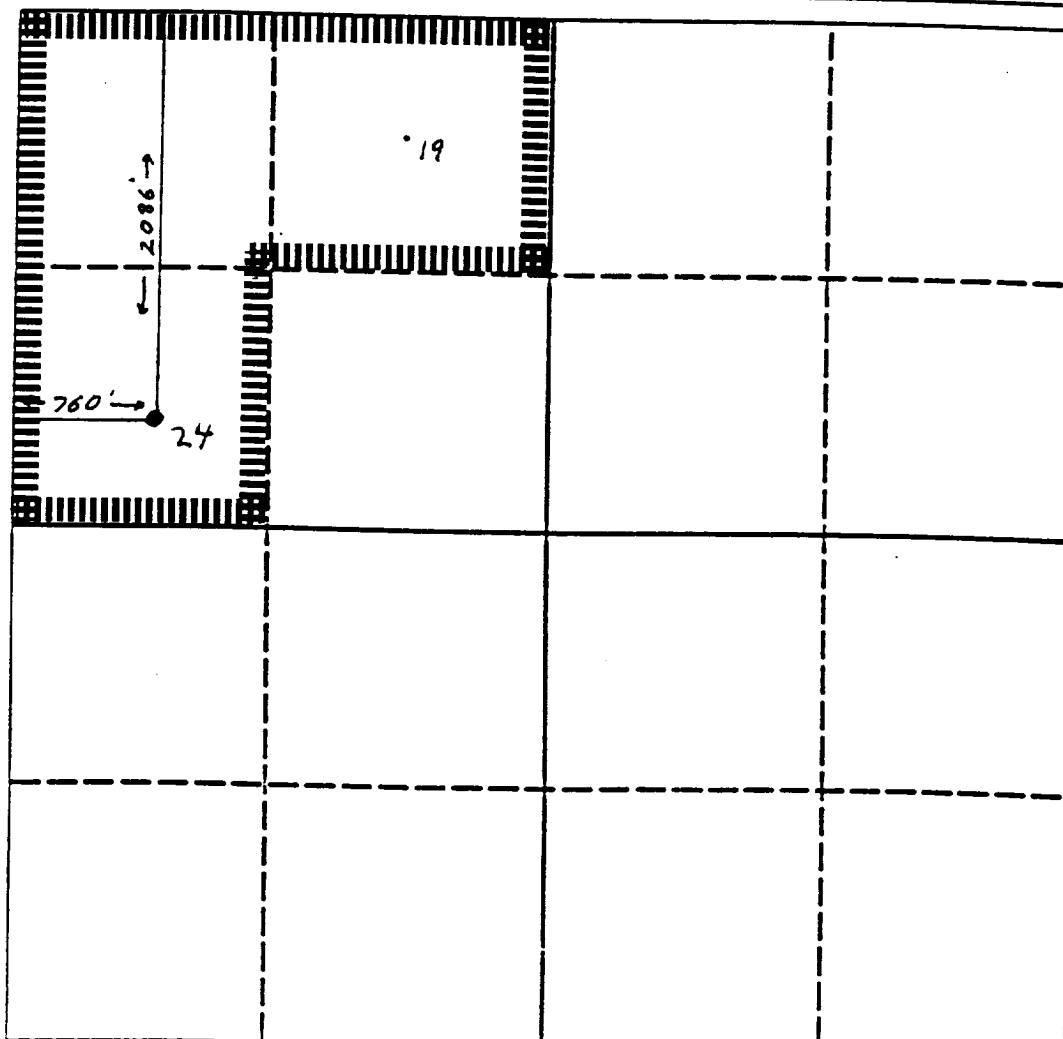
All Distances must be from the outer boundaries of the section

Operator Chevron U.S.A Inc.			Lease Eunice King		Well No. 24
Unit Letter E	Section 28	Township 21S	Range 37E	County Lea	
Actual Footage Location of Well: 2086 feet from the North line and 760 feet from the West line					
Ground level Elev. 3470'	Producing Formation Blinebry		Pool Blinebry Oil and Gas		Dedicated Acreage: 120 Acres

1. Outline the acreage dedicated to the subject well by colored pencil or hatchure marks on the plat below.
2. If more than one lease is dedicated to the well, outline each and identify the ownership thereof (both as to working interest and royalty).
3. If more than one lease of different ownership is dedicated to the well, have the interest of all owners been consolidated by communitization, unitization, force-pooling, etc.?
☐ Yes ☐ No If answer is "yes" type of consolidation _____

If answer is "no" list the owners and tract descriptions which have actually been consolidated. (Use reverse side of this form if necessary.) _____

No allowable will be assigned to the well until all interests have been consolidated (by communitization, unitization, forced-pooling, or otherwise) or until a non-standard unit, eliminating such interest, has been approved by the Division.



OPERATOR CERTIFICATION

I hereby certify that the information contained herein is true and complete to the best of my knowledge and belief.

Signature

David Bohon

Printed Name

De M. Bohon

Position

Technical Assistant

Company

Chevron U.S.A. Inc.

Date

11/12/90

SURVEYOR CERTIFICATION

I hereby certify that the well location shown on this plat was plotted from field notes of actual surveys made by me or under my supervision, and that the same is true and correct to the best of my knowledge and belief.

Date Surveyed

Signature & Seal of
Professional Surveyor

Certificate No.

0 330 660 990 1320 1650 1980 2310 2640 2000 1500 1000 500 0