

COUNTY LEA Blinebry
 OPR ARCO OIL & CO
 NO 2 LEASE Cone, 11B
 Sec 26, T21S, R77E
 660 FSL, 1980 P.D. of Sec
 1 mi E/Eunice
 RE SPD 9-25-79 RE CMP 8-9-81

WELL	CLASS	INIT	DX	FIN	DO	CSF	COB
FORMATION							
DATUM							
FORMATION							
INIT							
6583 (TUBB)							

IP (Blinebry) Perfs 5476-5637 P 14 BOPD + 13 BW, Perf based on 24 hr test. GOR 714; gty (NR)

3388 DF

F.R.C. 2-6-82 OWWO
 PD 6546 WO (Blinebry)
 (Orig. Repollo Oil Co., map 9-3-41 thru
 (Drinkard) Perfs 6465-6576. OTD 6583; OWWO
 & re- 5-11-64 dual thru (Blinebry) Perfs
 5715-5846 and thru (Drinkard) Perfs 6413-6546
 OTD 6583, OPB 6548)
 TD 6548, OPD 6548; Complete
 Perf (Drinkard) @ 6384, 6388, 6400, 6415, 6419,
 6436, 6442 w/1 SPF
 Acid (6384-6548) 2000 gals
 Frac (6384-6548) 16,000 gals + 8000# sd
 Perf (Blinebry) @ 5476, 5483, 5494, 5502, 5510,
 5522, 5532, 5542, 5548, 5556, 5570, 5580, 5617,
 5630, 5637 w/1 SPI
 Acid (5476-5637) 4000 gals
 Frac (5476-5637) 32,000 gals + 12,000# sd
 Acid (5476-6548)

2-1-42 19

LEA
ARCO OIL & GAS CO.

Blinch
2 Cone, J. R. "B"
Sec 26, T21S, R37E

NM
Page #2

2-1-82 Continued
 RBP @ 5680
 Acid (5476-5637) 5000 gals
2-6-82 COMPLETION ISSUED

2-1-42 NM
IC 30-025-70081-82

OIL CONSERVATION DIVISION

STATE OF NEW MEXICO
ENERGY AND MINERALS DEPARTMENT

P. O. BOX 2088
SANTA FE, NEW MEXICO 87501

Form C-102
Revised 10-1-78

All distances must be from the outer boundaries of the Section.

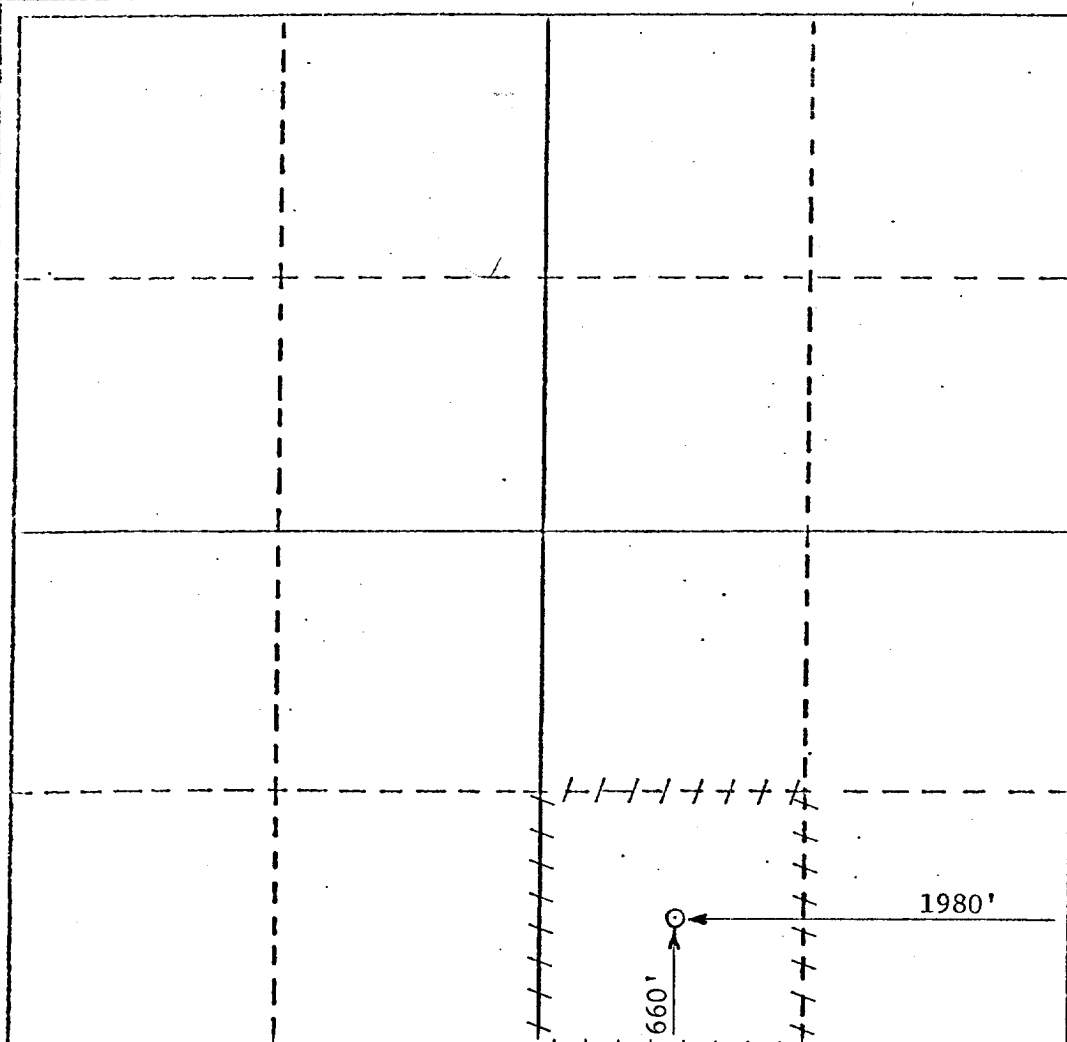
Operator ARCO Oil and Gas Company			Lease J. R. Cone "B"		Well No. 2
Division of Atlantic Richfield Co.					
Unit Letter 0	Section 26	Township 21S	Range 37E	County Lea	
Actual Postage Location of Well:					
660 feet from the South		line and 1980		feet from the East line	
Ground Level Elev. 3376'	Producing Formation Blinebry Oil	Pool Blinebry Oil & Gas		Dedicated Acreage: 40 Acres	

1. Outline the acreage dedicated to the subject well by colored pencil or hatchure marks on the plat below.
2. If more than one lease is dedicated to the well, outline each and identify the ownership thereof (both as to working interest and royalty).
3. If more than one lease of different ownership is dedicated to the well, have the interests of all owners been consolidated by communitization, unitization, force-pooling, etc?

☐ Yes ☐ No If answer is "yes," type of consolidation _____

If answer is "no," list the owners and tract descriptions which have actually been consolidated. (Use reverse side of this form if necessary.) _____

No allowable will be assigned to the well until all interests have been consolidated (by communitization, unitization, forced-pooling, or otherwise) or until a non-standard unit, eliminating such interests, has been approved by the Division.



CERTIFICATION

I hereby certify that the information contained herein is true and complete to the best of my knowledge and belief.

Name *D. L. Shackelford*
Position Engrg Tech Spec
Company **ARCO Oil and Gas Co.**
Div of Atlantic Richfield Co.
Date **7/14/81**

I hereby certify that the well location shown on this plat was plotted from field notes of actual surveys made by me or under my supervision, and that the same is true and correct to the best of my knowledge and belief.

Date Surveyed _____

Registered Professional Engineer and/or Land Surveyor

Certificate No. _____

NEW MEXICO OIL CONSERVATION COMMISSION
WELL LOCATION AND ACREAGE DEDICATION PLAT

Form C-102
 Supersedes C-128
 Effective 1-1-65

All distances must be from the outer boundaries of the Section.

Operator ARCO Oil and Gas Company			Lease J. R. Cone "B"		Well No. 2
Unit Letter 0	Section 26	Township 21-S	Range 37-E	County Lea	
Actual Footage Location of Well: 660 feet from the South line and 1980 feet from the East line					
Ground Level Elev. 3376'	Producing Formation Blinebry Gas		Pool Blinebry		Dedicated Acreage: 120 Acres

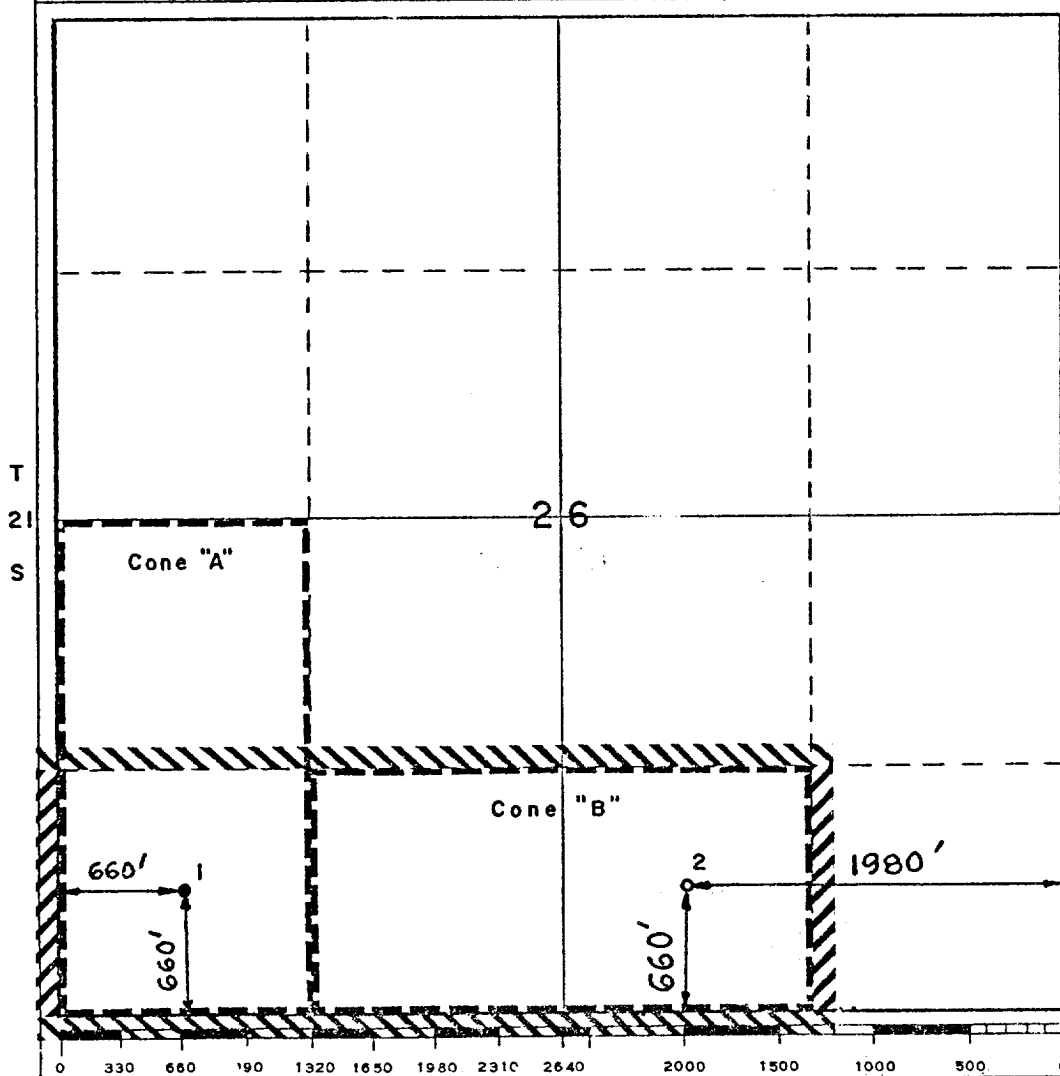
1. Outline the acreage dedicated to the subject well by colored pencil or hachure marks on the plat below.
2. If more than one lease is dedicated to the well, outline each and identify the ownership thereof (both as to working interest and royalty). Attached to the non-standard unit application dated April 22, 1976, and approved by Order NSP-1025 dated May 20, 1976.
3. If more than one lease of different ownership is dedicated to the well, have the interests of all owners been consolidated by communitization, unitization, force-pooling, etc?

☒ Yes ☐ No If answer is "yes," type of consolidation Unitization

If answer is "no," list the owners and tract descriptions which have actually been consolidated. (Use reverse side of this form if necessary.) _____

No allowable will be assigned to the well until all interests have been consolidated (by communitization, unitization, forced-pooling, or otherwise) or until a non-standard unit, eliminating such interests, has been approved by the Commission.

R 37 E



CERTIFICATION

I hereby certify that the information contained herein is true and complete to the best of my knowledge and belief.

Huan Pham

Name
Huan Pham
 Position
Operations Engineer
 Company
ARCO Oil & Gas Company
 Date
June 14, 1979

I hereby certify that the well location shown on this plat was plotted from field notes of actual surveys made by me or under my supervision, and that the same is true and correct to the best of my knowledge and belief.

Date Surveyed
 Registered Professional Engineer and/or Land Surveyor

Certificate No.

COUNTY LEA FIELD Blinebry STATE N.M. OWWL

o 7 SINCLAIR OIL & GAS COMPANY MAP

2 Cone, J. R. "B"

Sec. 26, T-21-S, R-37-E

CO-ORD

660' fr S Line & 1980' fr E Line of Sec.

Re-Spud 4-28-64

Re-Comp 5-11-64

CLASS

EL

FORMATION

DATUM

FORMATION

DATUM

CSG & SX . TUBING

13 3/8" 318' 300

8 5/8" 2829' 1000

5 1/2" 6583' 500

LOGS EL GR RA IND HC A

TD 6583', PBD 6548'

IP Blinebry Perfs 5715-5886' Flwd 237 BOPD. Pot. Based on
8 hr test of 79 BO thru 20/64" chk., TP 360#, CP 600#, Gravity
38., GOR 2090.

NOW DUAL COMPLETE WITH DRINKARD PERFS 6453-6548'

Distribution limited and publication prohibited by subscribers' agreement.
Reproduction rights reserved by Williams & Lee Scouting Service, Inc.

CONT.

PROP DEPTH

TYPE

DATE

6-1-64

F.R.C. 6-4-64; OWWO, OTD 6583'.
NOW DUAL COMPLETE WITH DRINKARD Perfs 6453-6548'
TD 6583', PBD 6548', COMPLETED.
Perf 5919-23' W/8 shots & sq. w/85 sx.
Perf 5615-19' W/8 shots
MA 200 gals (5615-19') & sq. w/75 sx.
Set Pkr @ 6320'
Perf (Blinebry) 5715-5886' W/34 shots
Ac. 1500 gals.
Frac 20,000 gals oil + 20,000# sd. 5715-5886'
Frac 20,000 gals lse. oil + 17,000# sd.
(Old Drinkard Perfs 6453-6548')
Flwd 259 BO/24 hrs thru 22/64" chk., GOR 1895,
Gravity 37.8, CP 815#, TP 500#.

**NEW MEXICO OIL CONSERVATION COMMISSION
WELL LOCATION AND ACREAGE DEDICATION PLAT**

Form C-102
Supersedes C-128
Effective 1-1-65

All distances must be from the outer boundaries of the Section.

Operator Atlantic Richfield Company			Lease J. R. Cone "B"		Well No. 2
Unit Letter 0	Section 26	Township 21-S	Range 37-E	County Lea	
Actual Footage Location of Well: 660 feet from the South line and 1980 feet from the East line					
Ground Level Elev: 3376'	Producing Formation Blinebry		Pool Blinebry Gas		Dedicated Acreage: 40 Acres

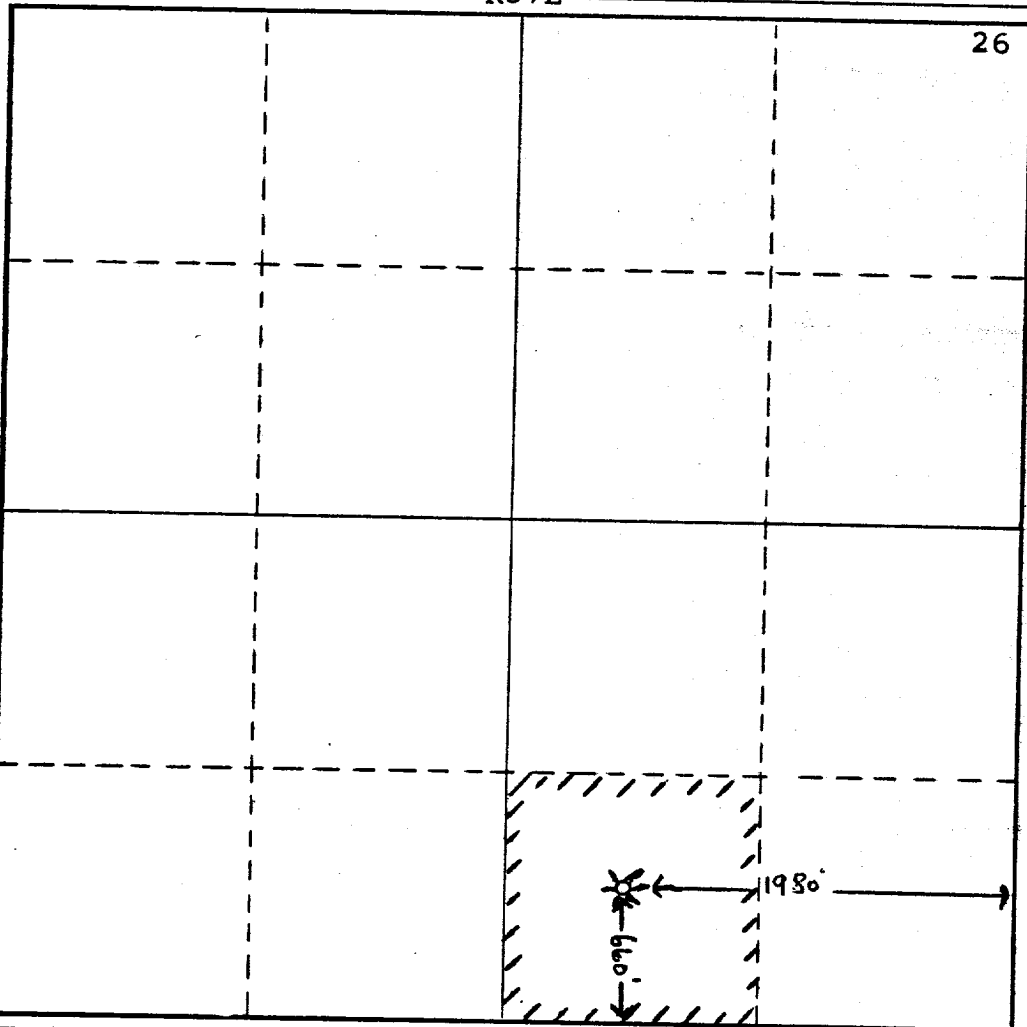
1. Outline the acreage dedicated to the subject well by colored pencil or hatchure marks on the plat below.
2. If more than one lease is dedicated to the well, outline each and identify the ownership thereof (both as to working interest and royalty).
3. If more than one lease of different ownership is dedicated to the well, have the interests of all owners been consolidated by communitization, unitization, force-pooling, etc?

☐ Yes ☐ No If answer is "yes," type of consolidation _____

If answer is "no," list the owners and tract descriptions which have actually been consolidated. (Use reverse side of this form if necessary.) _____

No allowable will be assigned to the well until all interests have been consolidated (by communitization, unitization, forced-pooling, or otherwise) or until a non-standard unit, eliminating such interests, has been approved by the Commission.

R37E



CERTIFICATION

I hereby certify that the information contained herein is true and complete to the best of my knowledge and belief.

O. D. Bretches

Name
O. D. Bretches

Position
Dist. Drlg. Supervisor

Company
Atlantic Richfield Co.

Date
January 19, 1973

I hereby certify that the well location shown on this plat was plotted from field notes of actual surveys made by me or under my supervision, and that the same is true and correct to the best of my knowledge and belief.

Date Surveyed

Registered Professional Engineer and/or Land Surveyor

Certificate No.

T
21
S

NEW MEXICO OIL CONSERVATION COMMISSION
WELL LOCATION AND ACREAGE DEDICATION PLAT

Form C-102
Supersedes C
Effective 1-1-1

All distances must be from the outer boundaries of the Section.

Operator Atlantic Richfield Company			Lease J. R. Cone "B"			Well No. 2		
Unit Letter O	Section 26	Township 21S	Range 37E	County Lea				
Actual Footage Location of Well: 660 feet from the South line and 1980' feet from the East line								
Ground Level Elev. 3376'	Producing Formation Blinebry		Pool Blinebry - Gas			Dedicated Acreage: 80 Acres		

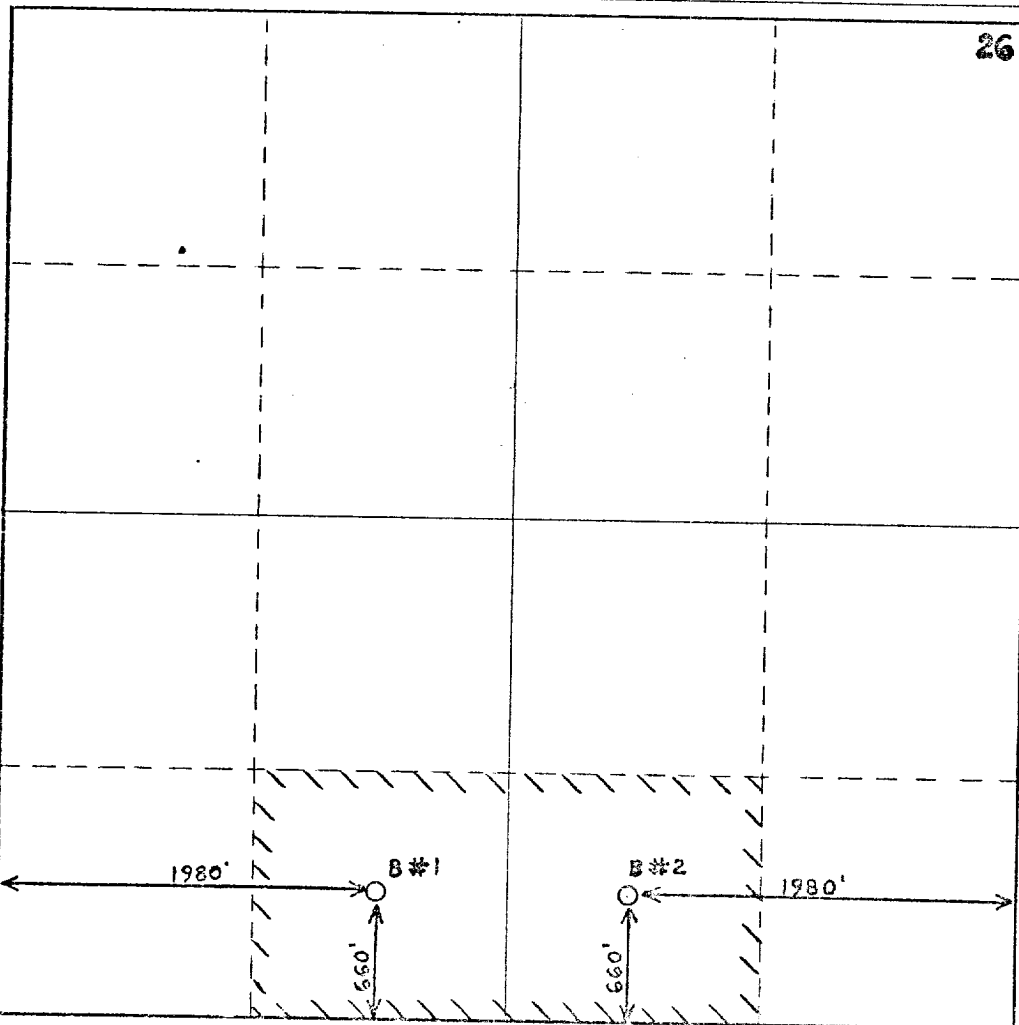
1. Outline the acreage dedicated to the subject well by colored pencil or hachure marks on the plat below.
2. If more than one lease is dedicated to the well, outline each and identify the ownership thereof (both as to working interest and royalty).
3. If more than one lease of different ownership is dedicated to the well, have the interests of all owners been consolidated by communitization, unitization, force-pooling, etc?

☐ Yes ☐ No If answer is "yes," type of consolidation _____

If answer is "no," list the owners and tract descriptions which have actually been consolidated. (Use reverse side of this form if necessary.) _____

No allowable will be assigned to the well until all interests have been consolidated (by communitization, unitization, forced-pooling, or otherwise) or until a non-standard unit, eliminating such interests, has been approved by the Commission.

R37E



CERTIFICATION

I hereby certify that the information contained herein is true and complete to the best of my knowledge and belief.

W. R. K. [Signature]

Name
Dist. Prod. & Drilg. Supt.
Position
Atlantic Richfield Company
Company
February 7, 1972
Date

I hereby certify that the well location shown on this plat was plotted from field notes of actual surveys made by me or under my supervision, and that the same is true and correct to the best of my knowledge and belief.

Date Surveyed
Registered Professional Engineer and/or Land Surveyor

Certificate No.

T
21
S

0 330 660 990 1320 1650 1980 2310 2640 2000 1500 1000 500 0

RECEIVED

FEB 6 1972

OIL CONSERVATION COMM.
HOBBS, N. M.

NEW MEXICO OIL CONSERVATION COMMISSION
WELL LOCATION AND ACREAGE DEDICATION PLAT - AMENDED

Form C-11
Supersede
Effective 1

All distances must be from the outer boundaries of the Section.

Operator Atlantic Richfield Company			Lease J. R. Cone "B"		Well No. 2
Unit Letter O	Section 26	Township 21-S	Range 37-E	County Lea	
Actual Footage Location of Well: 1980 feet from the East line and 660 feet from the South line					
Ground Level Elev.	Producing Formation Blinebry		Pool Blinebry Gas Pool		Dedicated Acreage: 40 Acres

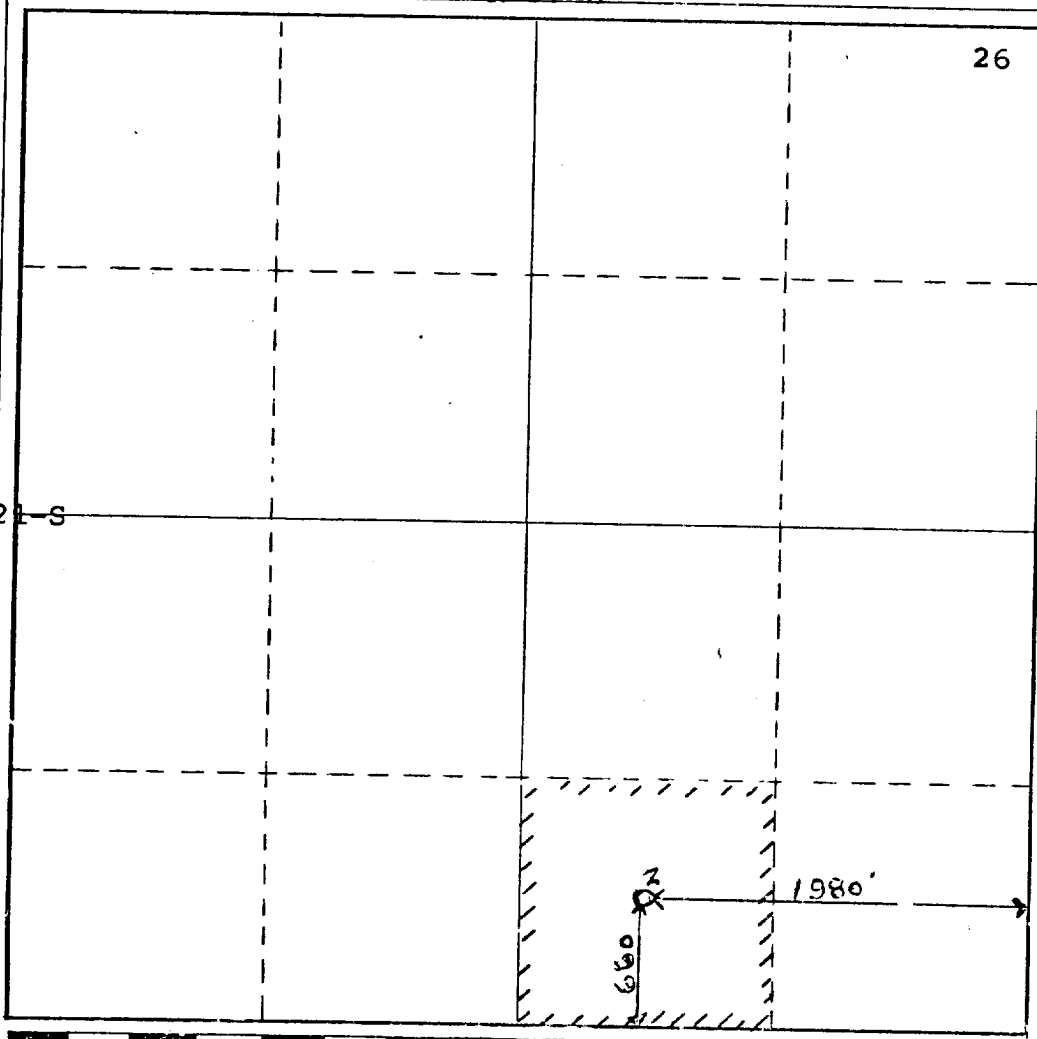
1. Outline the acreage dedicated to the subject well by colored pencil or hachure marks on the plat below.
2. If more than one lease is dedicated to the well, outline each and identify the ownership thereof (both as to working interest and royalty).
3. If more than one lease of different ownership is dedicated to the well, have the interests of all owners been consolidated by communitization, unitization, force-pooling, etc?

☐ Yes ☐ No If answer is "yes," type of consolidation _____

If answer is "no," list the owners and tract descriptions which have actually been consolidated. (Use reverse side of this form if necessary.) _____

No allowable will be assigned to the well until all interests have been consolidated (by communitization, unitization, forced-pooling, or otherwise) or until a non-standard unit, eliminating such interests, has been approved by the Commission.

R-37-E



CERTIFICATION

I hereby certify that the information contained herein is true and complete to the best of my knowledge and belief.

O. D. Bretches

Name
O. D. Bretches

Position
Dist. Drlg. Supervisor

Company
Atlantic Richfield Co.

Date
March 2, 1971

I hereby certify that the well location shown on this plat was plotted from field notes of actual surveys made by me or under my supervision, and that the same is true and correct to the best of my knowledge and belief.

Date Surveyed

Registered Professional Engineer and/or Land Surveyor

Certificate No.

0 330 660 990 1320 1650 1980 2310 2640 2000 1500 1000 500 0

RECEIVED

APR 21 1971

OIL CONSERVATION COMM.
HOBECA, N. M.