

NEW MEXICO OIL CONSERVATION COMMISSION
WELL LOCATION AND ACREAGE DEDICATION PLAT

Form C-102
Supersedes C-128
Effective 1-1-65

All distances must be from the outer boundaries of the Section.

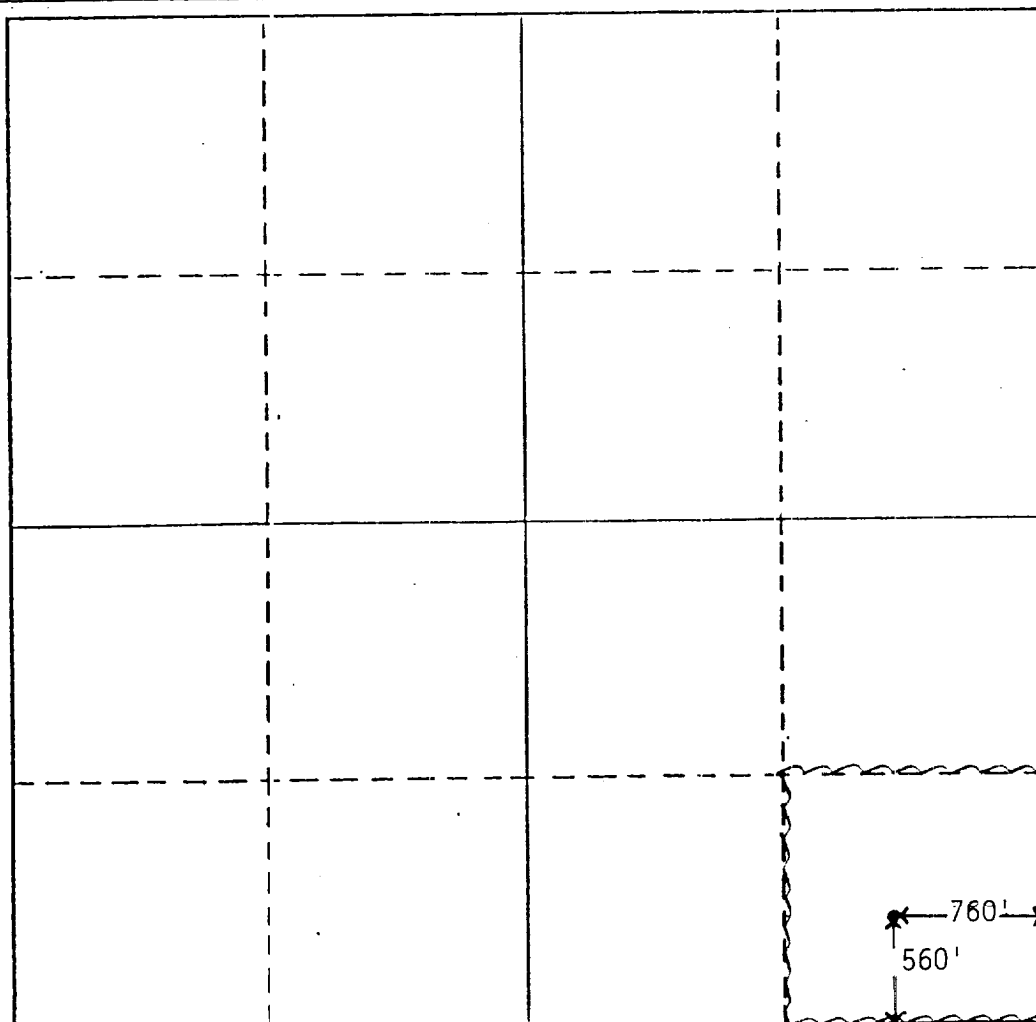
Operator AMOCO PRODUCTION COMPANY		Lease Turner		Well No. 3
Unit Letter P	Section 29	Township 21-S	Range 37-E	County Lea
Actual Footage Location of Well: 560 feet from the South line and 760 feet from the East line				
Ground Level Elev. 3477' DF	Producing Formation Paddock	Pool Paddock	Dedicated Acreage: 40 Acres	

1. Outline the acreage dedicated to the subject well by colored pencil or hachure marks on the plat below.
2. If more than one lease is dedicated to the well, outline each and identify the ownership thereof (both as to working interest and royalty).
3. If more than one lease of different ownership is dedicated to the well, have the interests of all owners been consolidated by communization, unitization, force-pooling, etc?

☐ Yes ☐ No If answer is "yes," type of consolidation _____

If answer is "no," list the owners and tract descriptions which have actually been consolidated. (Use reverse side of this form if necessary.) _____

No allowable will be assigned to the well until all interests have been consolidated (by communization, unitization, forced-pooling, or otherwise) or until a non-standard unit, eliminating such interests, has been approved by the Commission.



CERTIFICATION

I hereby certify that the information contained herein is true and complete to the best of my knowledge and belief.

Name

Maurice Mitchell

Position

Sr. Admin. Analyst

Company

AMOCO PRODUCTION COMPANY

Date

June 15, 1987

I hereby certify that the well location shown on this plat was plotted from field notes of actual surveys made by me or under my supervision, and that the same is true and correct to the best of my knowledge and belief.

Date Surveyed

Registered Professional Engineer and/or Land Surveyor

Certificate No.

0 330 660 990 1320 1650 1980 2310 2640 2000 1500 1000 500 0

RECEIVED

JUN 16 1987

**OCD
HOBBS OFFICE**