

## DISTRICT I

P.O. Box 1940, Hobbs, NM 88241-1980

## DISTRICT II

P.O. Box Drawer DD, Artesia, NM 88211-0719

## DISTRICT III

1000 Rio Brazos Rd., Aztec, NM 87410

## DISTRICT IV

P.O. Box 2088, Santa Fe, NM 87504-2088

State of New Mexico  
Energy, Minerals and Natural Resources Department

## OIL CONSERVATION DIVISION

P.O. Box 2088  
Santa Fe, New Mexico 87504-2088

Form C-101

Revised February 10, 1999

Instructions on back

Submit to Appropriate District Office

State Lease - 6 Copies

Fee Lease - 5 Copies

☐ AMENDED REPORT

## APPLICATION FOR PERMIT TO DRILL, RE-ENTER, DEEPEN, PLUGBACK, OR ADD A ZONE

<sup>1</sup> Operator Name and Address CHEVRON USA INC 15 SMITH ROAD, MIDLAND, TX 79705		<sup>2</sup> OGRID Number 4323
<sup>4</sup> Property Code 2606	<sup>5</sup> Property Name CENTRAL DRINKARD UNIT	<sup>3</sup> API Number 30-025-06921 <sup>6</sup> Well No. 136

<sup>7</sup> Surface Location									
UI or lot no.	Section	Township	Range	Lot.Idn	Feet From The	North/South Line	Feet From The	East/West Line	County
H	31	21-S	37-E		1980'	NORTH	330'	EAST	LEA

<sup>8</sup> Proposed Bottom Hole Location If Different From Surface									
UI or lot no.	Section	Township	Range	Lot.Idn	Feet From The	North/South Line	Feet From The	East/West Line	County
P	30	21-S	37-E		360'	SOUTH	734'	EAST	LEA
<sup>9</sup> Proposed Pool 1 CENTRAL DRINKARD					<sup>10</sup> Proposed Pool 2				

<sup>11</sup> Work Type Code P <i>Horizontal</i>	<sup>12</sup> Well Type Code O	<sup>13</sup> Rotary or C.T. ROTARY	<sup>14</sup> Lease Type Code P	<sup>15</sup> Ground Level Elevation
<sup>16</sup> Multiple No	<sup>17</sup> Proposed Depth 8980'	<sup>18</sup> Formation DRINKARD	<sup>19</sup> Contractor	<sup>20</sup> Spud Date 12/1/2002

<sup>21</sup> Proposed Casing and Cement Program

SIZE OF HOLE	SIZE OF CASING	WEIGHT PER FOOT	SETTING DEPTH	SACKS OF CEMENT	EST. TOP
NO CHANGE					

<sup>22</sup> Describe the proposed program. If this application is to DEEPEN or PLUG BACK give the data on the present productive zone and proposed new productive zone.  
Describe the blowout prevention program, if any. Use additional sheets if necessary.

CHEVRON U.S.A. INC. INTENDS TO DRILL A HORIZONTAL LATERAL IN THE SUBJECT WELL.

KICK OFF POINT: 6480'  
TOP OF WINDOW: 6475'  
BOTTOM OF WINDOW: 6485'

TARGET INTERVAL: 6550-6620'  
LENGTH OF LATERAL: 2500'

Permit Expires 1 Year From Approval  
Date Unless Drilling Underway  
*Horizontal*

<sup>23</sup> I hereby certify that the rules and regulations of the Oil Conservation Division have been complied with and that the information given above is true and complete to the best of my knowledge and belief.		OIL CONSERVATION DIVISION	
Signature <i>Denise Leake</i>			
Printed Name Denise Leake		Approved By: PAUL F. KAUTZ PETROLEUM ENGINEER	
Title Regulatory Specialist		Title:	
Date 11/1/2002		Approval Date: NOV 25 2002 Expiration Date:	
Telephone 915-687-7375		Conditions of Approval: Attached <input type="checkbox"/>	

DISTRICT I

P.O. Box 1980, Hobbs, NM 88241-1980

DISTRICT II

P.O. Box Drawer DD, Artesia, NM 88211-0719

DISTRICT III

1000 Rio Brazos Rd., Aztec NM 87410

DISTRICT IV

P.O. Box 2088, Santa Fe, NM 87504-2088

State of New Mexico  
Energy, Minerals and Natural Resources Department

## OIL CONSERVATION DIVISION

P.O. Box 2088  
Santa Fe, New Mexico 87504-2088

Form C-102

Revised February 10, 1999

Instructions on back

Submit to Appropriate District Office

State Lease - 4 Copies

Fee Lease - 3 Copies

☐ AMENDED REPORT

## WELL LOCATION AND ACREAGE DEDICATION PLAT

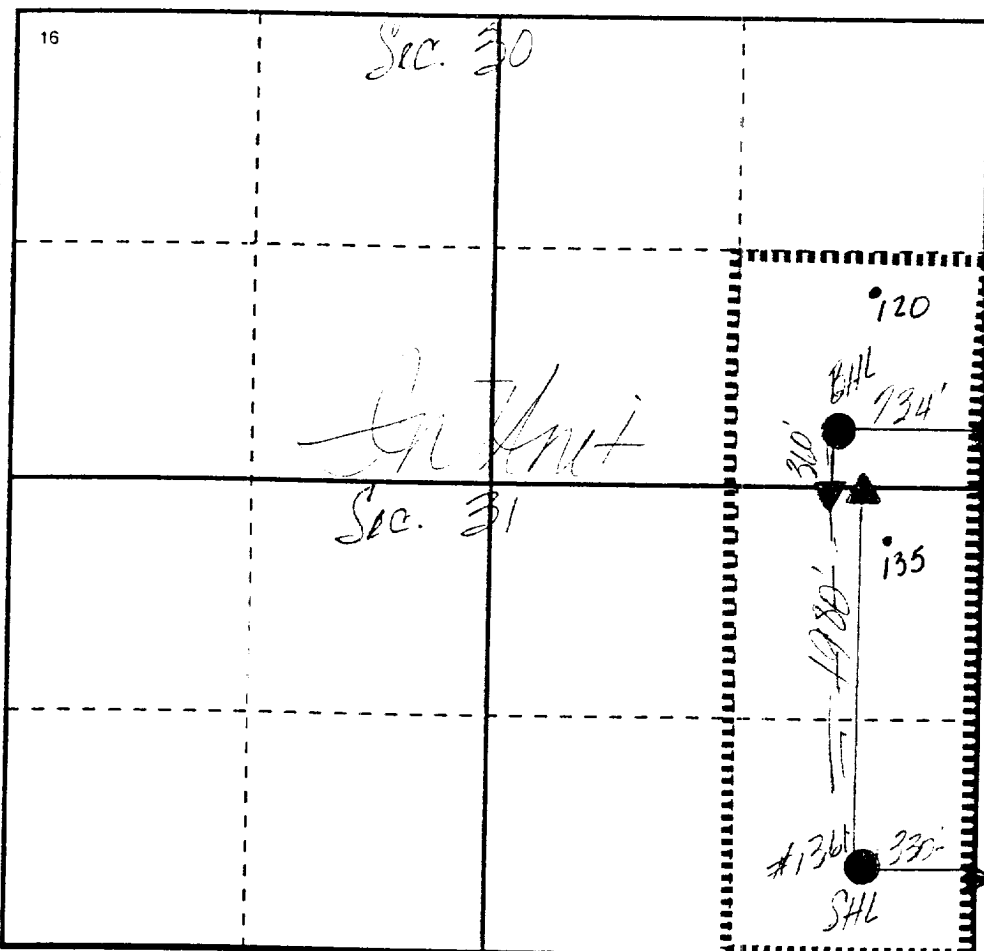
1 API Number <b>30-005-06921</b>		2 Pool Code 19190		3 Pool Name DRINKARD	
4 Property Code 2506		5 Property Name CENTRAL DRINKARD UNIT		6 Well No. 136	
7 OGRID Number 4323		8 Operator Name CHEVRON USA INC		9 Elevation	

## 10 Surface Location

UI or lot no	Section	Township	Range	Lot Idn	Feet From The	North/South Line	Feet From The	East/West Line	County
H	31	21-S	37-E		1980'	NORTH	330'	EAST	LEA

## 11 Bottom Hole Location If Different From Surface

UI or lot no.	Section	Township	Range	Lot Idn	Feet From The	North/South Line	Feet From The	East/West Line	County
P	30	21-S	37-E		360'	SOUTH	734'	EAST	LEA
12 Dedicated Acre <b>120</b>		13 Joint or Infill No		14 Consolidation Code		15 Order No.			

NO ALLOWABLE WILL BE ASSIGNED TO THIS COMPLETION UNTIL ALL INTERESTS HAVE BEEN CONSOLIDATED  
OR A NON-STANDARD UNIT HAS BEEN APPROVED BY THE DIVISION

## 17 OPERATOR CERTIFICATION

I hereby certify that the information  
contained herein is true and complete to the  
best of my knowledge and belief

Signature

Printed Name

Denise Leake

Position

Regulatory Specialist

Date

11/1/2002

## 18 SURVEYOR CERTIFICATION

I hereby certify that the well location shown  
on this plat was plotted from field notes of  
actual surveys made by me or under my  
supervision, and that the same is true and  
correct to the best of my knowledge and  
belief.

Date Surveyed

Signature & Seal of  
Professional Surveyor

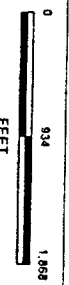
Certificate No.

0 330 660 990 1320 1650 1980 2310 2640 2000 1500 1000 500 0

**ChevronTexaco**

**Central Drinkard Unit**

Proposed CDU 136H location



**WELL SYMBOLS**

- Location Only
- Oil Well
- ⦿ Plugged & Abandoned Gas Well
- ⦿ Shut-In Well
- ⦿ Injector Well

By: Cynthia L. Welch

