

This form is not to
be used for reporting
packer leakage tests
in Northwest New Mexico

SOUTHEAST NEW MEXICO PACKER LEAKAGE TEST

Operator Mobil Producing TX. & N.M. Inc.			Lease E. O. Carson			Well No. 9
LOCATION OF WELL	Unit E	Sec. 33	Twp. 21S	Rge. 37E	County Lea	
NAME OF RESERVOIR OR POOL			TYPE OF PROD. (Oil or Gas)	METHOD OF PROD. FLOW, ART LIFT	PROD. MEDIUM (Tbg or Csg)	CHOKE SIZE
Upper Compl.	Paddock		Oil	Art. Lift	Csg.	Full
Lower Compl.	Tubb		Gas	Gas	Tbg.	Full

FLOW TEST NO. 1

Both zones shut-in at (hour, date): 11/07/83 1:00

Well opened at (hour, date): 11/08/83 1:00

	Upper Completion	Lower Completion
Indicate by (X) the zone producing		X
Pressure at beginning of test	30	50
Stabilized? (Yes or No)	Yes	Yes
Maximum pressure during test	30	55
Minimum pressure during test	30	50
Pressure at conclusion of test	30	55
Pressure change during test (Maximum minus Minimum)	0	5
Was pressure change an increase or a decrease?	Same	Increase

Well closed at (hour, date): 11/09/83 1:00 Total Time On Production 24 hours

Oil Production Gas Production

During Test: 1 bbls; Grav. 36.2 @ 70; During Test 485 MCF; GOR 485,000

Remarks: _____

(Continue on reverse side)

FLOW TEST NO. 2

Well opened at (hour, date):	11/10/83 1:00	Upper Completion	Lower Completion
Indicate by (X) the zone producing		X	
Pressure at beginning of test		30	410
Stabilized? (Yes or No)		Yes	Yes
Maximum pressure during test		30	410
Minimum pressure during test		30	410
Pressure at conclusion of test		30	410
Pressure change during test (Maximum minus Minimum)		0	0
Was pressure change an increase or a decrease?		Same	Same
Well closed at (hour, date):	11/11/83 1:00	Total Time On Production	24 hours
Oil Production During Test:	5 bbls; Grav. 37.4 @ 70	Gas Production During Test	21 MCF; GOR 42,000
Remarks:			

I hereby certify that the information herein contained is true and complete to the best of my knowledge.

Approved NOV 30 1983 19
New Mexico Oil Conservation Division

By ORIGINAL SIGNED BY EDDIE SEAY
OIL & GAS INSPECTOR
Title

Operator Mobil Producing TX. & N.M. Inc.
By Paula A. Colline
Title Authorized Agent
Date 11/22/83

SOUTHEAST NEW MEXICO PACKER LEAKAGE TEST INSTRUCTIONS

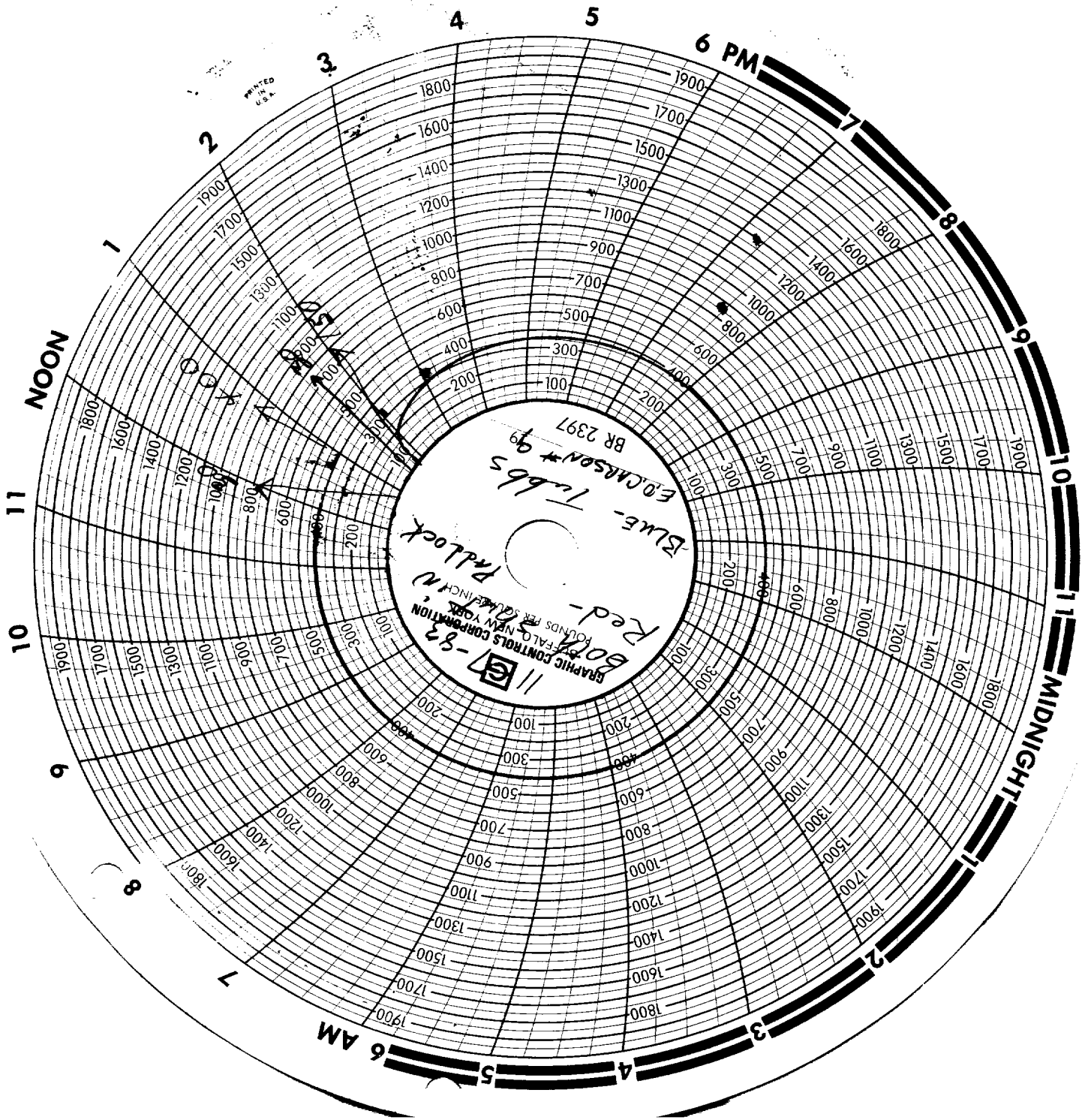
1. A packer leakage test shall be commenced on each multiply completed well within seven days after actual completion of the well, and annually thereafter as prescribed by the order authorizing the multiple completion. Such tests shall also be commenced on all multiple completions within seven days following recompletion and/or chemical or fracture treatment, and whenever remedial work has been done on a well during which the packer or the tubing have been disturbed. Tests shall also be taken at any time that communication is suspected or when requested by the Division.
2. At least 72 hours prior to the commencement of any packer leakage test, the operator shall notify the Division in writing of the exact time the test is to be commenced. Offset operators shall also be so notified.
3. The packer leakage test shall commence when both zones of the dual completion are shut-in for pressure stabilization. Both zones shall remain shut-in until the well-head pressure in each has stabilized and for a minimum of two hours thereafter, provided however, that they need not remain shut-in more than 24 hours.
4. For Flow Test No. 1, one zone of the dual completion shall be produced at the normal rate of production while the other zone remains shut-in. Such test shall be continued until the flowing wellhead pressure has become stabilized and for a minimum of two hours thereafter, provided however, that the flow test need not continue for more than 24 hours.

5. Following completion of Flow Test No. 1, the well shall again be shut-in, in accordance with Paragraph 3 above.

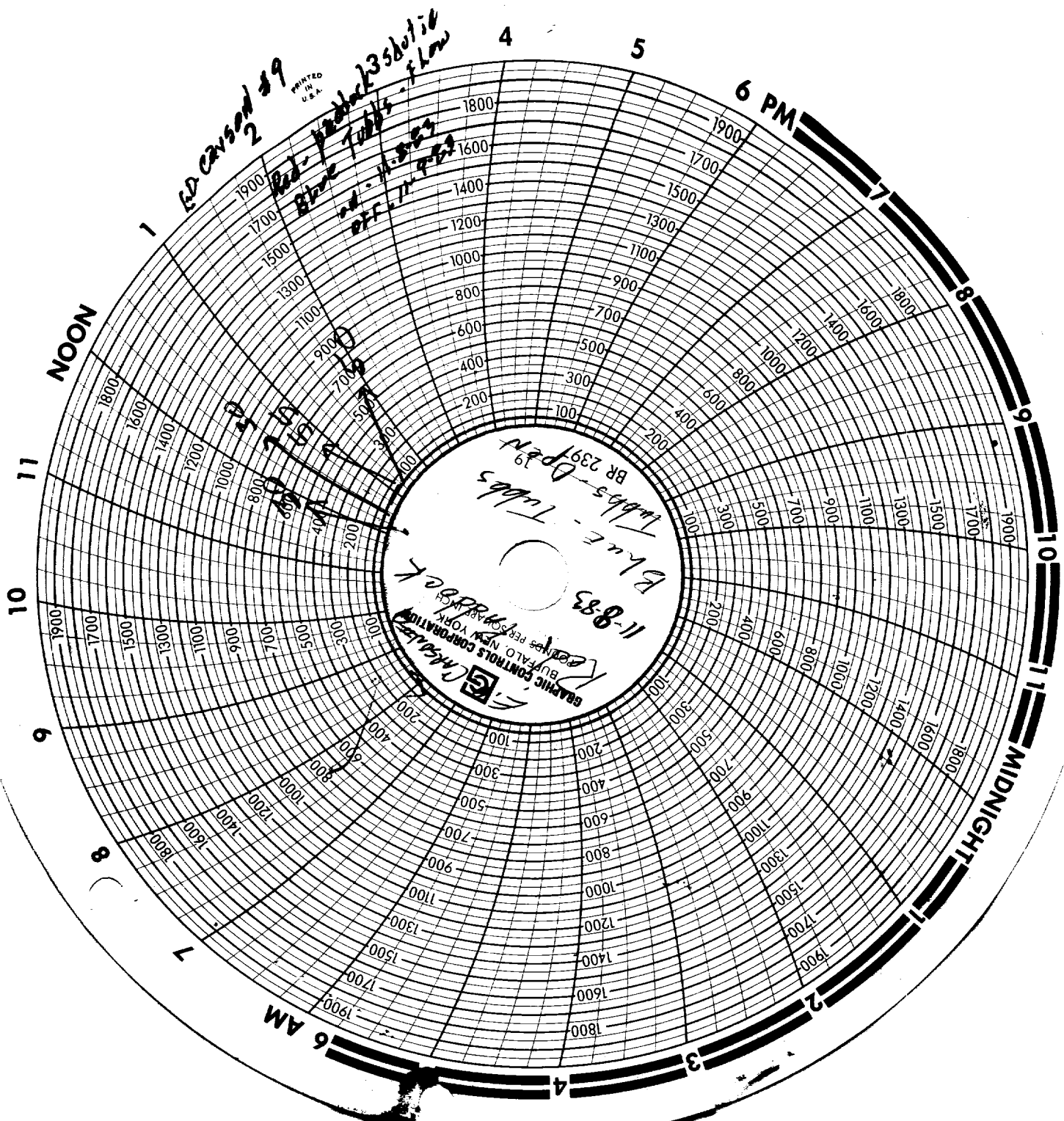
6. Flow Test No. 2 shall be conducted even though no leak was indicated during Flow Test No. 1. Procedure for Flow Test No. 2 is to be the same as for Flow Test No. 1 except that the previously produced zone shall remain shut-in while the previously shut-in zone is produced.

7. All pressures, throughout the entire test, shall be continuously measured and recorded with recording pressure gauges, the accuracy of which must be checked with deadweight tester at least twice, once at the beginning and once at the end, of each flow test.

8. The results of the above-described tests shall be filed in triplicate within 15 days after completion of the test. Tests shall be filed with the appropriate District Office of the New Mexico Oil Conservation Division on Southeast New Mexico Packer Leakage Test Form Revised 11-01-58, together with the original pressure recording gauge charts with all the deadweight pressures which were taken indicated thereon. In lieu of filing the aforesaid charts, the operator may construct a pressure versus time curve for each zone of each test, indicating thereon all pressure changes which may be reflected by the gauge charts as well as all deadweight pressure readings which were taken. If the pressure curve is submitted, the original charts must be permanently filed in the operator's office. Form C-116 shall also accompany the Packer Leakage Test Form when the test period coincides with a gas-oil ratio test period.



11-8-83
E.O. CARRISON #
R- Tubbs # 9
Paddock

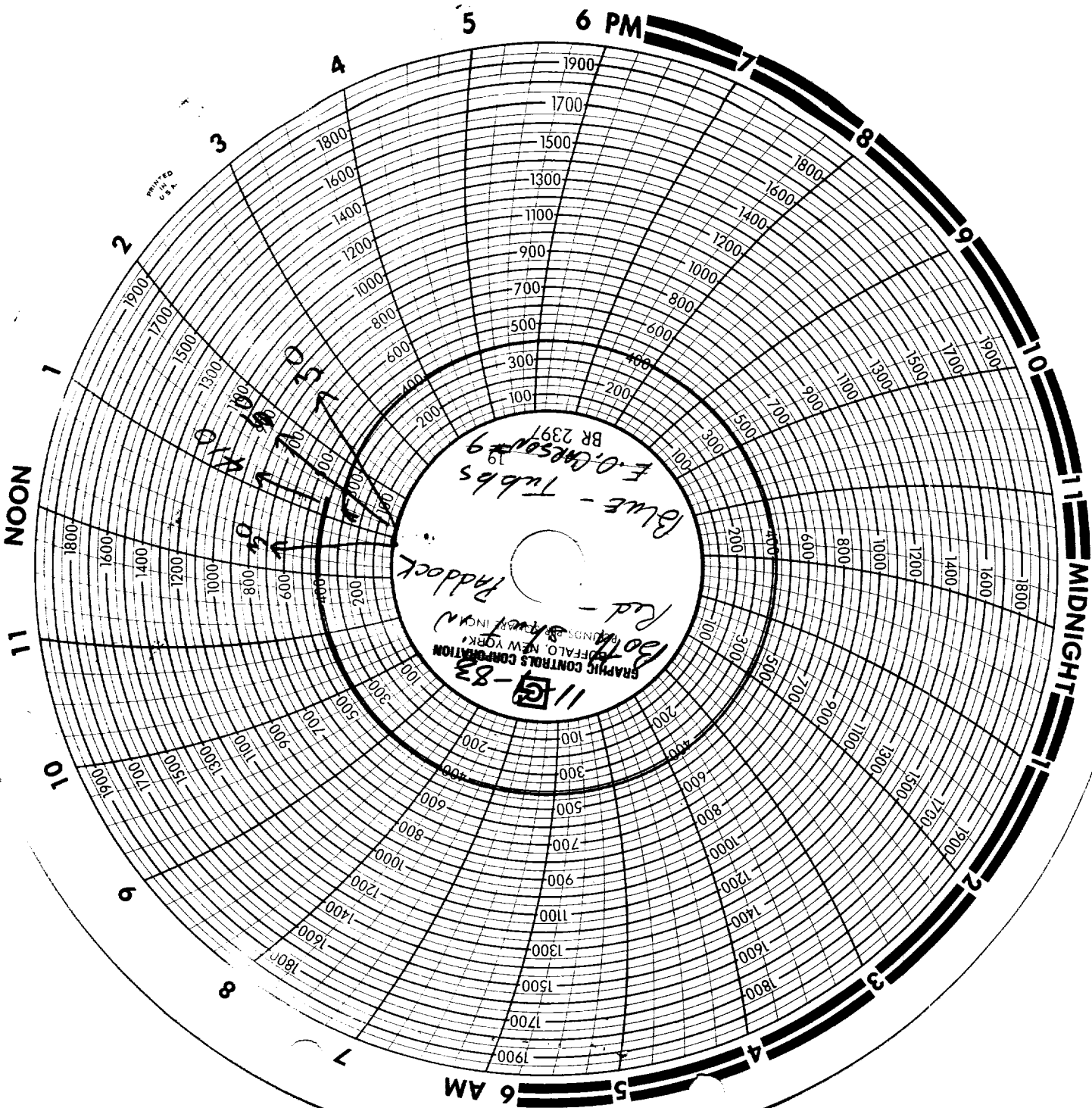


Red caused 2
Red - product 3 slot
Blue Tabs - flow
off 11-883

11-883
Blue-Tabs
BR 239-Open

GRAPHIC CONTROLS CORPORATION
BUFFALO, NEW YORK
GRAPHIC PERSONAL





U. Car. #9
11-9-83
Red - Paddock
Blue - Tubs
Both shut in