

DISTRICT I
P.O. Box 1980, Hobbs, NM 88240

OIL CONSERVATION DIVISION

DISTRICT II
P.O. Drawer DD, Artesia, NM 88210

P.O. Box 2088
Santa Fe, New Mexico 87504-2088

This form is not to be used for
reporting packer leakage tests in
Northwest New Mexico

SOUTHEAST NEW MEXICO PACKER LEAKAGE TEST

| | | | | | | | | |
|---------------------------|--------------|------|----------------------------|--------------------------------|----------------------------|------------|----------|---|
| Operator | OXY USA Inc. | | | | Lease | Owen | Well No. | 2 |
| Location of Well | Unit | Sec. | Twp | Rge | County | | Lea | |
| | 0 | 35 | 215 | 37E | | | | |
| Name of Reservoir or Pool | | | Type of Prod. (Oil or Gas) | Method of Prod. Flow, Art Lift | Prod. Medium (Tbg. or Csg) | Choke Size | | |
| Upper Compl | Blanchry | | Gas | Flow | Csg | Open | | |
| Lower Compl | Wentz Abo | | Oil | Flow | Tbg | Open | | |

FLOW TEST NO. 1

Both zones shut-in at (hour, date): 16:00 5/23/95

Well opened at (hour, date): 8:00 5/24/95

| | | |
|--|--------------------------|-------------------|
| Indicate by (X) the zone producing..... | Upper Completion | Lower Completion |
| | X | |
| Pressure at beginning of test..... | 250 | 260 |
| Stabilized? (Yes or No)..... | Yes | Yes |
| Maximum pressure during test..... | 250 | 260 |
| Minimum pressure during test..... | 35 | 240 |
| Pressure at conclusion of test..... | 35 | 255 |
| Pressure change during test (Maximum minus Minimum)..... | 215 | 20 |
| Was pressure change an increase or a decrease?..... | Decrease | Decrease |
| Well closed at (hour, date): <u>15:00 5/24/95</u> | Total Time On Production | <u>7 hrs</u> |
| Oil Production | Gas Production | |
| During Test: <u>—</u> bbls; Grav. <u>—</u> | During Test: <u>5</u> | MCF; GOR <u>—</u> |
| Remarks <u>No Packer Leakage indicated.</u> | | |

FLOW TEST NO. 2

Well opened at (hour, date): 7:30 5/25/95

| | | |
|--|--------------------------|-----------------------|
| Indicate by (X) the zone producing..... | Upper Completion | Lower Completion |
| | | X |
| Pressure at beginning of test..... | 250 | 250 |
| Stabilized? (Yes or No)..... | No | Yes |
| Maximum pressure during test..... | 290 | 250 |
| Minimum pressure during test..... | 250 | 40 |
| Pressure at conclusion of test..... | 290 | 40 |
| Pressure change during test (Maximum minus Minimum)..... | 40 | 210 |
| Was pressure change an increase or a decrease?..... | Increase | Decrease |
| Well closed at (hour, date): <u>12:00 5/25/95</u> | Total time on Production | <u>7.5 hrs.</u> |
| Oil production | Gas Production | |
| During Test: <u>.5</u> bbls; Grav. <u>35.6</u> | During Test: <u>8</u> | MCF; GOR <u>16000</u> |
| Remarks <u>No Packer Leakage indicated</u> | | |

OPERATOR CERTIFICATE OF COMPLIANCE

I hereby certify that the information contained herein is true and completed to the best of my knowledge

OXY USA Inc.
Operator

David Stewart
Signature

David Stewart Regulatory Analyst
Printed Name Title

7/5/95 915-685-2717
Date Telephone No.

OIL CONSERVATION DIVISION

ORIGINAL SIGNED BY JERRY SEXTON
DISTRICT I SUPERVISOR

Date Approved _____

By _____

Title _____

JUL 10 1995

200 11 100

RECEIVED

JUL 07 1995
JULY 7 1995
OFFICE

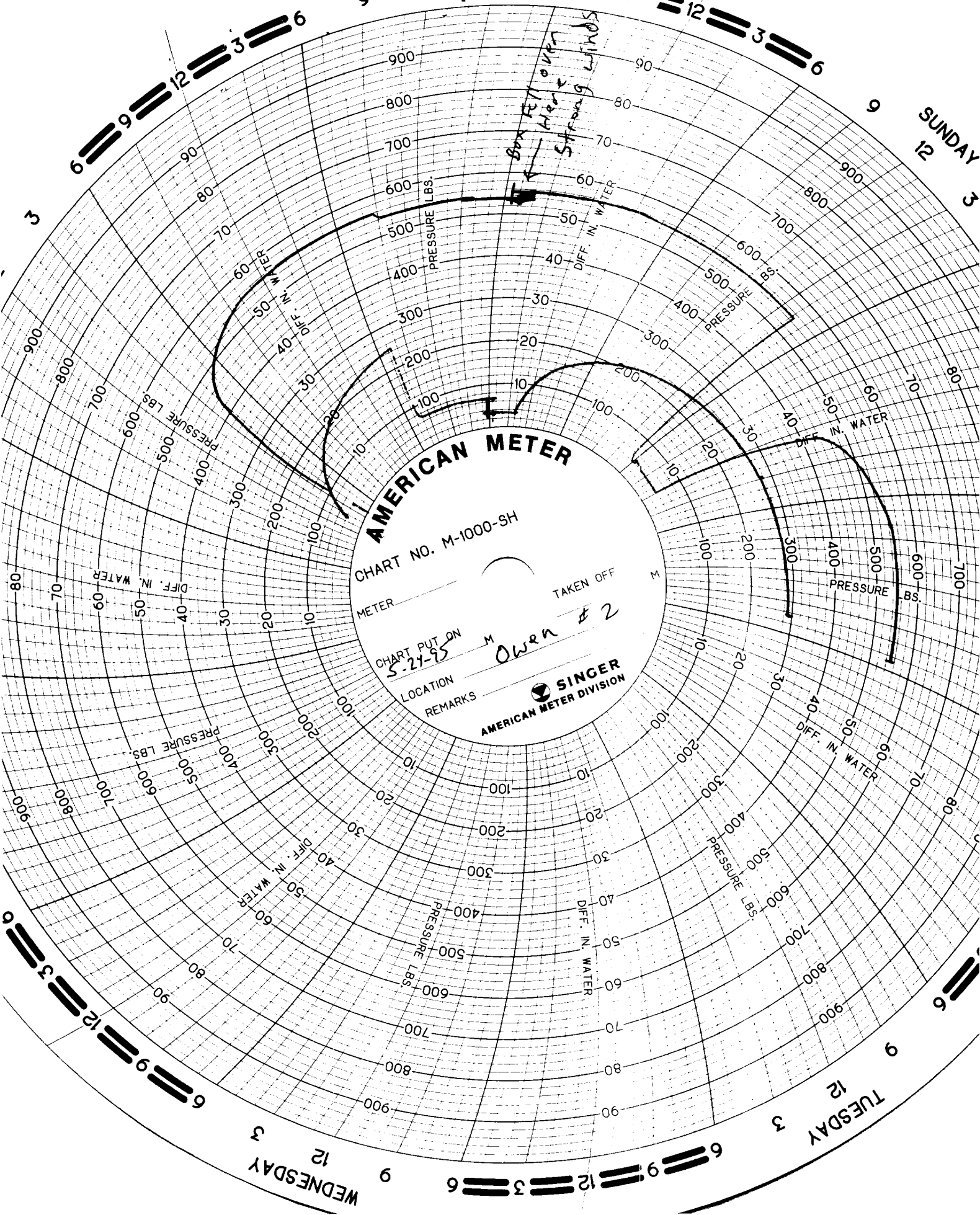
SATURDAY

SUNDAY

AMERICAN METER
CHART NO. M-1000-SH

METER _____ TAKEN OFF _____
CHART PUT ON 5-21-95 M
LOCATION OWRN # 2
REMARKS

SINGER
AMERICAN METER DIVISION



WEDNESDAY

TUESDAY

5-24-95

open Blindberry at 8.00 AM Red pen
close at 3.00 pm casing to ENRON

5-25-95 Tubing to Texico

open Abo at 7.30 AM blue pen
close at 3.00 pm