

Operator Marathon Oil Company			Lease MARK OWEN			Well No. 1		
Location of Well	Unit L	Sec. 35	Twp 21-S	Rge 37-E	County LEA			
Name of Reservoir or Pool			Type of Prod (Oil or Gas)	Method of Prod. Flow, Art Lift	Prod. Medium (Tbg. or Csg.)	Choke Size		
Upper Compl	PADDOCK		GAS	FLOW	CASING	NONE		
Lower Compl	TUBB		GAS	FLOW	TUBING	NONE		

FLOW TEXT NO. 1

Both zones shut-in at (hour, date): 10:00 AM, 10-20-97

Well opened at (hour, date): 2:00 PM, 10-20-97

Indicate by (X) the zone producing

Pressure at beginning of test

Stabilized? (Yes or No)

Maximum pressure during test

Minimum pressure during test

Pressure at conclusion of test

Pressure change during test (Maximum minus Minimum)

Was pressure change an increase or a decrease?

Well closed at (hour, date): 10:00 AM, 10-21-97

Oil Production During Test: 0 bbls; Grav. 0

Gas Production During Test 437

MCF; GOR 0

Remarks NONE

Upper Completion

Lower Completion

170

210

YES

YES

170

210

170

50

170

50

0

160

NONE

DECREASE

Total Time On Production 20.0 HRS

FLOW TEST NO. 2

Well opened at (hour, date):

Indicate by (X) the zone producing

Pressure at beginning of test

Stabilized? (Yes or No)

Maximum pressure during test

Minimum pressure during test

Pressure at conclusion of test

Pressure change during test (Maximum minus Minimum)

Was pressure change an increase or a decrease?

Well closed at (hour, date):

Oil Production During Test: bbls; Grav. ;

Gas Production During Test

MCF; GOR

Remarks PADDOCK ZONE SHUT IN, NO PRODUCTION FACILITIES

Upper Completion

Lower Completion

OPERATOR CERTIFICATE OF COMPLIANCE

I hereby certify that the information contained herein is true and completed to the best of my knowledge

Marathon Oil Company

OPERATOR

SIGNATURE

James Faught

PRINTED NAME

10-22-97

DATE

Clerk

TITLE

(505) 393-7106

TELEPHONE NO.

OIL CONSERVATION DIVISION

NOV 18 1997

Date Approved

By ORIGINAL SIGNED BY CHRIS WILLIAMS

DISTRICT I SUPERVISOR

Title



INSTRUCTIONS FOR SOUTHEAST NEW MEXICO PACKER LEAKAGE TEST

1. A packer leakage test shall be commenced on each multiply completed well within seven days after actual completion of the well, and annually thereafter as prescribed by the order authorizing the multiple completion. Such test shall also be commenced on all multiple completions within seven days following recompletion and/or chemical or fracture treatment, and whenever remedial work has been done on a well during which the packer or the tubing have been disturbed. Tests shall also be taken at any time that communication is suspected or when requested by the Division.
2. At least 72 hours prior to the commencement of any packer leakage test, the operator shall notify the Division in writing of the exact time the test is to be commenced. Offset operators shall also be so notified.
3. The packer leakage test shall commence when both zones of the dual completion are shut-in for pressure stabilization. Both zones shall remain shut-in until the well-head pressure in each has stabilized and for minimum of two hours thereafter, provided, however, that they need not remain shut-in more than 24 hours.
4. For Flow Test No. 1, one zone of the dual completion shall be produced at the normal rate of production while the other zone remains shut-in. Such test shall be continued until the flowing wellhead pressure has become stabilized and for minimum of two hours thereafter, provided however, that the flow test need not continue for more than 24 hours.
5. Following completion of Flow Test No. 1, the well shall again be shut-in, in accordance with Paragraph 3 above.
6. Flow Test No. 2 shall be conducted even though no leak was indicated during Flow Test No. 1. Procedure for Flow Test No. 2 is to be the same as for Flow Test No. 1 except that the previously produced zone shall remain shut-in while the previously shut-in zone is produced.
7. All pressures, throughout the entire test, shall be continuously measured and recorded with recording pressure gauges, the accuracy of which must be checked with deadweight tester at least twice, once at the beginning and once at the end, of each flow test.
8. The results of the above-described tests shall be filed in triplicate within 15 days after completion of the test. Tests shall be filed with the appropriate District Office of the New Mexico Oil Conservation Division on Southeast New Mexico Packer Leakage Test Form Revised 1-1-89, together with the original pressure recording gauge charts with all the deadweight pressures which were taken indicated thereon. In lieu of filing the aforesaid charts, the operator may construct a pressure versus time curve from each zone of each test, indicating thereon all pressure changes which may be reflected by the gauge charts as well as all deadweight pressure readings which were taken. If the pressure curve is submitted, the original chart must be permanently filed in the operator's office. Form C-116 shall also accompany the Packer Leakage Test Form when the test period coincides with a gas-oil ratio test period.

SUNDAY

AM 6 3
MIDNIGHT
PM 9 6 3

SATURDAY

MONDAY

PM 9 6 3
MIDNIGHT
AM 3 6

TUESDAY

NOON

PM 6 3

MARATHON OIL COMPANY
ANNUAL Packer Leakage TEST
MADE OCT 20 1997
10/20/97
Tubing Red = Tubing
Casing Blue = Paddock

Flow
Test

STEP
170



GRAPHIC CONTROLS CORPORATION
BUFFALO, NEW YORK

Mark Down 1

October 20 19 97

BR 2283

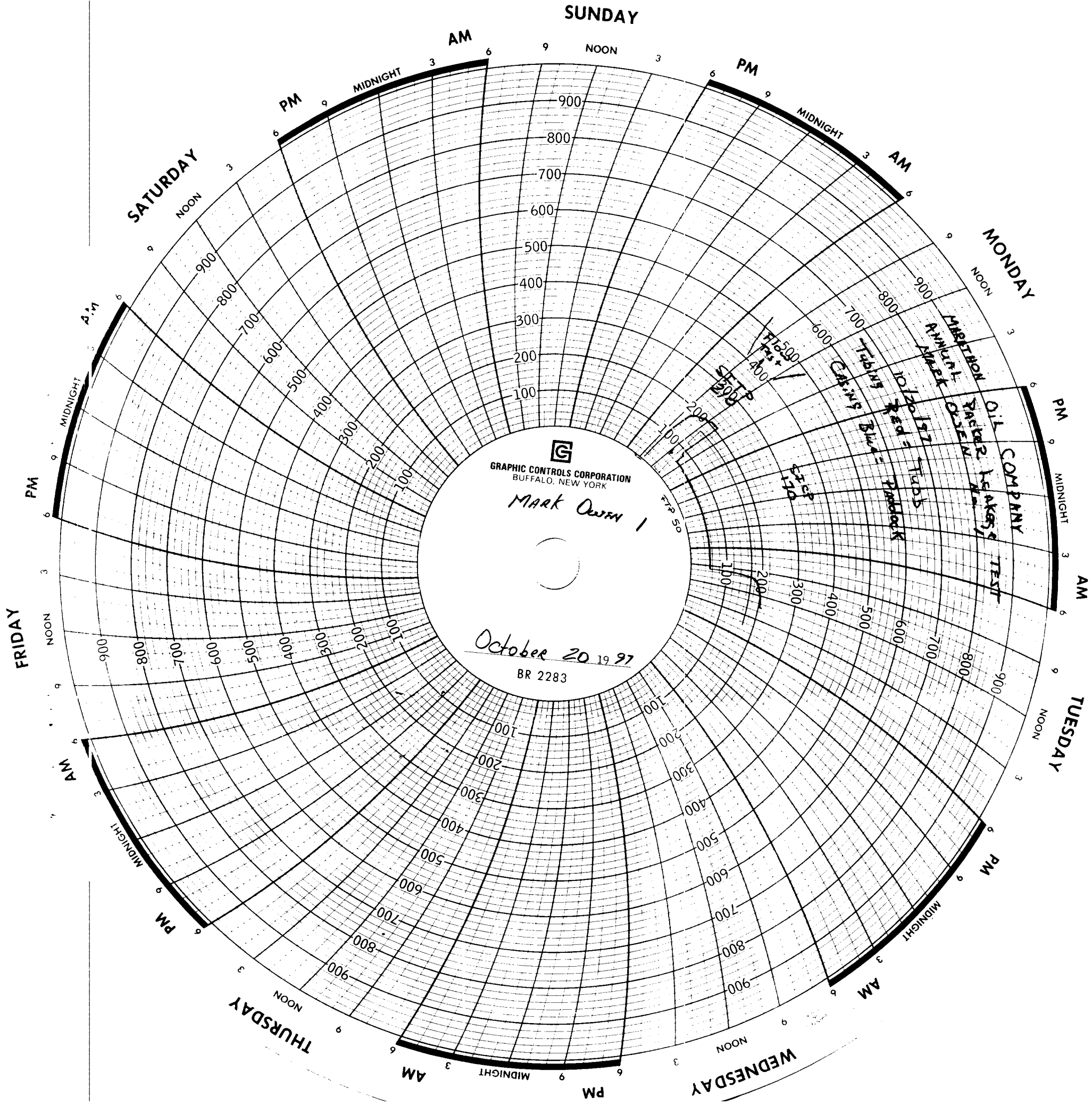
STEP 50

AM 6 3

PM 9 6 3

FRIDAY

PM 6 3



GRAPHIC CONTROLS CORPORATION
BUFFALO, NEW YORK

MARK OWEN 1

October 20 19 97
BR 2283

MONDAY

OIL COMPANY TEST

RACER LEAKS

AMMUNITION

10/20/97

Tubing

Cable

Blue

Paddock

1200

1150

1100

1000

900

800

700

600

500

400

300

200

100



R=01
B/ae
Tbs
Gg