

Form 3160-5  
(June 1990)

UNITED STATES  
DEPARTMENT OF THE INTERIOR  
BUREAU OF LAND MANAGEMENT

U.S. OIL CONS. COMMISSION  
P.O. BOX 1980  
HOBBS, NEW MEXICO 88240

Budget Bureau No. 1004-0135  
Expires: March 31, 1993

5. Lease Designation and Serial No.

LC 031695B

6. If Indian, Allottee or Tribe Name

7. If Unit or CA, Agreement Designation

Warren Unit

8. Well Name and No.

Blinebry-Tubb No. 3

9. API Well No.

07852

30-025-32242

10. Field and Pool, or Exploratory Area

Warren Blinebry-Tubb

11. County or Parish, State

Lea

SUNDRY NOTICES AND REPORTS ON WELLS

Do not use this form for proposals to drill or to deepen or reentry to a different reservoir.  
Use "APPLICATION FOR PERMIT—" for such proposals

SUBMIT IN TRIPLICATE

1. Type of Well

☒ Oil Well ☐ Gas Well ☐ Other

2. Name of Operator

Conoco, Inc.

3. Address and Telephone No.

10 Desta Dr. Ste 100W, Midland, TX 79705

4. Location of Well (Footage, Sec., T., R., M., or Survey Description)

1980' FSL & 1980' FEL

Sec. 29, T-20S, R-38E

12. CHECK APPROPRIATE BOX(S) TO INDICATE NATURE OF NOTICE, REPORT, OR OTHER DATA

TYPE OF SUBMISSION

☒ Notice of Intent

☐ Subsequent Report

☐ Final Abandonment Notice

TYPE OF ACTION

☐ Abandonment

☒ Recompletion

☐ Plugging Back

☐ Casing Repair

☐ Altering Casing

☐ Other

☐ Change of Plans

☐ New Construction

☐ Non-Routine Fracturing

☐ Water Shut-Off

☐ Conversion to Injection

☐ Dispose Water

(Note: Report results of multiple completion on Well Completion or Recompletion Report and Log form.)

13. Describe Proposed or Completed Operations (Clearly state all pertinent details, and give pertinent dates, including estimated date of starting any proposed work. If well is directionally drilled, give subsurface locations and measured and true vertical depths for all markers and zones pertinent to this work.)\*

It is proposed to recomplete this well from the McKee formation to the Blinebry formation by the following procedure:

1. Clean out hole to current RBP @ 8474' and retrieve the RBP.
2. Set cement retainer @ 8620' and pump 110 sxs cement below retainer to cover McKee formation from 8620'-9042'.
3. Spot 25 sxs cement on top of retainer from 8620'-8510'.
4. Spot 25 sxs cement above Devonian from 7830'-7720'.
5. Set 7" CIBP at 6800' above the Drinkard formation.
6. Spot 10 sxs cement on top of CIBP from 6756'-6800'.
7. Perforate Blinebry from 5848'-6058'.
8. Sand frac with 135,000 lbs. of sand.
9. Return to production.

14. I hereby certify that the foregoing is true and correct

Signed

(This space for Federal or State office use)

Approved by  
Conditions of approval, if any:

Title Sr. Conservation Coordinator

Date 1/18/94

Title

Date 2/8/94

Title 18 U.S.C. Section 1001, makes it a crime for any person knowingly and willfully to make to any department or agency of the United States any false, fictitious or fraudulent statement or representations as to any matter within its jurisdiction.

\*See Instruction on Reverse Side

# PROPOSED DIAGRAM WARREN UNIT NO.3 NMFU

1980' FSL & 1980' FEL SEC. 29,  
T-20S, R-38E, LEA COUNTY, NM.

## SURFACE CASING

13 3/8", 48#, H-40 @ 262' w/250 sx  
TOC (CIRC)

## INTERMEDIATE CASING

9-5/8", 36# J-55  
@ 2989' W/ 625 SX  
TOC @ 1600'

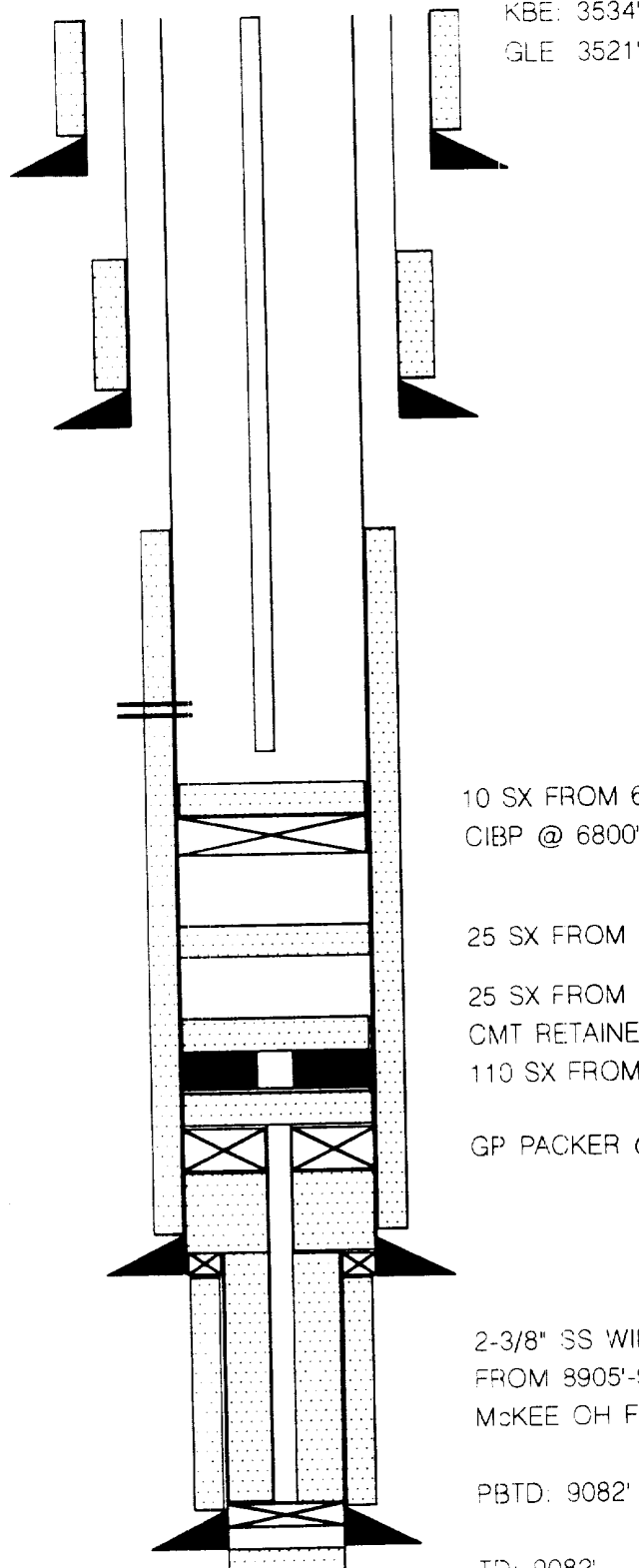
BLINEBRY PERFS. 5848'-6058'

## PRODUCTION CASING

7", 23#, 26#, 29#, N-80  
@ 8947' w/900 sx  
TOC @ 4330'

## PRODUCTION LINER

5-1/2" 15 5#, N-80  
@ 9048' w/PRE-CUT SLOTS



10 SX FROM 6756'-6800'  
CIBP @ 6800' (DRINKARD)

25 SX FROM 7720'-7830' (DEVONIAN)

25 SX FROM 8510'-8620'  
CMT RETAINER @ 8620' (MCKEE)  
110 SX FROM 8620'-9042'

GP PACKER @ 8626'

2-3/8" SS WIRE WRAPPED LINER  
FROM 8905'-9042'  
MCKEE OH FROM 8947'-9070'

PBTD: 9082'

TD: 9082'

DATE: 10-08-93

BY: JOE MILLER

RECEIVED

SEP 9 1894

OFFICE

Submit to Appropriate  
District Office  
State Lease - 4 copies  
Fee Lease - 3 copies

State of New Mexico  
Energy, Minerals and Natural Resources Department

Form C-102  
Revised 1-1-89

OIL CONSERVATION DIVISION

P.O. Box 2088  
Santa Fe, New Mexico 87504-2088

DISTRICT I  
P.O. Box 1980, Hobbs, NM 88240

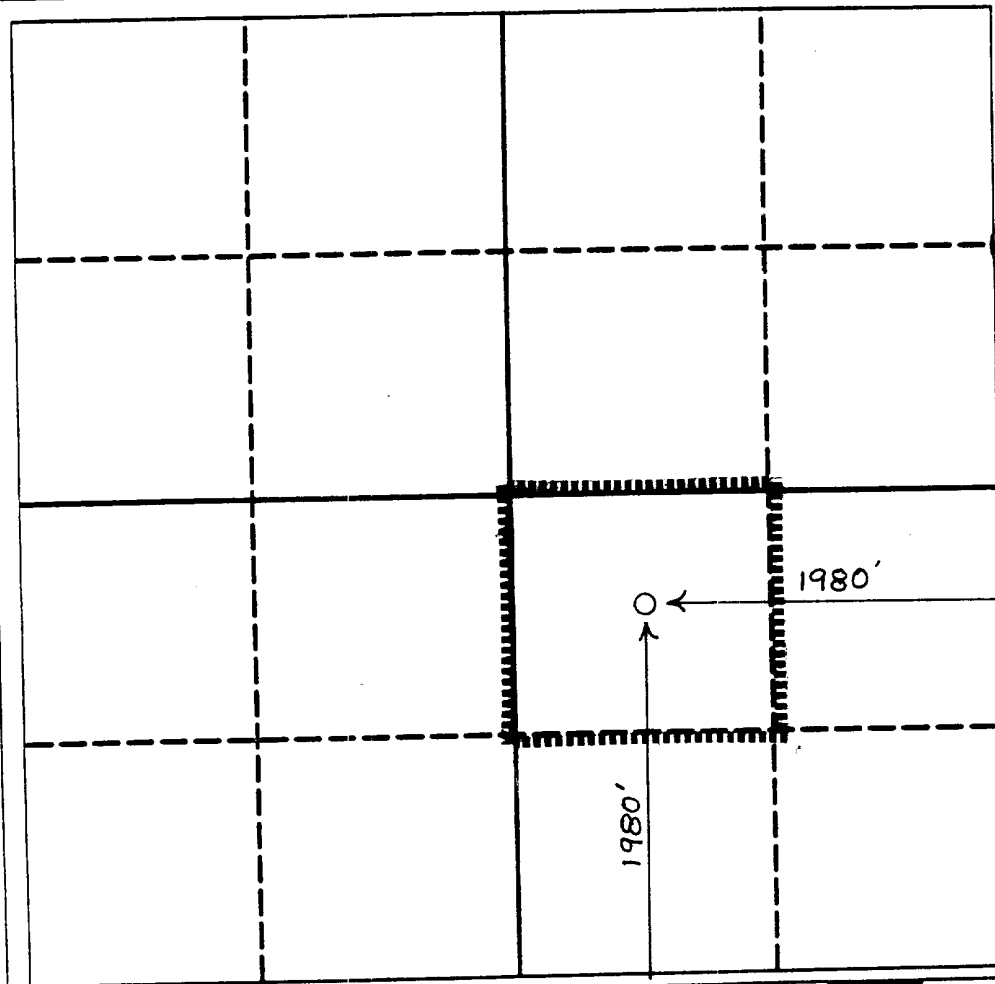
DISTRICT II  
P.O. Drawer DD, Artesia, NM 88210

DISTRICT III  
1000 Rio Brazos Rd., Aztec, NM 87410

WELL LOCATION AND ACREAGE DEDICATION PLAT  
All Distances must be from the outer boundaries of the section

Operator Conoco, Inc.		Lease Warren Unit Blinebry-Tubb		Well No. 3
Unit Letter J	Section 29	Township 20S	Range 38E	County Lea
Actual Footage Location of Well: 1980 feet from the South line and 1980 feet from the East line				
Ground level Elev. 3521'	Producing Formation Blinebry-Tubb		Pool Warren Blinebry-Tubb	Dedicated Acreage: 40 Acres

1. Outline the acreage dedicated to the subject well by colored pencil or hatchure marks on the plat below.
2. If more than one lease is dedicated to the well, outline each and identify the ownership thereof (both as to working interest and royalty).
3. If more than one lease of different ownership is dedicated to the well, have the interest of all owners been consolidated by communitization, unitization, force-pooling, etc.?  
☐ Yes ☐ No If answer is "yes" type of consolidation \_\_\_\_\_  
If answer is "no" list the owners and tract descriptions which have actually been consolidated. (Use reverse side of this form if necessary.) \_\_\_\_\_  
No allowable will be assigned to the well until all interests have been consolidated (by communitization, unitization, forced-pooling, or otherwise) or until a non-standard unit, eliminating such interest, has been approved by the Division.



OPERATOR CERTIFICATION

I hereby certify that the information contained herein is true and complete to the best of my knowledge and belief.

Signature  
Printed Name  
Jerry W. Hoover  
Position  
Sr. Conservation Coord.  
Company  
Conoco, Inc.  
Date  
1/18/94

SURVEYOR CERTIFICATION

I hereby certify that the well location shown on this plat was plotted from field notes of actual surveys made by me or under my supervision, and that the same is true and correct to the best of my knowledge and belief.

Date Surveyed  
Signature & Seal of Professional Surveyor  
Certificate No.

