

District I
1625 N. French Dr., Hobbs, NM 88240

District II
811 South First, Artesia, NM 88210

District III
1000 Rio Brazos Road, Aztec, NM 87410

District IV
1220 S. St. Francis Dr., Santa Fe, NM 87505

State of New Mexico
Energy Minerals and Natural Resources

Oil Conservation Division
1220 South St. Francis Dr.
Santa Fe, NM 87505

Form C-101
Revised March 17, 1999

Submit to appropriate District Office
State Lease - 6 Copies
Fee Lease - 5 Copies

☐ AMENDED REPORT

APPLICATION FOR PERMIT TO DRILL, RE-ENTER, DEEPEN, PLUGBACK, OR ADD A ZONE

¹ Operator Name and Address Xeric Oil & Gas Corporation P O Box 352 Midland, TX 79701		² OGRID Number 25482
³ Property Code 27978	⁵ Property Name State "A" SWD	³ API Number 30 - 025 - 07888
		⁶ Well No. 1

⁷ Surface Location

UL or lot no.	Section	Township	Range	Lot Idn	Feet from the	North/South line	Feet from the	East/West line	County
P	36	20S	38E		660	South	660	East	Lea

⁸ Proposed Bottom Hole Location If Different From Surface

UL or lot no.	Section	Township	Range	Lot Idn	Feet from the	North/South line	Feet from the	East/West line	County

⁹ Proposed Pool 1

¹⁰ Proposed Pool 2

¹¹ Work Type Code E	¹² Well Type Code S	¹³ Cable/Rotary C	¹⁴ Lease Type Code S	¹⁵ Ground Level Elevation 3562'
¹⁶ Multiple No	¹⁷ Proposed Depth 5100'	¹⁸ Formation San Andres	¹⁹ Contractor	²⁰ Spud Date 5/15/01

²¹ Proposed Casing and Cement Program

Hole Size	Casing Size	Casing weight/foot	Setting Depth	Sacks of Cement	Estimated TOC
17 1/2"	13 3/8"	48#	296'	350	Surface
9 5/8"	4 1/2"	11.6#	5100'	1250	Surface

²² Describe the proposed program. If this application is to DEEPEN or PLUG BACK, give the data on the present productive zone and proposed new productive zone.

Describe the blowout prevention program, if any. Use additional sheets if necessary.

Approval for RE-ENTRY and workover ONLY --
cannot dispose until approval from Santa Fe.

1. Remove dry hole marker and welded plate
2. Drill out surface plug in 13 3/8" casing.
3. Drill out plug @ 1980'-1915'
4. Run new 4 1/2" casing to 5100' and cement. Circulate to surface.
5. Perforate San Andres from (4650' to 5000') 1 spf
6. Acidize with 15% HCL
7. Install injection packer @ 4600' and plastic lined 2 3/8" tubing @ 4600'
8. Prepare surface facility for water injection and disposal.

²³ I hereby certify that the information given above is true and complete to the best of my knowledge and belief.

OIL CONSERVATION DIVISION

Signature: *Mitchell Morris*

Approved by:

Printed name: Mitchell Morris

Title:

Title: Production Analyst

Approval Date:

Expiration Date:

Date: 4/20/01

Phone: 915-683-3171

Conditions of Approval:

Attached ☐

Permit Expires 1 Year From Approval
Date Unless Drilling Underway

Re-Entry

DISTRICT I
P.O. Box 1990, Hobbs, NM 88241-1990

State of New Mexico
Energy, Minerals and Natural Resources Department

Form C-102
Revised February 10, 1994
Submit to Appropriate District Office
State Lease - 4 Copies
Fee Lease - 3 Copies

DISTRICT II
P.O. Drawer DD, Artesia, NM 88211-0719

OIL CONSERVATION DIVISION
P.O. Box 2088
Santa Fe, New Mexico 87504-2088

DISTRICT III
1000 Rio Brasos Rd., Aztec, NM 87410

DISTRICT IV
P.O. BOX 2088, SANTA FE, N.M. 87504-2088

WELL LOCATION AND ACREAGE DEDICATION PLAT

☐ AMENDED REPORT

API Number 30-025-07888	Pool Code 96121	Pool Name SWD; San Andres
Property Code 27978	Property Name STATE "A" SWD	Well Number 1
OGRID No. 25482	Operator Name XERIC OIL & GAS CORPORATION	Elevation 3562'

Surface Location

UL or lot No. P	Section 36	Township 20-S	Range 38-E	Lot Idn	Feet from the 660	North/South line SOUTH	Feet from the 660	East/West line EAST	County LEA
---------------------------	----------------------	-------------------------	----------------------	---------	-----------------------------	----------------------------------	-----------------------------	-------------------------------	----------------------

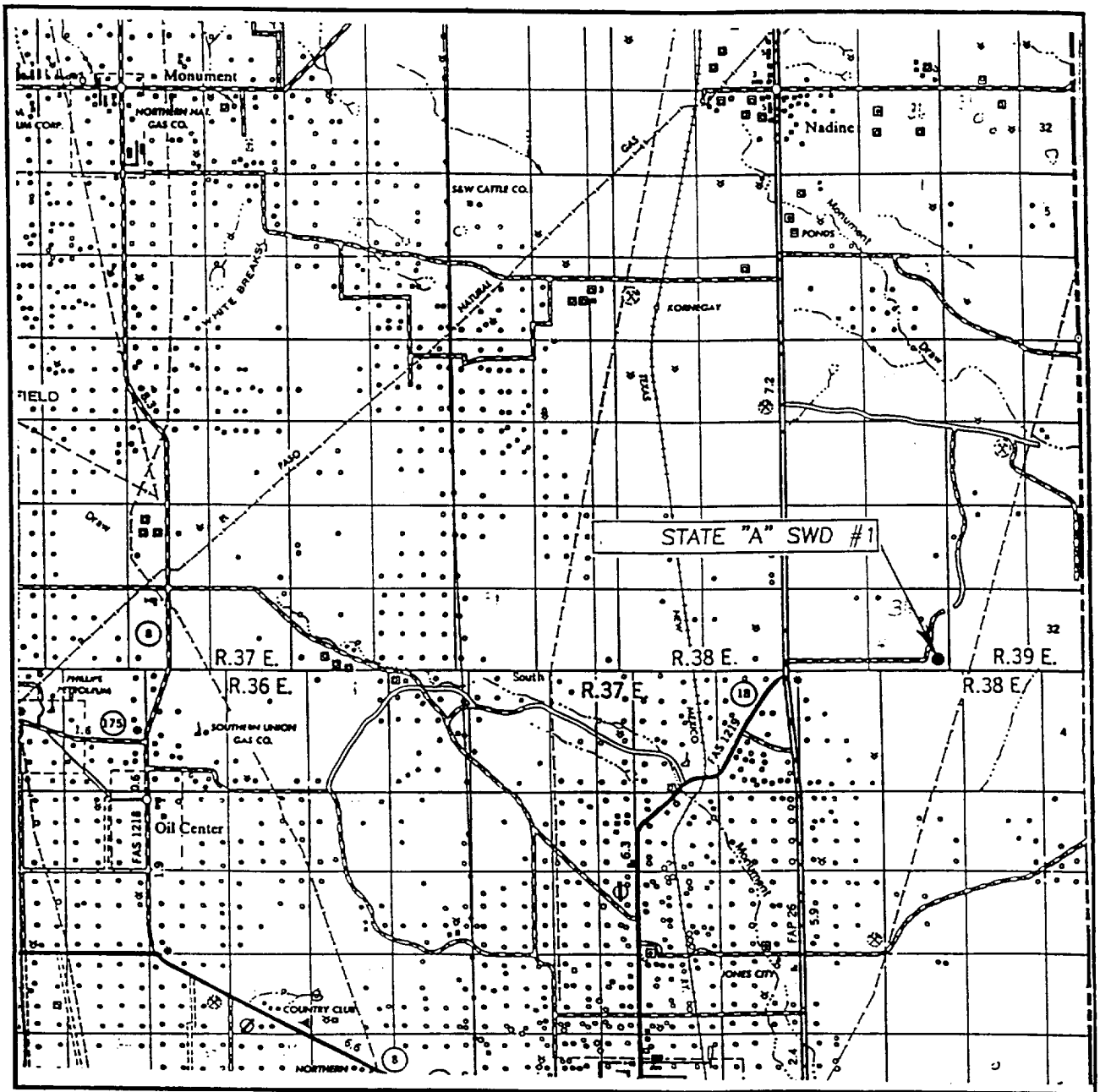
Bottom Hole Location If Different From Surface

UL or lot No.	Section	Township	Range	Lot Idn	Feet from the	North/South line	Feet from the	East/West line	County
Dedicated Acres	Joint or Infill	Consolidation Code	Order No.						

NO ALLOWABLE WILL BE ASSIGNED TO THIS COMPLETION UNTIL ALL INTERESTS HAVE BEEN CONSOLIDATED
OR A NON-STANDARD UNIT HAS BEEN APPROVED BY THE DIVISION

	OPERATOR CERTIFICATION I hereby certify the the information contained herein is true and complete to the best of my knowledge and belief. Litchell Martin Signature Litchell Martin Printed Name Production Analyst Title 4/23/01 Date	
	SURVEYOR CERTIFICATION I hereby certify that the well location shown on this plat was plotted from field notes of actual surveys made by me or under my supervision, and that the same is true and correct to the best of my belief. APRIL 17, 2001 Date Surveyed AWB Signature & Seal of Professional Surveyor Ronald J. Eidson 4/18/01 01-11-0476	
	Certificate No. RONALD J. EIDSON 3239 GARY EIDSON 12841	

VICINITY MAP



SCALE: 1" = 2 MILES

SEC. 36 TWP. 20-S RGE. 38-E

SURVEY N.M.P.M.

COUNTY LEA

DESCRIPTION 660' FSL & 660' FEL

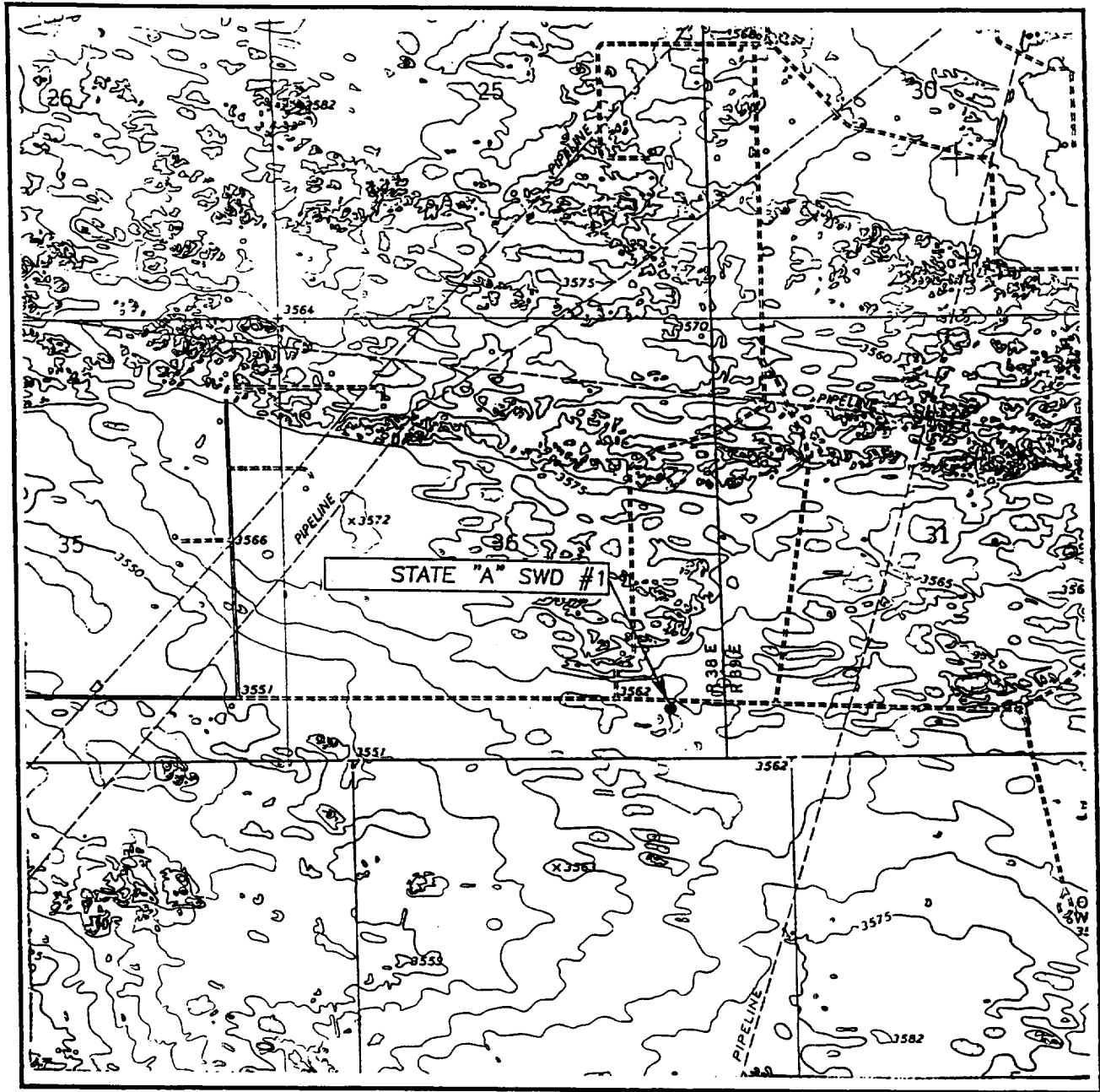
ELEVATION 3562'

OPERATOR XERIC OIL & GAS CORPORATION

LEASE STATE "A" SWD

JOHN WEST SURVEYING
HOBBS, NEW MEXICO
(505) 393-3117

LOCATION VERIFICATION MAP



SCALE: 1" = 2000'

CONTOUR INTERVAL: 5'
HOBBS SE, N.M.

SEC. 36 TWP. 20-S RGE. 38-E

SURVEY _____ N.M.P.M.

COUNTY _____ LEA

DESCRIPTION 660' FSL & 660' FEL

ELEVATION 3562'

OPERATOR XERIC OIL & GAS CORPORATION

LEASE STATE "A" SWD

U.S.G.S. TOPOGRAPHIC MAP
HOBBS SE, N.M.

JOHN WEST SURVEYING
HOBBS, NEW MEXICO
(505) 393-3117