

NEW MEXICO OIL CONSERVATION COMMISSION
WELL LOCATION AND ACREAGE DEDICATION PLAT

Form C-102
Supersedes C-128
Effective 1-1-65

All distances must be from the outer boundaries of the Section

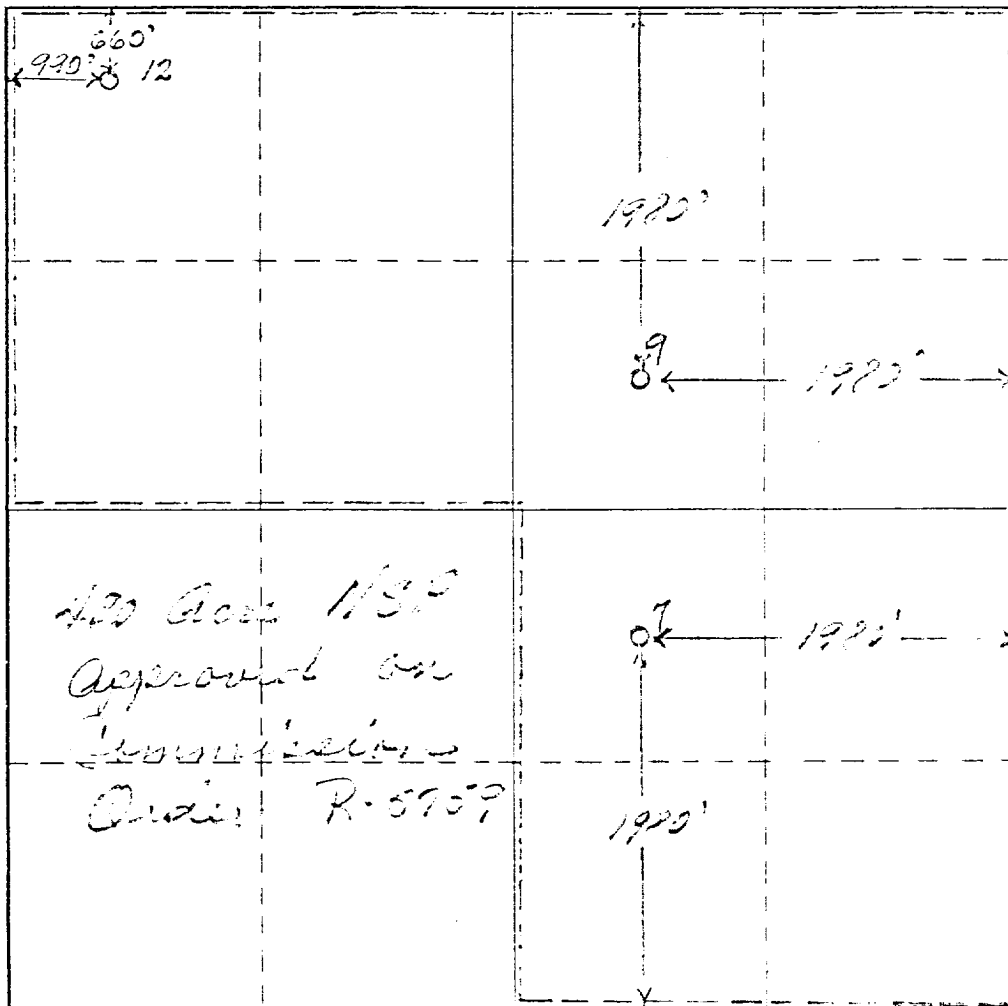
Operator <i>CONTINENTAL OIL COMPANY</i>		Lease <i>STATE J-2</i>		Well No. <i>9</i>	
Tract Letter <i>E</i>	Section <i>2</i>	Township <i>22 SOUTH</i>	Range <i>36 EAST</i>	County <i>LEA</i>	
Actual Footage Location of Well: <i>1980</i> feet from the <i>NORTH</i> line and <i>1980</i> feet from the <i>EAST</i> line					
Ground Level Elev. <i>3547</i>	Producing Formation <i>QUEEN</i>		Pool <i>ELEMENT YATES TRRS. JN.</i>	Dedicated Acreage: <i>480</i> Acres	

1. Outline the acreage dedicated to the subject well by colored pencil or hachure marks on the plat below.
2. If more than one lease is dedicated to the well, outline each and identify the ownership thereof (both as to working interest and royalty).
3. If more than one lease of different ownership is dedicated to the well, have the interests of all owners been consolidated by communitization, unitization, force-pooling, etc?

☐ Yes ☐ No If answer is "yes," type of consolidation _____

If answer is "no," list the owners and tract descriptions which have actually been consolidated. (Use reverse side of this form if necessary.) _____

No allowable will be assigned to the well until all interests have been consolidated (by communitization, unitization, forced-pooling, or otherwise) or until a non-standard unit, eliminating such interests, has been approved by the Commission.



CERTIFICATION

I hereby certify that the information contained herein is true and complete to the best of my knowledge and belief.

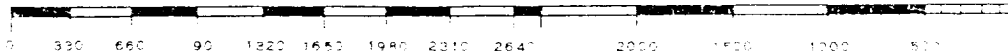
Name
Ben H. Lee
Position
Surveyor
Company
Continental Oil Co.
Date
7-7-77

I hereby certify that the well location shown on this plat was plotted from field notes of actual surveys made by me or under my supervision, and that the same is true and correct to the best of my knowledge and belief.

Date Surveyed

Registered Professional Engineer and/or Land Surveyor

Certificate No.



**NEW MEXICO OIL CONSERVATION COMMISSION
WELL LOCATION AND ACREAGE DEDICATION PLAT**

Form C-102
Supersedes C-128
Effective 1-1-65

All distances must be from the outer boundaries of the Section.

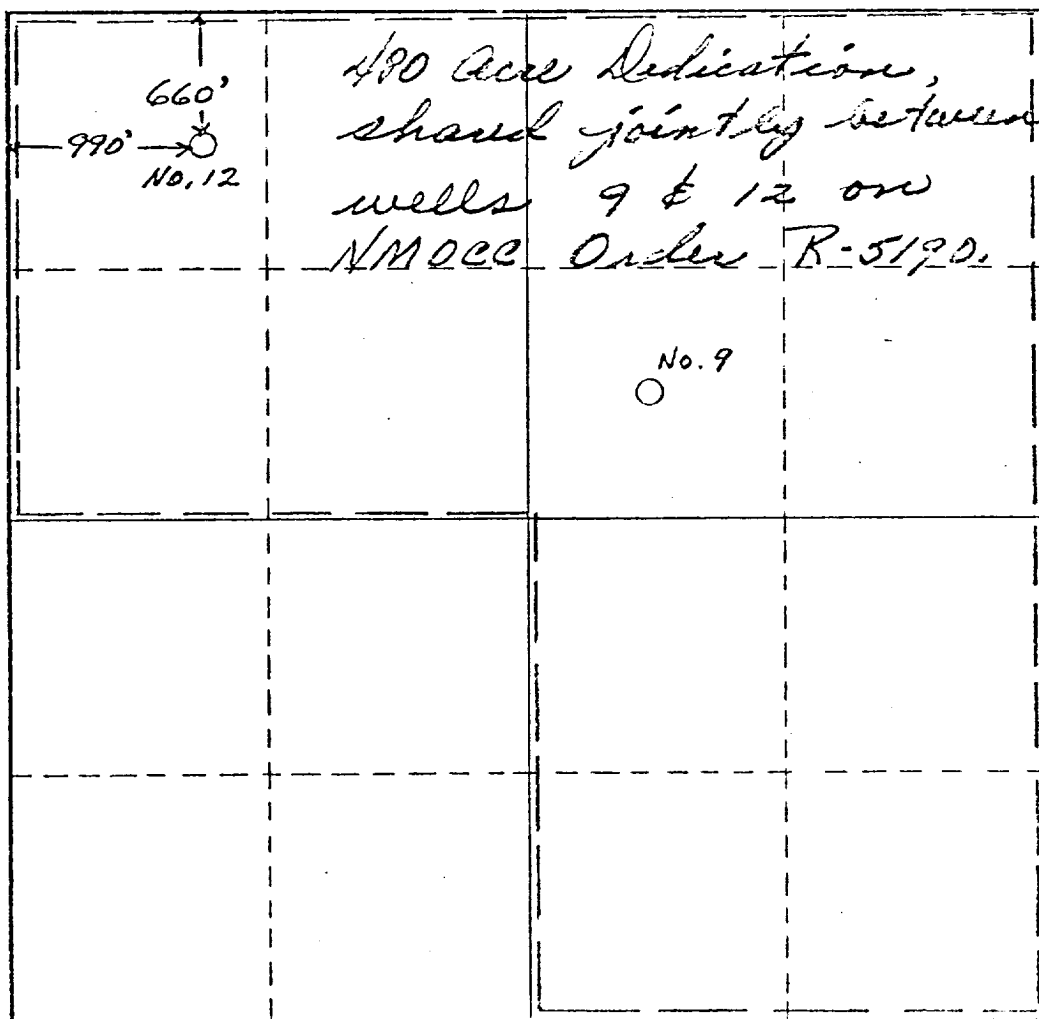
Operator CONTINENTAL OIL CO.			Lease STATE J-2		Well No. 12
Unit Letter D	Section 2	Township 22-S	Range 36 E	County LEA	
Actual Footage Location of Well: 660' feet from the NORTH line and 990' feet from the WEST line					
Ground Level Elev. 3565	Producing Formation QUEEN	Pool EUMONT YATES SEVEN RIVERS QUEEN (GAS)		Dedicated Acreage: Acres	

1. Outline the acreage dedicated to the subject well by colored pencil or hatchure marks on the plat below.
2. If more than one lease is dedicated to the well, outline each and identify the ownership thereof (both as to working interest and royalty).
3. If more than one lease of different ownership is dedicated to the well, have the interests of all owners been consolidated by communitization, unitization, force-pooling, etc?

☐ Yes ☐ No If answer is "yes," type of consolidation _____

If answer is "no," list the owners and tract descriptions which have actually been consolidated. (Use reverse side of this form if necessary.) _____

No allowable will be assigned to the well until all interests have been consolidated (by communitization, unitization, forced-pooling, or otherwise) or until a non-standard unit, eliminating such interests, has been approved by the Commission.



CERTIFICATION

I hereby certify that the information contained herein is true and complete to the best of my knowledge and belief.

Name
C. H. Bradden
Position
S.R. STAFF ASST.
Company
CONTINENTAL OIL CO.
Date
APRIL 2, 1976

I hereby certify that the well location shown on this plat was plotted from field notes of actual surveys made by me or under my supervision, and that the same is true and correct to the best of my knowledge and belief.

Date Surveyed _____

Registered Professional Engineer and/or Land Surveyor _____

Certificate No. _____

NEW MEXICO
OIL CONSERVATION COMMISSION

Form C-128

Well Location and/or Gas Proration Plat

Date February 28, 1957

Operator Continental Oil Company Lease State J-2

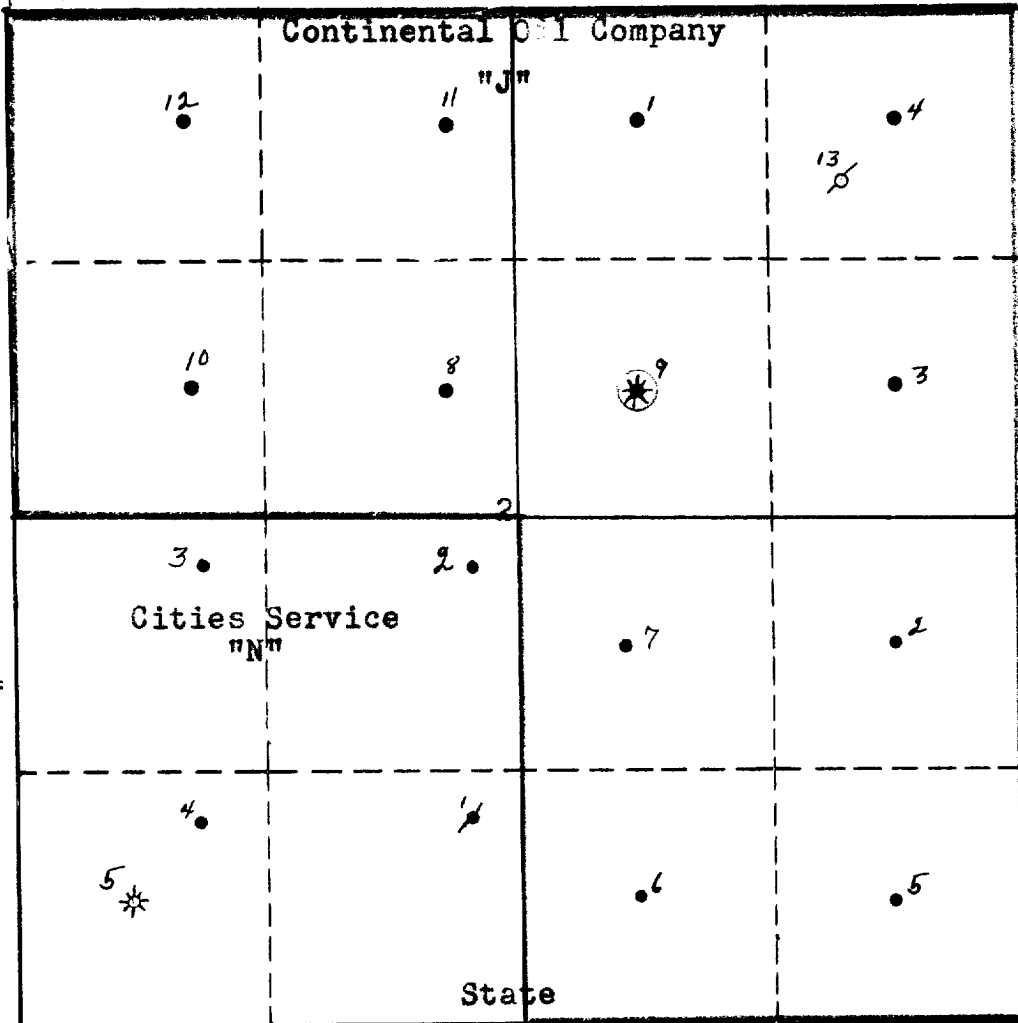
Well No. 9 Section 2 Township 22-S Range 36-E NMPM

Located 1980 Feet From North Line, 1980 Feet From East Line,

Lea County, New Mexico. G. L. Elevation 3549'

Name of Producing Formation Queen Pool Eumont Dedicated Acreage 481
NSP # 342

(Note: All distances must be from outer boundaries of Section)



NOTE

This section of form is to be used for gas wells only.



SCALE: 1"=1000'

1. Is this Well a Dual Comp.? Yes X No .
2. If the answer to Question 1 is yes, are there any other dually completed wells within the dedicated acreage? Yes No X.

Name J. R. Parker
Position District Superintendent
Representing Continental Oil Company
Address Box 68, Eunice, New Mexico

This is to certify that the above plat was prepared from field notes of actual surveys made by me or under my supervision and that the same are true and correct to the best of my knowledge and belief.

Date Surveyed

Registered Professional Engineer and/or Land Surveyor

OPRS:ELLY 3559 KB sub-s

F.R.C. 7-23-85 OWWG

PD 3878 WO

(Orig. Continental Oil Co., Cmp 8-11-40 from (Grayburg) Perf 3712-3839, OTH 3839; OWDD & Re-Cmp 12-11-47 thru (Grayburg) Perfs 3825-48, OTH 3878; (WWO & Re-Cmp 7-11-57 dual thru (Queen) Perfs 3432-3612 & (Grayburg) Perfs 3825-48, OTH 3878)

-18-37 CD 3878; Complete

Perf. (Grayburg) 3767-70, 3773-76, 3778-81,
3786-89, 3796-3811, 3818-23, 3825-30, 3838-
42, 3856-59, 3862-67

Acid (3767-3867) 3360 gms.

Acid (3432-3612) 252 gals.

LOGS RUN: GRL, CCL, CCH

COMPLETION ISSUED

1997, 1998, 1999, 2000, 2001, 2002, 2003, 2004, 2005, 2006, 2007, 2008, 2009, 2010, 2011, 2012, 2013, 2014, 2015, 2016, 2017, 2018, 2019, 2020, 2021, 2022, 2023, 2024, 2025, 2026, 2027, 2028, 2029, 2030, 2031, 2032, 2033, 2034, 2035, 2036, 2037, 2038, 2039, 2040, 2041, 2042, 2043, 2044, 2045, 2046, 2047, 2048, 2049, 2050, 2051, 2052, 2053, 2054, 2055, 2056, 2057, 2058, 2059, 2060, 2061, 2062, 2063, 2064, 2065, 2066, 2067, 2068, 2069, 2070, 2071, 2072, 2073, 2074, 2075, 2076, 2077, 2078, 2079, 2080, 2081, 2082, 2083, 2084, 2085, 2086, 2087, 2088, 2089, 2090, 2091, 2092, 2093, 2094, 2095, 2096, 2097, 2098, 2099, 2100, 2101, 2102, 2103, 2104, 2105, 2106, 2107, 2108, 2109, 2110, 2111, 2112, 2113, 2114, 2115, 2116, 2117, 2118, 2119, 2120, 2121, 2122, 2123, 2124, 2125, 2126, 2127, 2128, 2129, 2130, 2131, 2132, 2133, 2134, 2135, 2136, 2137, 2138, 2139, 2140, 2141, 2142, 2143, 2144, 2145, 2146, 2147, 2148, 2149, 2150, 2151, 2152, 2153, 2154, 2155, 2156, 2157, 2158, 2159, 2160, 2161, 2162, 2163, 2164, 2165, 2166, 2167, 2168, 2169, 2170, 2171, 2172, 2173, 2174, 2175, 2176, 2177, 2178, 2179, 2180, 2181, 2182, 2183, 2184, 2185, 2186, 2187, 2188, 2189, 2190, 2191, 2192, 2193, 2194, 2195, 2196, 2197, 2198, 2199, 2200, 2201, 2202, 2203, 2204, 2205, 2206, 2207, 2208, 2209, 2210, 2211, 2212, 2213, 2214, 2215, 2216, 2217, 2218, 2219, 2220, 2221, 2222, 2223, 2224, 2225, 2226, 2227, 2228, 2229, 2230, 2231, 2232, 2233, 2234, 2235, 2236, 2237, 2238, 2239, 2240, 2241, 2242, 2243, 2244, 2245, 2246, 2247, 2248, 2249, 2250, 2251, 2252, 2253, 2254, 2255, 2256, 2257, 2258, 2259, 2260, 2261, 2262, 2263, 2264, 2265, 2266, 2267, 2268, 2269, 2270, 2271, 2272, 2273, 2274, 2275, 2276, 2277, 2278, 2279, 2280, 2281, 2282, 2283, 2284, 2285, 2286, 2287, 2288, 2289, 2290, 2291, 2292, 2293, 2294, 2295, 2296, 2297, 2298, 2299, 2300, 2301, 2302, 2303, 2304, 2305, 2306, 2307, 2308, 2309, 2310, 2311, 2312, 2313, 2314, 2315, 2316, 2317, 2318, 2319, 2320, 2321, 2322, 2323, 2324, 2325, 2326, 2327, 2328, 2329, 2330, 2331, 2332, 2333, 2334, 2335, 2336, 2337, 2338, 2339, 2340, 2341, 2342, 2343, 2344, 2345, 2346, 2347, 2348, 2349, 2350, 2351, 2352, 2353, 2354, 2355, 2356, 2357, 2358, 2359, 2360, 2361, 2362, 2363, 2364, 2365, 2366, 2367, 2368, 2369, 2370, 2371, 2372, 2373, 2374, 2375, 2376, 2377, 2378, 2379, 2380, 2381, 2382, 2383, 2384, 2385, 2386, 2387, 2388, 2389, 2390, 2391, 2392, 2393, 2394, 2395, 2396, 2397, 2398, 2399, 2400, 2401, 2402, 2403, 2404, 2405, 2406, 2407, 2408, 2409, 2410, 2411, 2412, 2413, 2414, 2415, 2416, 2417, 2418, 2419, 2420, 2421, 2422, 2423, 2424, 2425, 2426, 2427, 2428, 2429, 2430, 2431, 2432, 2433, 2434, 2435, 2436, 2437, 2438, 2439, 2440, 2441, 2442, 2443, 2444, 2445, 2446, 2447, 2448, 2449, 2450, 2451, 2452, 2453, 2454, 2455, 2456, 2457, 2458, 2459, 2460, 2461, 2462, 2463, 2464, 2465, 2466, 2467, 2468, 2469, 2470, 2471, 2472, 2473, 2474, 2475, 2476, 2477, 2478, 2479, 2480, 2481, 2482, 2483, 2484, 2485, 2486, 2487, 2488, 2489, 2490, 2491, 2492, 2493, 2494, 2495, 2496, 2497, 2498, 2499, 2500, 2501, 2502, 2503, 2504, 2505, 2506, 2507, 2508, 2509, 2510, 2511, 2512, 2513, 2514, 2515, 2516, 2517, 2518, 2519, 2520, 2521, 2522, 2523, 2524, 2525, 2526, 2527, 2528, 2529, 2530, 2531, 2532, 2533, 2534, 2535, 2536, 2537, 2538, 2539, 2540, 2541, 2542, 2543, 2544, 2545, 2546, 2547, 2548, 2549, 2550, 2551, 2552, 2553, 2554, 2555, 2556, 2557, 2558, 2559, 2560, 2561, 2562, 2563, 2564, 2565, 2566, 2567, 2568, 2569, 2570, 2571, 2572, 2573, 2574, 2575, 2576, 2577, 2578, 2579, 2580, 2581, 2582, 2583, 2584, 2585, 2586, 2587, 2588, 2589, 2590, 2591, 2592, 2593, 2594, 2595, 2596, 2597, 2598, 2599, 2600, 2601, 2602, 2603, 2604, 2605, 2606, 2607, 2608, 2609, 2610, 2611, 2612, 2613, 2614, 2615, 2616, 2617, 2618, 2619, 2620, 2621, 2622, 2623, 2624, 2625, 2626, 2627, 2628, 2629, 2630, 2631, 2632, 2633, 2634, 2635, 2636, 2637, 2638, 2639, 2640, 2641, 2642, 2643, 2644, 2645, 2646, 2647, 2648, 2649, 2650, 2651, 2652, 2653, 2654, 2655, 2656, 2657, 2658, 2659, 2660, 2661, 2662, 2663, 2664, 2665, 2666, 2667, 2668, 2669, 2670, 2671, 2672, 2673, 2674, 2675, 2676, 2677, 2678, 26

NY 30-025-70466-83

STATE NM
AP MN 08748
MAP
CITY
4-3-37 NM
Re 9-14-81

[illegible]

3559 DF

sub-s

F.R.C. 4-17-82 OWWO
PD 3878 WO (Queen & Grayburg)
(Orig. Continental Oil Co., comp 8-11-60
from (Grayburg) OH 3712-3839, OTD 3839;
OWDD & Re-cmp 12-11-47 thru (Grayburg) Perfs
3825-66, OTD 3878; OWWO & Re-cmp 2-23-57 dual
thru (Queen) Perfs 3432-3612 & (Grayburg)
Perfs 3825-66, OTD 3878)
TD 3878; Complete
CO to 3878
Perf (Grayburg) 3761-70, 3773-76, 3778-81,
3786-89, 3796-3808, 3809-11, 3818-23, 3825-
30, 3838-42, 3856-59
Acid (3761-3866) 3360 gals
Acid (3432-3612) 252 gals
(Grayburg Zone (3761-3866) Packed off

4-3-37 NM

LEA
CONOCO INC.

Eumont & Arrowhead
9 State "J-2"
Sec 2, T22S, R36E

NM
Page #2

4-17-82 COMPLETION ISSUED

4-3-37 NM
IC 30-025-70380-82
