

Gulf Oil Exploration and Production Company

R. C. Anderson
PRODUCTION MANAGER, HOBBS AREA

February 10, 1982

P. O. Box 670
Hobbs, NM 88240

Re: J. F. Janda (NCT-F) #7
Unit K, Section 4-T22S-R36E
Lea County, New Mexico

Mr. Joe D. Ramey, Director
New Mexico Oil Conservation Division
P. O. Box 2088
Santa Fe, New Mexico 87501

Dear Sir:

Your administrative approval is requested for an exception to Rule No. 303-C to permit down-hole commingling of Jalmat Tansill Yates Seven Rivers (Pro. Gas) and Eunice Seven Rivers Queen, South production in the subject well.

Please find enclosed all pertinent data regarding this application as outlined in Rule No. 303-C.

Yours very truly,


R. C. ANDERSON

JNC/skj
Enclosures

cc: C. F. Kalteyer-Midland



A DIVISION OF GULF OIL CORPORATION

Re: J. F. Janda (NCT-F) #7
Unit K, Section 4-T22S-R36E
Lea County, New Mexico

Approval is requested for an exception to Rule No. 303-C to permit downhole commingling of Jalmat Tansill Yates Seven Rivers (Pro. Gas) and Eunice Seven Rivers Queen, South production in the subject well.

The J. F. Janda (NCT-F) #7 was dually completed in the Jalmat Gas and Eunice South under Administrative Order DC-483, dated August 4, 1957. Production from the two zones is currently commingled above ground under Commingling Order R1767 dated 9-9-60.

The fluids show no evidence of incompatibility; therefore, downhole commingling is not expected to result in reservoir damage. Ownership in the two pools is common and correlative rights will not be violated.

Currently, the Eunice South is being pumped and the Jalmat Gas was flowing. The Jalmat Gas Zone was temporarily abandoned as a frequent need for swabbing water made the zone uneconomical to produce. If an exception is approved, the existing pumping equipment will be used to produce both zones.

Should secondary recovery operation become practical in the future, the two zones could be separated at that time without damaging either reservoir.

RECEIVED

MAR - 8 1982

O.C.D.
HOBBS OFFICE

OFFSET OPERATORS

ARCO
P. O. Box 1610
Midland, TX 79701

Texas Pacific Oil Co.
P. O. Box 4067
Midland, TX 79701

1. Operator: Gulf Oil Corporation, P. O. Box 670, Hobbs, New Mexico 88240
2. Lease, Well and Location: J. F. Janda (NCT-F) #7, Unit K, 1980' FSL and 1980' FWL, Section 4-T22S-R36E, Lea County, New Mexico.
3. Producing Zones: Currently producing the Eunice Seven Rivers Queen, South Pool, which is to be commingled with the Jalmat Gas Pool, if approved. The Jalmat has not been produced since December, 1978.
4. Decline Curve: See Attached Sheet
5. Bottom Hole Pressures: See Attached Sheet
6. Fluid Characteristics: The Eunice South and Jalmat are currently commingled in surface facilities located on the J. F. Janda (NCT-F) Lease per commingling order R1767, dated 9-9-60. To date, there has been no evidence of fluid incompatibility.
7. Well History: The well was spudded 10-21-56 and drilled to a total depth of 3885'. Five and one-half inch production casing was set at 3885' with top of cement at 640'.

11-5-56, the gross interval 3812-3854' was perforated with 4½" JHPF. Squeezed formation with 250 gallons of mud acid and fractured with 10,000 gallons of refined oil containing 1# SPG. (Eunice South Zone)

8-15-57, the interval 3784-3808' was perforated with 4½" JHPF (Eunice South Zone) Squeezed 250 gallons of mud acid into formation and fractured with 10,000 gallons of refined oil containing 1# SPG.

8-20-57, Jalmat Gas Zone perforated in the gross interval 3185-3320' with 2½" JHPF. Squeezed 500 gallons mud acid into perfs 3185-3320' and fractured the Jalmat with 20,000 gallons refined oil containing 1# SPG.

12-17-57, treated Jalmat Zone with 80 gallons of Aquaness 6/26.

3-31-64, equipped Eunice South to pump.

10-6-64, squeezed 1000 gallons 15% NEA into Jalmat perfs 3185-3320'.

1-18-65, treated Jalmat perfs with 2000 gallons of 15% NEA.

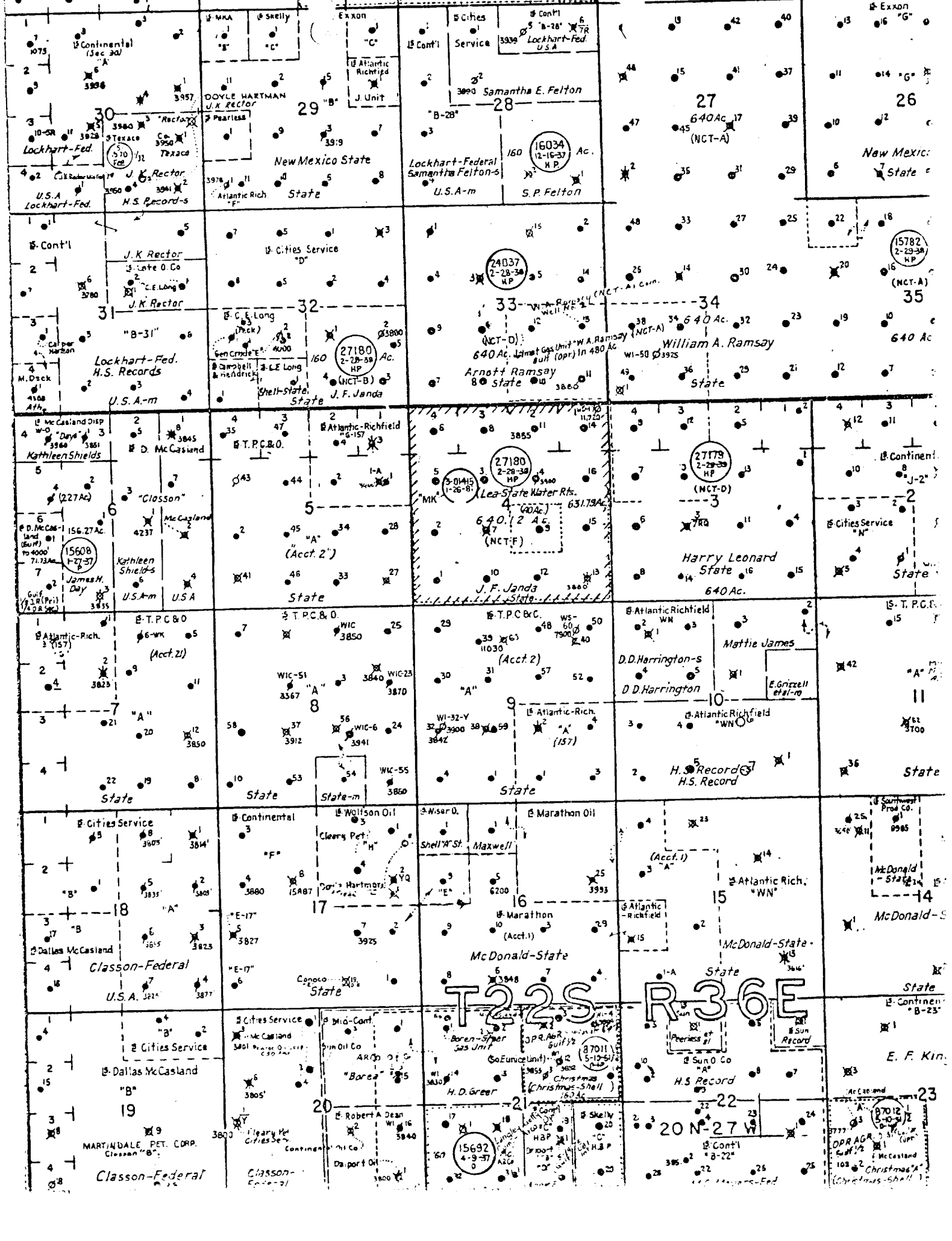
4-15-80, treated Eunice South perfs with 750 gallons of 15% NEA double inhibited HCl.

8. Value of Commingled Fluids: Eunice South and Jalmat Gas production is being commingled in surface storage facilities on the subject lease per order R1767 dated 9-9-60; therefore, downhole commingling will not effect the price.
9. Current Production: See Attached C-116

Suggested allocation of production

	<u>Oil</u>	<u>Gas</u>
Jalmat	0%	97%
Eunice South	100%	3%

The suggested allocation of produced hydrocarbons is based on the percentages of oil and gas produced on the latest C-116.



29

28

27

26

32

33

34

35

5

4

3

2

8

9

10

11

17

16

15

14

20

21

22

23

T22S R36E

15692
4-9-37
0

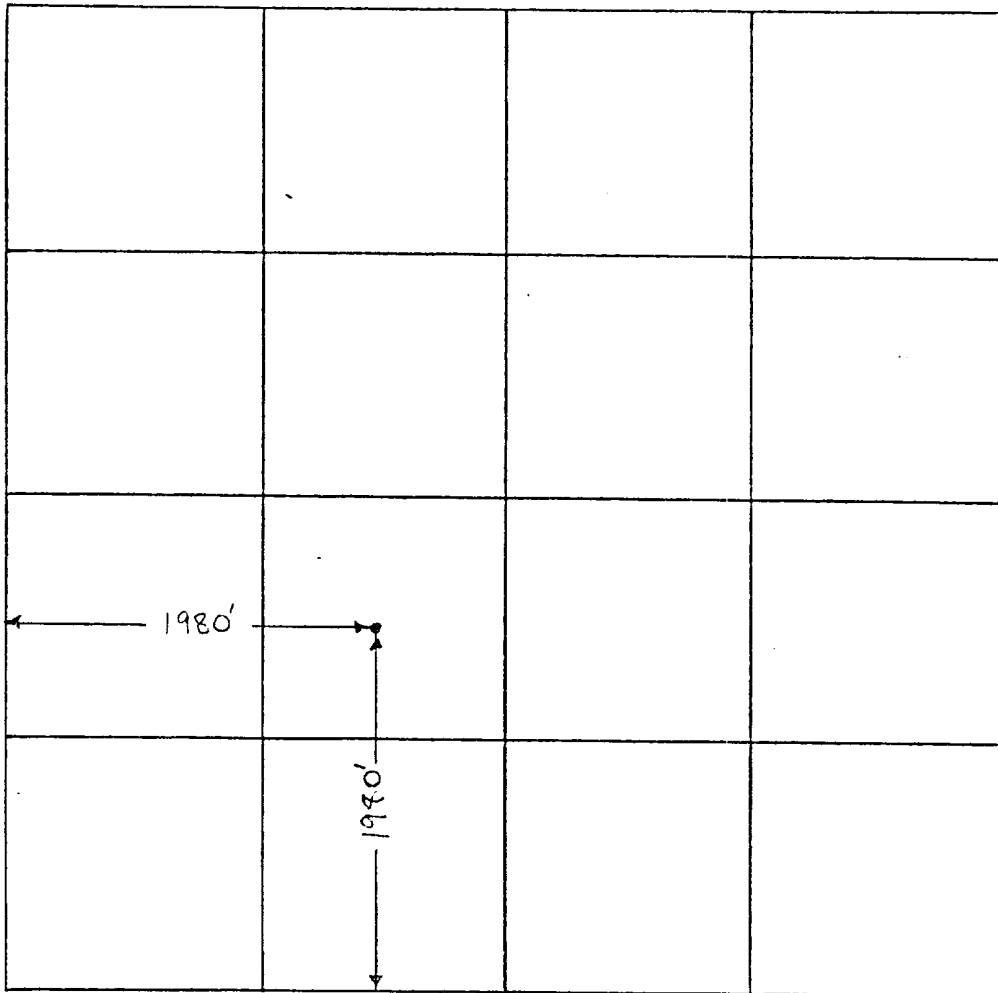
87012
5-20-37
2

20 N-27 W

87777
5-20-37
1
DPR AGA
103-2
McCasland
Christmas-Shell

1075 Continental (Sec 20) 3956
3957
3980 Texaco Co. 3950 Texaco
3951
3952
3953
3954
3955
3956
3957
3958
3959
3960
3961
3962
3963
3964
3965
3966
3967
3968
3969
3970
3971
3972
3973
3974
3975
3976
3977
3978
3979
3980
3981
3982
3983
3984
3985
3986
3987
3988
3989
3990
3991
3992
3993
3994
3995
3996
3997
3998
3999
4000
4001
4002
4003
4004
4005
4006
4007
4008
4009
4010
4011
4012
4013
4014
4015
4016
4017
4018
4019
4020
4021
4022
4023
4024
4025
4026
4027
4028
4029
4030
4031
4032
4033
4034
4035
4036
4037
4038
4039
4040
4041
4042
4043
4044
4045
4046
4047
4048
4049
4050
4051
4052
4053
4054
4055
4056
4057
4058
4059
4060
4061
4062
4063
4064
4065
4066
4067
4068
4069
4070
4071
4072
4073
4074
4075
4076
4077
4078
4079
4080
4081
4082
4083
4084
4085
4086
4087
4088
4089
4090
4091
4092
4093
4094
4095
4096
4097
4098
4099
4100

Section 4



J.F. Janda (NCT-F) #7

1970' FSL and 1970' FWL

Sec 4 - T22S - R36E

RECEIVED

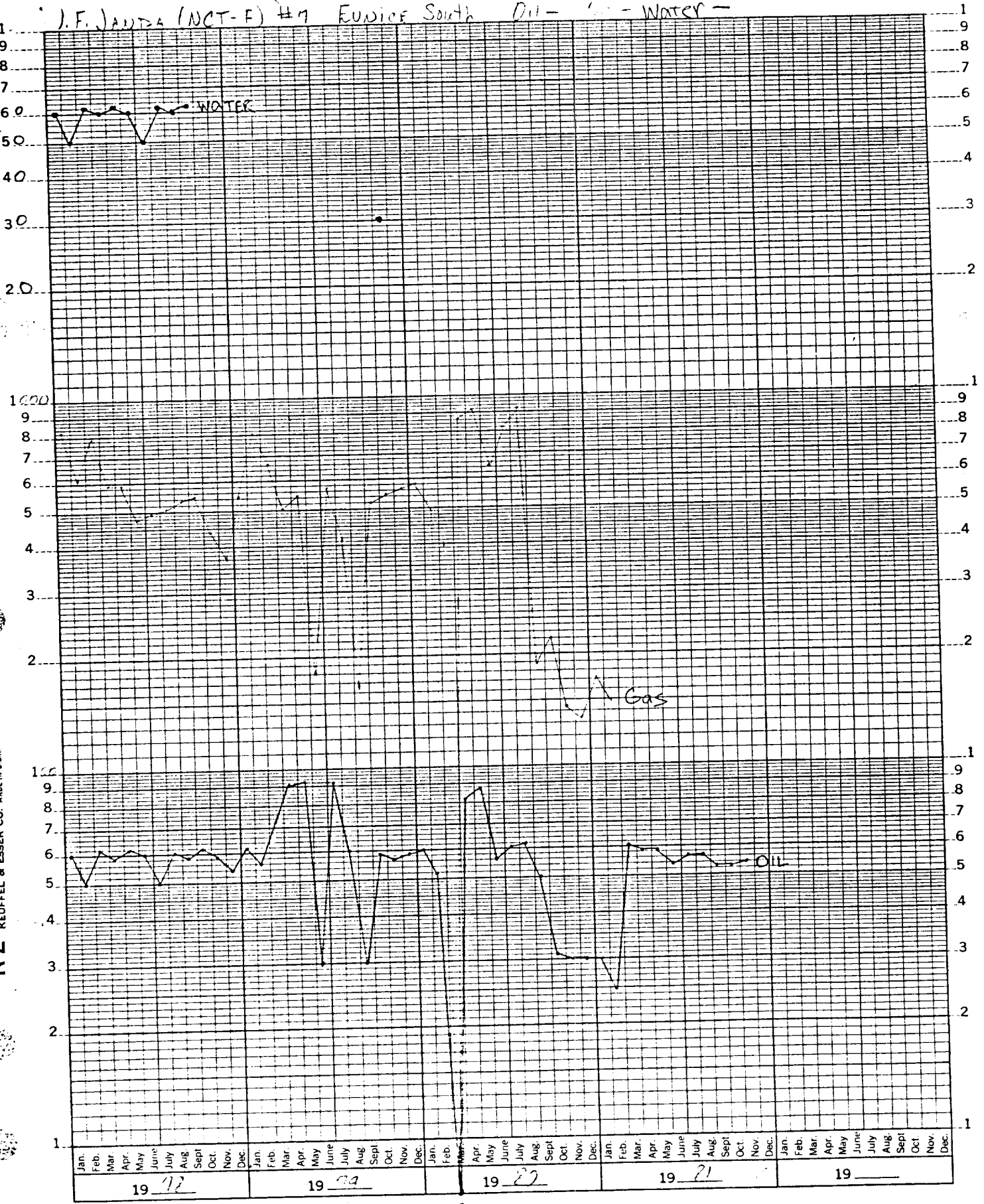
MAR 5 1982

HOBBE OFFICE

J.F. JANDA (NCT-F) #7 EUNICE South Oil - Gas - Water -

46 6690

5 YEARS BY MONTHS x 3 LOG CYCLES
KEUFFEL & ESSER CO. MADE IN U.S.A.



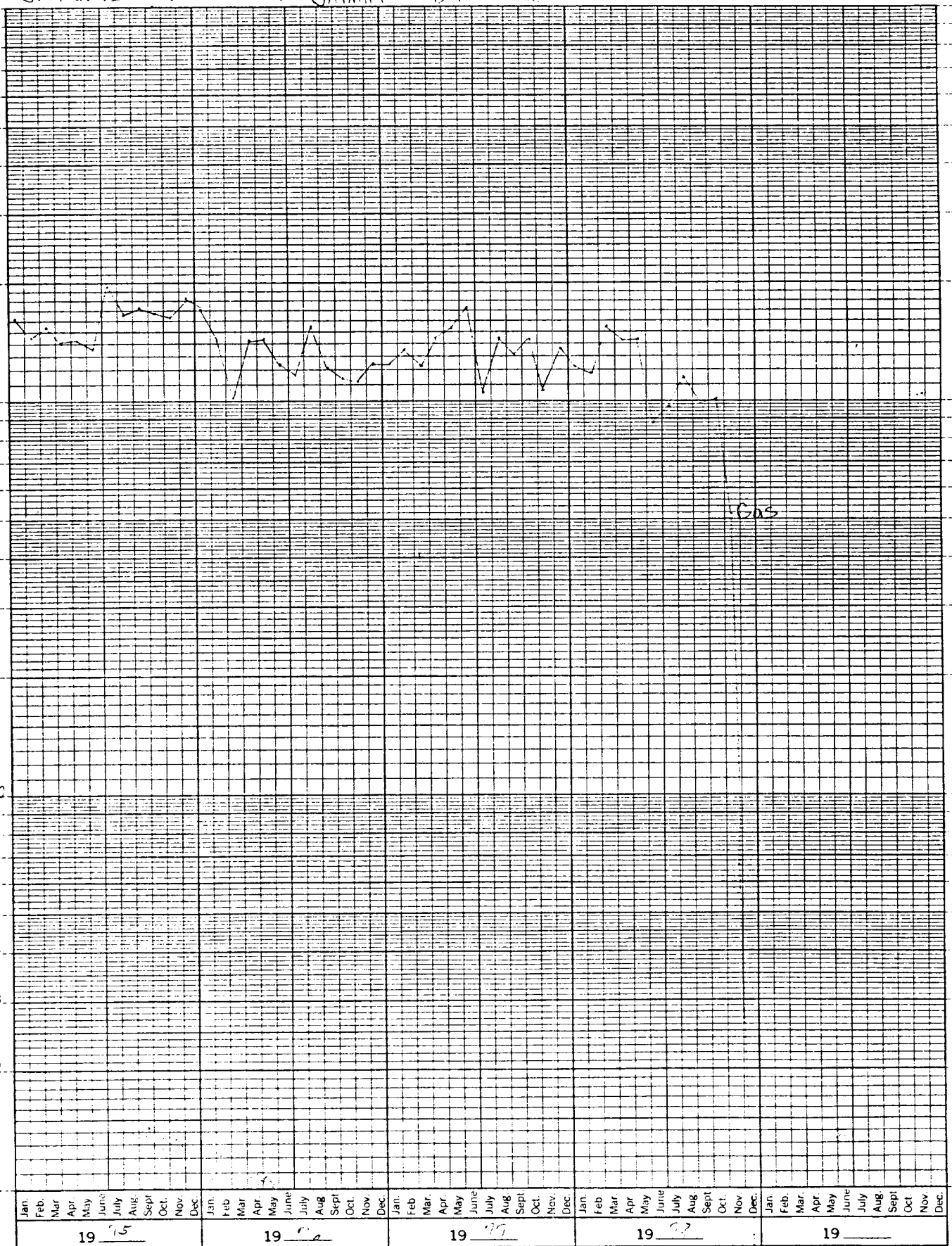
Oil - BO/month
Gas - MCF/month

12220

J.F. JAVDA (NCT-F) #7 Jalmat Oil - Gas

46 6690

5 YEARS BY MONTHS x 3 LOG CYCLES
KEUFFEL & ESSER CO. MADE IN U.S.A.



Gas

Gas - MCF/month

5

GAS-OIL RATIO TESTS

Operator: Gulf Oil Corporation Pool: Lea County: Lea
 Lease Name: Box 670, Hobbs, N.M. 88240 Eunice 7 Rivers Queen South

TYPE OF TEST - (X) Scheduled Completion Special

WELL NO.	LOCATION			DATE OF TEST	CHOKE SIZE	T.B.G. PRESS.	DAILY ALLOWABLE	LENGTH OF TEST HOURS	PROD. DURING TEST			GAS - OIL RATIO CU.FT/B.			
	U	S	T						R	WATER BBL.S.	GRAV. OIL		OIL BBL.S.	GAS M.C.F.	
7	K	4	22	36	1-1-82	P	2"W.O.	28	2	24	0	35.2	7	4.0	571

* Request Allowable Increase

I hereby certify that the above information is true and complete to the best of my knowledge and belief.

Paul G. Jackson
(Signature)
Well Tester
1-7-82
(Date)

No well will be assigned an allowable greater than the amount of oil produced on the official test.
 During gas-oil ratio test, each well shall be produced at a rate not exceeding the top unit allowable for the pool in which well is located by more than 25 percent. Operator is encouraged to take advantage of this 25 percent tolerance in order that well can be assigned increased allowable when authorized by the Division.
 Gas volumes must be reported in MCF measured at a pressure base of 15.025 psia and a temperature of 60° F. Specific gravity base will be 0.60.
 Report casing pressure in lieu of tubing pressure for any well producing through casing.
 Well original and one copy of this report to the district office of the New Mexico Oil Conservation Division in accordance with Rule 301 and appropriate pool rules.

RECEIVED

MAR - 4 1982

HOURS OFFICE

NEW MEXICO OIL CONSERVATION COMMISSION
RESERVOIR PRESSURE REPORT

TYPE OF REPORT - (X)
Initial Completion
Special
General Survey

Operator	South Eunice	County	Lea	Date	12/23/81
Company	Gulf Oil Exploration & Production Co.	Operator	Lea Gravity	Operator	
Address	Box 670	Operator		Operator	
State	New Mexico	Operator		Operator	
Well No.	88240	Operator		Operator	

WELL NO.	LOCATION	ELEV.	DATE TESTED	BOMB TEST DATA			SONIC INSTRUMENT TEST DATA*			PRESS. AT DATE									
				TEST DEPTH	B.N. TEMP.	OB. SERVED PRESS.	PROD. TEST (BBL./DAY)	LIQUID LEVEL	LIQUID GRAD. LIQ. PSI/FT.		WT. OF LIQ. COL. PSI	WT. OF GAS COL. PSI							
7	K 4 22 36 S e KB	3593 0	12/20/81	24	5	3725	95	155	3300										
* MIDPOINT OF CASING PERFORATIONS																			

All depths plus or minus sea level; all pressures psi; Bomb shall be calibrated frequently enough against a dead weight tester to ensure an accuracy of one per cent; gas gravity shall be determined by analysis; liquid level shall be feet above datum plane. SEE RULE 302.

* Well shall be produced at least 24 hours prior to shutting in for sonic test.

I hereby certify that the above information is true and complete to the best of my knowledge and belief.

JAREL SERVICES, INC.
Jarel Plana
(Signature)

Agent

December 23, 1981
(Date)

JARREL SERVICES, INC.

POST OFFICE BOX 1654

PHONES 505 393-5396 -- 393-8274

HOBBS, NEW MEXICO 88240

OPERATOR Gulf Oil Exploration & Production Co.

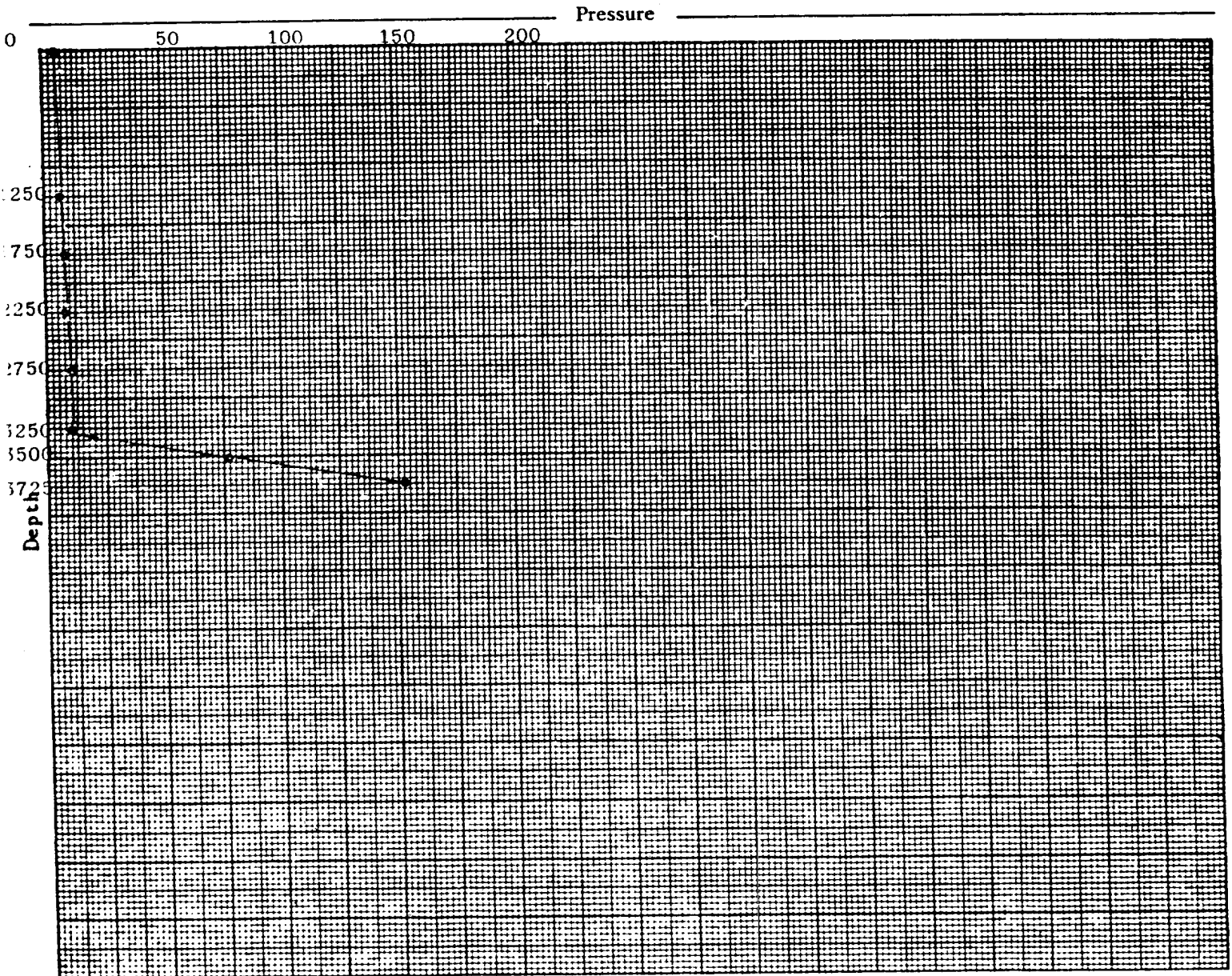
BOTTOM HOLE PRESSURE RECORD

FIELD South Eunice
 FORMATION Queen Penrose
 LEASE Janda F (NCT-F) WELL # 7
 COUNTY Lea STATE New Mexico
 DATE 12/20/81 TIME 12:30 PM
 Status Shut in
 Test Depth 3725'
 Time S. I. 24.0 hrs. Last test date -
 Tub Pres. 5 BHP last test -
 Cas. Pres. Dual BHP change -
 Elev. 3593' KB Fluid top 3300'
 Datum (-226)** Water top None
 Temp. @ 97 Run by JSI #13
 Cal. No. A4586N Chart No. 1

Depth	Pressure	Gradient
0	5	-
1250	6	.001
1750	7	.002
2250	8	.002
2750	9	.002
3250	10	.002
3500	77	.268
3725	155	.347
3819 (-226)	188 * **	(.347)

* EXTRAPOLATED PRESSURE

** MIDPOINT OF CASING PERFORATIONS



GAS-OIL RATIO TESTS

Operator		Pool		County											
Gulf Oil Corporation		Jalmat Gas		Lea											
Address		TYPE OF TEST - (X)		Completion											
Box 670, Hobbs, NM 88240		Scheduled <input type="checkbox"/>		Spectri: <input checked="" type="checkbox"/>											
LEASE NAME	WELL NO.	LOCATION			DATE OF TEST	CHOKE SIZE	TBG. PRESS.	DAILY ALLOW-ABLE	LENGTH OF TEST HOURS	PROD. DURING TEST			GAS - OIL RATIO CU.FT./EBL		
		U	S	T						R	WATER BBLs.	GRAV. OIL		OIL BBLs.	GAS M.C.F.
J. F. Janda (NCT-F)	7	K	4	22	36	1-16-82	F 2" W0	70	0	24	0	-	0	157.0	-
						Prior to CDH									

I hereby certify that the above information is true and complete to the best of my knowledge and belief.

No well will be assigned an allowable greater than the amount of oil produced on the official test.
 During gas-out ratio test, each well shall be produced at a rate not exceeding the top unit allowable for the pool in which well is located by more than 25 percent. Operator is encouraged to take advantage of this 25 percent tolerance in order that well can be assigned increased allowables when authorized by the Division.
 Gas volumes must be reported in MCF measured at a pressure base of 15.025 psia and a temperature of 60° F. Specific gravity base will be 0.60.
 Report casing pressure in lieu of tubing pressure for any well producing through casing.
 Mail original and one copy of this report to the district office of the New Mexico Oil Conservation Division in accordance with Rule 301 and appropriate pool rules.

A. L. G. Graham
(Signature)

Well Tester (Title)
January 19, 1982

NEW MEXICO OIL CONSERVATION COMMISSION
RESERVOIR PRESSURE REPORT

TYPE OF REPORT - (X)
Initial Completion
Special
General Survey

Well No. 88240
Lease: Gulf Oil Exploration & Production Co.
Producting Formation: Yates-Seven Rivers
Oil Gradient: 0.14
Gravity: 12/23/81
Well Name: Jalmat Gas

WELL NO.	LEASE	LOCATION			ELEV.	OIL OR GAS (G)	DATE TESTED	BOMB TEST DATA			SONIC INSTRUMENT TEST DATA*			PRESS. AT DATUM
		U	S	T				SHUT-IN TBG. PRESS.	TEST DEPTH	B.M. TEMP. °F	PROD. TEST (BBL./DAY)	LIQUID LEVEL	LIQUID GRAD. (FT. PSI.)	
7	J.F. Janda (NCT-F)	K	4	22	36	3593 G	12/22/81	24	73	3253	90	117	None	117

All depths plus or minus sea level; all pressures psi; Bomb shall be calibrated frequently against a dead weight tester to ensure an accuracy of one per cent; gas gravity shall be determined by analysis; liquid level shall be feet above datum plane. SEC RULE 302.
Well shall be produced at least 24 hours prior to shutting in for sonic test.

I hereby certify that the above information is true and complete to the best of my knowledge and belief.

JARREL SERVICES, INC.
J. Jarrel
(Signature)

Agent
December 23, 1981
(Date)

JARREL SERVICES, INC.

POST OFFICE BOX 1654

PHONES 505 393-5396 — 393-8274

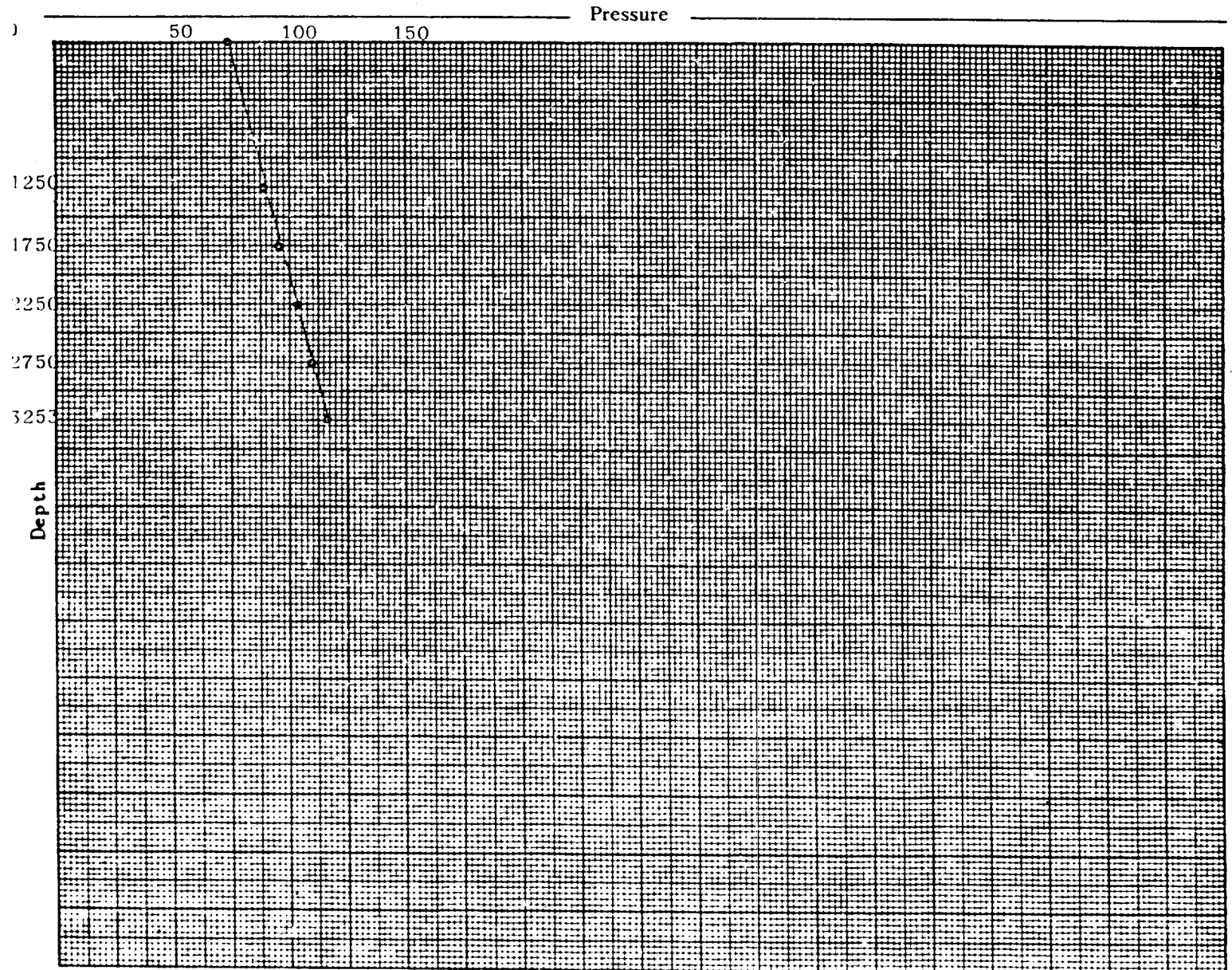
HOBBS, NEW MEXICO 88240

OPERATOR Gulf Oil Exploration & Production Co.
 FIELD Jalmat Gas
 FORMATION Y-SA
 LEASE Janda F (NCT-F) WELL # 7
 COUNTY Lea STATE New Mexico
 DATE 12/22/81 TIME 11:00 AM
 Status Shut in
 Test Depth 3253'
 Time S. I. 24.0 hrs Last test date -
 Tub Pres. 73 BHP last test -
 Cas. Pres. Dual BHP change -
 Elev. 3593' KB Fluid top None
 Datum (+340)** Water top None
 Temp. @ 90 F Run by JSI #13
 Cal. No. A4586N Chart No. 1

BOTTOM HOLE PRESSURE RECORD

Depth	Pressure	Gradient
0	73	-
1250	89	.013
1750	96	.014
2250	103	.014
2750	110	.014
3253 (+340)	117 **	.014

** MIDPOINT OF CASING PERFORATIONS



WELL DATA SHEET

LEASE J F Janda (N-1-F) Well No. 7 C Pool Summit no. 1

Location: 1970 FE #12 County LEA State NM
Sec 4 - T22S - R30E

GLE:

KDB:

H =

Initial Comp. Date: 11/8/56

Producing Formation: _____

Zone	Comp. Date	Date Abnd.

Treatment History: (Current Zone)

8 3/4 "OD 24 # Grade J55
Set @ 299 ' w/ 225 sx
Top of Cmt @ Surface by:
circ.

2 3/8 " 4.7# 8Rd J55 Btm @
3863', SN @ 3743'

3185'-3210' } Jalvat Gas
3230'-3250' } perf'd w/ 4(1/2")
3268'-3320' } JHPF

Producing History:

Formation: _____

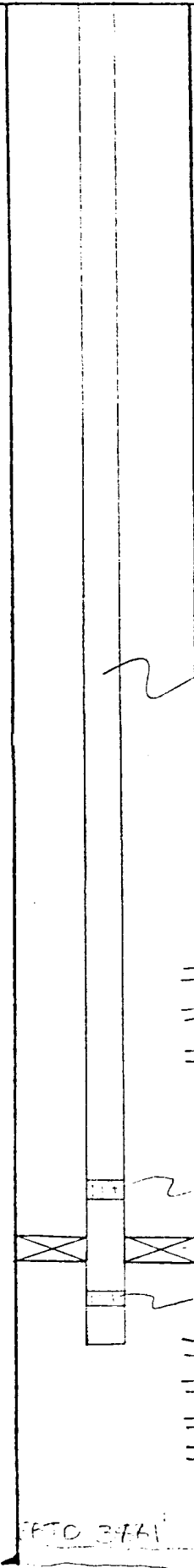
Month or Year Oil Water Gas

Eunice South
Last Test Dated: _____

_____ BOPD _____ BWPD _____ MCFGPD

FL: _____ Calc. Ppg. Eff: _____

Cu. Oil _____ Cum. Gas _____



3764'-3808' } Eunice South
3812'-3826' } perf'd w/ 4(1/2")
3831'-3837' } JHPF
3848'-3854' }

5 1/2 "OD 14 # Grade J55
Set @ 3743' w/ 1200 sx
Top of Cmt @ 640' by:
TS

Remarks:

Remove commingle downhole
install Baker Model D packer
@ 3740'

PREPARED BY: J.W. Clement 11/8/81