

District I
1625 N. French Dr., Hobbs. NM 88240

District II
PO Drawer DD, Artesia, NM 88211-0719

District III
1000 Rio Brazos Rd. Aztec, NM 87410

District IV
PO Box 2088, Santa Fe. NM 87504-2088

State of New Mexico
Energy, Minerals & Natural Resources Department

OIL CONSERVATION DIVISION
PO Box 2088
Santa Fe, NM 87504-2088

Form C-102

Revised February 21, 1994

instructions on back

Submit to Appropriate District Office

State Lease - 4 Copies

Fee Lease - 3 Copies

☐ AMENDED REPORT

WELL LOCATION AND ACREAGE DEDICATION PLAT

API Number 30-025-08791		2 Pool Code 79240	3 Pool Name Jalnat: Tan-Yates-7 rvrs (Pro Gas)	
4 Property Code 24671	5 Property Name State "A" A/C 2			6 Well Number 2
7 OGRID No. 162791	8 Operator Name Raptor Resources			9 Elevation

10 Surface Location

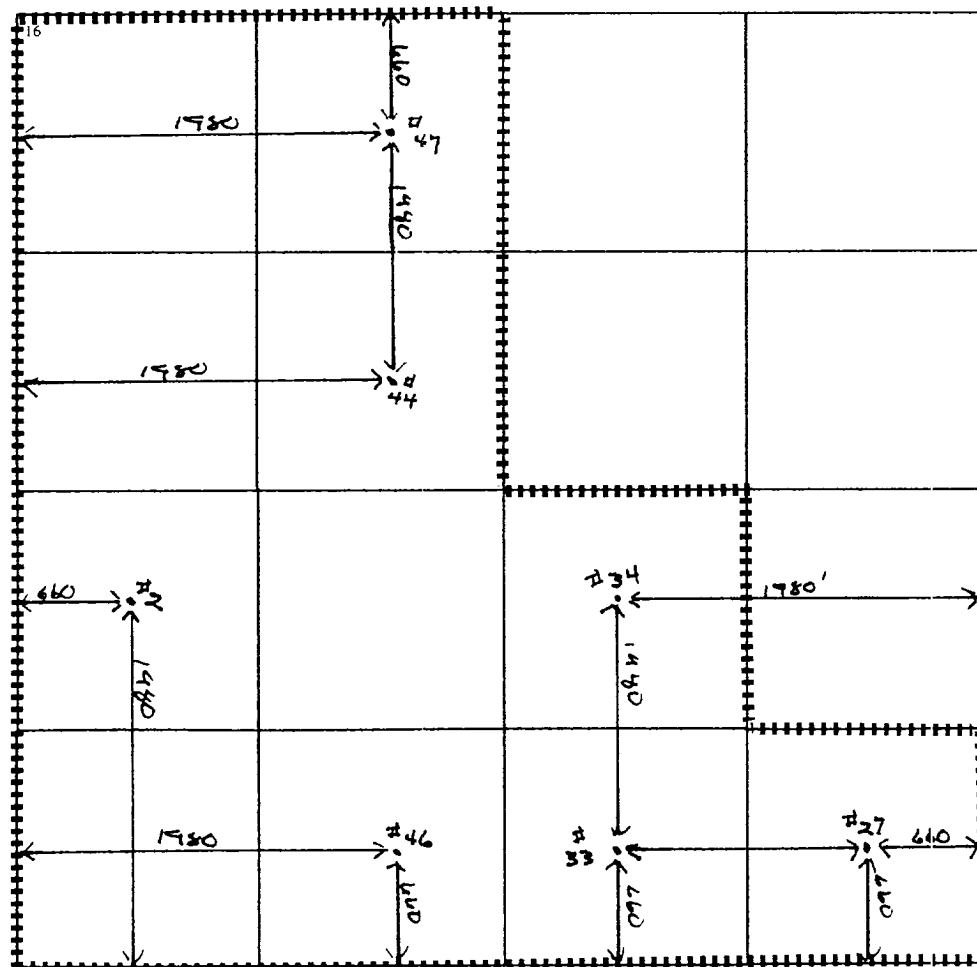
UL or lot no. L	Section 5	Township 22S	Range 36E	Lot Idn	Feet from the 1980	North/South line South	Feet from the 660	East/West line West	County Lea
--------------------	--------------	-----------------	--------------	---------	-----------------------	---------------------------	----------------------	------------------------	---------------

11 Bottom Hole Location If Different From Surface

UL or lot no.	Section	Township	Range	Lot Idn	Feet from the	North/South line	Feet from the	East/West line	County
---------------	---------	----------	-------	---------	---------------	------------------	---------------	----------------	--------

12 Dedicated Acres 440.50	13 Joint or Infill	14 Consolidation Code	15 Order No.
------------------------------	--------------------	-----------------------	--------------

NO ALLOWABLE WILL BE ASSIGNED TO THIS COMPLETION UNTIL ALL INTERESTS HAVE BEEN CONSOLIDATED
OR A NON-STANDARD UNIT HAS BEEN APPROVED BY THE DIVISION



17 OPERATOR CERTIFICATION

I hereby certify that the information contained herein is true and complete to the best of my knowledge and belief

Bill R. Keathly
Signature

Printed Name Bill R. Keathly

Title Regulatory Agent

Date 3-16-00

Date

18 SURVEYOR CERTIFICATION

I hereby certify that the well location shown on this plat was plotted from field notes of actual surveys made by me or under my supervision, and that the same is true and correct to the best of my belief.

Date of Survey

Signature and Seal of Professional Surveyor:

Certificate Number