

District I
1625 N. French Dr., Hobbs, NM 88240

State of New Mexico
Energy, Minerals & Natural Resources Department

Revised February 21, 1994
instructions on back

District II
PO Drawer DD, Artesia, NM 88211-0719

OIL CONSERVATION DIVISION
PO Box 2088
Santa Fe, NM 87504-2088

Submit to Appropriate District Office
State Lease - 4 Copies
Fee Lease - 3 Copies

District III
1000 Rio Brazos Rd. Aztec, NM 87410

District IV
PO Box 2088, Santa Fe, NM 87504-2088

☐ AMENDED REPORT

WELL LOCATION AND ACREAGE DEDICATION PLAT

API Number 30-025- 08793		2 Pool Code 79240		3 Pool Name Jalmat Tansill Yates 7 Rvrs (Pro Gas)	
4 Property Code 24671		5 Property Name State A A/C 2			
7 OGRID No. 162791		8 Operator Name Raptor Resources			6 Well Number 33 9 Elevation

10 Surface Location

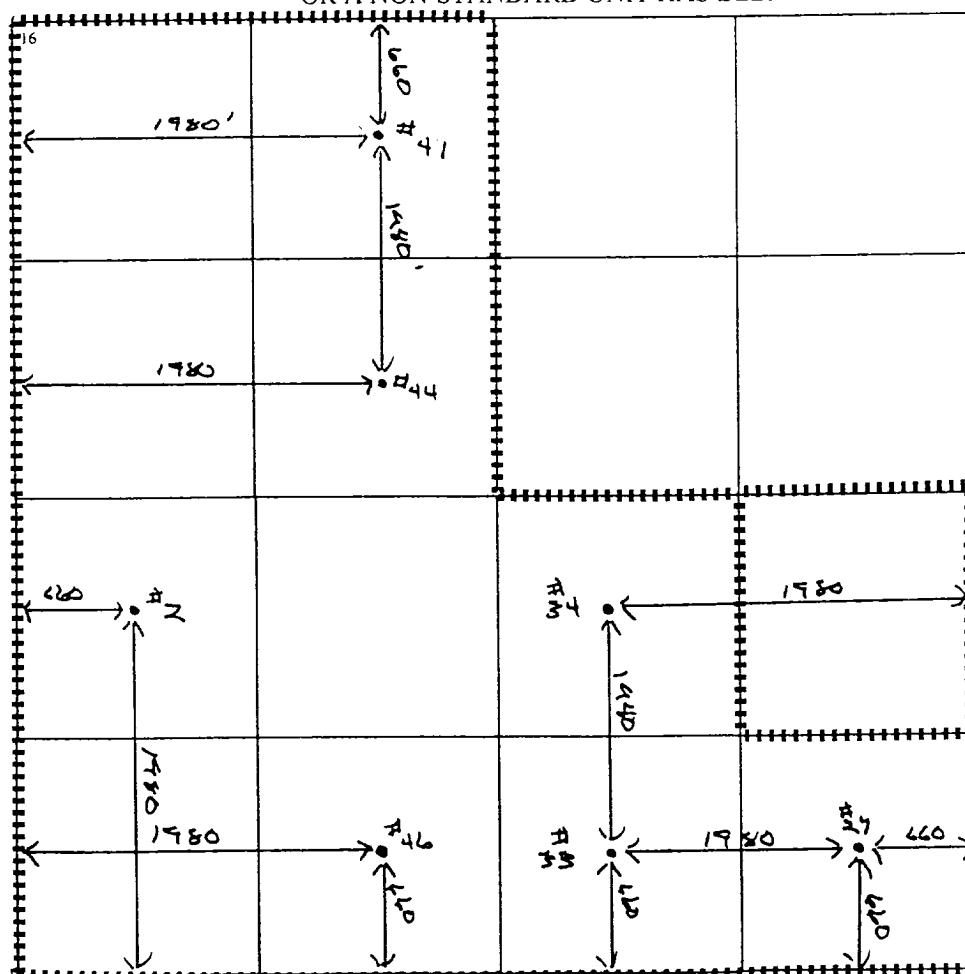
UL or lot no	Section	Township	Range	Lot Idn	Feet from the	North/South line	Feet from the	East/West line	County
0	5	22S	36E		660	South	1980	East	Lea

11 Bottom Hole Location If Different From Surface

UL or lot no	Section	Township	Range	Lot Idn	Feet from the	North/South line	Feet from the	East/West line	County

12 Dedicated Acres 440.50	13 Joint or Infill	14 Consolidation Code	15 Order No. NSP-1636-A (L) (SD)
------------------------------	--------------------	-----------------------	-------------------------------------

NO ALLOWABLE WILL BE ASSIGNED TO THIS COMPLETION UNTIL ALL INTERESTS HAVE BEEN CONSOLIDATED
OR A NON-STANDARD UNIT HAS BEEN APPROVED BY THE DIVISION



17 OPERATOR CERTIFICATION

I hereby certify that the information contained herein is true and complete to the best of my knowledge and belief

Bill R. Keathly
Signature

Bill R. Keathly

Printed Name

Regulatory Agent

Title

6-25-01

Date

18 SURVEYOR CERTIFICATION

I hereby certify that the well location shown on this plat was plotted from field notes of actual surveys made by me or under my supervision, and that the same is true and correct to the best of my belief.

Date of Survey

Signature and Seal of Professional Surveyor:

Certificate Number