

District I
PO Box 1980, Hobbs, NM 88241-1980
District II
PO Drawer DD, Artesia, NM 88211-0719
District III
1000 Rio Brazos Rd. Aztec, NM 87410
District IV
PO Box 2088, Santa Fe. NM 87504-2088

State of New Mexico
Energy, Minerals & Natural Resources Department

OIL CONSERVATION DIVISION
PO Box 2088
Santa Fe, NM 87504-2088

Form C-102

Revised February 21, 1994
instructions on back

Submit to Appropriate District Office
State Lease - 4 Copies
Fee Lease - 3 Copies

☐ AMENDED REPORT

WELL LOCATION AND ACREAGE DEDICATION PLAT

API Number 30-025- <u>8825</u>		2 Pool Code 79240	3 Pool Name Jalmat, Tnsi, Yts, 7-Rivers (Pro Gas)
4 Property Code 24671	5 Property Name State 'A' A/C 2		6 Well Number <u>19</u>
7 OGRID No. 162791	8 Operator Name Raptor Resources, Inc,		9 Elevation

10 Surface Location

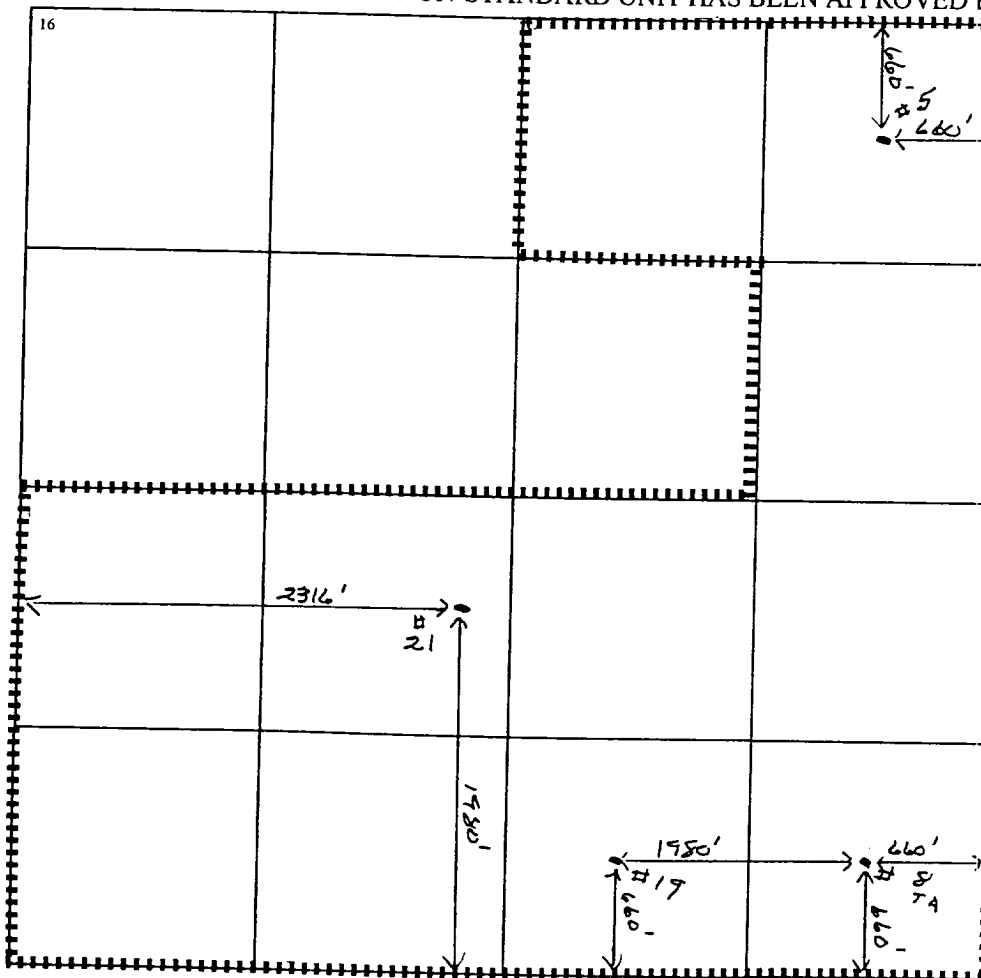
UL or lot no. <u>0</u>	Section <u>7</u>	Township <u>22S</u>	Range <u>36E</u>	Lot Idn	Feet from the <u>660</u>	North/South line <u>South</u>	Feet from the <u>1980</u>	East/West line <u>East</u>	County <u>Lea</u>
---------------------------	---------------------	------------------------	---------------------	---------	-----------------------------	----------------------------------	------------------------------	-------------------------------	----------------------

11 Bottom Hole Location If Different From Surface

UL or lot no.	Section	Township	Range	Lot Idn	Feet from the	North/South line	Feet from the	East/West line	County
12 Dedicated Acres 433.06	13 Joint or Infill	14 Consolidation Code	15 Order No. <u>NSP-1808 (L) (SD)</u>						

Applied For

NO ALLOWABLE WILL BE ASSIGNED TO THIS COMPLETION UNTIL ALL INTERESTS HAVE BEEN CONSOLIDATED
OR A NON-STANDARD UNIT HAS BEEN APPROVED BY THE DIVISION



17 OPERATOR CERTIFICATION

I hereby certify that the information contained herein is true and complete to the best of my knowledge and belief

Bill R. Keathly
Signature

Bill R. Keathly
Printed Name

Regulatory Agent - Raptor
Title

9-22-99
Date

Date

18 SURVEYOR CERTIFICATION

I hereby certify that the well location shown on this plat was plotted from field notes of actual surveys made by me or under my supervision, and that the same is true and correct to the best of my belief.

Date of Survey

Signature and Seal of Professional Surveyor:

Certificate Number