

District I  
1625 N. French Dr., Hobbs. NM 88240

District II  
PO Drawer DD, Artesia, NM 88211-0719

District III  
1000 Rio Brazos Rd. Aztec, NM 87410

**District IV**  
PO Box 2088, Santa Fe. NM 87504-2088

State of New Mexico  
Energy, Minerals & Natural Resources Department

## OIL CONSERVATION DIVISION

PO Box 2088  
Santa Fe, NM 87504-2088

Revised February 21, 1999

instructions on bac

Submit to Appropriate District Office

State Lease - 4 Copies

Free Lease - 3 Copies

☐ AMENDED REPORT

## WELL LOCATION AND ACREAGE DEDICATION PLAT

API Number 30-025-08873		2 Pool Code 79240	3 Pool Name Jalmat Tansill Yates 7 Rvrs (Pro Gas)
4 Property Code 24671	5 Property Name State A A/C 2		6 Well Number 14
7 OGRID No. 162791	8 Operator Name Raptor Resources		9 Elevation

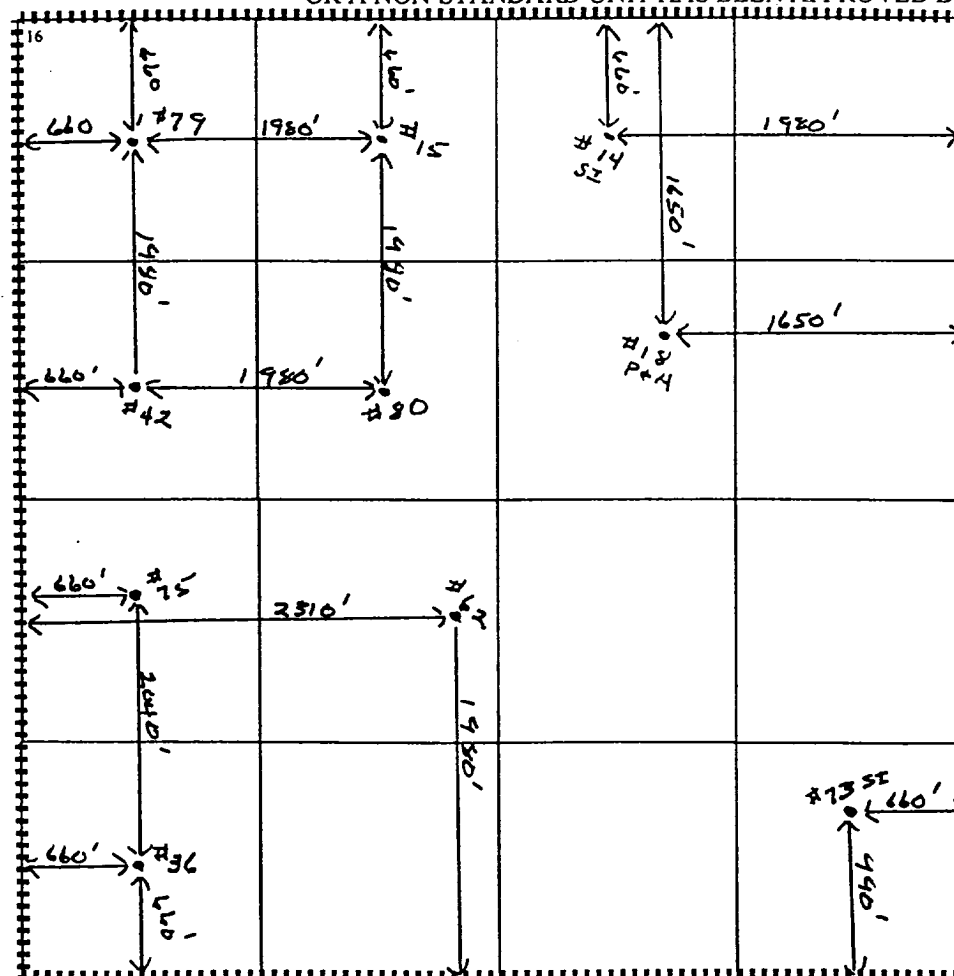
## 10 Surface Location

UL or lot no.	Section	Township	Range	Lot Idn	Feet from the	North/South line	Feet from the	East/West line	County
B	11	23S	36E		660	North	1980	East	Lea

## 11 Bottom Hole Location If Different From Surface

UL or lot no.	Section	Township	Range	Lot Idn	Feet from the	North/South line	Feet from the	East/West line	County
12 Dedicated Acres	13 Joint or Infill	14 Consolidation Code	15 Order No.						
640			<i>applied</i> R 6483B/R 0575 Applied For 7-24-01						

NO ALLOWABLE WILL BE ASSIGNED TO THIS COMPLETION UNTIL ALL INTERESTS HAVE BEEN CONSOLIDATED  
OR A NON-STANDARD UNIT HAS BEEN APPROVED BY THE DIVISION



## 17 OPERATOR CERTIFICATION

I hereby certify that the information contained herein is true and complete to the best of my knowledge and belief.

Signature \_\_\_\_\_

**Bill R. Keathly**

Printed Name \_\_\_\_\_

Regulatory Agent

Til-

Date \_\_\_\_\_

## 18 SURVEYOR CERTIFICATION

I hereby certify that the well location shown on this plat was plotted from field notes of actual surveys made by me or under my supervision, and that the same is true and correct to the best of my belief.

Date of Survey 9/1/01

Signature and Seal of Professional Surveyor:

**Certificate Number**

[illegible]

MEXICO OIL CONSERVATION COMMISSION  
WELL LOCATION AND ACREAGE DEDICATION PLAT

Form C-122  
Supersedes C-128  
Effective 1-1-65

All distances must be from the outer boundaries of the Section

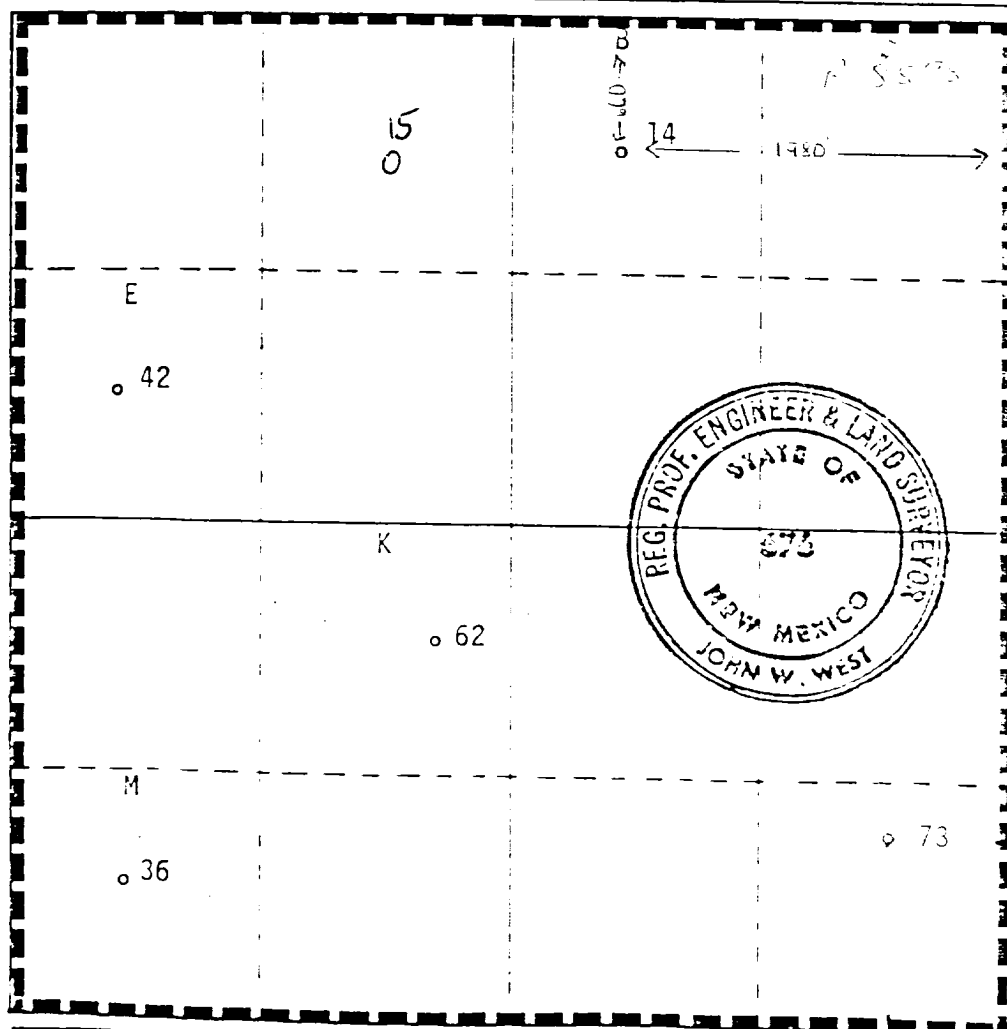
Operator Sun Exploration & Production Co.		Lease State "A" A/C-2		Well No. 14
Unit Letter B	Section 11	Township 22-S	Range 36-E	County Lea
Actual Enclosed Location of Well: 660 feet from the North line and 1980 feet from the East line				
Ground Level Elev. 3519.0	Producing Formation Yates-Seven Rivers	Pool Jalpat Gas	Dedicated Acreage: 640 Acres	

1. Outline the acreage dedicated to the subject well by colored pencil or hachure marks on the plat below.
2. If more than one lease is dedicated to the well, outline each and identify the ownership thereof (both as to working interest and royalty).
3. If more than one lease of different ownership is dedicated to the well, have the interests of all owners been consolidated by communitization, unitization, force-pooling, etc?

☐ Yes ☐ No If answer is "yes," type of consolidation \_\_\_\_\_

If answer is "no," list the owners and tract descriptions which have actually been consolidated. (Use reverse side of this form if necessary.) \_\_\_\_\_

No allowable will be assigned to the well until all interests have been consolidated (by communitization, unitization, forced-pooling, or otherwise) or until a non-standard unit, eliminating such interests, has been approved by the Commission.



CERTIFICATION

I hereby certify that the information contained herein is true and complete to the best of my knowledge and belief.

Name  
Maria L. Perez

Position  
Accounting Associate

Company  
Sun Exploration & Production Co

Date  
5-23-88

I hereby certify that the well location shown on this plat was plotted from field notes of actual surveys made by me or under my supervision, and that the same is true and correct to the best of my knowledge and belief.

Date Surveys  
August 11, 1987

Registered Professional Engineer and/or Land Surveyor

Certificate No. JOHN W. WEST, 676

D. J. EIDSON, 5239

RECEIVED

MAY 24 1988

OCD  
HOBBS OFFICE

Submit to Appropriate  
District Office  
State Lease - 4 copies  
Fee Lease - 3 copies

State of New Mexico  
Energy, Minerals and Natural Resources Department

Form C-102  
Revised 1-1-89

OIL CONSERVATION DIVISION

P.O. Box 2088  
Santa Fe, New Mexico 87504-2088

DISTRICT I  
P.O. Box 1980, Hobbs, NM 88240

DISTRICT II  
P.O. Drawer DD, Artesia, NM 88210

DISTRICT III  
1000 Rio Brazos Rd., Aztec, NM 87410

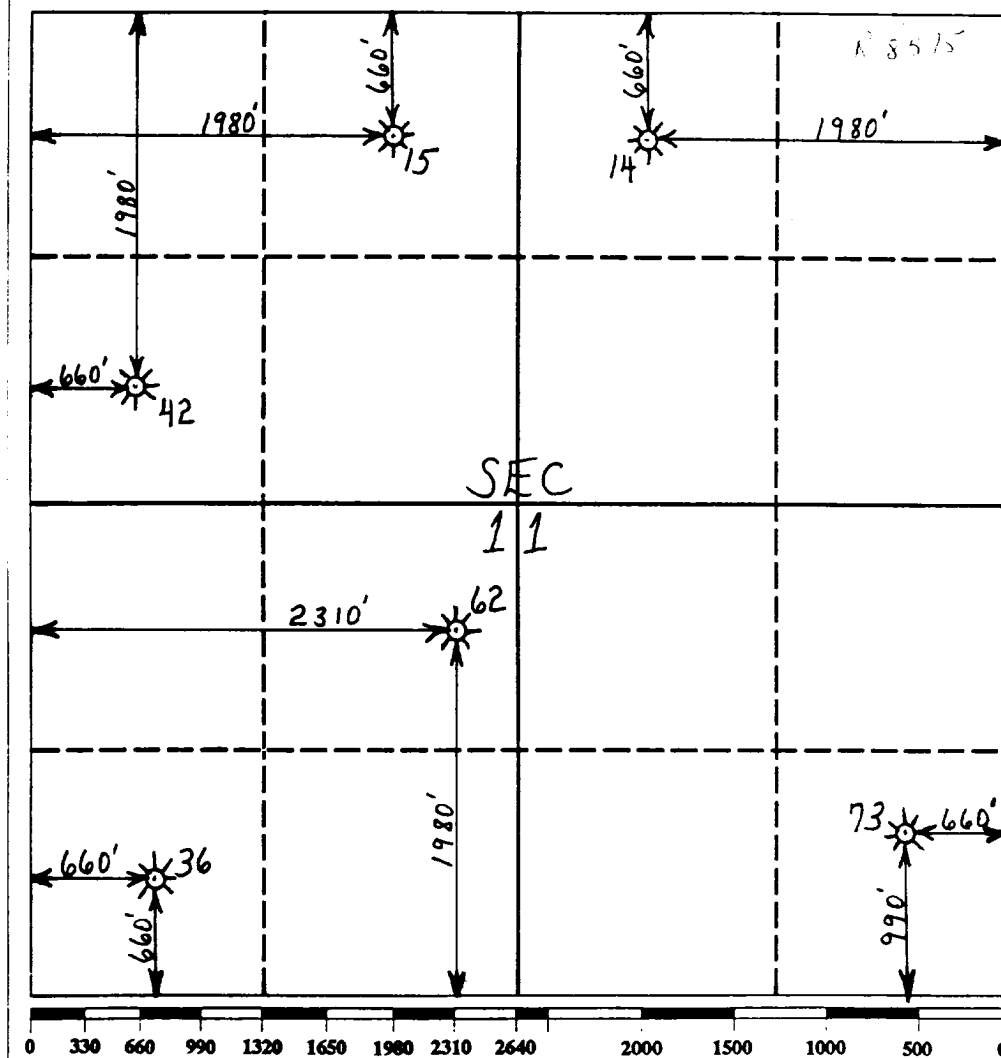
WELL LOCATION AND ACREAGE DEDICATION PLAT

All Distances must be from the outer boundaries of the section

\* NSL R-5493

Operator Clayton W. Williams, Jr., Inc.		Lease State A AC 2		Well No. 14	
Unit Letter B	Section 11	Township 22S	Range 36E	County NMPM Lea	
Actual Footage Location of Well: 660 feet from the North line and 1980 feet from the East line					
Ground level Elev. 3540	Producing Formation Yates		Pool Jalmat Tansil Yates 7 Rivers	Dedicated Acreage: 640 Acres	

- Outline the acreage dedicated to the subject well by colored pencil or hatchure marks on the plat below.
- If more than one lease is dedicated to the well, outline each and identify the ownership thereof (both as to working interest and royalty).
- If more than one lease of different ownership is dedicated to the well, have the interest of all owners been consolidated by communitization, unitization, force-pooling, etc.?  
☐ Yes ☐ No If answer is "yes" type of consolidation \_\_\_\_\_  
If answer is "no" list the owners and tract descriptions which have actually been consolidated. (Use reverse side of this form if necessary). \_\_\_\_\_  
No allowable will be assigned to the well until all interests have been consolidated (by communitization, unitization, forced-pooling, or otherwise) or until a non-standard unit, eliminating such interest, has been approved by the Division.



OPERATOR CERTIFICATION

I hereby certify that the information contained herein is true and complete to the best of my knowledge and belief.

Signature

David G. Grafe

Printed Name

Petroleum Engineer

Position

Clayton W. Williams, Jr., Inc.

Company

02/17/93

Date

SURVEYOR CERTIFICATION

I hereby certify that the well location shown on this plat was plotted from field notes of actual surveys made by me or under my supervision, and that the same is true and correct to the best of my knowledge and belief.

Date Surveyed

Signature & Seal of  
Professional Surveyor

Certificate No.

RECEIVED  
FEB 1 6 1993  
OCD HOUSING OFFICE

NE MEXICO OIL CONSERVATION COMMISSION  
WELL LOCATION AND ACREAGE DEDICATION PLAT

Form C-102  
Supersedes C-101  
Effective 1-1-

All distances must be from the outer boundaries of the Section.

Operator <b>Sun Texas Company</b>			Lease <b>State "A" A/c-2</b>		Well No. <b>14</b>
Unit Letter <b>B</b>	Section <b>11</b>	Township <b>22-S</b>	Range <b>36-E</b>	County <b>Lea</b>	
Actual Plotage Location of Well:					
<b>660</b>	feet from the	<b>north</b>	line and	<b>1980</b>	feet from the
				<b>east</b>	line
Ground Level Elev. <b>3541'</b>	Producing Formation <b>Yates</b>		Pool <b>Jalmat</b>		Dedicated Acreage: <b>640</b> Acre.

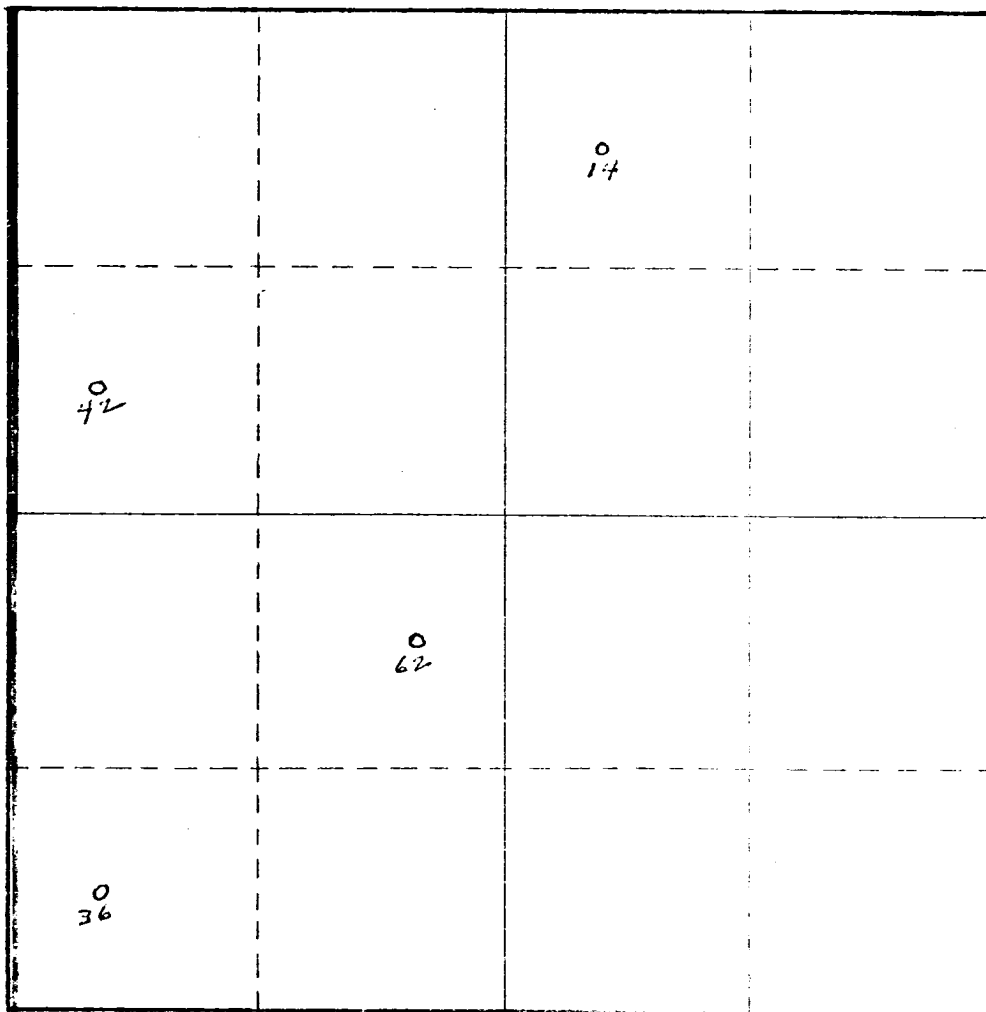
1. Outline the acreage dedicated to the subject well by colored pencil or hachure marks on the plat below.
2. If more than one lease is dedicated to the well, outline each and identify the ownership thereof (both as to working interest and royalty).
3. If more than one lease of different ownership is dedicated to the well, have the interests of all owners been consolidated by communitization, unitization, force-pooling, etc?

☐ Yes ☐ No If answer is "yes," type of consolidation \_\_\_\_\_

If answer is "no," list the owners and tract descriptions which have actually been consolidated. (Use reverse side of this form if necessary.) \_\_\_\_\_

No allowable will be assigned to the well until all interests have been consolidated (by communitization, unitization, forced-pooling, or otherwise) or until a non-standard unit, eliminating such interests, has been approved by the Commission.

R-6483



CERTIFICATION

I hereby certify that the information contained herein is true and complete to the best of my knowledge and belief.

Name *J. F. Fisher*

Position Senior Clerk

Company Sun Texas Company

Date November 6, 1980

I hereby certify that the well location shown on this plat was plotted from field notes of actual surveys made by me or under my supervision, and that the same is true and correct to the best of my knowledge and belief.

I am Surveyed

Registered Professional Engineer and/or Land Surveyor

Certificate No.

0 330 660 990 1320 1650 1980 2310 2640 2970 3300 3630 3960 4290 4620 4950 5280 5610 5940 6270 6600

COUNTY	LEA	FIELD	Eumont Gas	STATE	N.M.	OWWO
OPR	TEX. & PACIFIC OIL COMPANY			MA.		
14 State "A" (Acct. 2)						
Sec. 11, T-22-S, R-36-E						
CO-ORD						
660' fr N Line & 1980' fr E Line of Sec.						
Re-Spud 3-28-64						
Re-Comp 4-15-64						
		CLASS		out of 3540'		
		FORMATION	DATUM	FORMATION	DATUM	
CSG & SX - TUBING						
12½" 346' 200						
7" 3680' 300						
LOGS EL GR RA IND HC A						
		TD 3790', PPL 3660'				

IP Yates-Seven Rivers-Queen Perfs 2839-3601' CAOF 3000 MCFGPD.  
TP 860#.

Distribution limited and publication prohibited by subscribers' agreement.  
Reproduction rights reserved by Williams & Lee Scouting Service, Inc.

CONT.	PROP	DEPTH	TYPE
DATE			

8-2-64 F.R.C. 8-6-64; OWWO, OIE 3790'.  
Orig. Complete OH 3680-3790' in Arrowhead field;  
Temporarily Abandoned July, 1963.  
TD 3790', PPL 3660', COMPLETED.  
Set RF @ 3660'.  
Perf @ 2839', 2868', 2931', 2978', 3023', 3094',  
3135', 3200', 3250', 3296', 3325', 3360', 3420',  
3468', 3478', 3509', 3545', 3562' & 3601' W/I SPI  
Frac 20,000 gals oil + 40,000# sd.



**NEW MEXICO OIL CONSERVATION COMMISSION  
WELL LOCATION AND ACREAGE DEDICATION PLAT**

Form C-102  
Supersedes ( )  
Effective 1-1

All distances must be from the outer boundaries of the Section.

Operator <b>TEXAS PACIFIC OIL CO., INC.</b>			Lease State "A" A/c-2		Well No. 14
Unit Letter <b>B</b>	Section <b>11</b>	Township <b>22-S</b>	Range <b>36-E</b>	County <b>Lea</b>	
Actual Footage Location of Well:					
660 feet from the <b>North</b> line and		1980 feet from the <b>East</b> line			
Ground Level Elev. <b>3540</b>	Producing Formation <b>Yates</b>		Pool <b>Jalmat</b>		Dedicated Acreage: <b>640</b> Acr

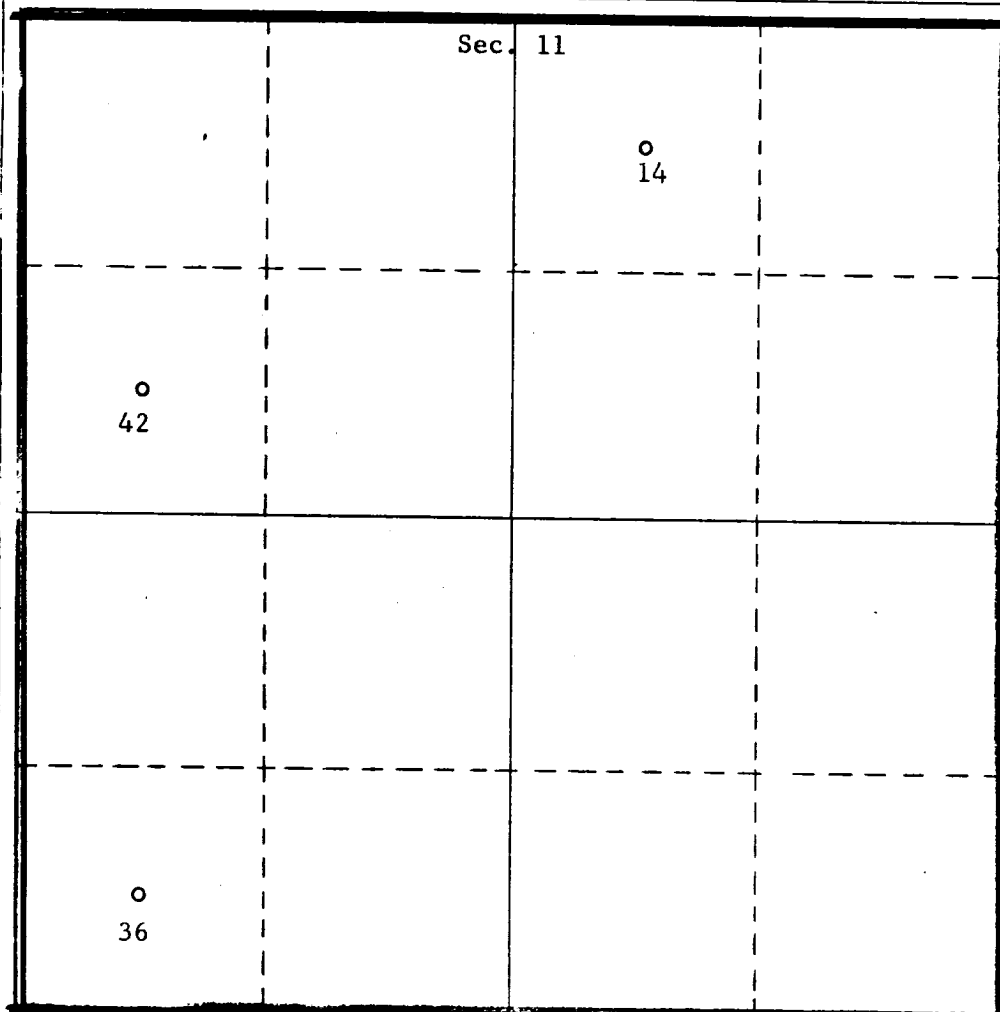
1. Outline the acreage dedicated to the subject well by colored pencil or hatchure marks on the plat below.
2. If more than one lease is dedicated to the well, outline each and identify the ownership thereof (both as to working interest and royalty).
3. If more than one lease of different ownership is dedicated to the well, have the interests of all owners been consolidated by communitization, unitization, force-pooling, etc?

☐ Yes    ☐ No    If answer is "yes," type of consolidation \_\_\_\_\_

If answer is "no," list the owners and tract descriptions which have actually been consolidated. (Use reverse side of this form if necessary.) \_\_\_\_\_

No allowable will be assigned to the well until all interests have been consolidated (by communitization, unitization, forced-pooling, or otherwise) or until a non-standard unit, eliminating such interests, has been approved by the Commission.

R-4116



**CERTIFICATION**

I hereby certify that the information contained herein is true and complete to the best of my knowledge and belief.

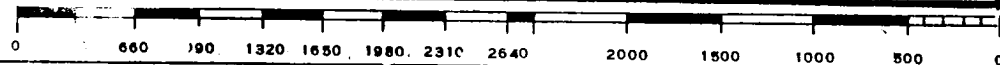
*Sheldon Ward*

Name  
**Sheldon Ward**  
Position  
**Area Superintendent**  
Company  
**TEXAS PACIFIC OIL CO., INC.**  
Date  
**4-6-71**

I hereby certify that the well location shown on this plat was plotted from field notes of actual surveys made by me or under my supervision, and that the same is true and correct to the best of my knowledge and belief.

Date Surveyed \_\_\_\_\_  
Registered Professional Engineer and/or Land Surveyor \_\_\_\_\_

Certificate No. \_\_\_\_\_



RECEIVED

APR 13 1971

U.S. CONSERVATION COMM.  
HOBBS, N. M.

**NEW MEXICO OIL CONSERVATION COMMISSION**  
**WELL LOCATION AND ACREAGE DEDICATION PLAT**

FORM C-128  
 Revised 5/1/57

SEE INSTRUCTIONS FOR COMPLETING THIS FORM ON THE REVERSE

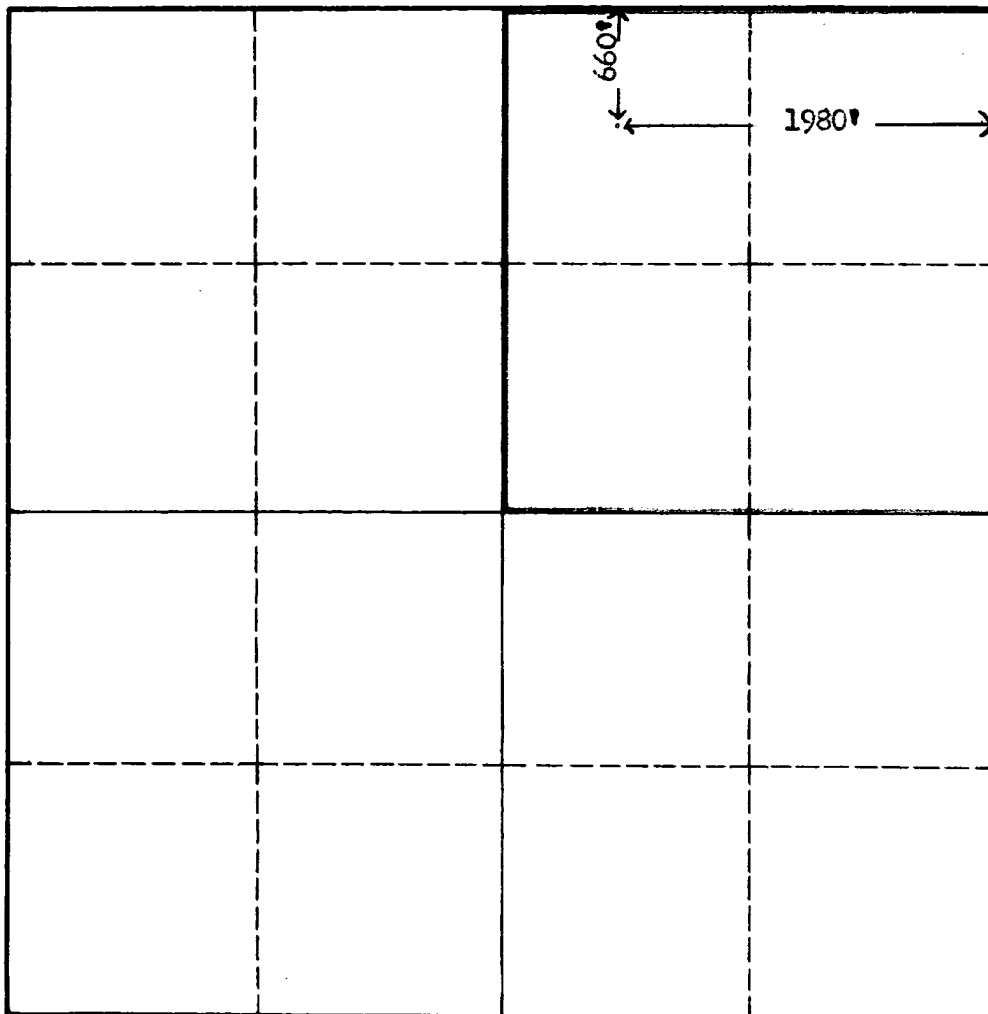
**SECTION A**

Operator <b>Texas Pacific Oil Company</b>			Lease <b>State "A" A/c-2</b>		Well No. <b>14</b>
Unit Letter <b>B</b>	Section <b>11</b>	Township <b>22-S</b>	Range <b>36-E</b>	County <b>Lea</b>	
Actual Footage Location of Well: <b>660</b> feet from the <b>North</b> line and <b>1980</b> feet from the <b>East</b> line					
Ground Level Elev. <b>3540'</b>	Producing Formation		Pool <b>Dumont Gas</b>		Dedicated Acreage: <b>160</b> Acres

1. Is the Operator the only owner in the dedicated acreage outlined on the plat below? YES ☒ NO ☐ . ("Owner" means the person who has the right to drill into and to produce from any pool and to appropriate the production either for himself or for himself and another. (65-3-29 (e) NMSA 1935 Comp.)
2. If the answer to question one is "no," have the interests of all the owners been consolidated by communitization agreement or otherwise? YES ☐ NO ☐ . If answer is "yes," Type of Consolidation \_\_\_\_\_
3. If the answer to question two is "no," list all the owners and their respective interests below:

Owner	Land Description

**SECTION B**



**CERTIFICATION**

I hereby certify that the information in SECTION A above is true and complete to the best of my knowledge and belief.

Name <i>John H. Hendrix</i>
Position <b>District Engineer</b>
Company <b>Texas Pacific Oil Company</b>
Date <b>April 15, 1964</b>

I hereby certify that the well location shown on the plat in SECTION B was plotted from field notes of actual surveys made by me or under my supervision, and that the same is true and correct to the best of my knowledge and belief.

Date Surveyed
Registered Professional Engineer and/or Land Surveyor
Certificate No.

0 330 660 990 1320 1650 1980 2310 2640 2000 1500 1000 500 0

## INSTRUCTIONS FOR COMPLETION OF FORM C-128

1. Operator shall furnish and certify to the information called for in Section A.
2. Operator shall outline the dedicated acreage for *both* oil and gas wells on the plat in Section B.
3. A registered professional engineer or land surveyor registered in the State of New Mexico or approved by the Commission shall show on the plat the location of the well and certify this information in the space provided.
4. All distances shown on the plat must be from the outer boundaries of the Section.
5. If additional space is needed for listing owners and their respective interests as required in question 3 of Section A, please use space below.