

District I  
1625 N. French Dr., Hobbs. NM 88240

District II  
PO Drawer DD, Artesia, NM 88211-0719  
District III  
1000 Rio Brazos Rd. Aztec, NM 87410  
District IV  
PO Box 2088, Santa Fe, NM 87504-2088

State of New Mexico  
Energy, Minerals & Natural Resources Department

OIL CONSERVATION DIVISION  
PO Box 2088  
Santa Fe, NM 87504-2088

Revised February 21, 1995

instructions on bac

Submit to Appropriate District Office

State Lease - 4 Copies

Free Lease - 3 Copies

☐ AMENDED REPORT

## WELL LOCATION AND ACREAGE DEDICATION PLAT

API Number 30-025-08874	2 Pool Code 79240	3 Pool Name Jalmat Tansill Yates 7 Rvrs (Pro Gas)
4 Property Code 24671	5 Property Name State A A/C 2	6 Well Number 15
7 OGRID No. 162791	8 Operator Name Raptor Resources	9 Elevation

## 10 Surface Location

UL or lot no.	Section	Township	Range	Lot Idn	Feet from the	North/South line	Feet from the	East/West line	County
C	11	22S	36E		660	North	1980	West	Lea

## 11 Bottom Hole Location If Different From Surface

UL or lot no	Section	Township	Range	Lot Idn	Feet from the	North/South line	Feet from the	East/West line	County
12 Dedicated Acres	13 Joint or Infill	14 Consolidation Code		15 Order No.					
640				<i>applied</i> R 6483B/R 0575 Applied For 7-24-01					

NO ALLOWABLE WILL BE ASSIGNED TO THIS COMPLETION UNTIL ALL INTERESTS HAVE BEEN CONSOLIDATED  
OR A NON-STANDARD UNIT HAS BEEN APPROVED BY THE DIVISION

<b>17 OPERATOR CERTIFICATION</b>	
I hereby certify that the information contained herein is true and complete to the best of my knowledge and belief.	
<u>Bill R. Keathly</u>	
Signature	Bill R. Keathly
Printed Name	
Regulatory Agent	
Title	
<u>2-20-02</u>	
Date	
<b>18 SURVEYOR CERTIFICATION</b>	
I hereby certify that the well location shown on this plat was plotted from field notes of actual surveys made by me or under my supervision, and that the same is true and correct to the best of my belief.	
Date of Survey	
Signature and Seal of Professional Surveyor:	
Certificate Number	

District I  
PO Box 1980, Hobbs, NM 88241-1980

District II  
PO Drawer DD, Artesia, NM 88211-0719

District III  
1000 Rio Brazos Rd. Aztec, NM 87410

District IV  
PO Box 2088, Santa Fe, NM 87504-2088

State of New Mexico  
Energy, Minerals & Natural Resources Department

OIL CONSERVATION DIVISION  
PO Box 2088  
Santa Fe, NM 87504-2088

Form

Revised February 21  
Instructions on

Submit to Appropriate District  
State Lease - 4 C  
Fee Lease - 3 C

☐ AMENDED REP

### WELL LOCATION AND ACREAGE DEDICATION PLAT

API Number 30-025-08874		2 Pool Code 79240		3 Pool Name Jalmat, TnsI, Yts, 7-Rivers (Pro Gas)	
4 Property Code 24671		5 Property Name State 'A' A/C 2			
7 OGRID No. 162791		8 Operator Name Raptor Resources, Inc.			6 Well Number 15
					9 Elevation

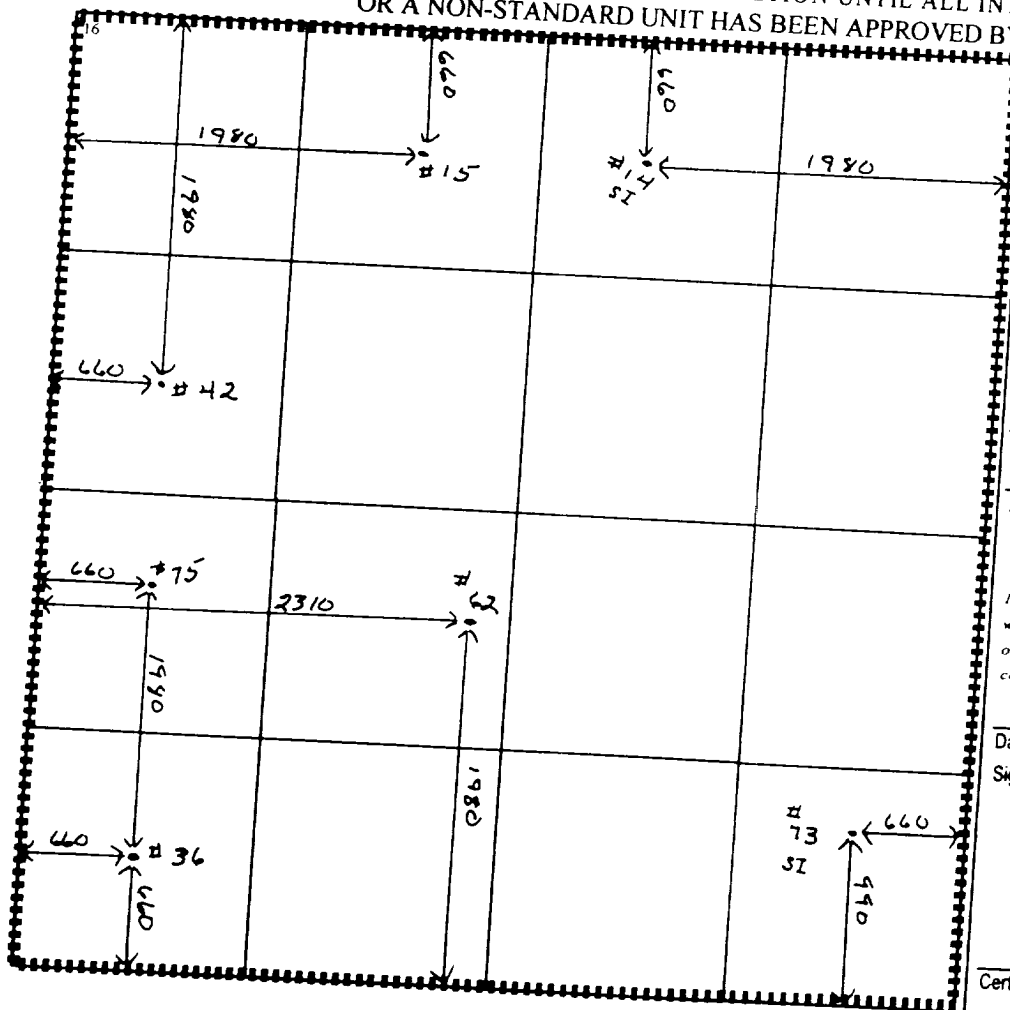
10 Surface Location									
UL or lot no.	Section	Township	Range	Lot Idn	Feet from the	North/South line	Feet from the	East/West line	County
C	11	22S	36E		660	North	1980	West	Lea

11 Bottom Hole Location If Different From Surface									
UL or lot no.	Section	Township	Range	Lot Idn	Feet from the	North/South line	Feet from the	East/West line	County

12 Dedicated Acres 640	13 Joint or Infill	14 Consolidation Code	15 Order No.
---------------------------	--------------------	-----------------------	--------------

NO ALLOWABLE WILL BE ASSIGNED TO THIS COMPLETION UNTIL ALL INTERESTS HAVE BEEN CONSOLIDATED  
OR A NON-STANDARD UNIT HAS BEEN APPROVED BY THE DIVISION

NSL-3089-A (SD)



### 17 OPERATOR CERTIFICATION

I hereby certify that the information contained herein is true and complete to the best of my knowledge and belief

*Bill R. Keathly*  
Signature

Printed Name  
Bill R. Keathly

Title  
Regulatory Agent - Raptor

Date  
12-16-99

### 18 SURVEYOR CERTIFICATION

I hereby certify that the well location shown on this plat was plotted from field notes of actual surveys made by me or under my supervision, and that the same is true and correct to the best of my belief.

Date of Survey

Signature and Seal of Professional Surveyor

Certificate Number

Submit to Appropriate  
District Office  
State Lease - 4 copies  
Fee Lease - 3 copies

State of New Mexico  
Energy, Minerals and Natural Resources Department

Form C-102  
Revised 1-1-89

OIL CONSERVATION DIVISION

DISTRICT I  
P.O. Box 1980, Hobbs, NM 88240

P.O. Box 2088  
Santa Fe, New Mexico 87504-2088

DISTRICT II  
P.O. Drawer DD, Artesia, NM 88210

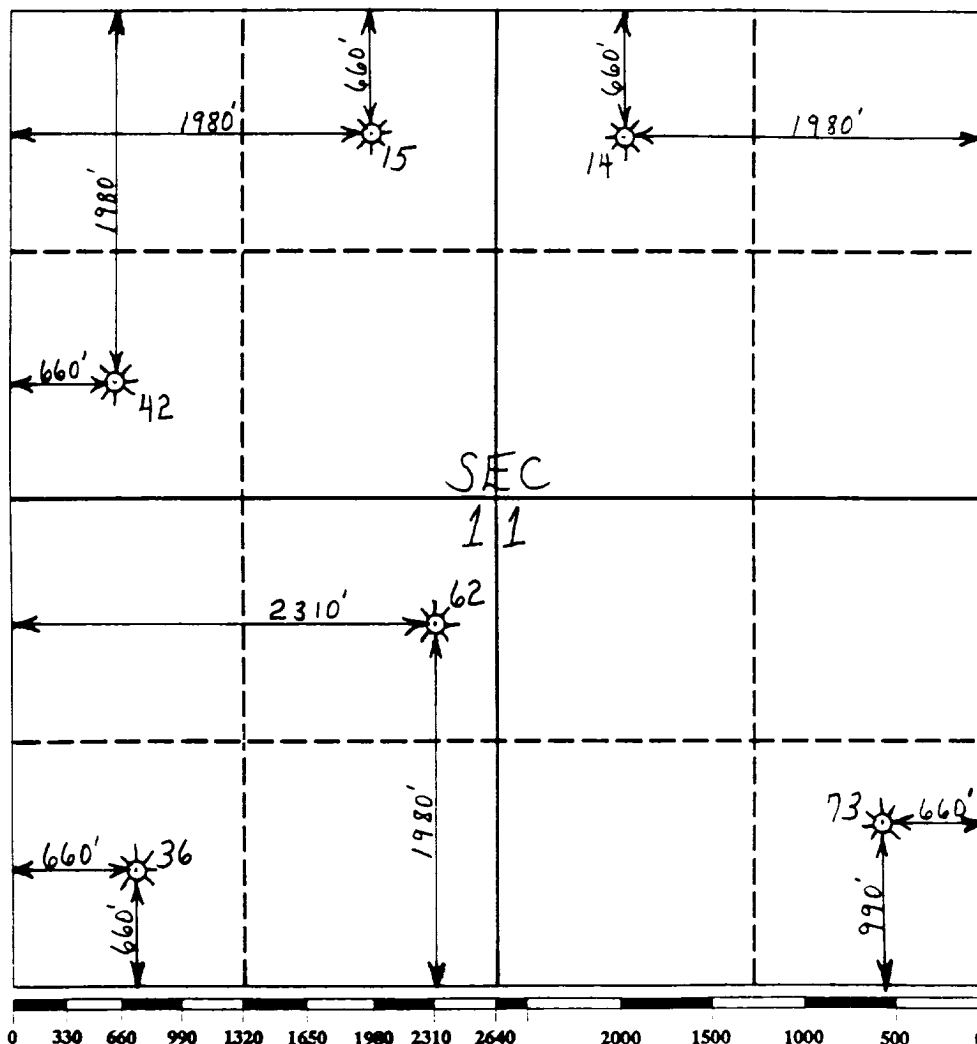
DISTRICT III  
1000 Rio Brazos Rd., Aztec, NM 87410

WELL LOCATION AND ACREAGE DEDICATION PLAT

All Distances must be from the outer boundaries of the section

Operator Clayton W. Williams, Jr., Inc.		Lease State A AC 2		Well No. 15	
Unit Letter C	Section 11	Township 22S	Range 36E	County NMPM Lea	
Actual Footage Location of Well:					
660 feet from the North line and		1980 feet from the West line			
Ground level Elev. 3561		Producing Formation Yates		Pool Jalmit Tnasil Yates 7 Rivers	
				Dedicated Acreage: 640 Acres	

1. Outline the acreage dedicated to the subject well by colored pencil or hatchure marks on the plat below.
2. If more than one lease is dedicated to the well, outline each and identify the ownership thereof (both as to working interest and royalty).
3. If more than one lease of different ownership is dedicated to the well, have the interest of all owners been consolidated by communization, unitization, force-pooling, etc.?  
☐ Yes ☐ No If answer is "yes" type of consolidation \_\_\_\_\_  
If answer is "no" list the owners and tract descriptions which have actually been consolidated. (Use reverse side of this form if necessary.) \_\_\_\_\_  
No allowable will be assigned to the well until all interests have been consolidated (by communization, unitization, forced-pooling, or otherwise) or until a non-standard unit, eliminating such interest, has been approved by the Division.



OPERATOR CERTIFICATION

I hereby certify that the information contained herein is true and complete to the best of my knowledge and belief.

Signature David G. Grafe  
Printed Name  
David G. Grafe  
Position  
Petroleum Engineer  
Company  
Clayton W. Williams, Jr., Inc.  
Date  
02/17/93

SURVEYOR CERTIFICATION

I hereby certify that the well location shown on this plat was plotted from field notes of actual surveys made by me or under my supervision, and that the same is true and correct to the best of my knowledge and belief.

Date Surveyed \_\_\_\_\_

Signature & Seal of  
Professional Surveyor \_\_\_\_\_

Certificate No. \_\_\_\_\_

## OIL CONSERVATION DIVISION

P.O. Box 2088

Santa Fe, New Mexico 87504-2088

## DISTRICT I

P.O. Box 1980, Hobbs, NM 88240

## DISTRICT II

P.O. Drawer DD, Artesia, NM 88210

## DISTRICT III

1000 Rio Brazos Rd., Aztec, NM 87410

## WELL LOCATION AND ACREAGE DEDICATION PLAT

All Distances must be from the outer boundaries of the section

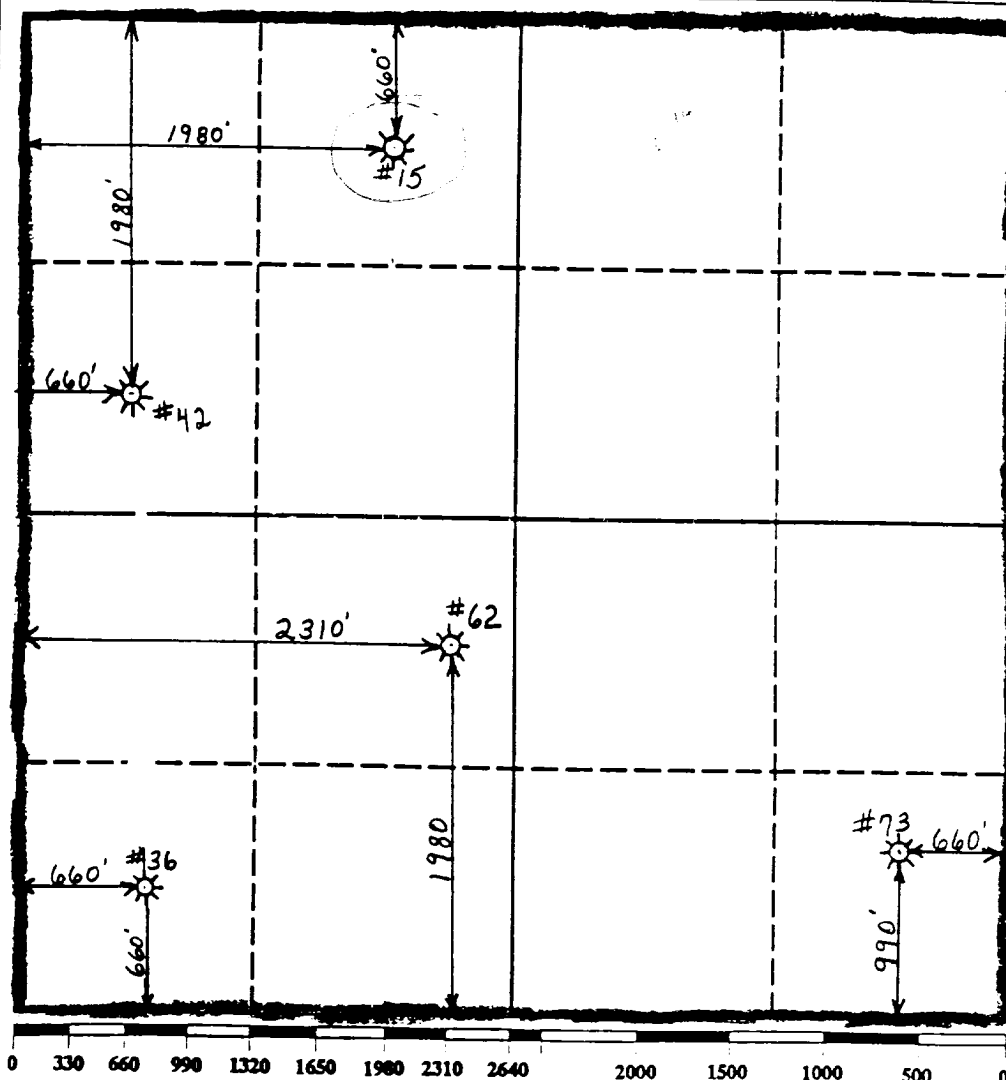
Operator <b>Clayton W. Williams, Jr., Inc.</b>			Lease <b>State "A" A/C 2</b>		Well No. <b>15</b>
Unit Letter <b>C</b>	Section <b>11</b>	Township <b>22S</b>	Range <b>36E</b>	County <b>Lea</b>	NMPM
Actual Footage Location of Well:					
<b>660</b> feet from the <b>North</b> line and <b>1980</b> feet from the <b>West</b> line					
Ground level Elev. <b>3561'</b>	Producing Formation <b>Yates</b>	Pool <b>Jalmat-TNSL-Yates-7Rvr</b>	Dedicated Acreage: <b>640</b> Acres		

1. Outline the acreage dedicated to the subject well by colored pencil or hatchure marks on the plat below.
2. If more than one lease is dedicated to the well, outline each and identify the ownership thereof (both as to working interest and royalty).
3. If more than one lease of different ownership is dedicated to the well, have the interest of all owners been consolidated by communitization, unitization, force-pooling, etc.?

☐ Yes ☐ No If answer is "yes" type of consolidation

If answer is "no" list the owners and tract descriptions which have actually been consolidated. (Use reverse side of this form if necessary).

No allowable will be assigned to the well until all interests have been consolidated (by communitization, unitization, forced-pooling, or otherwise) or until a non-standard unit, eliminating such interest, has been approved by the Division.



## OPERATOR CERTIFICATION

I hereby certify that the information contained herein is true and complete to the best of my knowledge and belief.

Signature

Printed Name

David G. Grafe

Position

Production Engineer

Company

Clayton W. Williams, Jr., Inc.

Date

11-20-91

## SURVEYOR CERTIFICATION

I hereby certify that the well location shown on this plat was plotted from field notes of actual surveys made by me or under my supervision, and that the same is true and correct to the best of my knowledge and belief.

Date Surveyed

Signature &amp; Seal of Professional Surveyor

Certificate No.

OTW

COUNTY LEA	FIELD Eunice, S.	STATE NM MV 08874
OPR TEXAS PACIFIC OIL CO., INC.	MAP	
15 State "A" A/C 2		
Sec 11, T-22-S, R-36-E		CO-ORD
660' FNL, 1980' FWL of Sec		
Re-Spd 9-23-70		CLASS
Re-Cmp 10-1-70		EL
	FORMATION	DATUM
CSG & SX - TUBING 12 1/2" at 360' w/250 sx 7" at 3710' w/400 sx		
LOGS EL GR RA IND HC A		
TD 3856'; FBD 3685'		

TP (Seven Rivers - Queen) Perfs 3355-3649' F 2 BOPL + 25 FW. For based on 24 hr test thru 32/64" chk. CP 200#; TF 150#.

Distribution limited and publication prohibited by subscribers' agreement.  
Reproduction rights reserved by Williams & Lee Scouting Service, Inc.

CONT.	PROP DEPTH 3649'	TYPE 20
DATE		

F.R.C. 11-19-70  
FD 3649' WC (Seven Rivers - Queen)  
(Orig. Texas Pacific Coal & Oil Co., comp 4-24-33  
from CH 3710-3851', OTD 3856', OFE 3851')

11-17-70 TD 3856'; FBD 3685'; COMPLETE  
BP @ 3685'  
Perf @ 3355', 3368', 3385', 3402', 3431', 3457',  
3481', 3499', 3520', 3528', 3560', 3579', 3588',  
3612', 3622', 3637', 3649' w/1 SPI  
Acid (3355-3649') 2000 gals  
Frac (3355-3649') 20,000 gals wlr + 40,000# ss

11-19-70 COMPLETION REPORTED