

NEW MEXICO OIL CONSERVATION COMMISSION  
Santa Fe, New Mexico

REQUEST FOR PERMISSION TO CONNECT WITH PIPE LINE

This request should be SUBMITTED IN TRIPLICATE. See instructions in the Rules and Regulations of the Commission.

Hobbs, New Mexico

Place

Aug 12, 1939

Date

OIL CONSERVATION COMMISSION,  
Santa Fe, New Mexico.

Gentlemen:

Permission is requested to connect Repollo Oil Company State 157 "D"  
Company or Operator Lease  
Well No. 4 in S/2 of Sec. 12, T. 22S, R. 36E, N.M.P.M.  
So. Eunice Field, Lea County, with the pipe line of the  
Texas New Mexico Pipe Line Co., Eunice, N. M.  
Pipe Line Co. Address

Status of land (State, Government or privately owned) State

Location of tank battery SE/4 Sec. 12-22S-36E

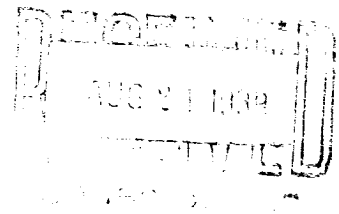
Description of tanks 600Bbl. VP Water Seal Wood

Logs of the above wells were filed with the Oil Conservation Commission 8/12/39, 19

All other requirements of the Commission have ~~been~~ not been complied with. (Cross out incorrect words.)

Additional information:

**This well will flow into central battery with well # 3**



Yours truly,

Permission is hereby granted to make pipe line connections requested above.

OIL CONSERVATION COMMISSION,

By A. C. H.

Title

Date

Repollo Oil Company

Owner or Operator

By J. J. Smith

Position

Dist. Supt.

Address

Hobbs, N.M.

1. The first step in the process of the  
analysis is the identification of the

2. The second step is the identification of the

3. The third step is the identification of the

4. The fourth step is the identification of the

5. The fifth step is the identification of the

6. The sixth step is the identification of the

7. The seventh step is the identification of the

8. The eighth step is the identification of the

9. The ninth step is the identification of the

10. The tenth step is the identification of the

11. The eleventh step is the identification of the

12. The twelfth step is the identification of the

13. The thirteenth step is the identification of the

14. The fourteenth step is the identification of the

15. The fifteenth step is the identification of the

16. The sixteenth step is the identification of the