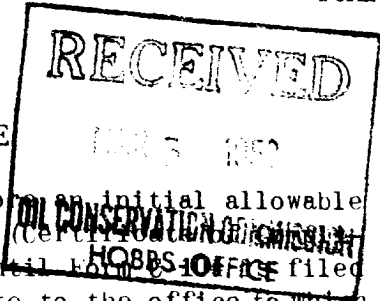


OIL CONSERVATION COMMISSION  
Santa Fe, New Mexico

REQUEST FOR (OIL)-(GAS) ALLOWABLE



It is necessary that this form be submitted by the operator before an initial allowable will be assigned to any completed oil or gas well. Form C-110 (Certificate of Completion and Authorization to Transport Oil) will not be approved until Form C-104 is filed with the Commission. Form C-104 is to be submitted in triplicate to the office to which Form C-101 was sent. Two copies will be retained there and the other submitted to the Proration Office, Hobbs, New Mexico. The allowable will be assigned effective 7:00 a.m. on date of completion, provided completion report is filed during month of completion. The completion date shall be that date in the case of an oil well when oil is delivered into the stock tanks. Gas must be reported on 15.025 P.B. at 60° Fahrenheit.

Hobbs, New Mexico  
Place

February 29, 1952  
Date

WE ARE HEREBY REQUESTING AN ALLOWABLE FOR A WELL KNOWN AS:

Sweet Oil Well Equipment, Inc. Alice Sidall Well No. 1 in Unit D 1/4 1/4  
Company or Operator Lease

section 7, T. 20S, R. 39E, N.M.P.M. Skaggs Pool Lea County

Please indicate location: Elevation 3560GL Spudded 1-11-52 Completed 2-27-52

x			

Total Depth 3958' P.B. -  
Top Oil/Gas Pay 3810' Top Water Pay -  
Initial Production Test: Pump 10 BOPD flow (BOPD OR CU. FT. GAS PER DAY)  
Based on 10 Bbls. Oil in 24 Hrs. 0 Mins.  
Method of Test (Pitot, gauge, prover, meter run):  
Size of choke in inches  
Tubing (Size) 2" 3 feet  
Pressures: Tubing 10\* Casing 50\*  
Gas/Oil Ratio Gravity 36°  
Casing Perforations: None

Unit letter: D

Casing & Cementing Record

Size	Feet	Sax
8 5/8"	247	150
5 1/2"	3603	250

Acid Record: 2000 Gals 3920 to 3958 S/ Tr. Oil  
Gals to S/  
Gals to S/  
Shooting Record: 132 Qts 3905 to 3958 S/ 10 BOPD  
Qts to S/  
Qts to S/  
S/

Natural Production Test: 0 Pumping Flowing  
Test after acid or shot: 10BOPD Pumping Flowing

Please indicate below Formation Tops (in conformance with geographical section of state):

Southeastern New Mexico

T. Anhy 1255'  
T. Salt 1500'  
B. Salt 2700'  
T. Yates 2700'  
T. 7 Rivers  
T. Queen  
T. Grayburg 3750'  
T. San Andres  
T. Glorieta  
T. Drinkard  
T. Tubbs  
T. Abo  
T. Penn  
T. Miss

T. Devonian  
T. Silurian  
T. Montoya  
T. Simpson  
T. McKee  
T. Ellenburger  
T. Gr. Wash  
T. Granite  
T.  
T.  
T.  
T.  
T.

Northwestern New Mexico

T. Ojo Alamo  
T. Kirtland-Fruitland  
T. Farmington  
T. Pictured Cliffs  
T. Cliff House  
T. Menefee  
T. Point Lookout  
T. Mancos  
T. Dakota  
T. Morrison  
T. Penn  
T.  
T.

Date first oil run to tanks or gas to pipe line: \_\_\_\_\_

Pipe line taking oil or gas: Shell Pipe Line Company

Remarks: Well pumped to tanks after shooting zone 3805'-3858' with  
130 quarts Nitroglycerin.

Sweet Oil Well Equipment, Inc.  
Company or Operator

By: Ind. Warner  
Signature

Position: Drilling Superintendent

Send communications regarding well to:

Name: Sweet Oil Well Equipment, Inc.

Address: Box 1115, Hobbs, New Mexico

APPROVED 3 - 3, 1952

OIL CONSERVATION COMMISSION

By: Ray G. Gentry

Title: Oil & Gas