

| | | | |
|----------------------------|-----------|------------------|-----------|
| NUMBER OF COPIES DELIVERED | | DATE OF DELIVERY | |
| COPIES TO | COPIES TO | COPIES TO | COPIES TO |
| COPIES TO | COPIES TO | COPIES TO | COPIES TO |
| COPIES TO | COPIES TO | COPIES TO | COPIES TO |
| COPIES TO | COPIES TO | COPIES TO | COPIES TO |
| COPIES TO | COPIES TO | COPIES TO | COPIES TO |
| COPIES TO | COPIES TO | COPIES TO | COPIES TO |
| COPIES TO | COPIES TO | COPIES TO | COPIES TO |
| COPIES TO | COPIES TO | COPIES TO | COPIES TO |
| COPIES TO | COPIES TO | COPIES TO | COPIES TO |

NEW MEXICO OIL CONSERVATION COMMISSION
Santa Fe, New Mexico

Form C-101
Revised 12/1/55

NOTICE OF INTENTION TO DRILL

Notice must be given to the District Office of the Oil Conservation Commission and approval obtained before drilling or recompletion begins. If changes in the proposed plan are considered advisable, a copy of this notice showing such changes will be returned to the sender. Submit this notice in QUINTUPLICATE. One copy will be returned following approval. See additional instructions in Rules and Regulations of the Commission. If State Land submit 6 Copies. Attach Form C-128 in triplicate to first 3 copies of Form C-101.

Midland, Texas
(Place)

December 22, 1964
(Date)

OIL CONSERVATION COMMISSION
SANTA FE, NEW MEXICO

Gentlemen:

You are hereby notified that it is our intention to commence the Drilling of a well to be known as

TEXACO Inc.

(Company or Operator)

State of New Mexico "H" NCT-1, Well No. 28, in P The well is
(Lease) (Unit)
located 290 feet from the South line and 660 feet from the
East line of Section 31, T -20-S, R -37-E, NMPM.

(GIVE LOCATION FROM SECTION LINE) Oil Center-Blinebry Pool, Lea County

| | | | |
|---|---|---|---|
| D | C | B | A |
| E | F | G | H |
| L | K | J | I |
| M | N | O | P |

If State Land the Oil and Gas Lease is No. E-160-1

If patented land the owner is _____

Address _____

We propose to drill well with drilling equipment as follows: _____

The status of plugging bond is \$10,000 blanket surety bond of Maryland Casualty Co. filed with State Geologist.

Drilling Contractor Unknown at present.

We intend to complete this well in the Blinebry formation at an approximate depth of 6360 feet.

CASING PROGRAM

We propose to use the following strings of Casing and to cement them as indicated:

| Size of Hole | Size of Casing | Weight per Foot | New or Second Hand | Depth | Sacks Cement |
|--------------|----------------|-----------------|--------------------------|-------|--------------|
| | | | | | |
| | | SEE ATTACHED | SHEET FOR CASING PROGRAM | | |
| | | | | | |
| | | | | | |

If changes in the above plans become advisable we will notify you immediately.

ADDITIONAL INFORMATION (If recompletion give full details of proposed plan of work.)

Approved _____, 19____
Except as follows:

Sincerely yours,

TEXACO Inc.
(Company or Operator)

By J. J. Velten
Position Division Civil Engineer

Send Communications regarding well to

Name J. H. Markley

Address P. O. Box 3109, Midland, Texas

OIL CONSERVATION COMMISSION

By _____

CASING PROGRAM

We propose to use the following strings of Casing and to cement them as indicated:

| Size of Hole | Size of Casing | Weight per foot | New or Second Hand | Depth | Sacks Cement |
|--------------|----------------|-----------------|--------------------|-------|--------------|
| 11" | 7-5/8" | 24#, & 15.28# | New | 1100' | 650 * |
| 6-3/4" | 2-7/8" | 6.5# | New | 6360' | 700 ** |
| | | | | | |
| | | | | | |
| | | | | | |
| | | | | | |

* Cement with 450 sacks Incor 4% gel, followed by 200 sacks Incor neat.

** Install centralizers over pay & on first three joints above pay. Cement with 400 sacks Incor 8% gel containing friction reducer followed by 300 sacks Incor 4% gel. Precede cement with 30 barrels fresh water.

FORMATION TOPS EXPECTED

| | |
|--------------|-------|
| Anhydrite | 1080' |
| Top of salt | 1175' |
| Base of salt | 2480' |
| Yates | 2640' |
| Queen | 3320' |
| San Andres | 4070' |
| Glorieta | 5232' |
| Blaine | 5860' |
| Total Depth | 6360' |

NEW MEXICO OIL CONSERVATION COMMISSION
WELL LOCATION AND ACREAGE DEDICATION PLAT

FORM C-128
Revised 3/1/57

SEE INSTRUCTIONS FOR COMPLETING THIS FORM ON THE REVERSE SIDE

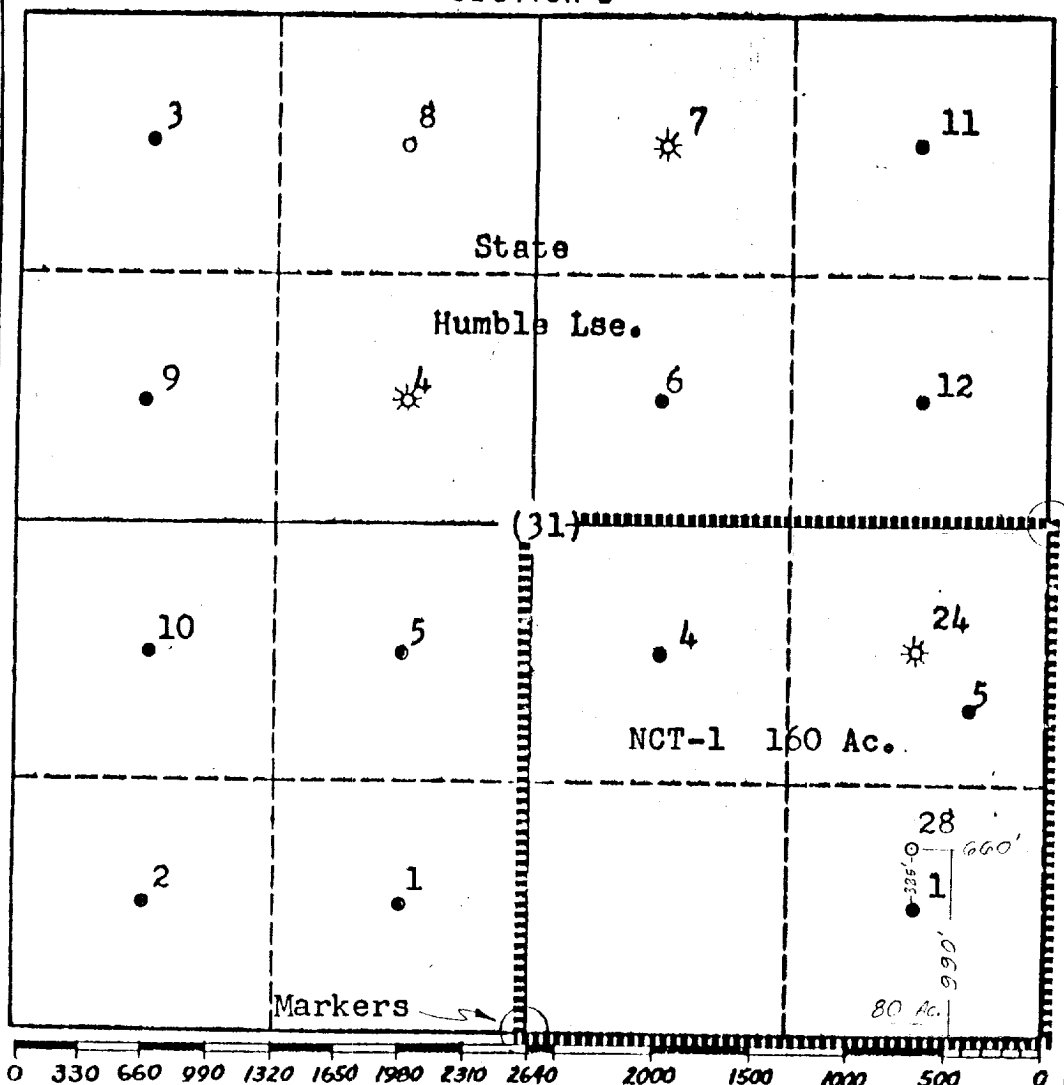
SECTION A

| | | | | |
|--|---------------------------------|--|--------------------------------|----------------|
| Operator TEXACO Inc. | | Lease State of New Mexico "H" NCT-1 | | Well No. 28 |
| Unit Letter P | Section 31 | Township 20 South | Range 37 East | County Lea |
| Actual Footage Location of Well: 990 feet from the South line and 660 feet from the East line Sec. 31 | | | | |
| Ground Level Elev. 3543 | Producing Formation Blinebry | Pool Oil Center-Blinebry | Dedicated Acreage: 80 Acres | |

1. Is the Operator the only owner in the dedicated acreage outlined on the plat below? YES ☒ NO ☐ . ("Owner" means the person who has the right to drill into and to produce from any pool and to appropriate the production either for himself or for himself and another. (63-3-29 (c) NMSA 1935 Comp.)
2. If the answer to question one is "no," have the interests of all the owners been consolidated by communitization agreement or otherwise? YES ☐ NO ☐ . If answer is "yes," Type of Consolidation _____
3. If the answer to question two is "no," list all the owners and their respective interests below:

| Owner | Land Description |
|-------|------------------|
| | |
| | |

SECTION B



CERTIFICATION

I hereby certify that the information in SECTION A above is true and complete to the best of my knowledge and belief.

Name
J. J. Velten
Position
Division Civil Engineer
Company
TEXACO Inc.
Date
12/22/64

I hereby certify that the well location shown on the plat in SECTION B was plotted from field notes of actual surveys made by me or under my supervision, and that the same is true and correct to the best of my knowledge and belief.

Date Surveyed
12/21/64
Registered Professional Engineer
and/or Land Surveyor
J. J. Velten
Certificate No.
8174