

NO. OF COPIES RECEIVED	
DISTRIBUTION	
SANTA FE	
FILE	
U.S.G.S.	
LAND OFFICE	
OPERATOR	

NEW MEXICO OIL CONSERVATION COMMISSION

30-01
Form C-101
Revised 1-1-65

5A. Indicate Type of Lease	
STATE <input type="checkbox"/>	FEE <input checked="" type="checkbox"/>
5. State Oil & Gas Lease No.	

APPLICATION FOR PERMIT TO DRILL, DEEPEN, OR PLUG BACK

1a. Type of Work		7. Unit Agreement Name	
b. Type of Well OIL WELL <input checked="" type="checkbox"/> GAS WELL <input type="checkbox"/> OTHER <input type="checkbox"/>		8. Farm or Lease Name Mattern	
2. Name of Operator Hanson Oil Corporation		9. Well No. 2	
3. Address of Operator P. O. Box 1515, Roswell, New Mexico 88201		10. Field and Pool, or Wildcat Blinebry	
4. Location of Well UNIT LETTER K LOCATED 1980 FEET FROM THE South LINE AND 1783 FEET FROM THE West LINE OF SEC. 30 TWP. 21-S RGE. 37-E NMPM		12. County Lea	
19. Proposed Depth 6000'		19A. Formation Blinebry-Oil	
20. Rotary or C.T. Rotary		21. Elevations (Show whether DF, RT, etc.) 3499' GL	
21A. Kind & Status Plug. Bond State wide		21B. Drilling Contractor Cactus Drilling Co.	
22. Approx. Date Work will start 6-20-70		23.	

PROPOSED CASING AND CEMENT PROGRAM

SIZE OF HOLE	SIZE OF CASING	WEIGHT PER FOOT	SETTING DEPTH	SACKS OF CEMENT	EST. TOP
17-1/2"	12-3/4"	33-1/2#	300'	250	Circ.
11"	8-5/8"	24#	2700'	250	1830'
7-7/8"	5-1/2"	15-1/2#	6000'	450	2961'

It is proposed that the captioned well be drilled with rotary to a depth of 6000 feet in the Blinebry Formation and that if commercial oil or gas is encountered that the proposed casing program be followed. If 5-1/2" casing is run and cemented, a temperature survey will be run in order to verify that the top of the cement is above the Penrose-Skelly "pay" at an approximate depth of 3150 feet. Upon running 5-1/2" casing, the well will be perforated and stimulated as may be indicated.

APPROVAL VALID
FOR 90 DAYS UNLESS
DRILLING COMMENCED,
EXPIRES 9-19-70

IN ABOVE SPACE DESCRIBE PROPOSED PROGRAM; IF PROPOSAL IS TO DEEPEN OR PLUG BACK, GIVE DATA ON PRESENT PRODUCTIVE ZONE AND PROPOSED NEW PRODUCTIVE ZONE. GIVE BLOWOUT PREVENTER PROGRAM, IF ANY.

I hereby certify that the information above is true and complete to the best of my knowledge and belief.

Signed Harry F. Schenck Title Exec. Vice President Date June 16, 1970

(This space for State Use)

APPROVED BY [Signature] TITLE SUPERVISOR DISTRICT DATE JUN 18 1970

CONDITIONS OF APPROVAL, IF ANY:

RECEIVED

JUN 18 1970

**OIL CONSERVATION COMM.
HOBBS, N. M.**

**NEW MEXICO OIL CONSERVATION COMMISSION
WELL LOCATION AND ACREAGE DEDICATION PLAT**

Form C-102
Supersedes C-128
Effective 1-1-65

All distances must be from the outer boundaries of the Section.

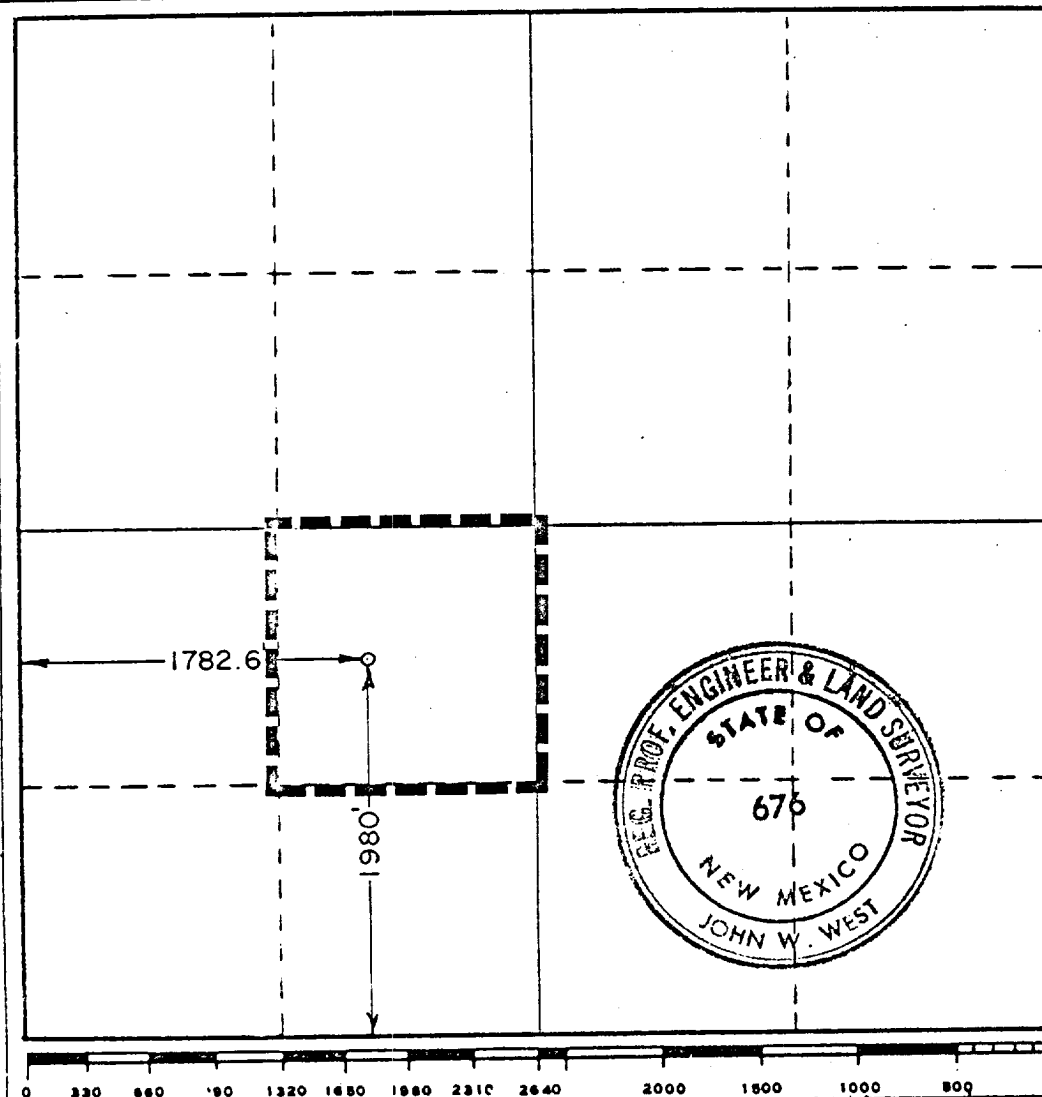
Operator HANSON OIL CORPORATION			Lease MATTERN		Well No. 2
Unit Letter K	Section 30	Township 21 SOUTH	Range 37 EAST	County LEA	
Actual Footage Location of Well: 1980 feet from the SOUTH line and 1782.6 feet from the WEST line					
Ground Level Elev. 3499'	Producing Formation Blinebry - Oil		Pool Blinebry - Oil	Dedicated Acreage: 40 Acres	

1. Outline the acreage dedicated to the subject well by colored pencil or hachure marks on the plat below.
2. If more than one lease is dedicated to the well, outline each and identify the ownership thereof (both as to working interest and royalty).
3. If more than one lease of different ownership is dedicated to the well, have the interests of all owners been consolidated by communitization, unitization, force-pooling, etc?

☐ Yes ☐ No If answer is "yes," type of consolidation _____

If answer is "no," list the owners and tract descriptions which have actually been consolidated. (Use reverse side of this form if necessary.) _____

No allowable will be assigned to the well until all interests have been consolidated (by communitization, unitization, forced-pooling, or otherwise) or until a non-standard unit, eliminating such interests, has been approved by the Commission.



CERTIFICATION

I hereby certify that the information contained herein is true and complete to the best of my knowledge and belief.

Name
Harry F. Schward
Position
Exec. Vice President
Company
Hanson Oil Corporation
Date
June 16, 1970

I hereby certify that the well location shown on this plat was plotted from field notes of actual surveys made by me or under my supervision, and that the same is true and correct to the best of my knowledge and belief.

Date Surveyed
JUNE 16, 1970
Registered Professional Engineer and/or Land Surveyor
John W. West
Certificate No. **676**

173

RECEIVED

JUN 18 1970

OIL CONSERVATION COMM.
HOBBES, N. M.

200-1
VI.