

UNITED STATES  
DEPARTMENT OF THE INTERIOR  
GEOLOGICAL SURVEY

## APPLICATION FOR PERMIT TO DRILL, DEEPEN, OR PLUG BACK

## 1a. TYPE OF WORK

DRILL ☒DEEPEN ☐PLUG BACK ☐

## b. TYPE OF WELL

OIL  
WELL ☒GAS  
WELL ☐

OTHER

SINGLE  
ZONE ☐MULTIPLE  
ZONE ☐

## 2. NAME OF OPERATOR

Hanson Oil Corporation

## 3. ADDRESS OF OPERATOR

P. O. Box 1515, Roswell, New Mexico 88201

## 4. LOCATION OF WELL (Report location clearly and in accordance with any State requirements.)\*

At surface

1650' FSL &amp; 990' FWL

At proposed prod. zone

Sec. 9, T-21-S, R-38-E, N.M.P.M.  
Lea County, New Mexico

## 14. DISTANCE IN MILES AND DIRECTION FROM NEAREST TOWN OR POST OFFICE\*

5-1/2 miles northeast of Eunice, New Mexico

## 15. DISTANCE FROM PROPOSED\*

LOCATION TO NEAREST  
PROPERTY OR LEASE LINE, FT.  
(Also to nearest drlg. unit line, if any)

330'

## 16. NO. OF ACRES IN LEASE

170.69

17. NO. OF ACRES ASSIGNED  
TO THIS WELL

40

18. DISTANCE FROM PROPOSED LOCATION\*  
TO NEAREST WELL, DRILLING, COMPLETED,  
OR APPLIED FOR, ON THIS LEASE, FT.

330'

## 19. PROPOSED DEPTH

10,000

## 20. ROTARY OR CABLE TOOLS

Rotary

## 21. ELEVATIONS (Show whether DF, RT, GR, etc.)

Unavailable at this time

## 22. APPROX. DATE WORK WILL START\*

April 17, 1972

## 23.

## PROPOSED CASING AND CEMENTING PROGRAM

SIZE OF HOLE	SIZE OF CASING	WEIGHT PER FOOT	SETTING DEPTH	QUANTITY OF CEMENT
17"	12-3/4"	34#	300'	300 sx. (circulated)
11"	8-5/8"	24# & 32#	4000'	400 sx.
7-7/8"	5-1/2"	17#	10000'	650 sx.

We propose drilling the referenced well with rotary tools to a total depth of approximately 10,000 feet or to a depth sufficient to test the Ellenburger Formation. The proposed casing program will be followed. If commercial production is indicated, 5-1/2" production casing will be set and cemented as proposed. The well will be stimulated as conditions indicate.

IN ABOVE SPACE DESCRIBE PROPOSED PROGRAM: If proposal is to deepen or plug back, give data on present productive zone and proposed new productive zone. If proposal is to drill or deepen directionally, give pertinent data on subsurface locations and measured and true vertical depths. Give blowout preventer program, if any.

## 24.

SIGNED

*Donald E. Thompson*

TITLE

Geologist

DATE

April 13, 1972

(This space for Federal or State office use)

PERMIT NO.

APPROVAL DATE

APPROVED BY

TITLE

DATE

CONDITIONS OF APPROVAL, IF ANY:

\*See Instructions On Reverse Side

RECEIVED

APR 11 1972

OIL CONSERVATION BOARD  
HOBBS, N. M.

**NEW MEXICO OIL CONSERVATION COMMISSION  
WELL LOCATION AND ACREAGE DEDICATION PLAT**

Form C-102  
Supersedes C-128  
Effective 1-1-65

All distances must be from the outer boundaries of the Section.

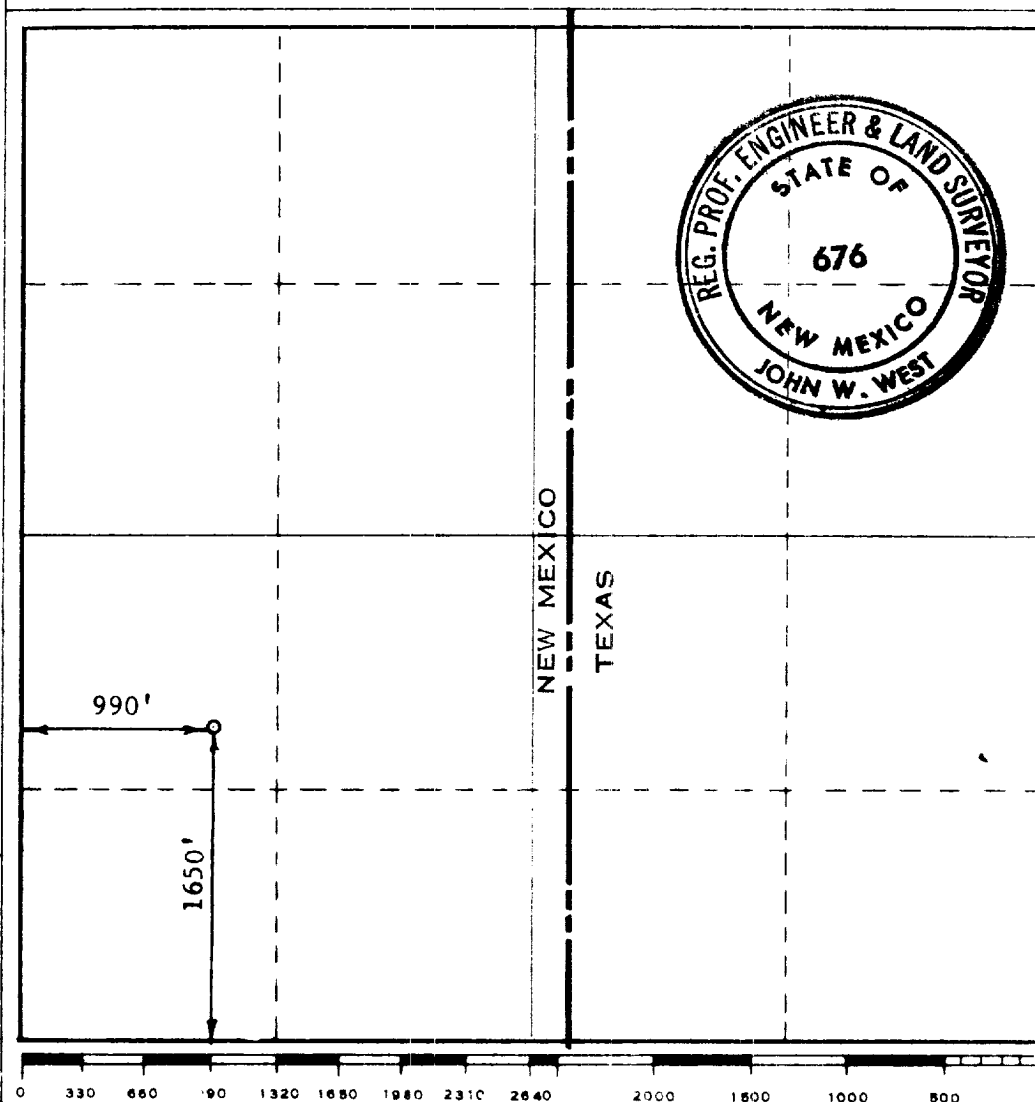
Operator <b>HANSON OIL CORP.</b>			Lease <b>ELLIOTT FEDERAL</b>		Well No. <b>1</b>
Unit Letter <b>L</b>	Section <b>9</b>	Township <b>21 SOUTH</b>	Range <b>38 EAST</b>	County <b>LEA</b>	
Actual Footage Location of Well: <b>1650</b> feet from the <b>SOUTH</b> line and <b>990</b> feet from the <b>WEST</b> line					
Ground Level Elev. <b>3568</b>	Producing Formation <b>ELLENBURGER</b>		Pool <b>WILDCAT</b>		Dedicated Acreage <b>40</b> Acres

1. Outline the acreage dedicated to the subject well by colored pencil or hachure marks on the plat below.
2. If more than one lease is dedicated to the well, outline each and identify the ownership thereof (both as to working interest and royalty).
3. If more than one lease of different ownership is dedicated to the well, have the interests of all owners been consolidated by communitization, unitization, force-pooling, etc?

☐ Yes    ☐ No    If answer is "yes," type of consolidation \_\_\_\_\_

If answer is "no," list the owners and tract descriptions which have actually been consolidated. (Use reverse side of this form if necessary.) \_\_\_\_\_

No allowable will be assigned to the well until all interests have been consolidated (by communitization, unitization, forced-pooling, or otherwise) or until a non-standard unit, eliminating such interests, has been approved by the Commission.



**CERTIFICATION**

I hereby certify that the information contained herein is true and complete to the best of my knowledge and belief.

Name John W. West  
Position AGENT

Company HANSON OIL CORP.

Date APRIL 13, 1972

I hereby certify that the well location shown on this plat was plotted from field notes of actual surveys made by me or under my supervision, and that the same is true and correct to the best of my knowledge and belief.

Date Surveyed APRIL 13, 1972

Registered Professional Engineer and/or Land Surveyor

John W. West  
Certificate No. **676**

RECEIVED

APR 1 1970

OIL CONSERVATION BOARD  
HOUSTON, TEXAS