

NO. OF COPIES RECEIVED	
DISTRIBUTION	
SANTA FE	
FILE	
U.S.G.S.	
LAND OFFICE	
OPERATOR	

NEW MEXICO OIL CONSERVATION COMMISSION

Form C-101
Revised 1-1-65

5A. Indicate Type of Lease
STATE ☐ FEE ☒

5. State Oil & Gas Lease No.

APPLICATION FOR PERMIT TO DRILL, DEEPEN, OR PLUG BACK

1a. Type of Work		7. Unit Agreement Name	
b. Type of Well OIL WELL <input checked="" type="checkbox"/> GAS WELL <input type="checkbox"/> OTHER <input type="checkbox"/>		8. Farm or Lease Name H. T. Mattern (NCT-B)	
2. Name of Operator Gulf Oil Corporation		9. Well No. 17	
3. Address of Operator Box 670, Hobbs, New Mexico 88240		10. Field and Pool, or Wildcat Undesignated	
4. Location of Well UNIT LETTER <u>C</u> LOCATED <u>380</u> FEET FROM THE <u>North</u> LINE AND <u>1650</u> FEET FROM THE <u>West</u> LINE OF SEC. <u>31</u> TWP. <u>21</u> =S RGE. <u>37</u> -E NMPM		12. County Lea	
21. Elevations (Show whether DF, RT, etc.)		19. Proposed Depth 6000'	19A. Formation Blinebry
21A. Kind & Status Plug. Bond Blanket	21B. Drilling Contractor	20. Rotary or C.T. Rotary	
		22. Approx. Date Work will start June 8, 1972	

23.

PROPOSED CASING AND CEMENT PROGRAM

SIZE OF HOLE	SIZE OF CASING	WEIGHT PER FOOT	SETTING DEPTH	SACKS OF CEMENT	EST. TOP
11"	8-5/8"	24#	1250'	Circulate	
7-7/8"	5-1/2"	15.5#	6000'	Base of Salt	

APPROVAL VALID
FOR 90 DAYS UNLESS
DRILLING COMMENCED,
EXPIRES 9-7-72

IN ABOVE SPACE DESCRIBE PROPOSED PROGRAM: IF PROPOSAL IS TO DEEPEN OR PLUG BACK, GIVE DATA ON PRESENT PRODUCTIVE ZONE AND PROPOSED NEW PRODUCTIVE ZONE, GIVE BLOWOUT PREVENTER PROGRAM, IF ANY.

I hereby certify that the information above is true and complete to the best of my knowledge and belief.

Signed CB Borland Title Area Production Manager Date June 5, 1972

(This space for State Use)

APPROVED BY [Signature] TITLE SUPERVISOR DISTRICT I DATE JUN 7 1972

CONDITIONS OF APPROVAL, IF ANY:

RECEIVED

JUN -- 6 1972

OIL CONSERVATION COMM.
HOBBS, N. M.

**NEW MEXICO OIL CONSERVATION COMMISSION
WELL LOCATION AND ACREAGE DEDICATION PLAT**

Form C-102
Supersedes C-128
Effective 1-1-65

All distances must be from the outer boundaries of the Section.

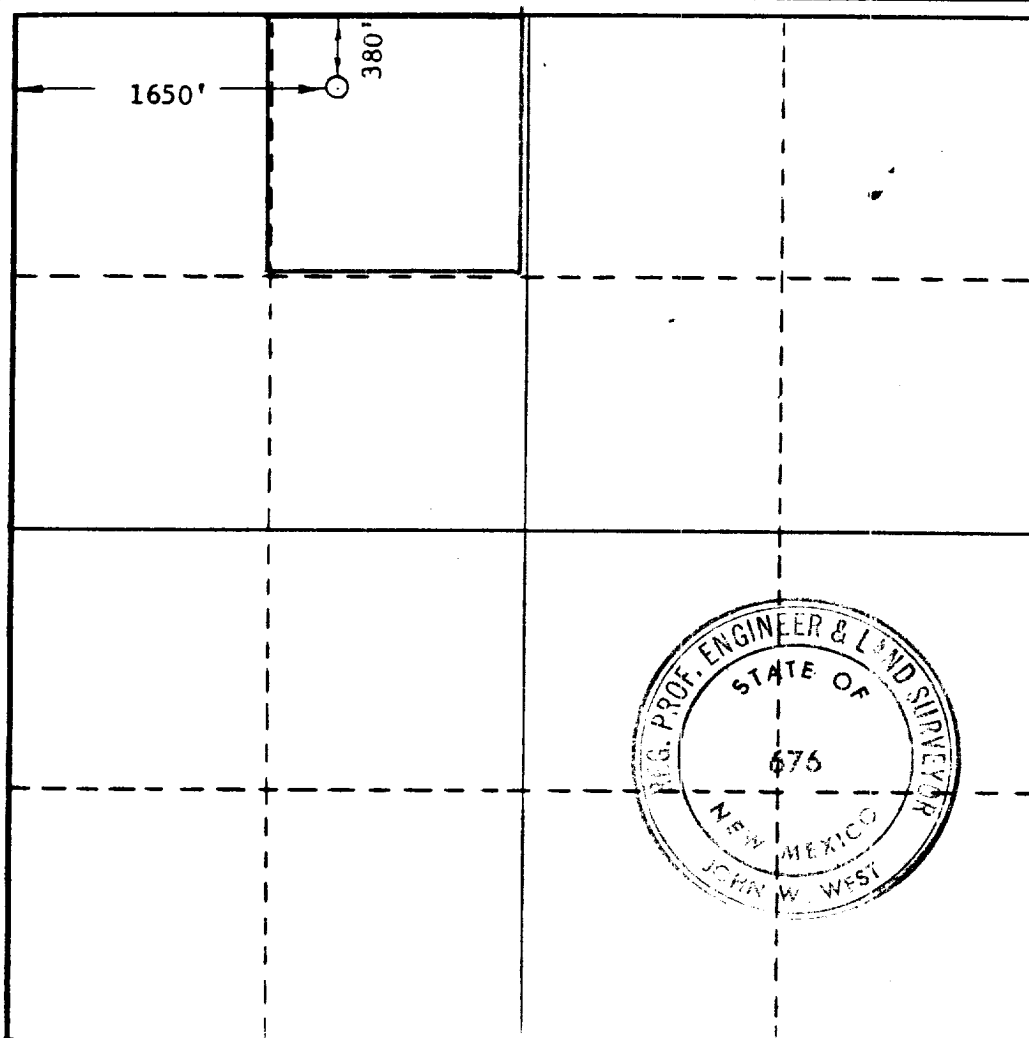
Operator GULF OIL CORP.			Lease H. T. MATTERN NCT-B		Well No. 17
Unit Letter C	Section 31	Township 21 SOUTH	Range 37 EAST	County LEA	
Actual Footage Location of Well: 380 feet from the NORTH line and 1650 feet from the WEST line					
Ground Level Elev.	Producing Formation WILCOX		Pool Indefinite	Dedicated Acreage: 4.4 Acres	

1. Outline the acreage dedicated to the subject well by colored pencil or hachure marks on the plat below.
2. If more than one lease is dedicated to the well, outline each and identify the ownership thereof (both as to working interest and royalty).
3. If more than one lease of different ownership is dedicated to the well, have the interests of all owners been consolidated by communitization, unitization, force-pooling, etc?

☐ Yes ☐ No If answer is "yes," type of consolidation _____

If answer is "no," list the owners and tract descriptions which have actually been consolidated. (Use reverse side of this form if necessary.) _____

No allowable will be assigned to the well until all interests have been consolidated (by communitization, unitization, forced-pooling, or otherwise) or until a non-standard unit, eliminating such interests, has been approved by the Commission.



CERTIFICATION

I hereby certify that the information contained herein is true and complete to the best of my knowledge and belief.

**ORIGINAL SIGNED BY
C. D. BORLAND**

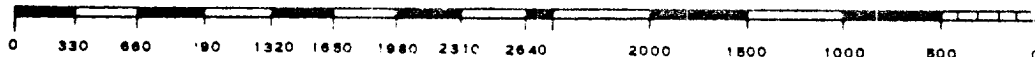
Name	C. D. BORLAND
Position	Assistant Commissioner
Company	Gulf Oil Corporation
Date	June 2, 1972

I hereby certify that the well location shown on this plat was plotted from field notes of actual surveys made by me or under my supervision, and that the same is true and correct to the best of my knowledge and belief.

Date Surveyed	JUNE 2, 1972
Registered Professional Engineer and/or Land Surveyor	John W. West

Certificate No.

676



473

RECEIVED

JUN - 6 1972

OIL CONSERVATION COMM.
HOBBS, N. M.