

UNITED STATES  
DEPARTMENT OF THE INTERIOR  
GEOLOGICAL SURVEY

APPLICATION FOR PERMIT TO DRILL, DEEPEN, OR PLUG BACK

1a. TYPE OF WORK

DRILL ☒

DEEPEN ☐

PLUG BACK ☐

b. TYPE OF WELL

OIL WELL ☒

GAS WELL ☐

OTHER ☐

SINGLE ZONE ☐

MULTIPLE ZONE ☐

2. NAME OF OPERATOR

Gulf Oil Corporation

3. ADDRESS OF OPERATOR

Box 670, Hobbs, New Mexico 88240

4. LOCATION OF WELL (Report location clearly and in accordance with any State requirements.)\*

At surface

660' FSL & 1930' FWL, Section 23, 20-S, 38-E

At proposed prod. zone

14. DISTANCE IN MILES AND DIRECTION FROM NEAREST TOWN OR POST OFFICE\*

5. LEASE DESIGNATION AND SERIAL NO.

NM-379542-A

6. IF INDIAN, ALLOTTEE OR TRIBE NAME

7. UNIT AGREEMENT NAME

8. FARM OR LEASE NAME

Turner Federal

9. WELL NO.

1

10. FIELD AND POOL, OR WILDCAT

Wildcat

11. SEC., T., R., M., OR BLK. AND SURVEY OR AREA

Sec 23, 20-S, 38-E

12. COUNTY OR PARISH

Lea

13. STATE

New Mexico

15. DISTANCE FROM PROPOSED\*

LOCATION TO NEAREST PROPERTY OR LEASE LINE, FT. (Also to nearest drlg. unit line, if any)

16. NO. OF ACRES IN LEASE

17. NO. OF ACRES ASSIGNED TO THIS WELL

18. DISTANCE FROM PROPOSED LOCATION\* TO NEAREST WELL, DRILLING, COMPLETED, OR APPLIED FOR, ON THIS LEASE, FT.

19. PROPOSED DEPTH

4500'

20. ROTARY OR CABLE TOOLS

Rotary

21. ELEVATIONS (Show whether DF, RT, GR, etc.)

22. APPROX. DATE WORK WILL START\*

May 31, 1972

23.

PROPOSED CASING AND CEMENTING PROGRAM

SIZE OF HOLE	SIZE OF CASING	WEIGHT PER FOOT	SETTING DEPTH	QUANTITY OF CEMENT
11"	8-5/8"	24# K-55	300'	Circulate (C1 C W/2% gel, C12)
7-7/8"	*5-1/2"	14# K-55	4500'	Base of Salt (C1 C W/16% gel, 2% salt & 2% CFR-2 as filler & Pay to be covered W/C1 C Neat.

\* If productive.

~~XX~~

Proposed Mud Program

0 - 300' Spud mud.  
300 - 1560' Fresh Water Native  
1560 - 4000' Brine Water  
4000 - TD Salt Water Gel.

Blow Out Preventers

See Attached Drawing

IN ABOVE SPACE DESCRIBE PROPOSED PROGRAM: If proposal is to deepen or plug back, give data on present productive zone and proposed new productive zone. If proposal is to drill or deepen directionally, give pertinent data on subsurface locations and measured and true vertical depths. Give blowout preventer program, if any.

24.

SIGNED

*Arthur R. Brown*

TITLE

Area Engineer

DATE

May 30, 1972

(This space for Federal or State office use)

✓

PERMIT NO.

APPROVAL DATE

APPROVED BY

TITLE

CONDITIONS OF APPROVAL, IF ANY:

**APPROVED**  
JUN 7 1972

ARTHUR R. BROWN  
DISTRICT ENGINEER

\*See Instructions On Reverse Side

RECEIVED

JUN 13 1972

OIL CONSERVATION COMM.  
HOBBS, N. M.

**NEW MEXICO OIL CONSERVATION COMMISSION  
WELL LOCATION AND ACREAGE DEDICATION PLAT**

Form C-102  
Supersedes C-128  
Effective 1-1-65

All distances must be from the outer boundaries of the Section.

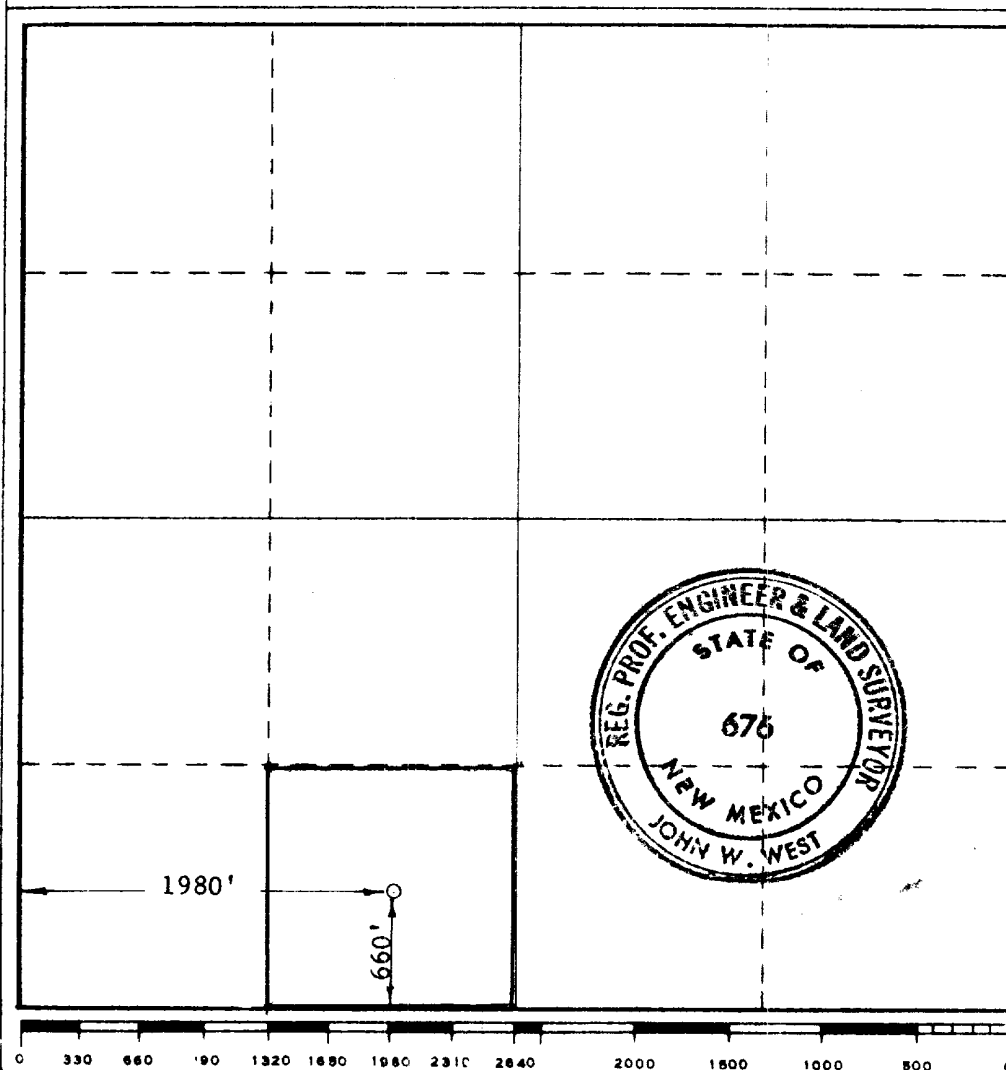
Operator <b>GULF OIL CORP.</b>			Lease <b>TURNER FEDERAL</b>		Well No. <b>1</b>
Unit Letter <b>N</b>	Section <b>23</b>	Township <b>20 SOUTH</b>	Range <b>38 EAST</b>	County <b>LEA</b>	
Actual Footage Location of Well: <b>660</b> feet from the <b>SOUTH</b> line and <b>1980</b> feet from the <b>WEST</b> line					
Ground Level Elev.	Producing Formation <b>San Andres</b>		Pool <b>Wildcat</b>	Dedicated Acreage: <b>40</b> Acres	

1. Outline the acreage dedicated to the subject well by colored pencil or hachure marks on the plat below.
2. If more than one lease is dedicated to the well, outline each and identify the ownership thereof (both as to working interest and royalty).
3. If more than one lease of different ownership is dedicated to the well, have the interests of all owners been consolidated by communitization, unitization, force-pooling, etc?

☐ Yes ☐ No If answer is "yes," type of consolidation \_\_\_\_\_

If answer is "no," list the owners and tract descriptions which have actually been consolidated. (Use reverse side of this form if necessary.) \_\_\_\_\_

No allowable will be assigned to the well until all interests have been consolidated (by communitization, unitization, forced-pooling, or otherwise) or until a non-standard unit, eliminating such interests, has been approved by the Commission.



**CERTIFICATION**

I hereby certify that the information contained herein is true and complete to the best of my knowledge and belief.

*C. F. Kalteyer*  
Name

**C. F. KALTEYER**

Position

**Area Engineer**

Company

**Gulf Oil Corporation**

Date

**May 31, 1972**

I hereby certify that the well location shown on this plat was plotted from field notes of actual surveys made by me or under my supervision, and that the same is true and correct to the best of my knowledge and belief.

Date Surveyed

**MAY 31, 1972**

Registered Professional Engineer and/or Land Surveyor

*John W. West*

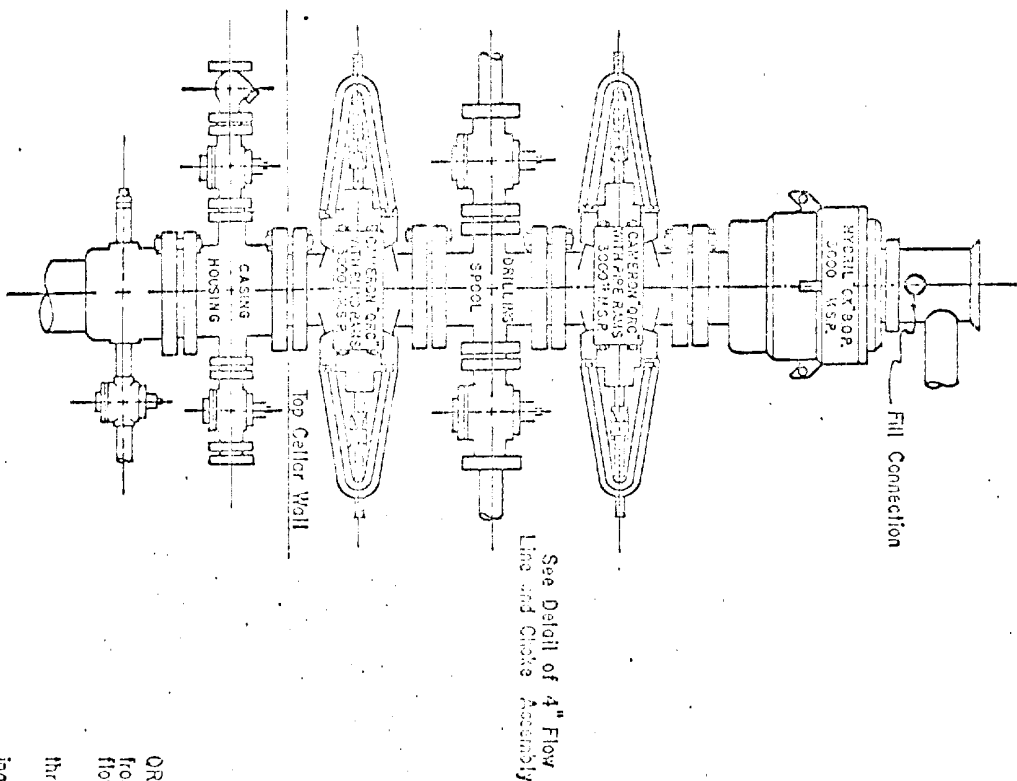
Certificate No.

**676**

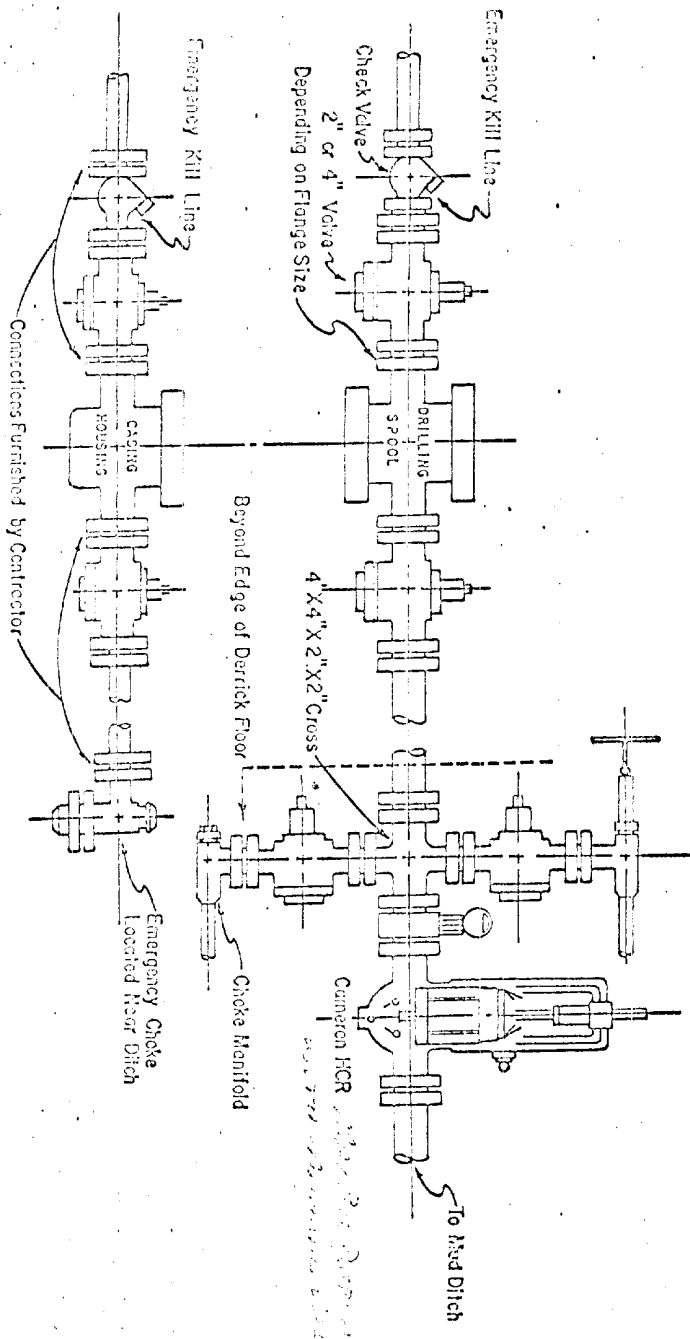
RECEIVED

JUN 13 1972

OIL CONSERVATION COMM.  
HOBBS, N. M.



3,000 PSI WORKING PRESSURE  
BLOWOUT PREVENTER HOOK-UP  
Series 900 Flanges, or Better



3,000 PSI WORKING PRESSURE  
KILL, CHOKES, AND FILL CONNECTIONS  
API Series 900 Flanges or Better

Minimum assembly for 3000 PSI working pressure will consist of three preventers. The bottom and middle preventers may be Cameron ORC, Cameron Type F single or Shafter hydraulic single, and the upper will be Hydril GK. In lieu of the drilling spool, the flanged outlets from the Cameron Type F single open face flanged preventer, provided the outlets are the correct size, may be used for the four-inch flow line and the two-inch kill line.

Size 12-inch preventers may be used for work down through 8-5/8-inch casing. Size 10-inch preventers may be used for work down through 7-5/8-inch casing. Size six-inch preventers are to be used for work through 7-inch and 5-1/2-inch casings.

Minimum operating equipment for the preventers will be: (1) An air operated pump and (2) An accumulator(s) with some means of obtaining a fluid charge. A closed fluid system is recommended. The closing manifold and remote closing manifold will have a separate four-way valve for each pressure operated device and a Hydril regulator will be provided. Sufficient fluid capacity in the accumulator(s) shall be available to close all the pressure operated devices of the same time with 25 percent reserve. Gulf Flo 561 hydraulic oil shall be used as the operating fluid.

The four-inch flow line from the preventers shall be supported by a metal stand or reinforced concrete. All valves throughout the assembly shall be selected for operation in both gas and fluids.

The ram type preventers and the Cameron HCR valve will be provided with stem extensions, universal joints, if needed, and operating wheels.

RECEIVED

JUN 13 1972

OIL CONSERVATION COMM.  
HOBBS, N. M.