

UNITED STATES  
DEPARTMENT OF THE INTERIOR  
GEOLOGICAL SURVEY

## APPLICATION FOR PERMIT TO DRILL, DEEPEN, OR PLUG BACK

1a. TYPE OF WORK

DRILL ☒DEEPEN ☐PLUG BACK ☐

b. TYPE OF WELL

OIL  
WELL ☒GAS  
WELL ☐

OTHER

SINGLE  
ZONE ☐MULTIPLE  
ZONE ☒

2. NAME OF OPERATOR

Continental oil Co.

3. ADDRESS OF OPERATOR

Box 460 Hobbs, N. Mex

4. LOCATION OF WELL (Report location clearly and in accordance with any State requirements.)\*

At surface

1980' FNL and 1830' FEL of Sec 1

At proposed prod. zone

Some

14. DISTANCE IN MILES AND DIRECTION FROM NEAREST TOWN OR POST OFFICE\*

15. DISTANCE FROM PROPOSED\*

LOCATION TO NEAREST

PROPERTY OR LEASE LINE, FT.

(Also to nearest drlg. unit line, if any)

18. DISTANCE FROM PROPOSED LOCATION\*

TO NEAREST WELL, DRILLING, COMPLETED,  
OR APPLIED FOR, ON THIS LEASE, FT.

21. ELEVATIONS (Show whether DF, RT, GR, etc.)

16. NO. OF ACRES IN LEASE

17. NO. OF ACRES ASSIGNED  
TO THIS WELL

19. PROPOSED DEPTH

20. ROTARY OR CABLE TOOLS

22. APPROX. DATE WORK WILL START\*

23.

## PROPOSED CASING AND CEMENTING PROGRAM

SIZE OF HOLE	SIZE OF CASING	WEIGHT PER FOOT	SETTING DEPTH	QUANTITY OF CEMENT
13 3/4"	9 5/8" H-40	32#	1200'	Circ - 700 sacks
8 3/4"	7" J-55	20, 23 & 26#	6860'	500 sacks

It is proposed to drill a straight hole to a TD of 6860' and complete as a Blinbury / Drinkard producer. Sufficient flowout preventer will be installed prior to work. Mud program (0-1200' - 8.5-9.5; spud mud) and 1200'-6860' (9.0-9.5 Salt gel).

Existing roads will be used in connection with the drilling of this well.

IN ABOVE SPACE DESCRIBE PROPOSED PROGRAM: If proposal is to deepen or plug back, give data on present productive zone and proposed new productive zone. If proposal is to drill or deepen directionally, give pertinent data on subsurface locations and measured and true vertical depths. Give blowout preventer program, if any.

24.

SIGNED

Walter Gault III

TITLE

Admin. Supervisor

DATE

10-17-72

(This space for Federal or State office use)

PERMIT NO.

APPROVAL DATE

APPROVED BY

TITLE

DATE

CONDITIONS OF APPROVAL, IF ANY:

APPROVED  
AS AMENDED  
OCT 20 1972ANTHONY R. BROWN  
DISTRICT ENGINEER

\*See Instructions On Reverse Side

USGS(\$)/VMFu(4) File

RECEIVED

U. S. 21 1872

OIL CONSERVATION CO. INC.  
HOBBS, N. M.

NEW MEXICO OIL CONSERVATION COMMISSION  
WELL LOCATION AND ACREAGE DEDICATION PLAT

Form C-102  
Supersedes C-128  
Effective 1-1-65

All distances must be from the outer boundaries of the Section

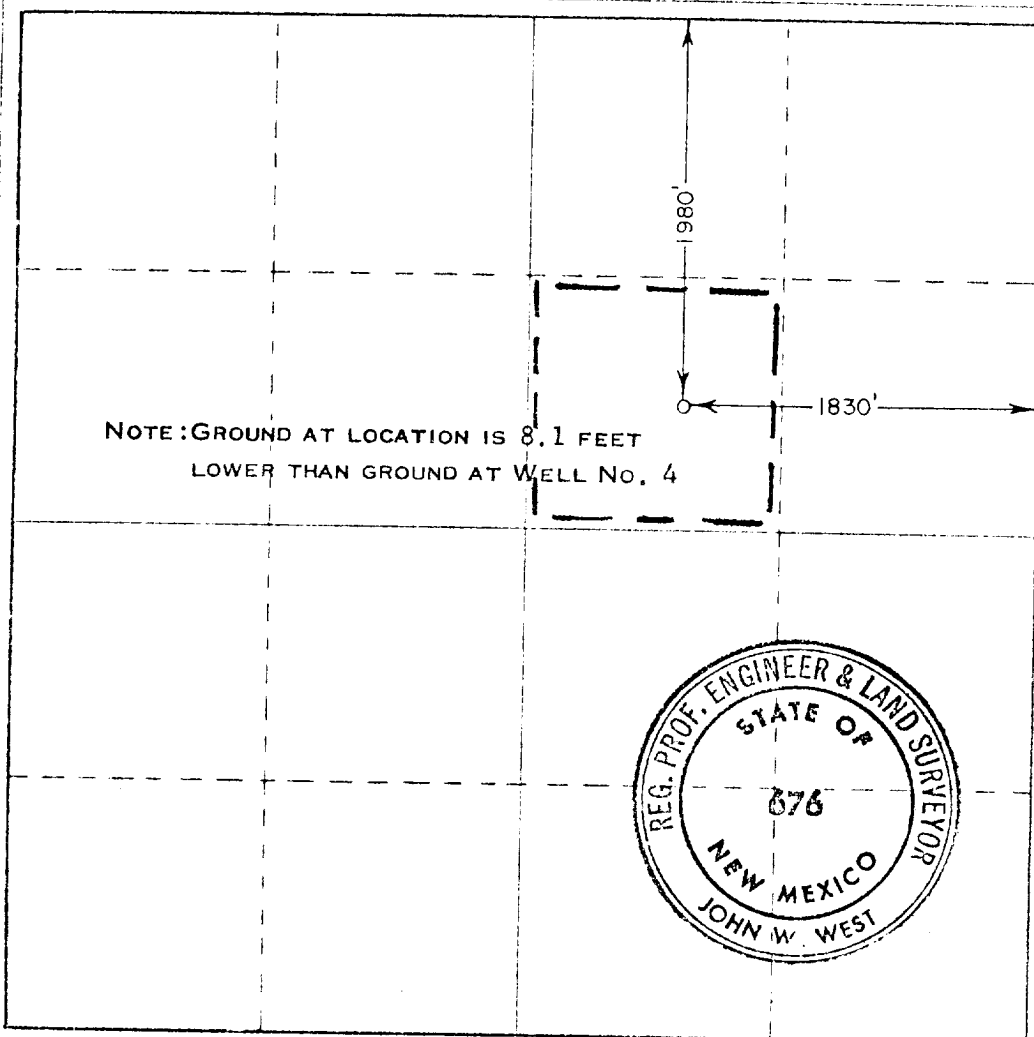
Operator <b>CONTINENTAL OIL CO.</b>			Lease <b>LOCKHART B 1</b>		Well No. <b>7</b>
Unit Letter <b>G</b>	Section <b>1</b>	Township <b>22 SOUTH</b>	Range <b>36 EAST</b>	County <b>LEA</b>	
Actual Footage Location of Well: <b>1980</b> feet from the <b>NORTH</b> line and <b>1830</b> feet from the <b>EAST</b> line					
Ground Level Elev. <b>Blindbury-Drinkard</b>	Producing Formation <b>Blindbury-Drinkard</b>		Pool <b>Blindbury-Drinkard</b>	Dedicated Acreage <b>Blindbury-Drinkard</b>	

1. Outline the acreage dedicated to the subject well by colored pencil or hatchure marks on the plat below.
2. If more than one lease is dedicated to the well, outline each and identify the ownership thereof (both as to working interest and royalty).
3. If more than one lease of different ownership is dedicated to the well, have the interests of all owners been consolidated by communitization, unitization, force-pooling, etc?

☐ Yes ☐ No If answer is "yes," type of consolidation \_\_\_\_\_

If answer is "no," list the owners and tract descriptions which have actually been consolidated. (Use reverse side of this form if necessary.) \_\_\_\_\_

No allowable will be assigned to the well until all interests have been consolidated (by communitization, unitization, forced-pooling, or otherwise) or until a non-standard unit, eliminating such interests, has been approved by the Commission.



CERTIFICATION

I hereby certify that the information contained herein is true and complete to the best of my knowledge and belief.

*Robert Gault III*  
Admin. Supervisor  
Continental Oil Co.  
October 17, 1972

I hereby certify that the well location shown on this plat was plotted from field notes of actual surveys made by me or under my supervision and that the same is true and correct to the best of my knowledge and belief.

Date Surveyed

**OCTOBER 4, 1972**

Registered Professional Engineer and Land Surveyor

*John W. West*

676

## ENVIRONMENT CONSIDERATION STATEMENT

### Application to Drill on Federal Leases

The attached plat shows the existing roads and, by red coloring, the proposed roads to service the proposed well. The plat also shows the location of tank battery and flowlines. There are no camps or airstrips contemplated to serve this lease.

Litter, such as paper, scrap iron, etc., will be picked up and hauled away. Salt water and other undesirable liquids will be picked up for disposal in approved disposal wells. Mud, drill cuttings, and other inert material will be disposed of by burying in the reserve pit when it is abandoned and the surface restored to level condition.

The second plat shows the proposed layout of the drilling rig in relation to the pad and shows the location of mud tanks, reserve pits, pipe racks, etc.

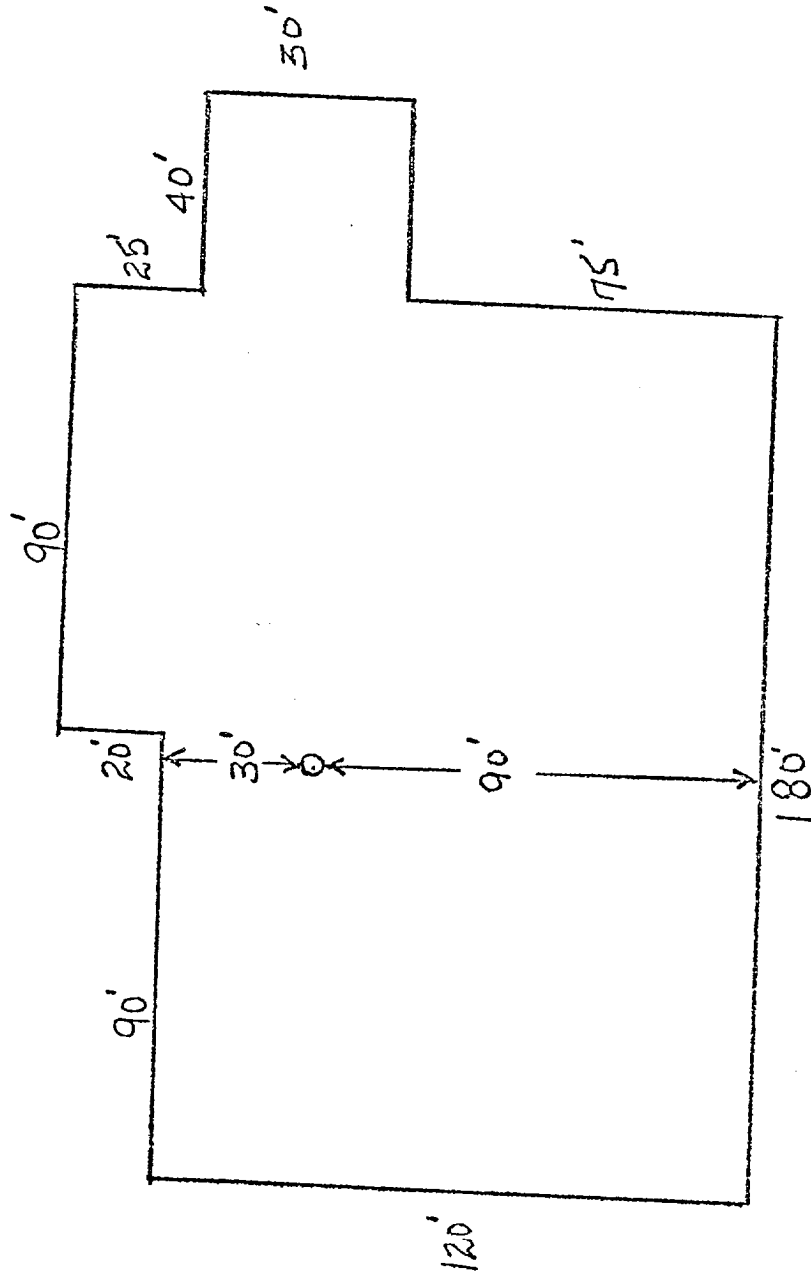
(X)

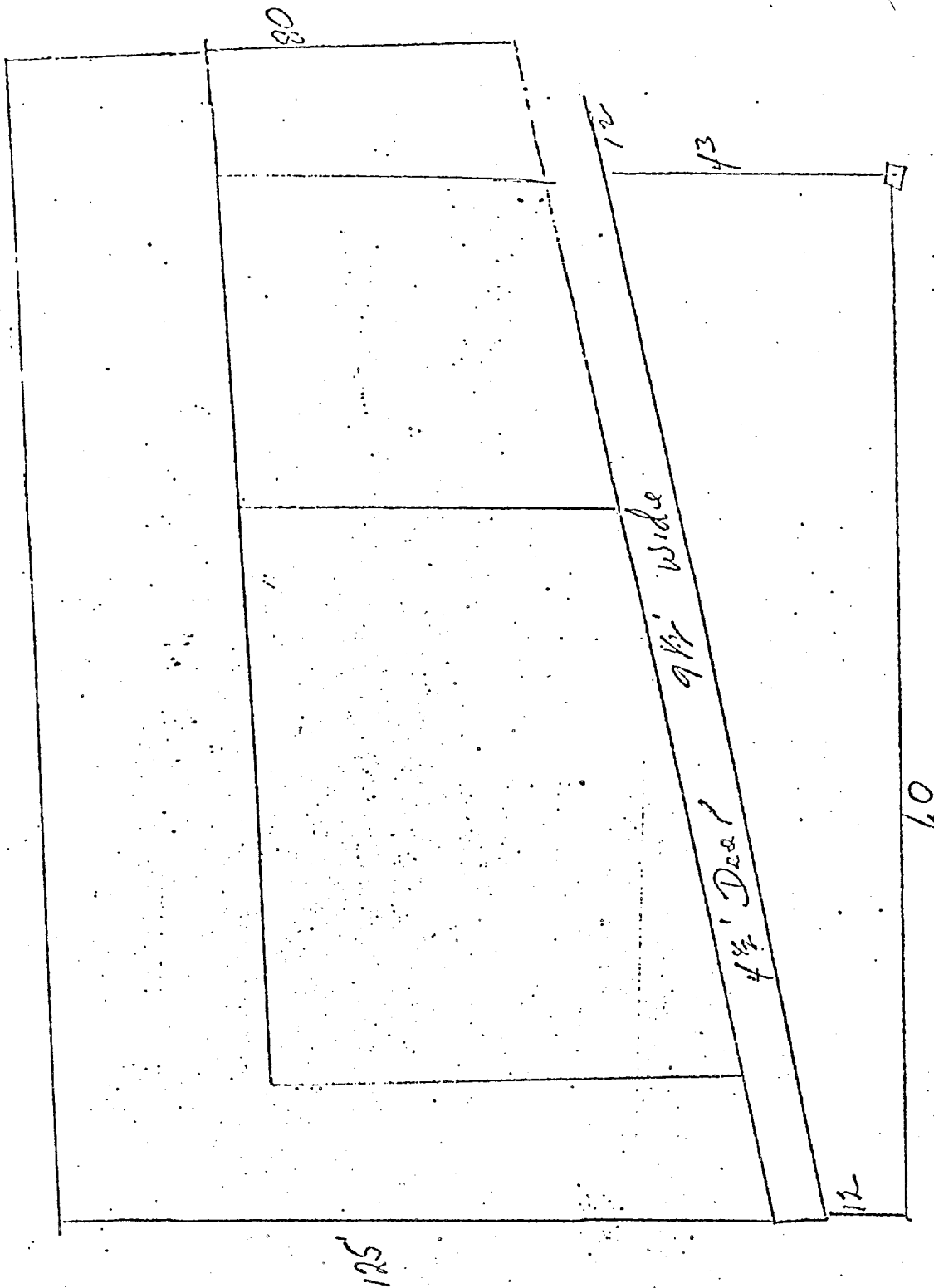
Water will be hauled to the location.

( )

A flowline will be laid from the battery to the well and will be used to furnish water during drilling operations and then will be used to handle the wells' production following completion.

PAD  
MORAN OIL PRODUCING & DRILLING CORP.  
Rig No. 5 on the  
Continental Oil Company - Lockhart B-1 No. 7





PIT AREA

MORAN OIL PRODUCING & DRILLING CORP.

Rig No. 5 on the

Continental Oil Company - Lockhart B-1 No. 7