

This form is not to
be used for reporting
packer leakage tests
in Northwest New Mexico

SOUTHEAST NEW MEXICO PACKER LEAKAGE TEST

Operator Adobe Oil Company			Lease Linda Federal			Well No. 1
LOCATION OF WELL	Unit K	Sec 23	Twp 20 South	Rgn 38 East	County Lea	
	NAME OF RESERVOIR OR POOL		TYPE OF PROD. (Oil or Gas)	METHOD OF PROD. FLOW, ART LIFT	PROD. MEDIUM (Tbg or Csg)	CHOKE SIZE
Upper Compl.	Blinebry		Oil	Flow	Tbg.	24/64
Lower Compl.	Warren Tubb		Oil	Flow	Tbg.	29/64

FLOW TEST NO. 1

Both zones shut-in at (hour, date): 9-15-83 @ 8:00 A.M.

Well opened at (hour, date): 9-16-83 @ 4:00 P.M.

	Upper Completion	Lower Completion
Indicate by (X) the zone producing		X
Pressure at beginning of test	900	890
Stabilized? (Yes or No)	Yes	Yes
Maximum pressure during test	910	890
Minimum pressure during test	900	0
Pressure at conclusion of test	910	0
Pressure change during test (Maximum minus Minimum)	10	890
Was pressure change an increase or a decrease?	Increase	Decrease
Well closed at (hour, date): 4:00 P.M. 9-17-83	Total Time On Production 24 Hours	
Oil Production During Test: 17 bbls; Grav. 38.0	Gas Production During Test 28 MCF; GOR 1647	

Remarks:

(Continue on reverse side)

FLOW TEST NO. 2

Well opened at (hour, date):	7:00 P.M. 9-18-83	Upper Completion	Lower Completion
Indicate by (X) the zone producing		X	
Pressure at beginning of test		910	760
Stabilized? (Yes or No)		Yes	Yes
Maximum pressure during test		910	900
Minimum pressure during test		50	760
Pressure at conclusion of test		100	900
Pressure change during test (Maximum minus Minimum)		860	140
Was pressure change an increase or a decrease?		Decrease	Increase
Well closed at (hour, date):	5:00 P.M. 9-19-83	Total Time On Production	22 Hours
Oil Production During Test:	7 bbls; Grav. 40.0	Gas Production During Test	21 MCF; GOR 3000

Remarks:

I hereby certify that the information herein contained is true and complete to the best of my knowledge.

 Approved _____ 19_____
 New Mexico Oil Conservation Division

Operator: Adobe Oil Company

By _____

By _____

Title Engineer

Title _____

Date September 20, 1983

 ORIGINAL SIGNED BY JERRY SEXTON
 DISTRICT I SUPERVISOR

SOUTHEAST NEW MEXICO PACKER LEAKAGE TEST INSTRUCTIONS

1. A packer leakage test shall be commenced on each multiply completed well within seven days after actual completion of the well, and annually thereafter as presented by the order authorizing the multiple completion. Such tests shall also be commenced on all multiple completions within seven days following recompletion and/or chemical or fracture treatment, and whenever remedial work has been done on a well during which the packer or the tubing have been disturbed. Tests shall also be taken at any time that communication is suspected or when requested by the Division.

2. At least 72 hours prior to the commencement of any packer leakage test, the operator shall notify the Division in writing of the exact time the test is to be commenced. Other operators shall also be so notified.

3. The packer leakage test shall commence when both zones of the dual completion are shut-in for pressure stabilization. Both zones shall remain shut-in until the well head pressure in each has stabilized and for a minimum of two hours thereafter, provided however, that they need not remain shut-in more than 24 hours.

4. For Flow Test No. 1, one zone of the dual completion shall be produced at the normal rate of production while the other zone remains shut-in. Such test shall be continued until the flowing wellhead pressure has become stabilized and for a minimum of two hours thereafter, provided however, that the flow test need not continue for more than 24 hours.

5. Following completion of Flow Test No. 1, the well shall again be shut-in, in accordance with Paragraph 3 above.

6. Flow Test No. 2 shall be conducted even though no leak was indicated during Flow Test No. 1. Procedure for Flow Test No. 2 is to be the same as for Flow Test No. 1 except that the previously produced zone shall remain shut-in while the previously shut-in zone is produced.

7. All pressures, throughout the entire test, shall be continuously measured and recorded with recording pressure gauges, the accuracy of which must be checked with deadweight tester at least twice, once at the beginning and once at the end, of each flow test.

8. The results of the above described tests shall be filed in triplicate within 15 days after completion of the test. Tests shall be filed with the appropriate District Office of the New Mexico Oil Conservation Division on Southeast New Mexico Packer Leakage Test Form Revised 11-01-58, together with the original pressure recording gauge charts with all the deadweight pressures which were taken indicated thereon. In lieu of filing the aforesaid charts, the operator may construct a pressure versus time curve for each zone of each test, indicating thereon all pressure changes which may be reflected by the gauge charts as well as all deadweight pressure readings which were taken. If the pressure curve is submitted, the original chart must be permanently filed in the District Office. Form C-116 shall also accompany the Packer Leakage Test Form when the test period includes a gas-oil ratio test period.

 O.C.D.
 NOBBS OFFICE

6 AM

Adobe Oil Company
Linda Federal No. 1
Packer Leakage Test

2800
2600
2400
2200
2000
1800
1600
1400
1200
1000
800
600
400
200



GRAPHIC CONTROLS CORPORATION
BUFFALO, NEW YORK
LBS PER SQ INCH

Flow Warren Tubb

Chart No. 1

Sept. 16-17 1983

BR 4744

Blind

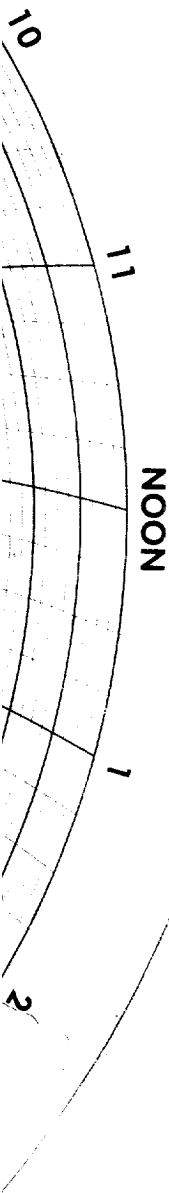
Warren Tubb

99% 100% 110% 120% 130% 140% 150% 160% 170% 180% 190% 200% 210% 220% 230% 240% 250% 260% 270% 280%

Both Jones Shut-in

West Engineering Co
Witness: [Signature]

6 PM



RECEIVED
SEP 20 1983
O.C.D.
HOBBS OFFICE

Adobe Oil Company
Linda Federal No. 1
Packer Leakage Test

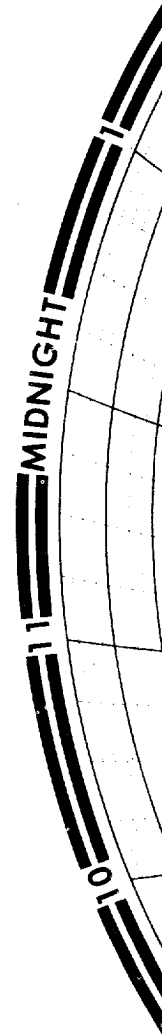
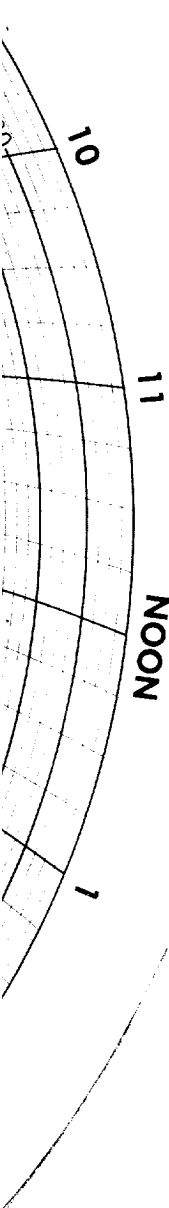
GRAPHIC CONTROLS CORPORATION
BUFFALO, NEW YORK
LBS. PER SQ. INCH

Warren Tubb Build-up

Chart No. 2
Sept. 17-18 1983
BR 4744

Warren Tubb
Blind

West Engineering Co.
Witness: M. E. Johnson



RECEIVED
SEP 20 1983
C.C.D.
HOBBS OFFICE

6 AM

Adobe Oil Company
Linda Federal No. 1
Packer Leakage Test

Warren Tubbs

Blindbry



GRAPHIC CONTROLS CORPORATION
BUFFALO, NEW YORK

LBS PER SQ. INCH

Flow Blindbry

Chart No. 3

Sept. 18-19, 1983

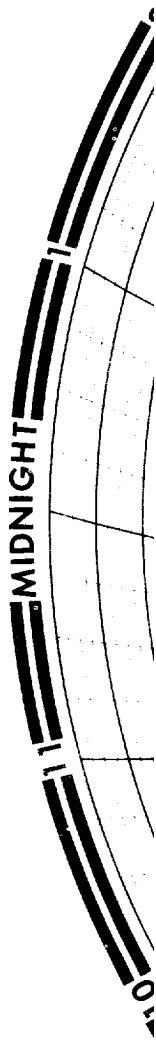
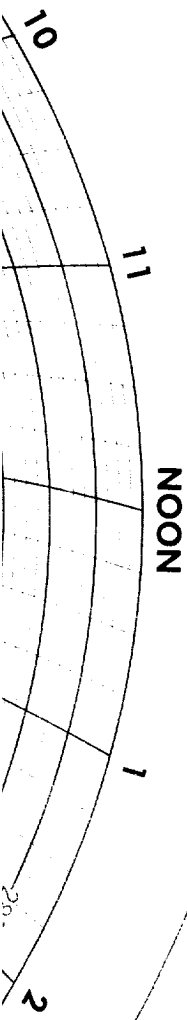
BR 4744

END of Test

Open Blindbry

Wast Engineering Co.
Witness: Mark E. Johnson

6 PM



RECEIVED
SEP 20 1983
O.C.D.
HOBBS OFFICE