

NEW MEXICO OIL CONSERVATION COMMISSION  
WELL LOCATION AND ACREAGE DEDICATION FORM

Form O-100  
Supersedes O-100  
Effective 1-1-68

All distances must be from the outer boundaries of the Section

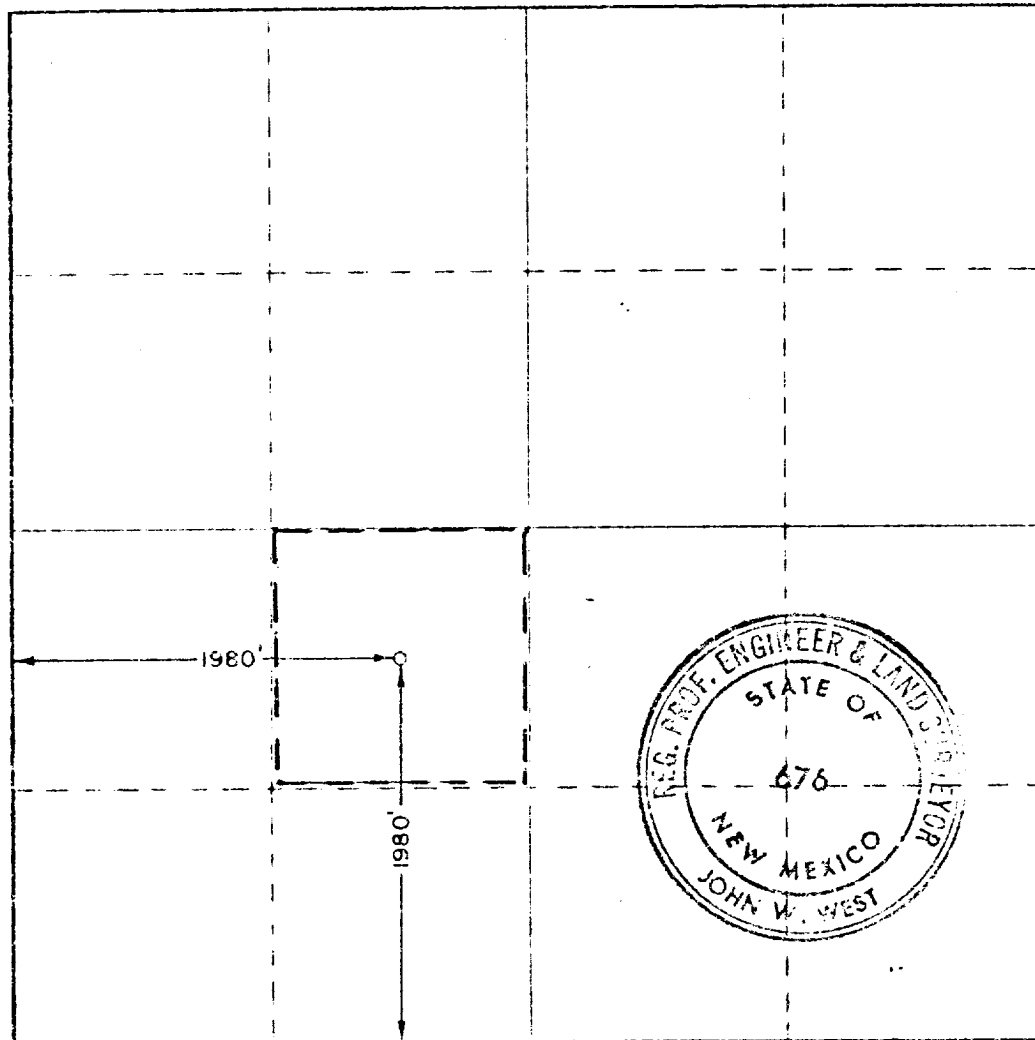
CONTINENTAL OIL COMPANY			WARREN UNIT		30
K	27	20 SOUTH	38 EAST	LEA	
Location of Well:					
1980	feet from the	SOUTH	Line and	1980	feet from the
3543.4	Producing Formation		Foot	Dedicated Acreage	
	Blindley - Brinkard			40	

- Outline the acreage dedicated to the subject well by colored pencil or hatchure marks on the plat below.
- If more than one lease is dedicated to the well, outline each and identify the ownership thereof (both as to working interest and royalty).
- If more than one lease of different ownership is dedicated to the well, have the interests of all owners been consolidated by communitization, unitization, force-pooling, etc?

☐ Yes ☐ No If answer is "yes," type of consolidation \_\_\_\_\_

If answer is "no," list the owners and tract descriptions which have actually been consolidated. (Use reverse side of this form if necessary.) \_\_\_\_\_

No allowable will be assigned to the well until all interests have been consolidated (by communitization, unitization, forced-pooling, or otherwise) or until a non-standard unit, eliminating such interests, has been approved by the Commission.



CERTIFICATION

I hereby certify that the information contained herein is true and complete to the best of my knowledge and belief.

*Robert Gault*

Division Office Manager

*Continental Oil Co.*

*April 11, 1974*

I hereby certify that the well location shown on this plat was plotted from field notes of actual surveys made by me or under my supervision and that the same is true and correct to the best of my knowledge and belief.

Date Surveyed

APRIL 9, 1974

Registered Professional Engineer and Land Surveyor

*John W. West*

676

0 330 660 990 1320 1650 1980 2310 2640 2970 3300 3630 3960 4290 4620 4950 5280 5610 5940 6270 6600

117

RECEIVED  
JAN 10 1962  
U.S. DEPARTMENT OF COMMERCE  
WASHINGTON, D.C.