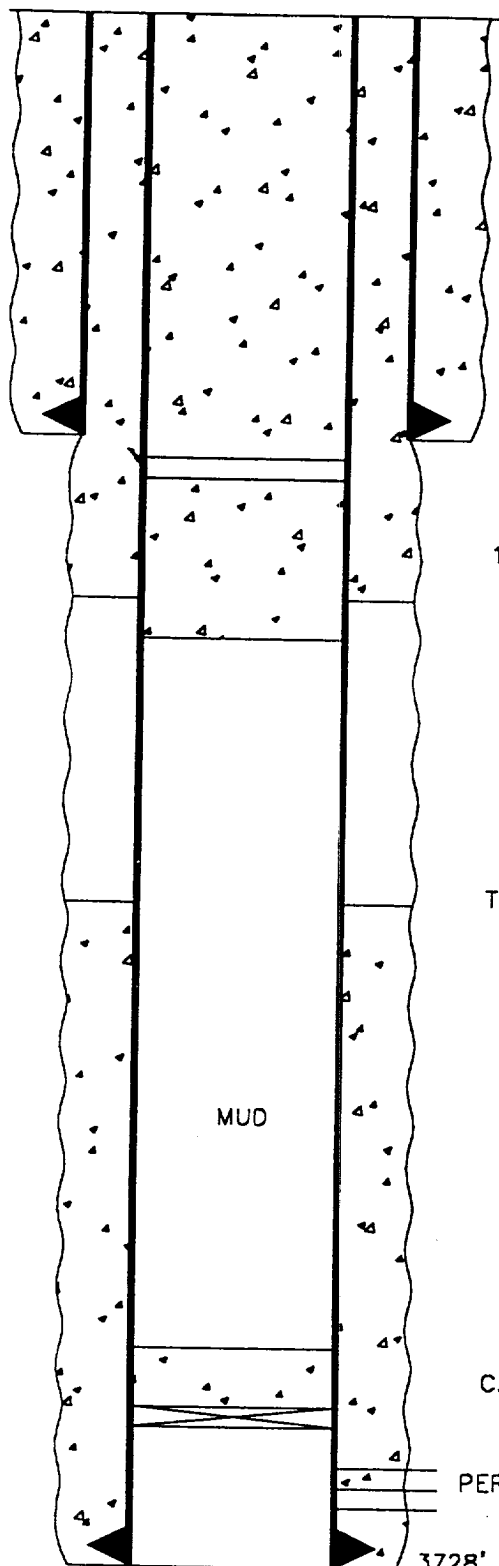


PROPOSED PLUG AND ABANDONMENT

8/11/99

Elev. = 3529' GL +10' KB



SPOT 45 SXS CEMENT 460' TO SURFACE

1/95 - HOLES IN 5 1/2" CSG. 482'-957'. CIRC. AND SQZ'D
410 SXS CEMENT THRU HOLES TO SURFACE

411' - 8 5/8" Casing. Cemented w/210 sxs. Circulated.

1/95 - CIRCULATED MUD AND SPOTTED 50 SXS CEMENT 600'-1100'

T.O.C. @ 2100' (Temp. Sur.)

C.I.B.P. @ 3485' W/100' CEMENT ON TOP

PERFS 3530'-3659'

3728' - 5 1/2" CASING. CEMENTED W/275 SXS.

CONOCO, INC.

S.E.M.U. #94

1830' FNL & 660' FWL

Sec. 23, T-20S, R-37E

Lea County, NM