

NEW MEXICO OIL CONSERVATION COMMISSION
WELL LOCATION AND ACREAGE DEDICATION PLAT

Form C-102
Supersedes C-123
Effective 1-1-65

All distances must be from the outer boundaries of the Section.

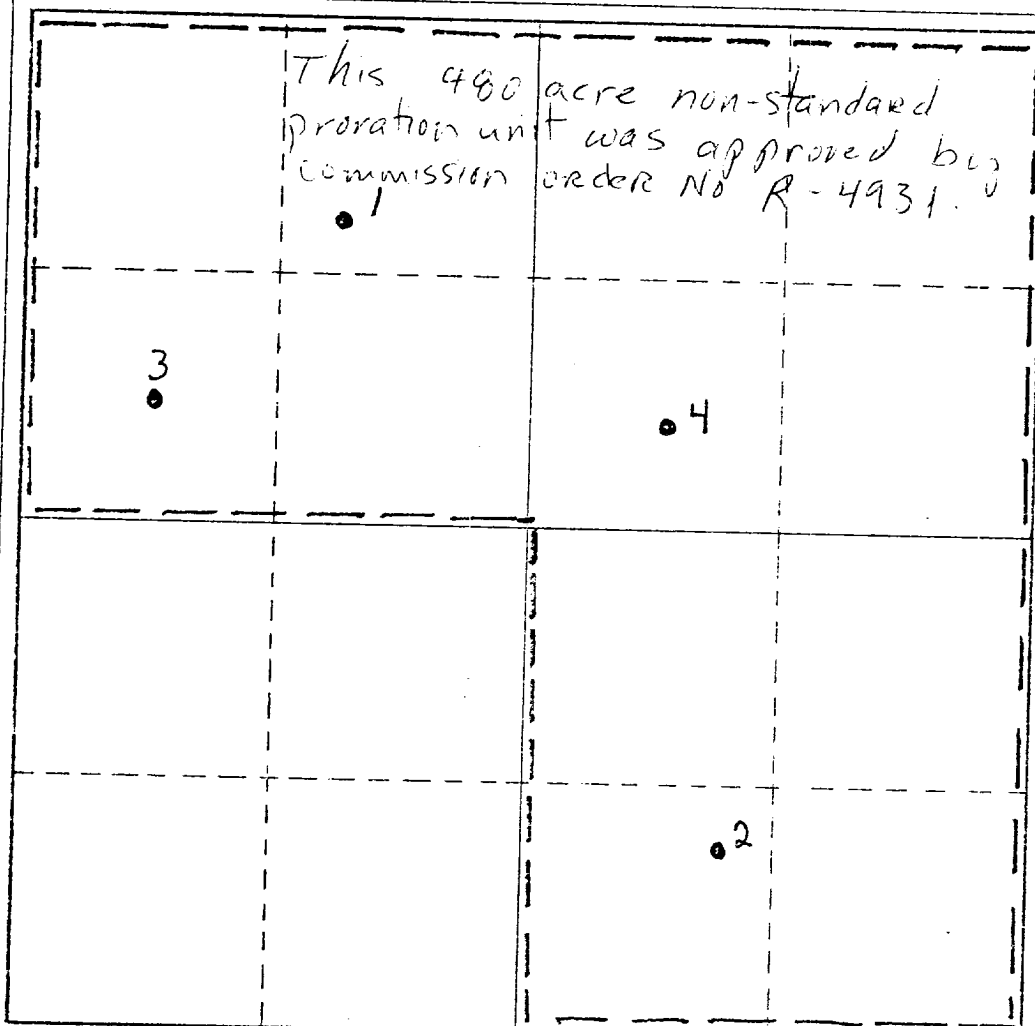
Operator Continental Oil			Lease Meyer B-23		Well No. 4
Unit Letter G	Section 23	Township 22-S	Range 36-E	County Lea	
Actual Footage Location of Well:					
1980 feet from the North		line and 1980 feet from the East		line	
Ground Level Elev. 3487	Producing Formation YATES	Pool JALMAT	Dedicated Acreage: 480 (joint) Acres		

1. Outline the acreage dedicated to the subject well by colored pencil or hatchure marks on the plat below.
2. If more than one lease is dedicated to the well, outline each and identify the ownership thereof (both as to working interest and royalty).
3. If more than one lease of different ownership is dedicated to the well, have the interests of all owners been consolidated by communitization, unitization, force-pooling, etc?

☐ Yes ☐ No If answer is "yes," type of consolidation _____

If answer is "no," list the owners and tract descriptions which have actually been consolidated. (Use reverse side of this form if necessary.) _____

No allowable will be assigned to the well until all interests have been consolidated (by communitization, unitization, forced-pooling, or otherwise) or until a non-standard unit, eliminating such interests, has been approved by the Commission.



CERTIFICATION

I hereby certify that the information contained herein is true and complete to the best of my knowledge and belief.

Name
Ralph J. Jolley
Position
Adm. Supervisor
Company
Continental Oil
Date
January 8, 1975

I hereby certify that the well location shown on this plat was plotted from field notes of actual surveys made by me or under my supervision, and that the same is true and correct to the best of my knowledge and belief.

Date Surveyed _____

Registered Professional Engineer and/or Land Surveyor _____

Certificate No. _____

0 330 660 990 1320 1650 1980 2310 2640 2970 3300 3630 3960 4290 4620 4950 5280 5610 5940 6270 6600 6930 7260 7590 7920 8250 8580 8910 9240 9570 9900

© Copyrighted Reproduction Prohibited

COUNTY	LEA	FIELD	Jalmat	STATE	NM
OPR	CONTINENTAL OIL CO.			API	30-025-24859
NO	4	LEASE	Meyer "B-23"	SERIAL	
	Sec 23, T-22-S, R-36-E			MAP	
	1980' FNL, 1980' FEL of Sec			CO-ORD	
	5 mi SW/Eunice			ELEV	[REDACTED] LBS
SPD	9-26-74	CMP	12-18-74	WELL CLASS:	INT. D
CSE				FIN	DC
	8 5/8" at 500' w/270 sx 5 1/2" at 3075' w/300 sx			FORMATION	DATUM
				TD	3640' (SVRV)
				PBD	3405'

IP (Yates-Seven Rivers) OH 3075-3405' CAO 866 MCFGPD. GOR
 Dry; Grav (Gas) NR; SIWHP 219#

CONTR	Cactus	OPR'S ELEV	3487' GL	PD	3550' RT
-------	--------	------------	----------	----	----------

	F.R. 9-23-74
	(Yates)
10-1-74	Drlg 3025' anhy & lm
10-8-74	TD 3075'; Prep Drill
10-15-74	Drlg 3590'
10-22-74	TD 3640'; SI
10-29-74	TD 3640'; SI
11-5-74	TD 3640'; Flwg to Clean
11-11-74	TD 3640'; Flwg to Clean
11-18-74	TD 3640'; SI
12-3-74	TD 3640'; SI
12-10-74	TD 3640'; CO OH
	Frac (3196-3640') 20,000 gals wtr + 34,000# sd
12-17-74	TD 3640'; PBD 3405'; WO Gas Conn
	PB to 3405'

LEA

CONTINENTAL OIL CO.

Jalmat

4 Meyer "B-23"

Sec 23, T22S, R36E

NM

Page #2

1-20-75

2-17-75

TD 3640'; FBD 3405'; WO OCC Pot

CAOF 866 MCEGPD (3075-3640')

TD 3640'; FBD 3405'; COMPLETE

(Yates-Seven Rivers) FOUR POINT GAUGES:

Flwd 339 MCEGPD, 3/4" orifice, 60 mins,
TP 180#

Flwd 396 MCEGPD, 3/4" orifice, 60 mins,
TP 138#

Flwd 431 MCEGPD, 3/4" orifice, 60 mins,
TP 99#

Flwd 476 MCEGPD, 3/4" orifice, 45 mins,
TP 80#

LOG TOPS: Yates 3108', Seven Rivers
3288'

COMPLETION REPORTED

2-22-75