

NEW MEXICO OIL CONSERVATION COMMISSION  
WELL LOCATION AND ACREAGE DEDICATION PLAT

Form 1  
Superintendent of  
Lands and Minerals

All distances must be from the outer boundaries of the Section

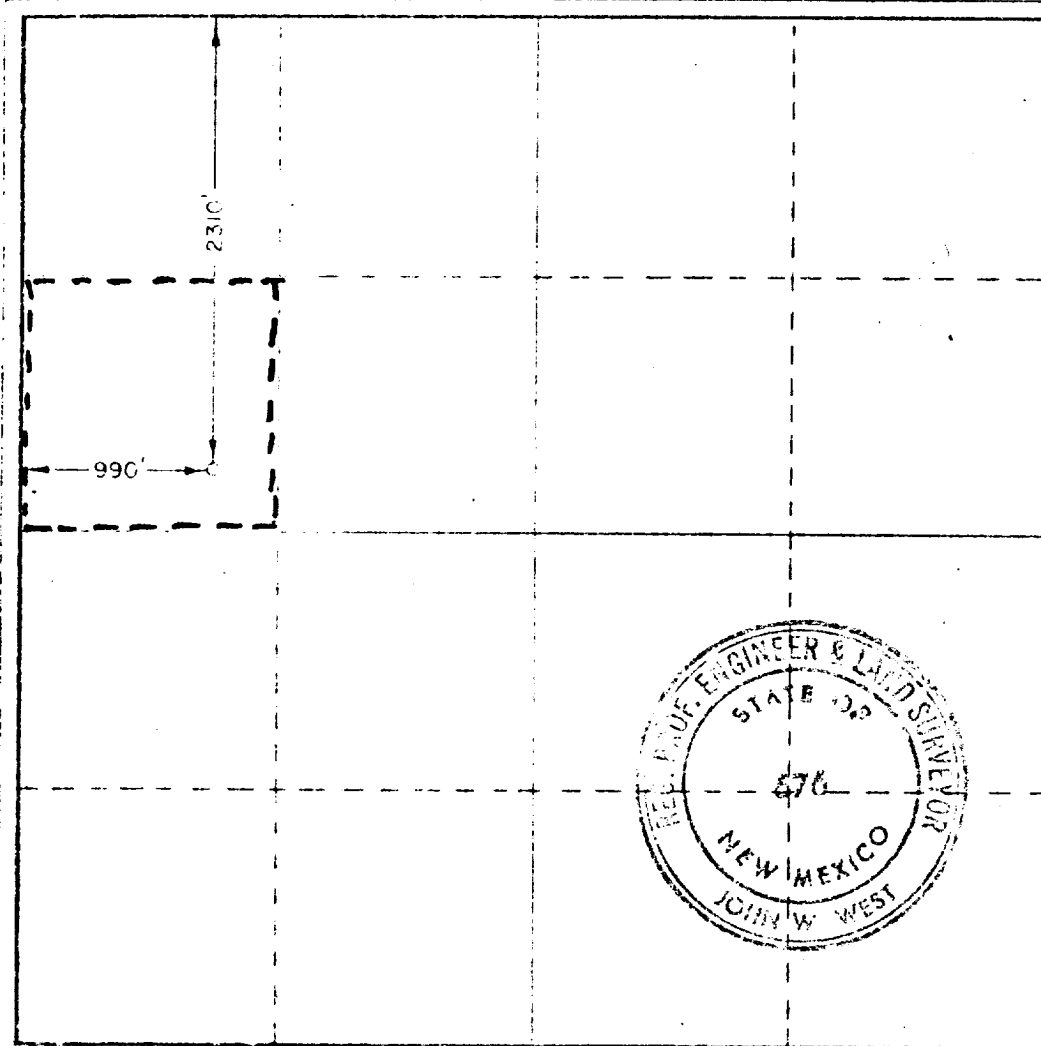
CONTINENTAL OIL COMPANY			Lease STATE C-16		Well No. 3
Section E	16	Township 20 SOUTH	Range 37 EAST	County LEA	
Actual Well Location of Well:					
2310	feet from the NORTH line and	990	feet from the WEST line		
Ground Level Elev. 3517.8	Producing Formation Paddock	Pool Monument Paddock	Dedicated Acreage 40		

1. Outline the acreage dedicated to the subject well by colored pencil or hatchure marks on the plat below.
2. If more than one lease is dedicated to the well, outline each and identify the ownership thereof (both as to working interest and royalty).
3. If more than one lease of different ownership is dedicated to the well, have the interests of all owners been consolidated by communitization, unitization, force-pooling, etc?

☐ Yes ☐ No If answer is "yes," type of consolidation \_\_\_\_\_

If answer is "no," list the owners and tract descriptions which have actually been consolidated. (Use reverse side of this form if necessary) \_\_\_\_\_

No allowable will be assigned to the well until all interests have been consolidated (by communitization, unitization, forced-pooling, or otherwise) or until a non-standard unit, eliminating such interests, has been approved by the Commission.



CERTIFICATION

I hereby certify that the information contained herein is true and complete to the best of my knowledge and belief.

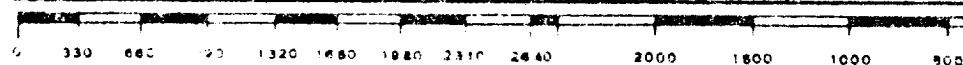
Name *John West*  
SR. ANALYST  
CONTINENTAL Oil Co.  
Date 10-1-74

I hereby certify that the well location shown on this plat was plotted from field notes of actual surveys made by me or under my supervision, and that the same is true and correct to the best of my knowledge and belief.

Date Surveyed JULY 30, 1974

Registered Professional Engineer and Land Surveyor

*John W. West*  
676



173

U.S. DEPARTMENT OF THE INTERIOR  
BUREAU OF LAND MANAGEMENT